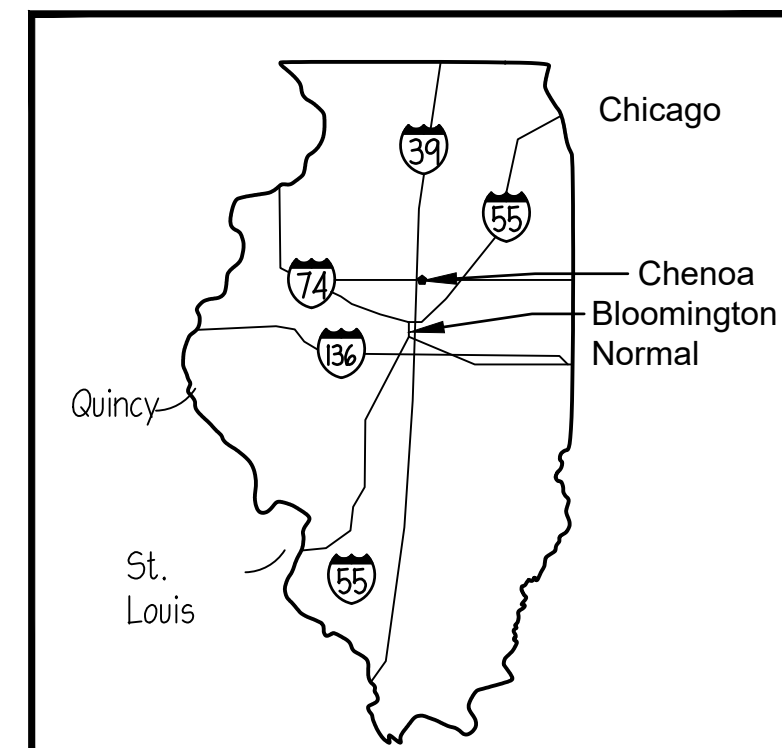


# PRAIRIE CENTRAL PRIMARY WEST 2020 PARTIAL REROOF

FOR Prairie Central C.U.S.D. No. 8  
700 S. Division Street - Chenoa, IL 61736  
District Office Location : 605 N 7th Street - Fairbury, IL 61739



Illinois Counties Scale: Not to Scale



Illinois Highways Scale: Not to Scale



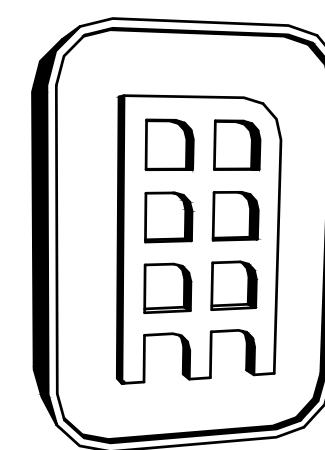
CITY LOCATION MAP

STATE LOCATION MAPS

## MIDDLETON ASSOCIATES INCORPORATED ARCHITECTURAL SERVICES

1702 W. COLLEGE AVE.-STE 'E'  
PHONE (309) 452-1271  
http://www.middletonassociates.net

NORMAL, IL 61761-2793  
FAX (309) 454-8049  
middleton@middletonassociates.net



MARK	IDENTIFICATION
	SPOT ELEVATION, (EL.), (ELEV.)
	ENLARGED DETAIL DETAIL NUMBER ■ TITLE SHEET LOCATION
	ENLARGED ELEVATION DIRECTION ▲ ELEVATION LETTER A-2.0 SHEET LOCATION
	ENLARGED SECTION DIRECTION ▲ SECTION NUMBER A-2.0 SHEET LOCATION

SCHEDULE OF ABBREVIATIONS	
A.F.F.	ABOVE FINISHED FLOOR
APPROX.	APPROXIMATELY
¢	CENTERLINE DATUM
BLK'G	BLOCKING
CONT.	CONTINUOUS
DEMO	SELECTIVE DEMOLITION & REPAIR
D.S.	DOWNSPOUT LOCATION
(E), EXIST	EXISTING
EQUIP.	EQUIPMENT, AS APPLIES
EXP. JT.	EXPANSION JOINT, AS APPLIES
GA., ga.	GAGE, GAUGE, AS APPLIES
G.C.	GENERAL PRIME CONTRACTOR WORK
J.	ROOF JACK - PIPING OR CONDUIT
MAX.	MAXIMUM ALLOWED SPACING
M.C.	MECHANICAL SUB-CONTRACTOR
MIN.	MINIMUM SPACING ALLOWED
N.T.S.	NOT TO SCALE
O.C.	ON CENTER
SIM.	SIMILAR
SPECS.	REFER TO SPECIFICATION BOOKLET (SPEC.)
ST. ST.	STAINLESS STEEL, (S.S.)
TYP.	TYPICAL
U.N.O.	UNLESS NOTED OTHERWISE
● O-1	LOCATION OF A.C.M. TEST, SEE SPEC. 02083
R.C.	PRIME CONTRACTOR - SINGLE CONTRACT
G.C.	GENERAL SUB-CONTRACTOR
E.C.	ELECTRICAL SUB-CONTRACTOR
M.C.	MECHANICAL SUB-CONTRACTOR

MARK	COMPOSITION
	CONCRETE BLOCK
	BRICK
	CAST-IN-PLACE CONCRETE
	INSULATION (AS APPLIES)
	DIMENSIONAL LUMBER AS NOTED
	PLYWOOD AS NOTED
	NEW STUD / GYPSUM WALL BOARD WALL

SHEET INDEX	
T-1.0	TITLE SHEET - JOB INFORMATION
G-1.0	PHOTO GALLERY
R-1.0	PRIMARY WEST - ROOF PLAN
R-2.0	PRIMARY WEST - DETAILS
R-3.0	PRIMARY WEST - DETAILS
R-4.0	PRIMARY WEST - DETAILS

I HEREBY CERTIFY THAT THE PLANS AND SPECIFICATIONS DATED MARCH 24, 2020, PRAIRIE CENTRAL PRIMARY WEST PARTIAL REROOF, FOR PRAIRIE CENTRAL CUSD NO. 8, 700 SOUTH DIVISION STREET, CHENOA, IL 61726 & SUPERINTENDENTS' OFFICE, 605 N 7TH STREET, FAIRBURY, IL 61739 WERE PREPARED WITH MY SUPERVISION USING INTERNATIONAL BUILDING CODE 2012 & ILLINOIS ADMINISTRATIVE CODE 180 INTERNATIONAL ENERGY CONSERVATION CODE 2015 AND TO THE BEST OF MY KNOWLEDGE, COMPLY WITH THE HEALTH/LIFE SAFETY CODE AS PREPARED AND PROVIDED BY THE STATE OF ILLINOIS BOARD OF EDUCATION. I HAVE PREPARED, OR CAUSED TO BE PREPARED UNDER MY DIRECT SUPERVISION, THE ATTACHED PLANS AND SPECIFICATIONS AND STATE THAT TO THE BEST OF MY KNOWLEDGE AND BELIEF AND TO THE EXTENT OF MY CONTRACTUAL OBLIGATION, THEY COMPLY WITH THE ENVIRONMENTAL BARRIERS ACT (ILL. REV. STAT. 1985, CH. III-1/2, PARS. 3711 ET. SEQ. AS AMENDED) AND THE ILLINOIS ACCESSIBILITY CODE, 71 ILLINOIS ADMINISTRATIVE CODE 400.

*Russell W. Middleton*  
RUSSELL W. MIDDLETON 001-007820 EXPIRES: 30 NOVEMBER, 2020  
MIDDLETON ASSOCIATES INCORPORATED

PROJECT NOTE: ALL NEW MATERIALS EMPLOYED IN THE WORK SHALL BE ASBESTOS FREE AND PCB FREE. CONTRACTOR SHALL SUBMIT CERTIFICATION OF SUSPECT ITEMS UPON REQUEST, AND FOR THE OVERALL PROJECT AT THE CONCLUSION OF THE WORK.

1702 W. College Ave.  
Suite E  
Normal, IL 61761-2793  
P: 309.452.1271  
F: 309.454.8049  
middletonassociates.net

PRAIRIE CENTRAL PRIMARY WEST PARTIAL REROOF  
700 S. Division Street - Chenoa, IL 61726  
for Prairie Central CUSD No. 8  
605 N. 7th Street  
Fairbury, IL 61739

TITLE SHEET

NO.	DATE	REMARKS

PROJECT NO.  
24990319  
ISSUE DATE  
MARCH 24, 2020  
SHEET  
T-1.0  
OF 6 SHEETS

PRAIRIE CENTRAL PRIMARY WEST  
2020 PARTIAL REROOF  
PHOTO GALLERY



1702 W. College Ave.  
Suite E  
Normal, IL 61761-2793  
p: 309.452.1271  
f: 309.454.8049  
middletonassociates.net

**MIDDLETON ASSOCIATES, INC ARCHITECTS**

THE CONTRACTOR SHALL VERIFY CONDITIONS & DIMENSIONS ON THE JOB. INFORMATION SHOWN ON ANY PART OF THE DRAWINGS SHALL APPLY TO SIMILAR CONDITIONS AT OTHER LOCATIONS IN THE WORK UNLESS SET FORTH OTHERWISE.

PRAIRIE CENTRAL PRIMARY WEST PARTIAL REROOF  
700 S. Division Street - Chenoa, IL 61726  
for Prairie Central CUSD No. 8  
605 N. 7th Street  
Fairbury, IL 61739

PHOTO GALLERY

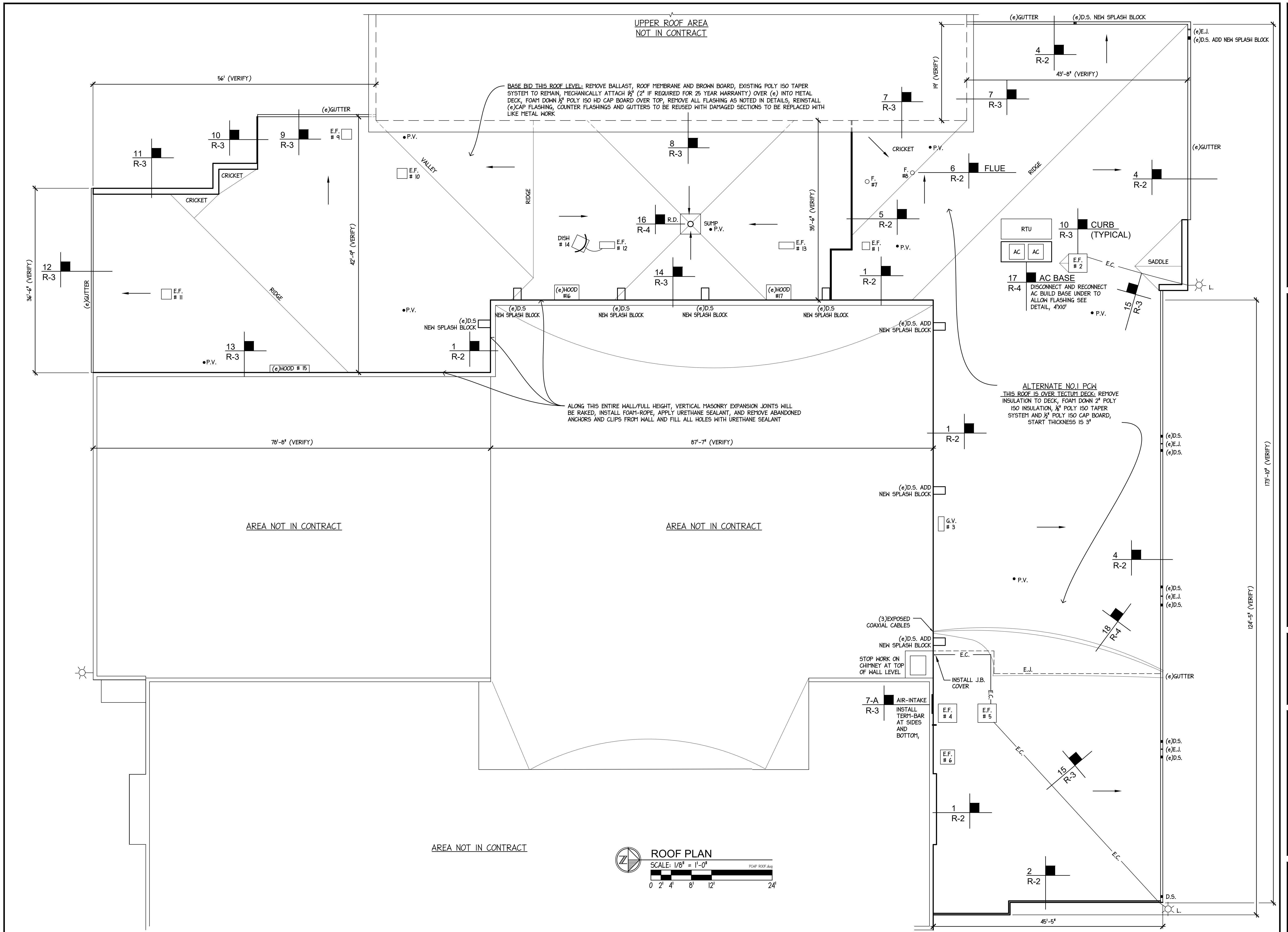
NO.	DATE	REVISIONS	REMARKS

PROJECT NO.  
24990319

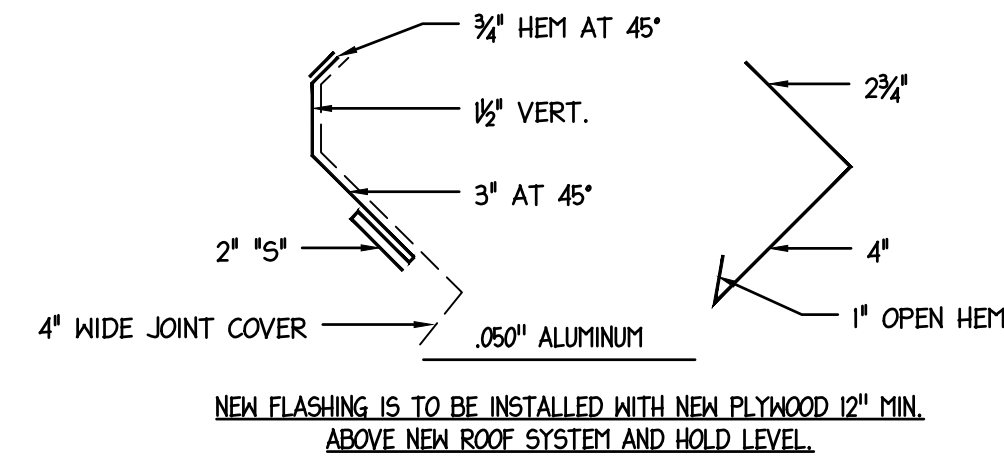
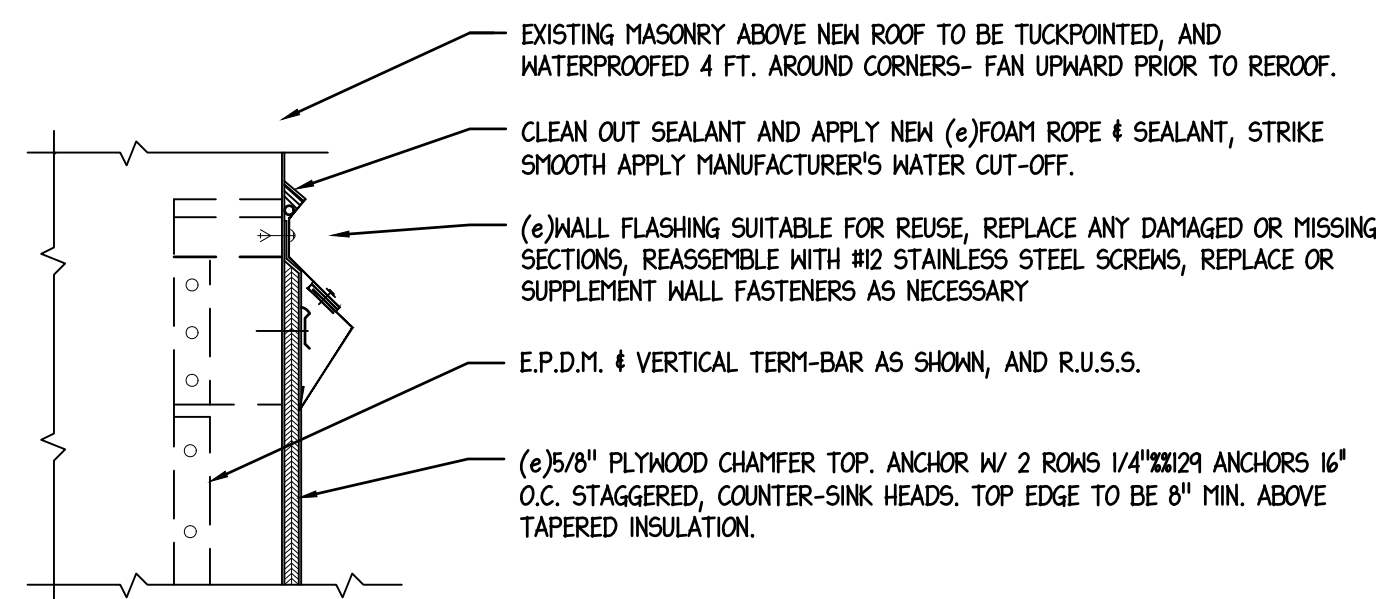
ISSUE DATE  
MARCH 24, 2020

SHEET  
**G-1.0**

OF 6 SHEETS

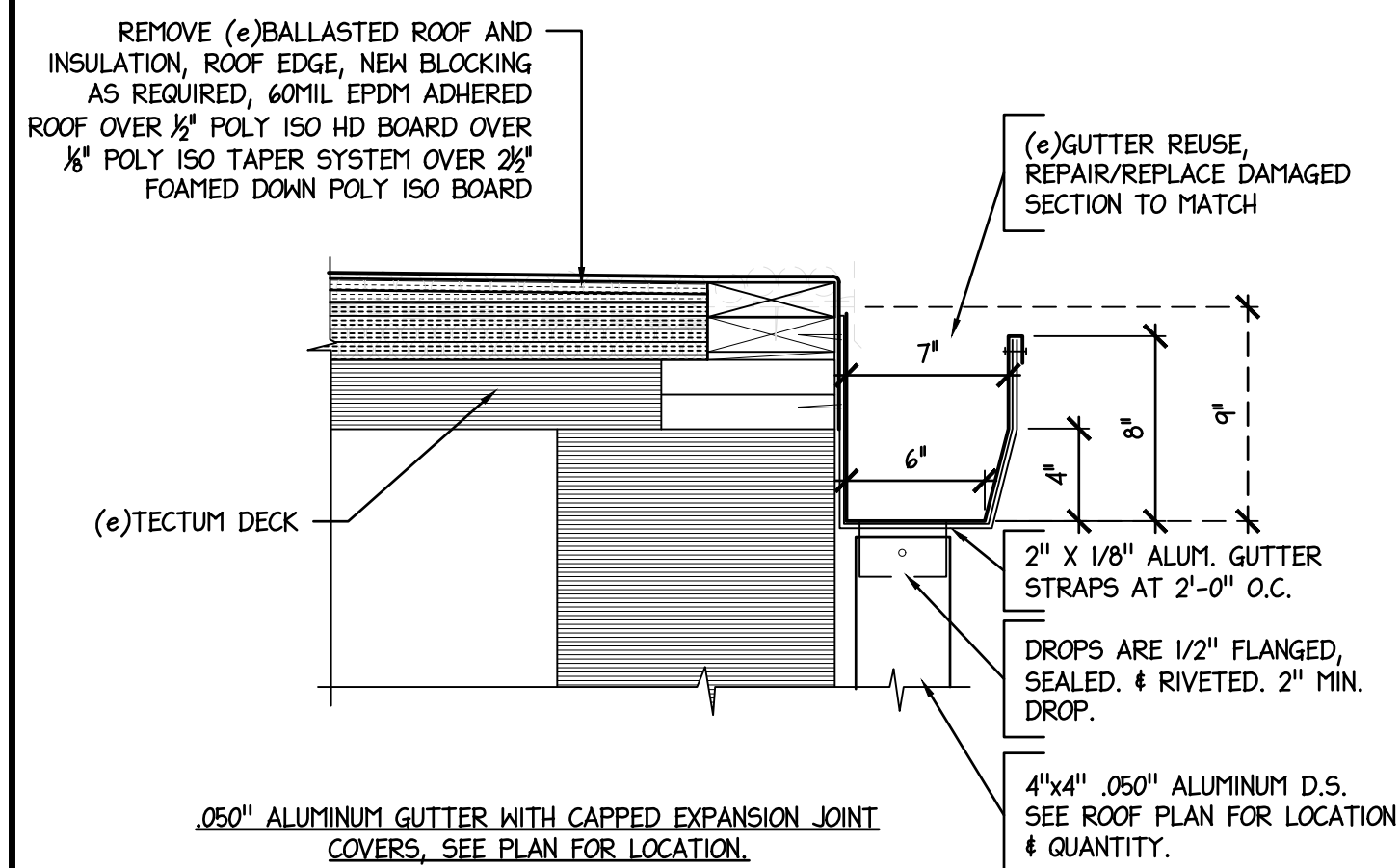


NO.	DATE	REVISIONS	REMARKS



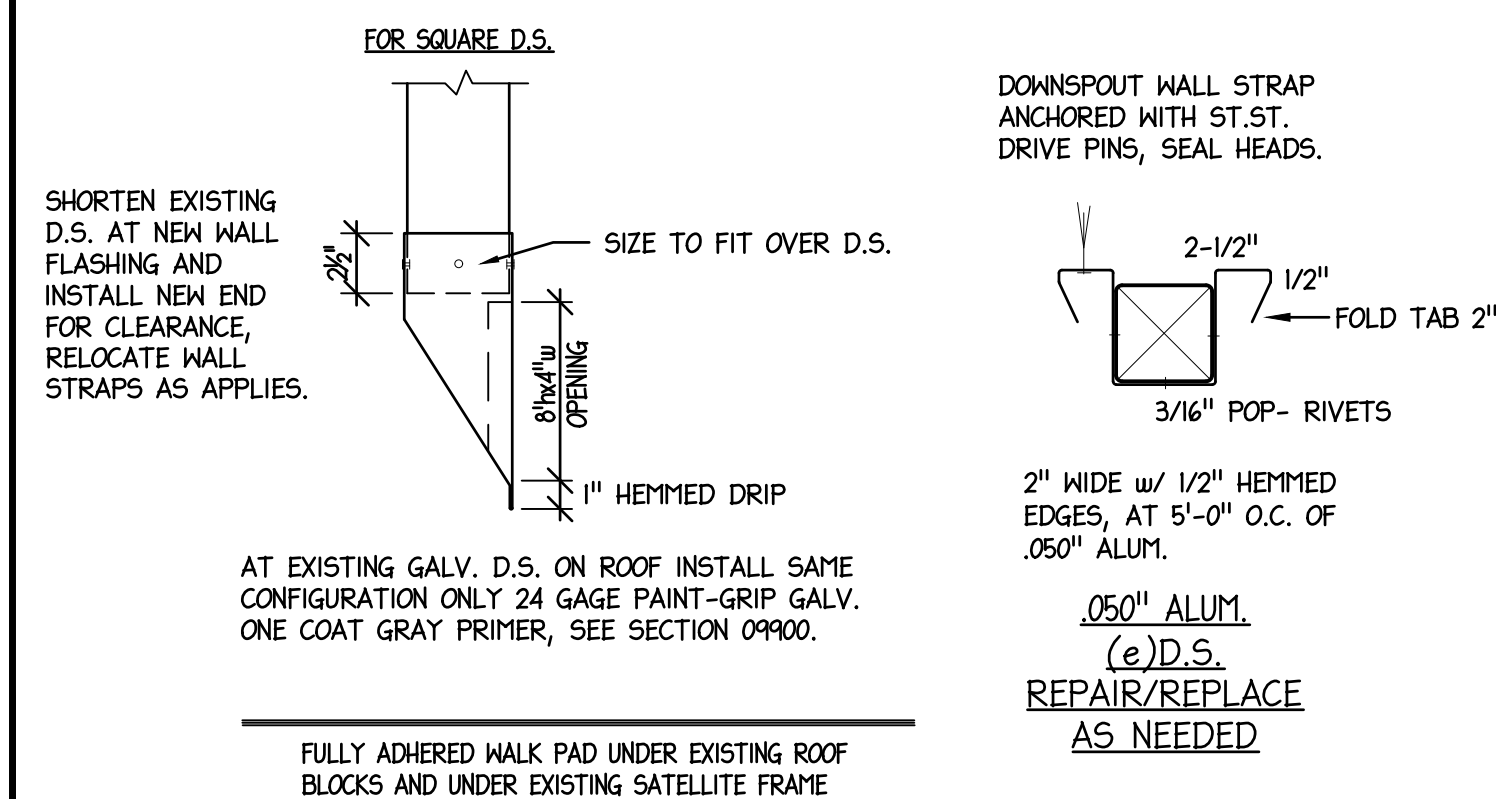
**1 EXISTING WALL FLASHING REUSE, REPLACE AS NEEDED**

R-2 SCALE: 1-1/2" = 1'-0"



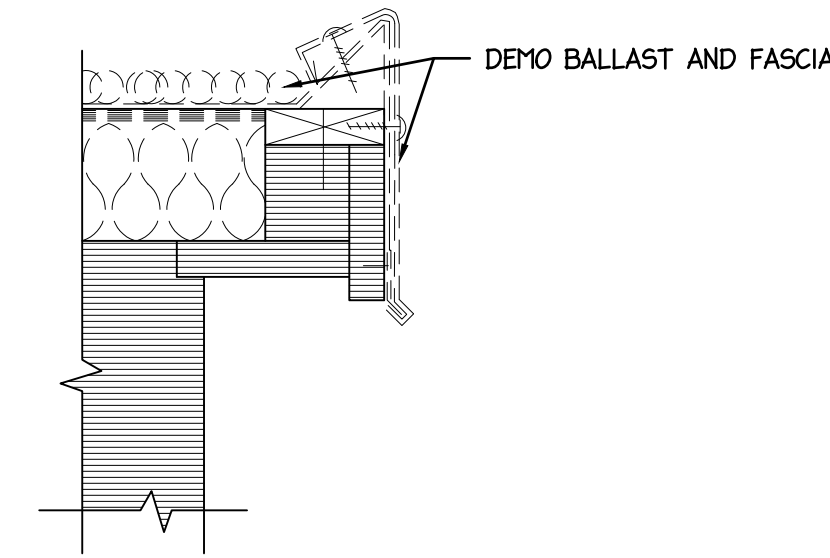
**4 GUTTER REUSE, REPLACE AS NEEDED**

R-2 SCALE: 1-1/2" = 1'-0"

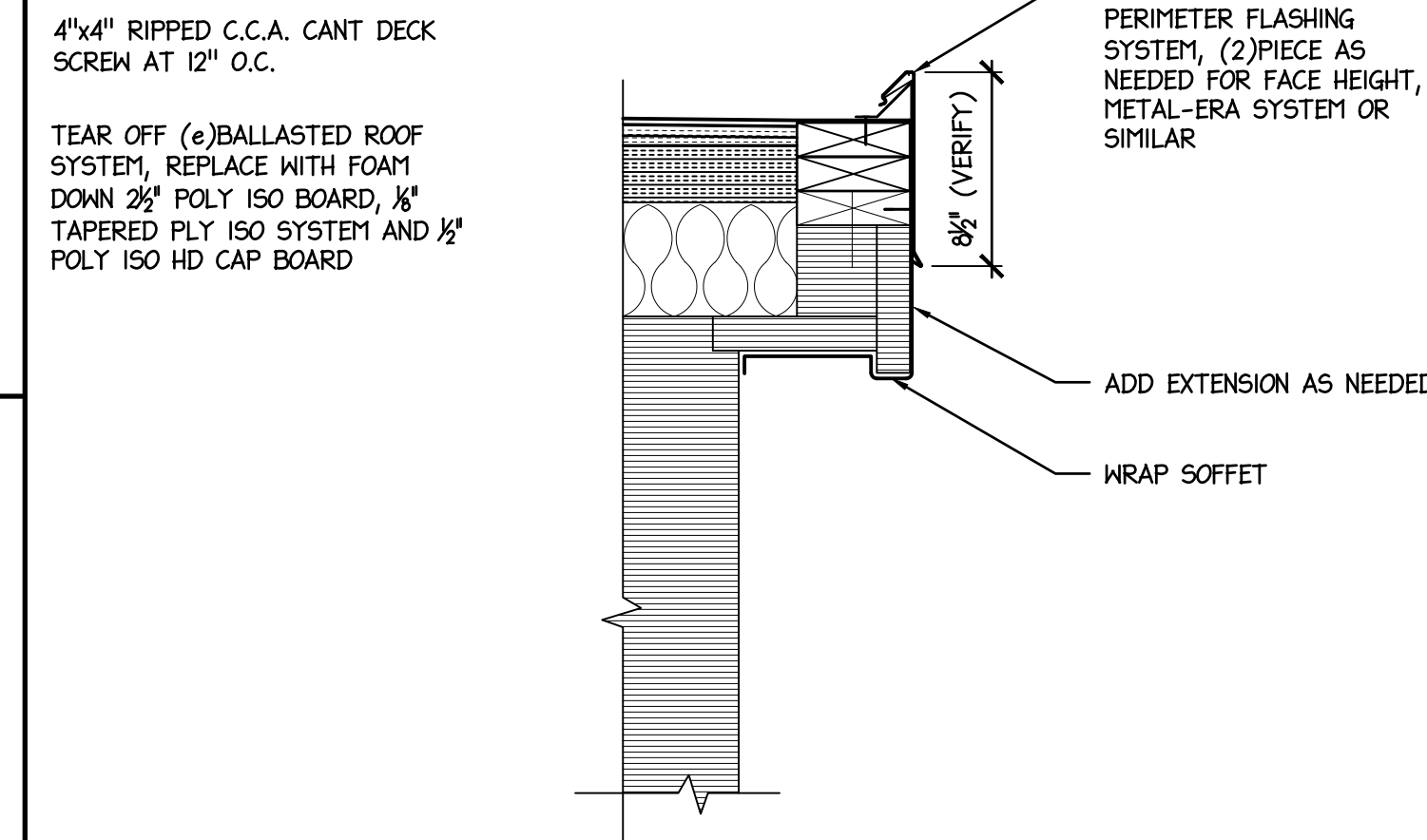


**EXISTING TYPICAL DOWNSPOUT DETAILS REUSE, REPLACE AS NEEDED**

SCALE: 1-1/2" = 1'-0"

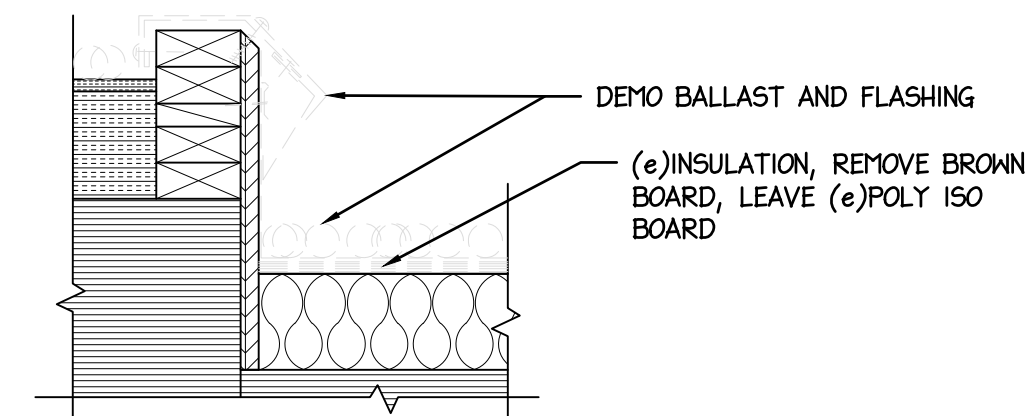


EXISTING CONDITIONS

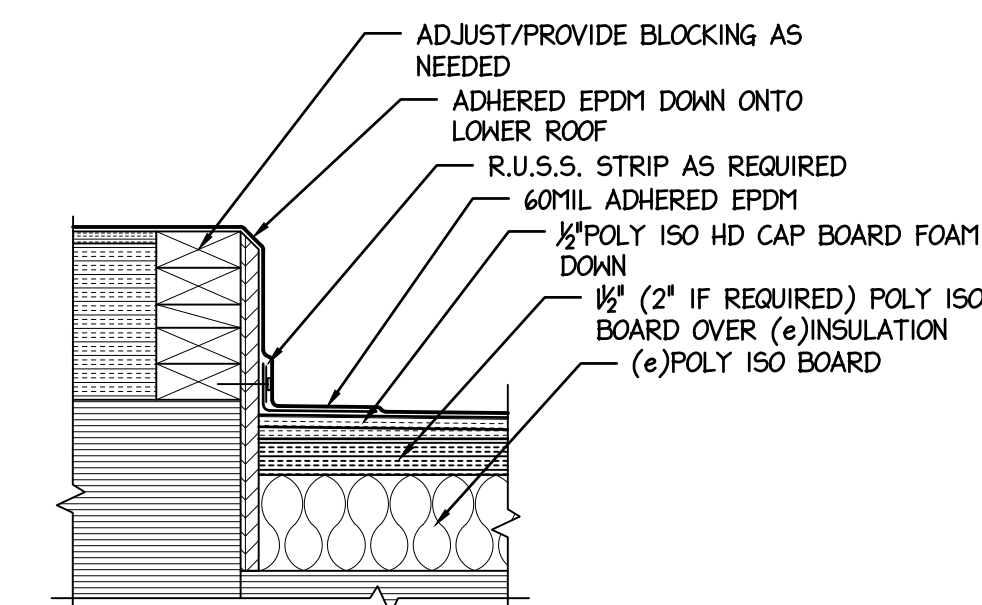


**2 EDGE TERMINATION**

R-2 SCALE: 1-1/2" = 1'-0"



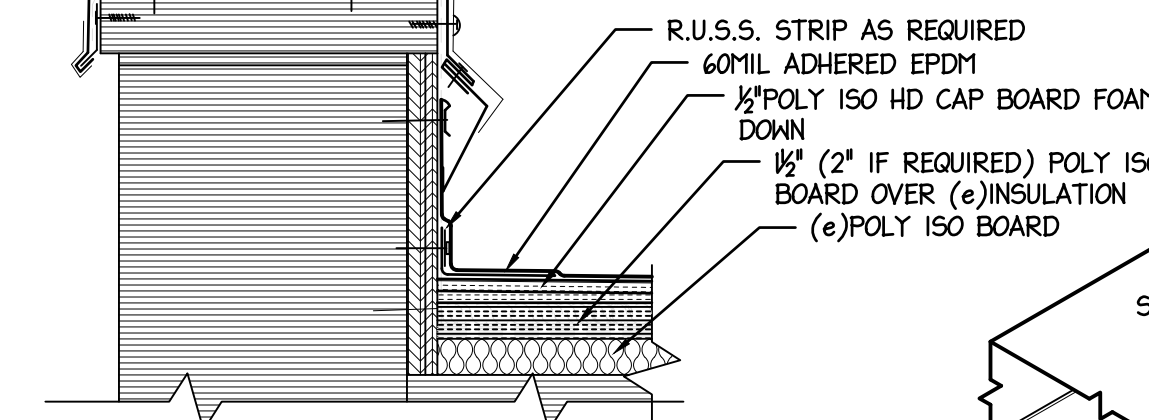
EXISTING CONDITIONS



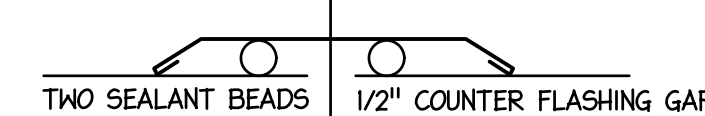
**5 EDGE TRANSITION**

R-2 SCALE: 1-1/2" = 1'-0"

EXTEND E.P.D.M. OVER FACE OF COPING, CONTINUOUS CLIP

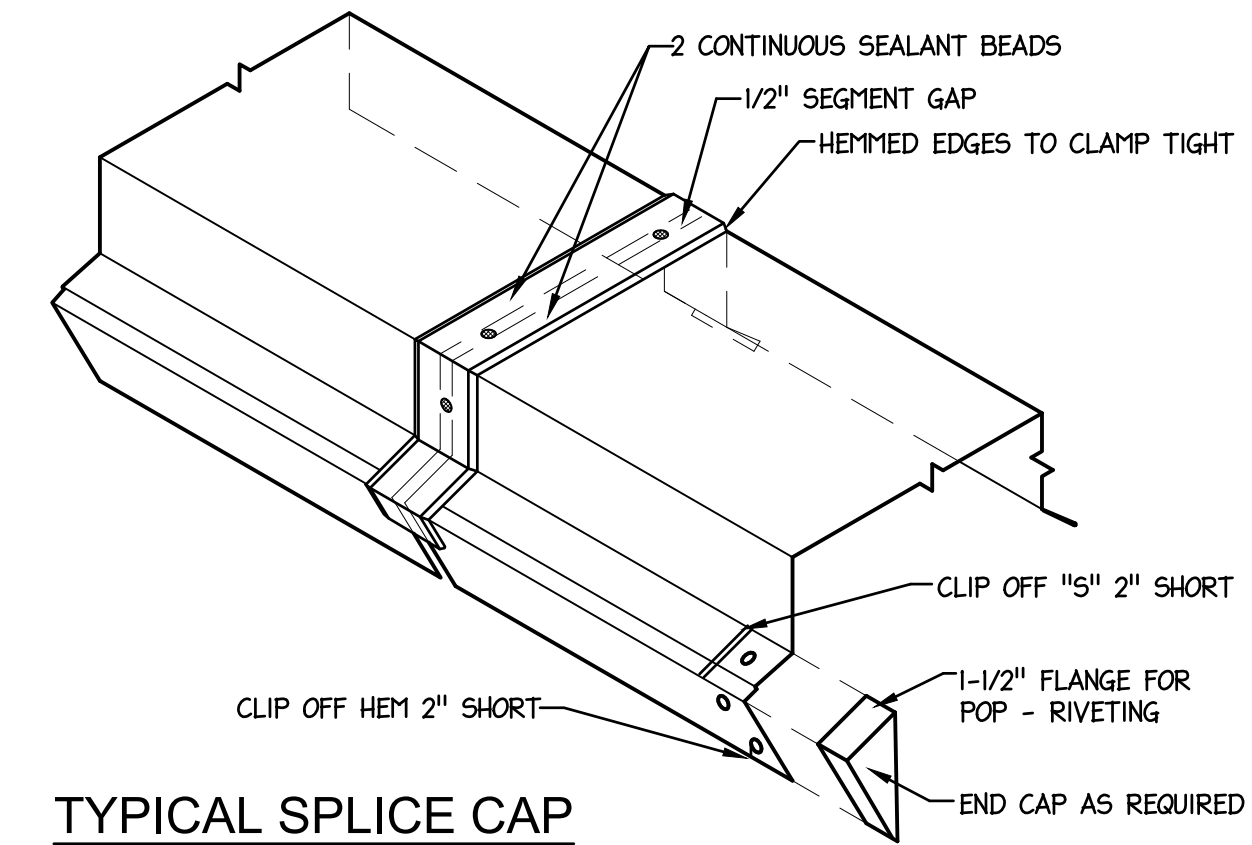


TYPICAL JOINT COVER BREAK EDGES TO CLAMP WHEN SCREWED IN PLACE

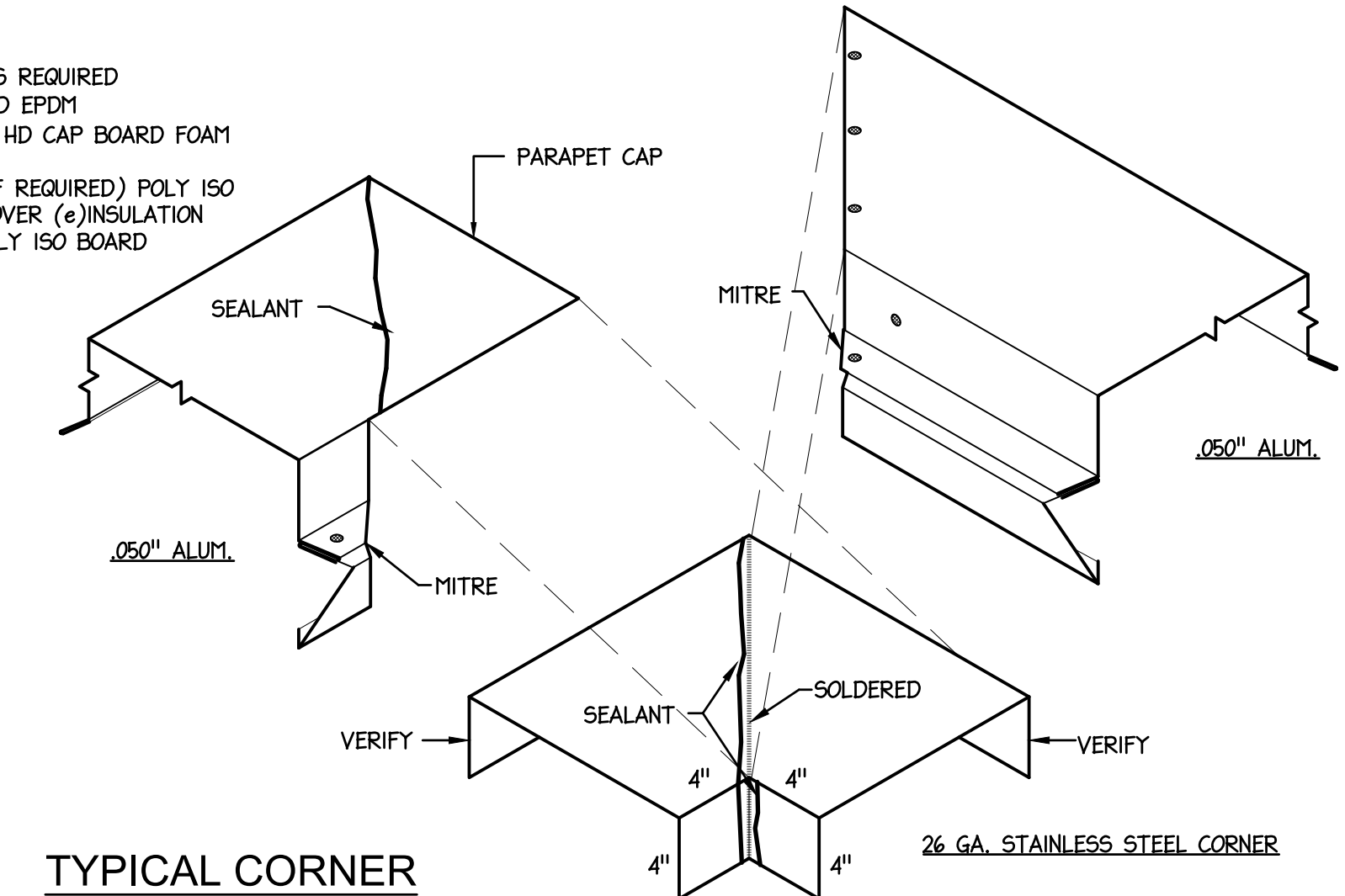


**3 PARAPET FLASHING REUSE, REPLACE AS NEEDED**

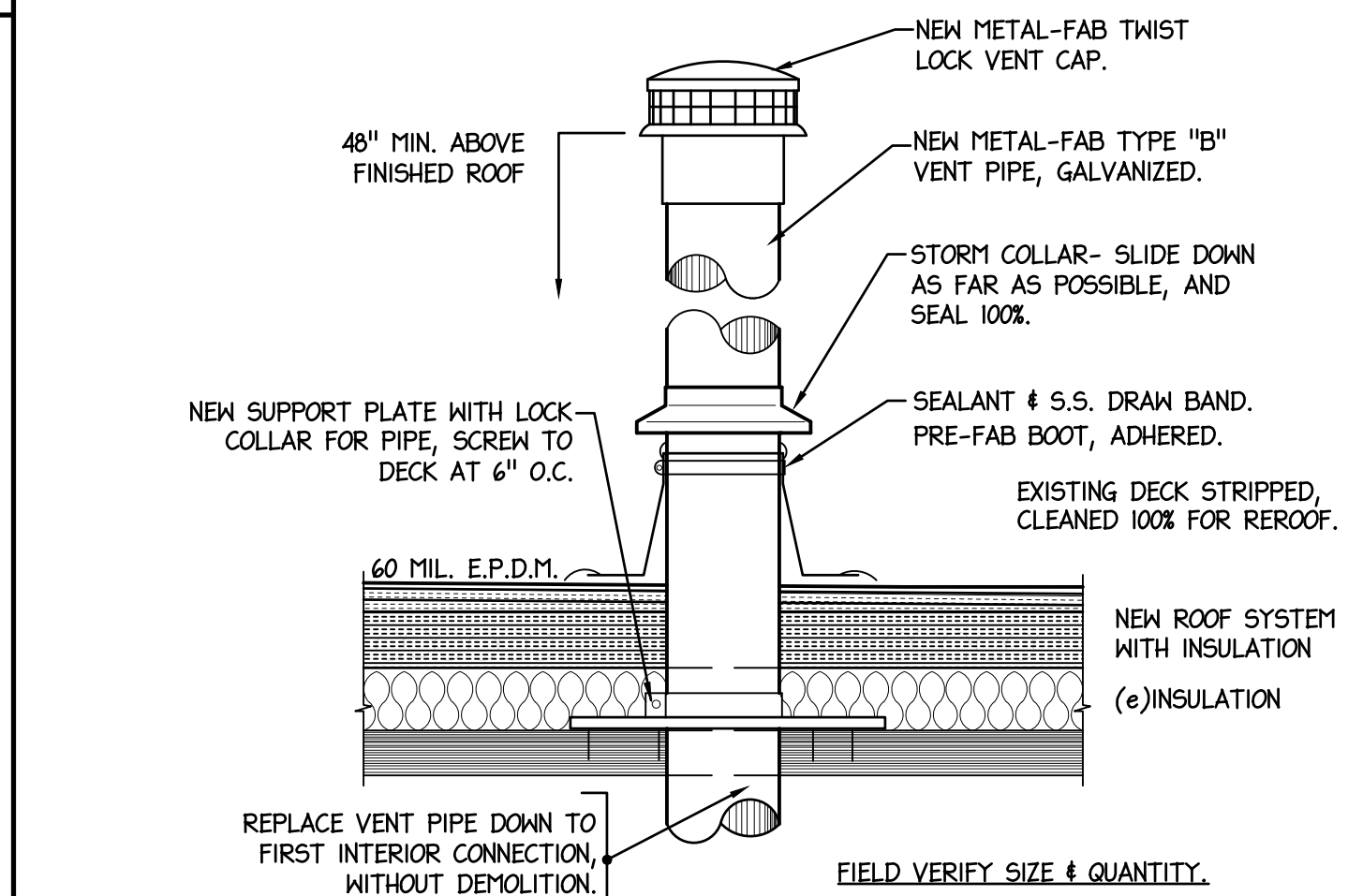
R-2 SCALE: 1-1/2" = 1'-0"



**TYPICAL SPLICE CAP**

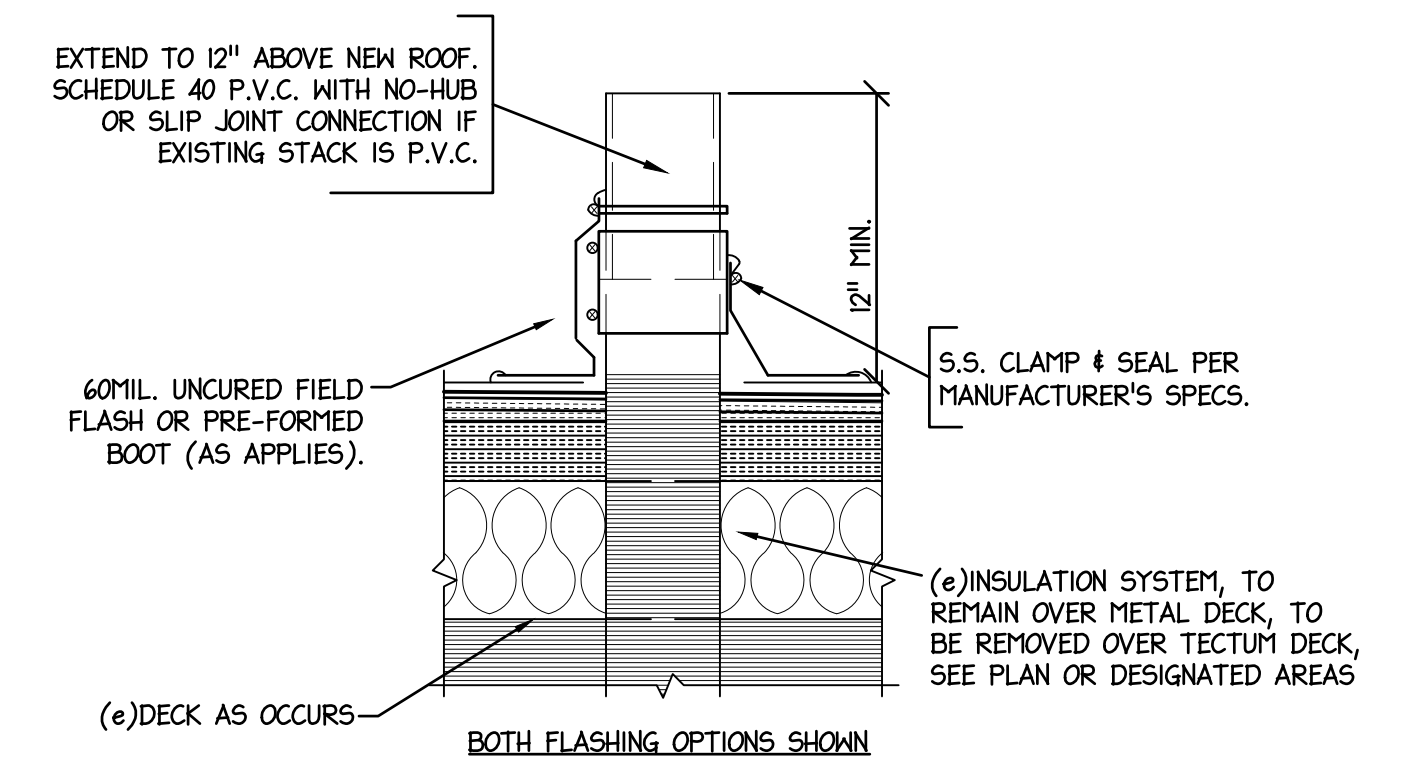


**TYPICAL CORNER**



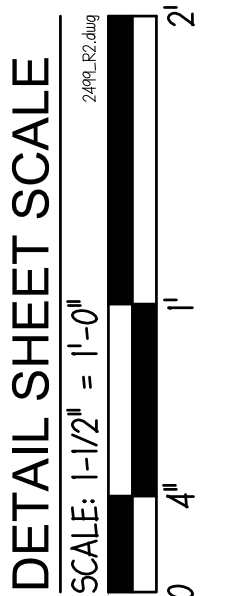
**6 FLUE STACK / FLASHING**

R-2 SCALE: 1-1/2" = 1'-0"

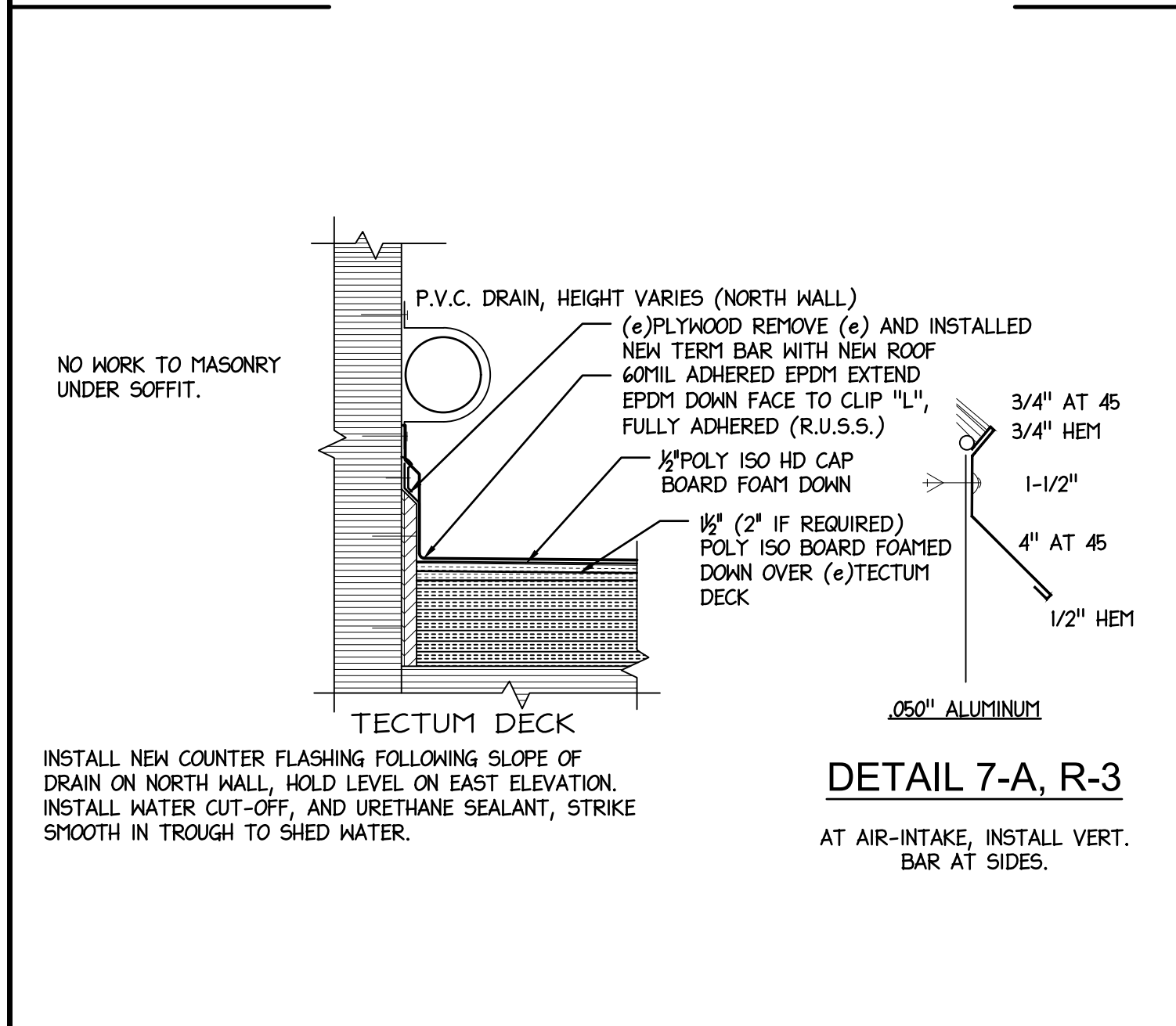
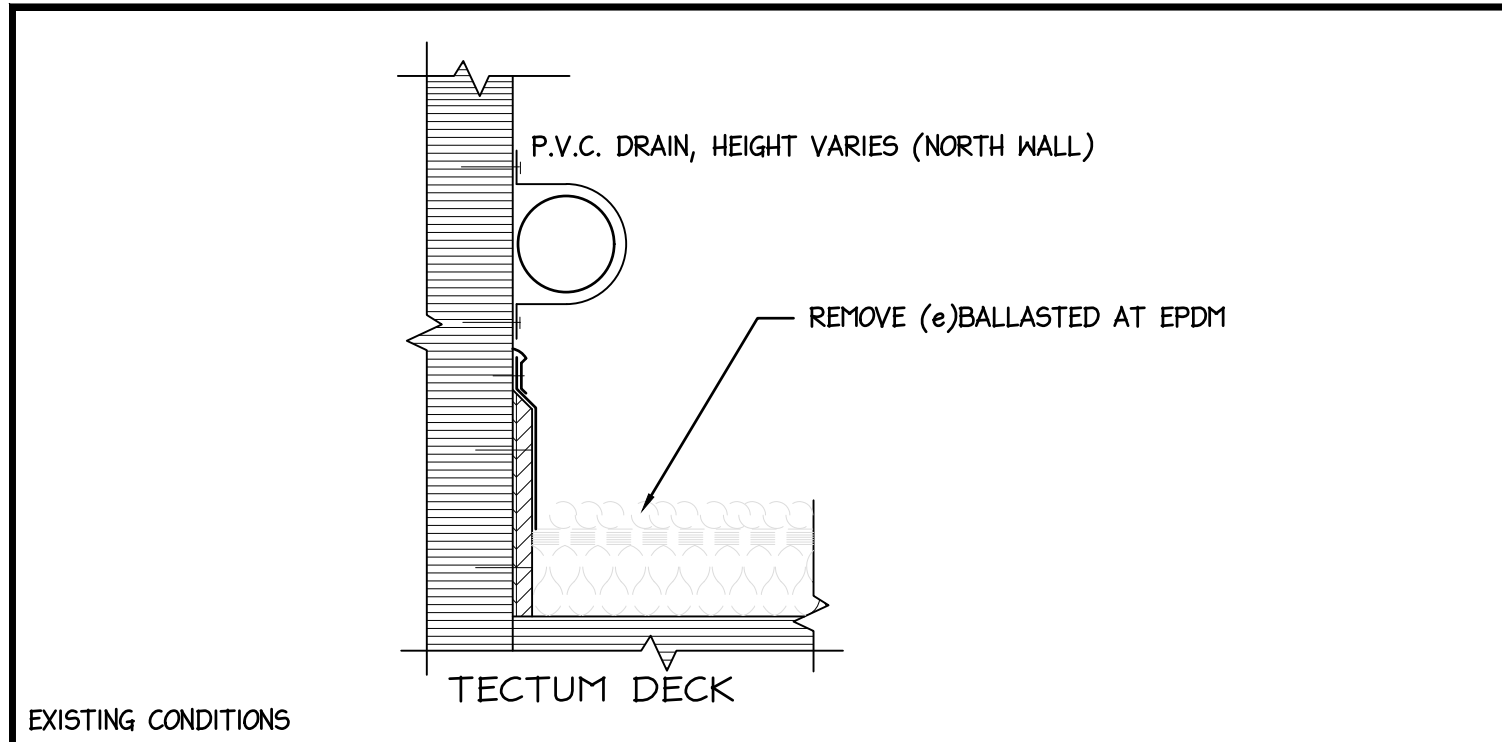


**7 TYPICAL PLUMBING VENT DETAIL**

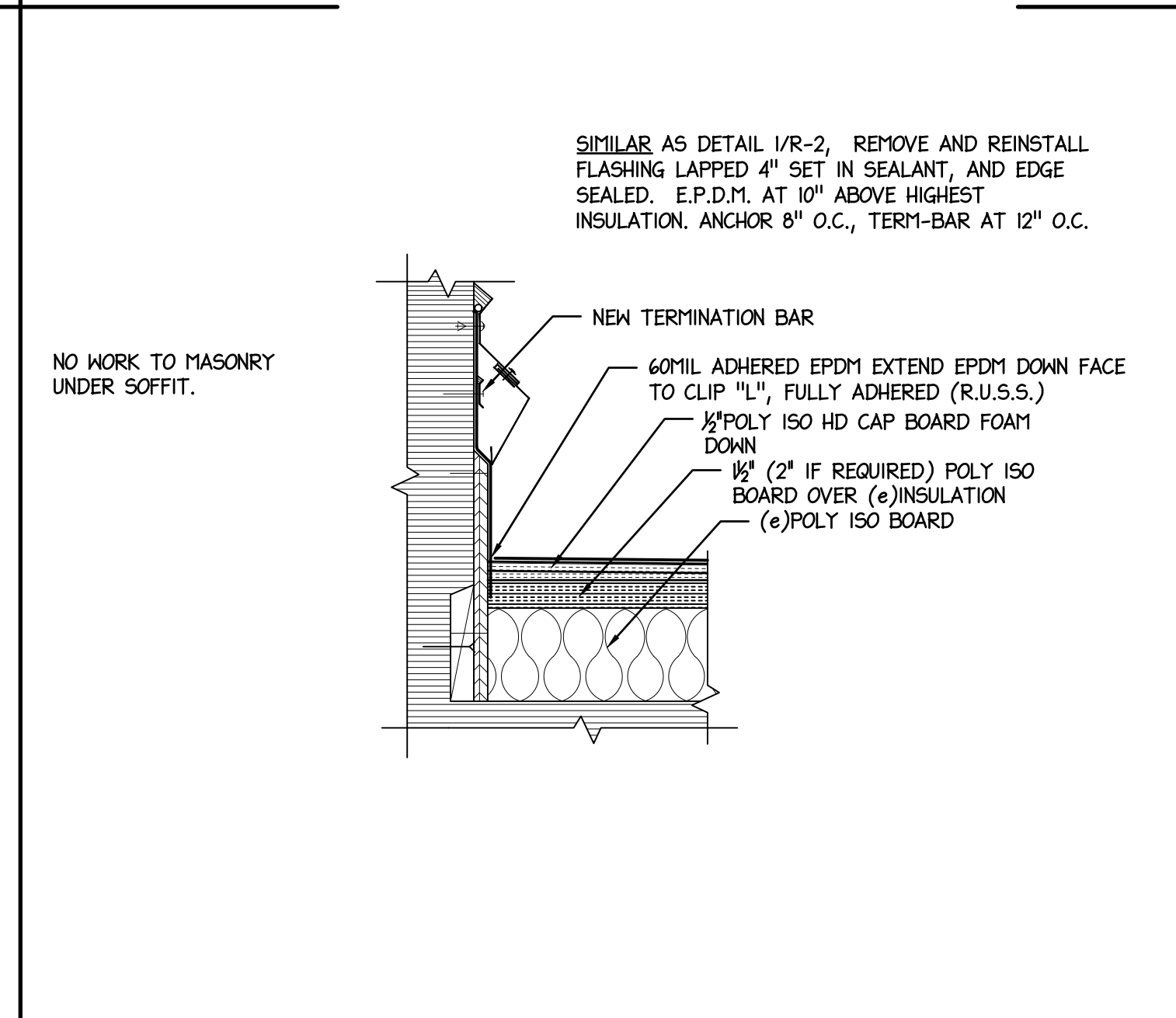
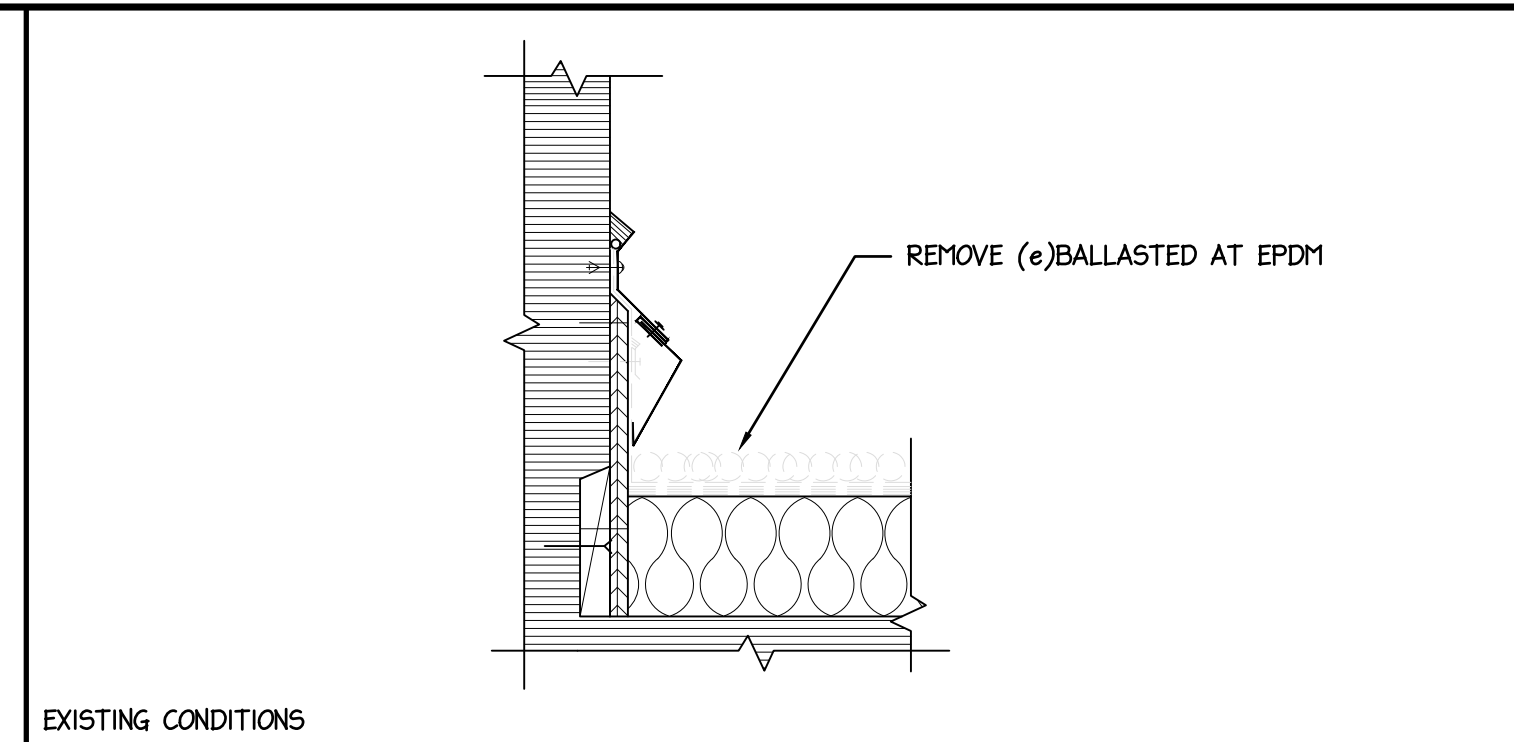
R-2 SCALE: 1-1/2" = 1'-0"



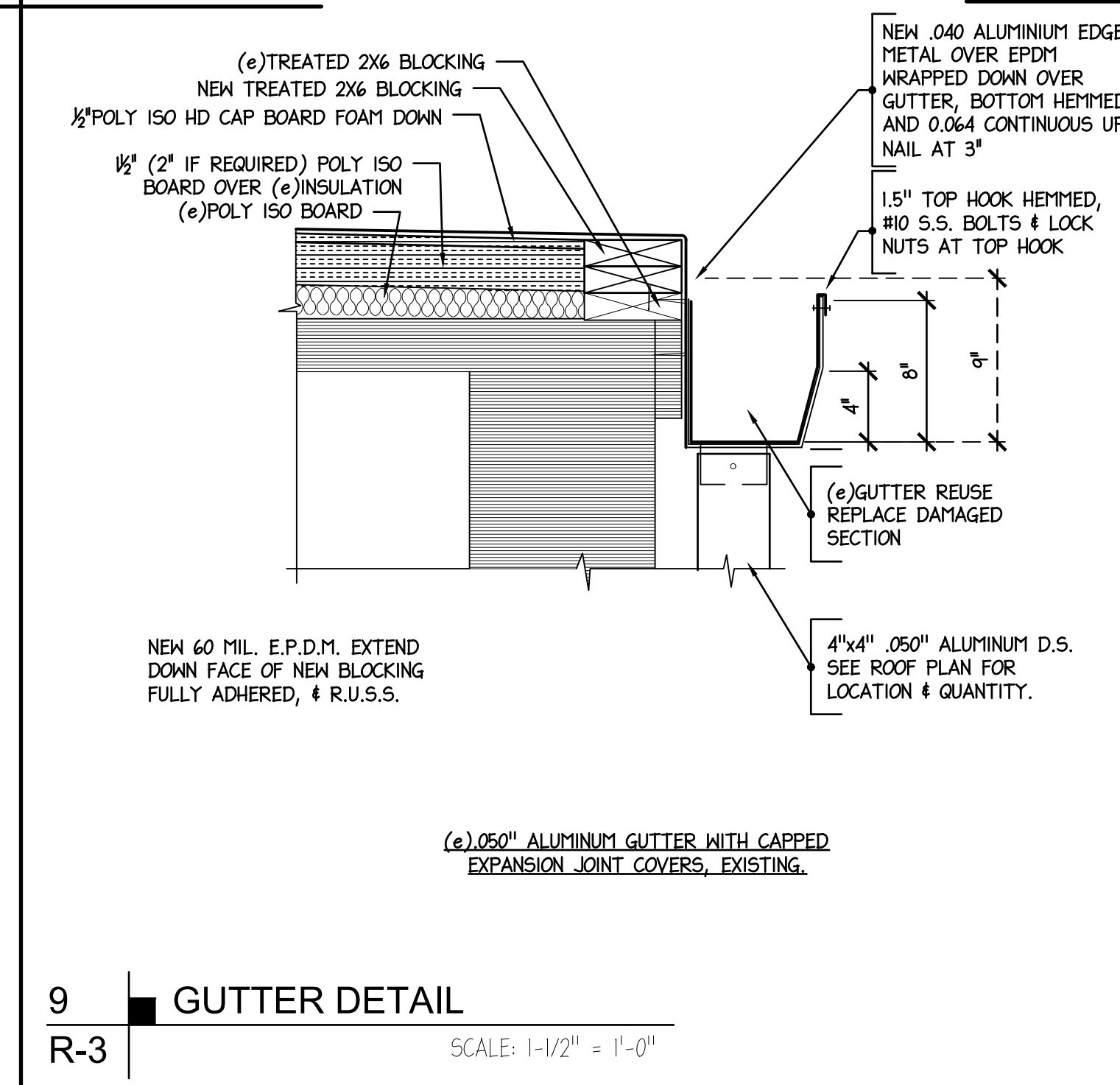
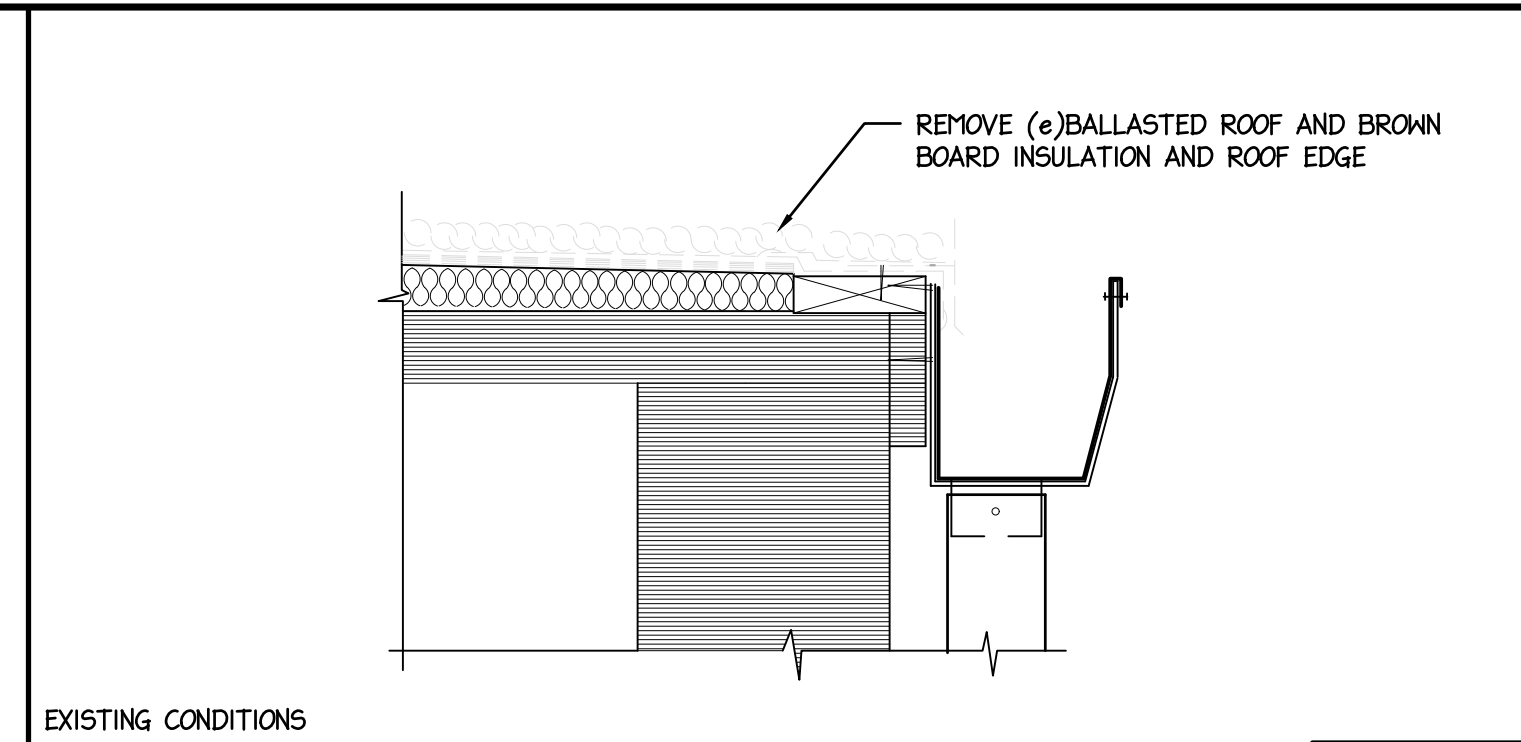
NO.	DATE	REVISIONS	REMARKS



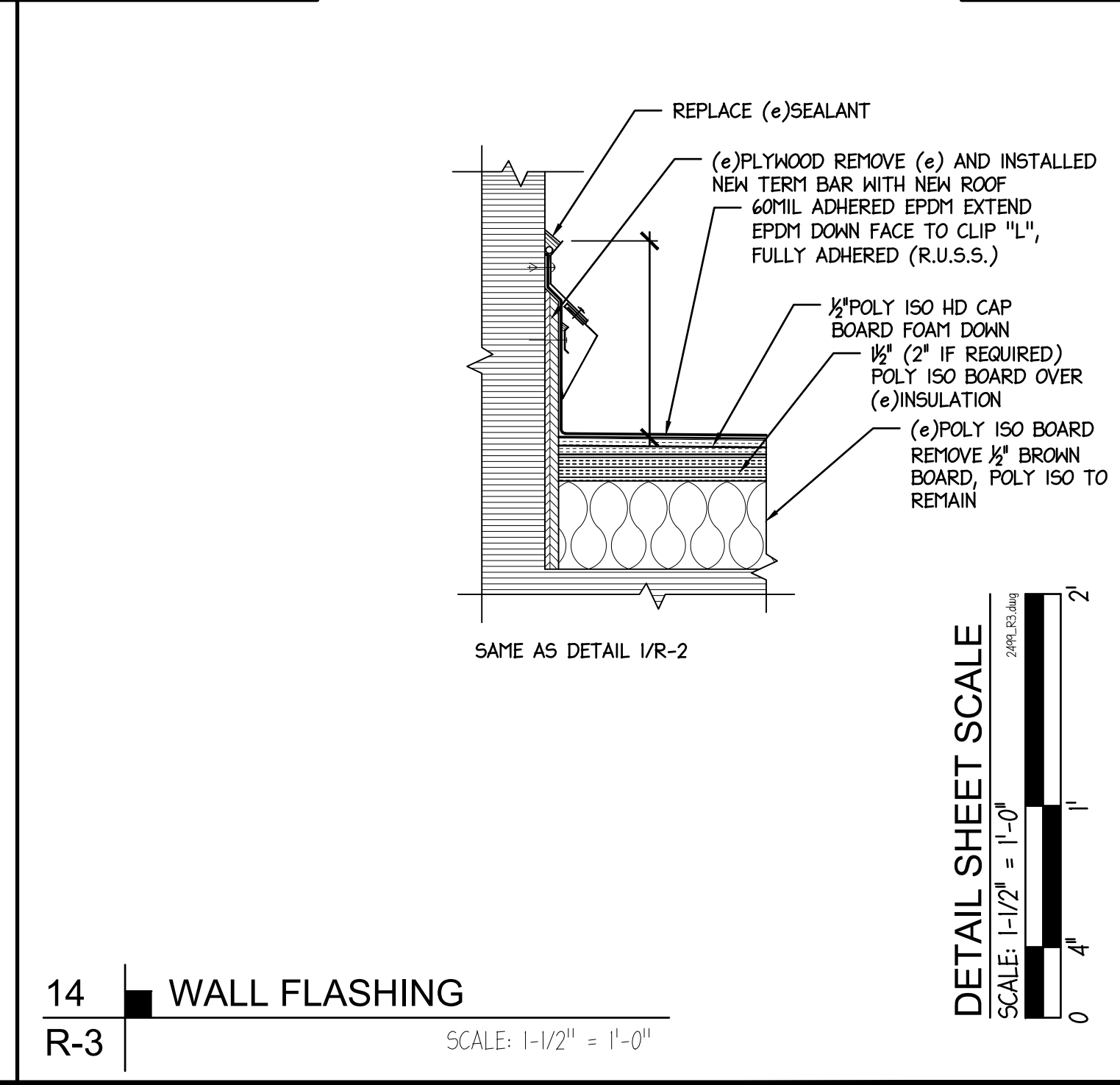
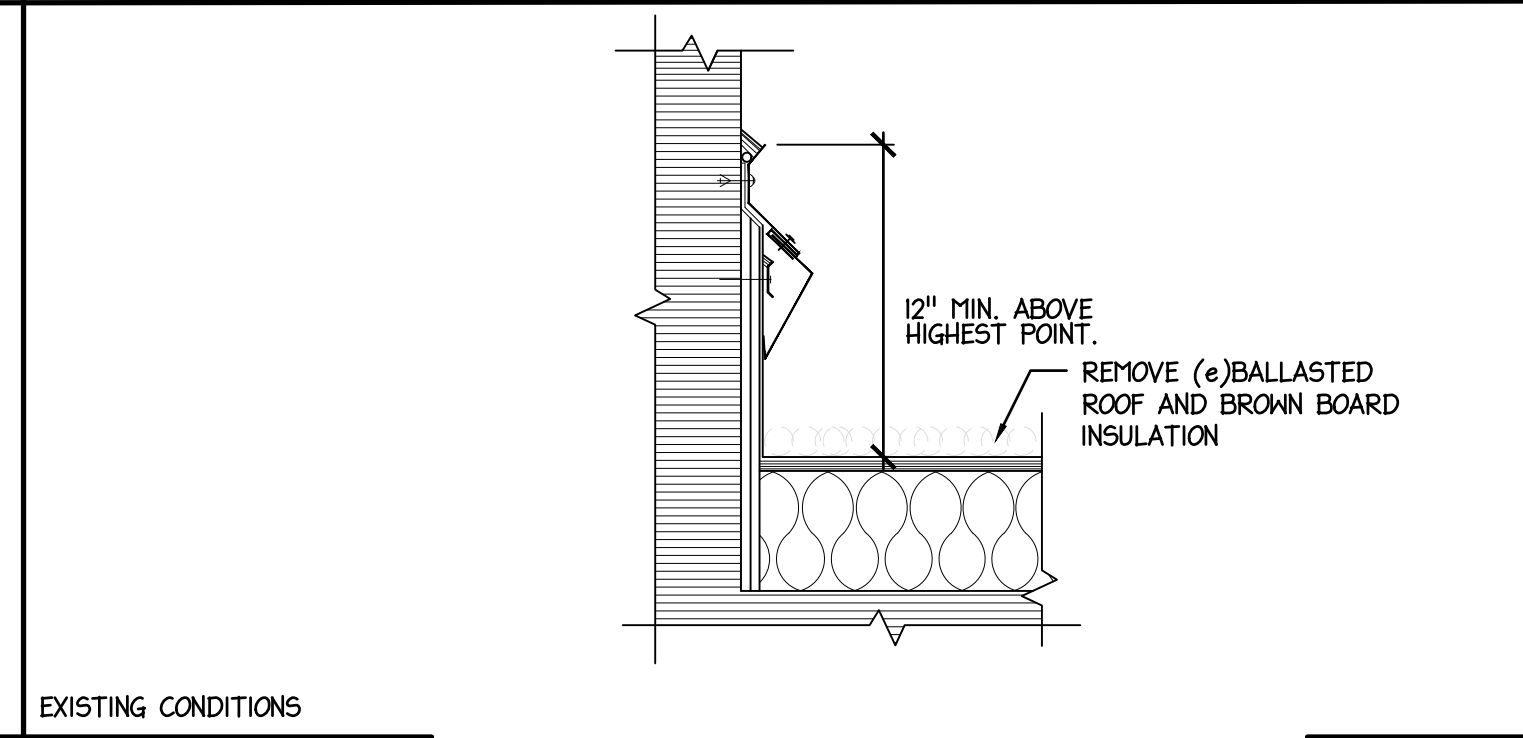
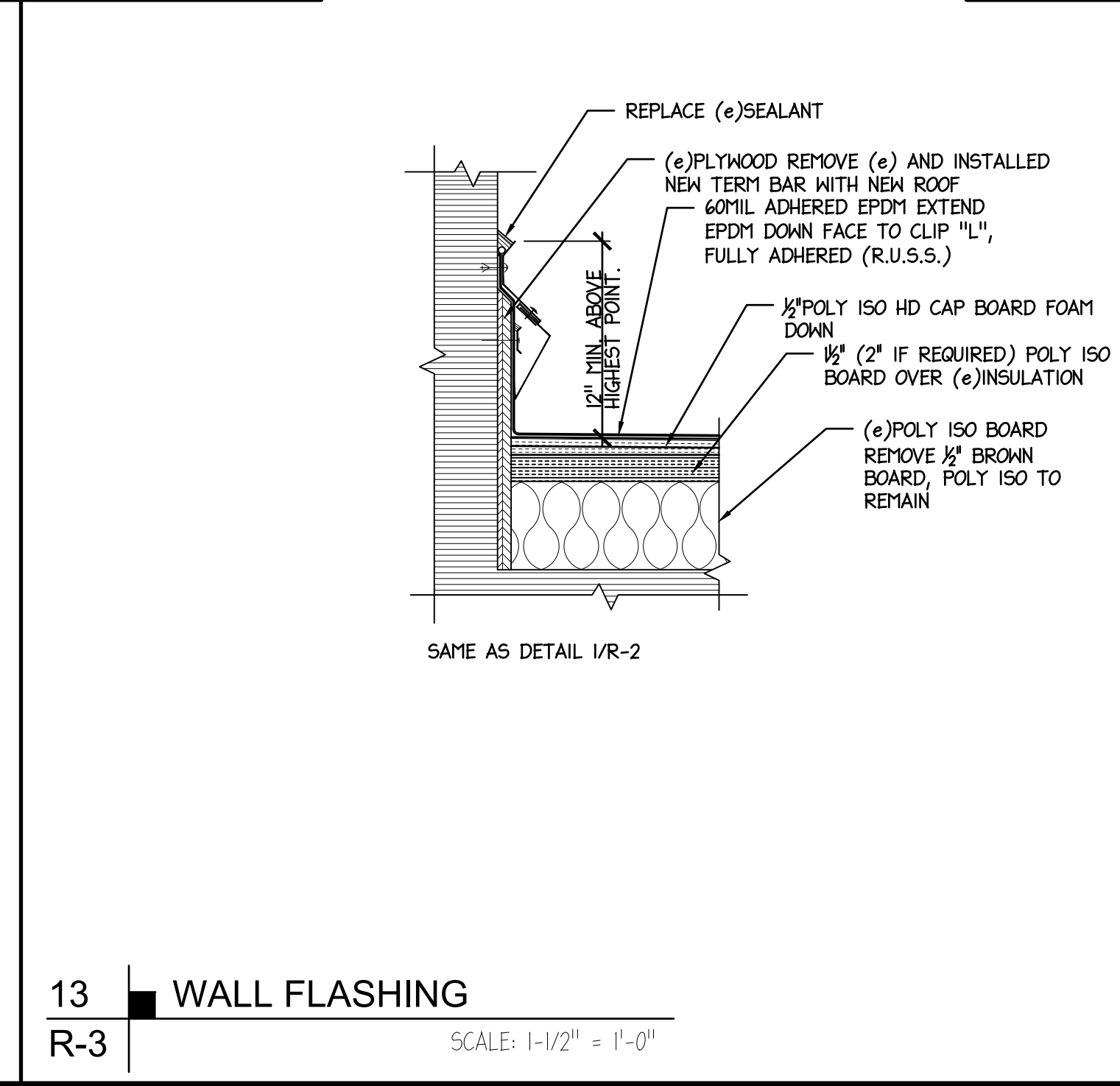
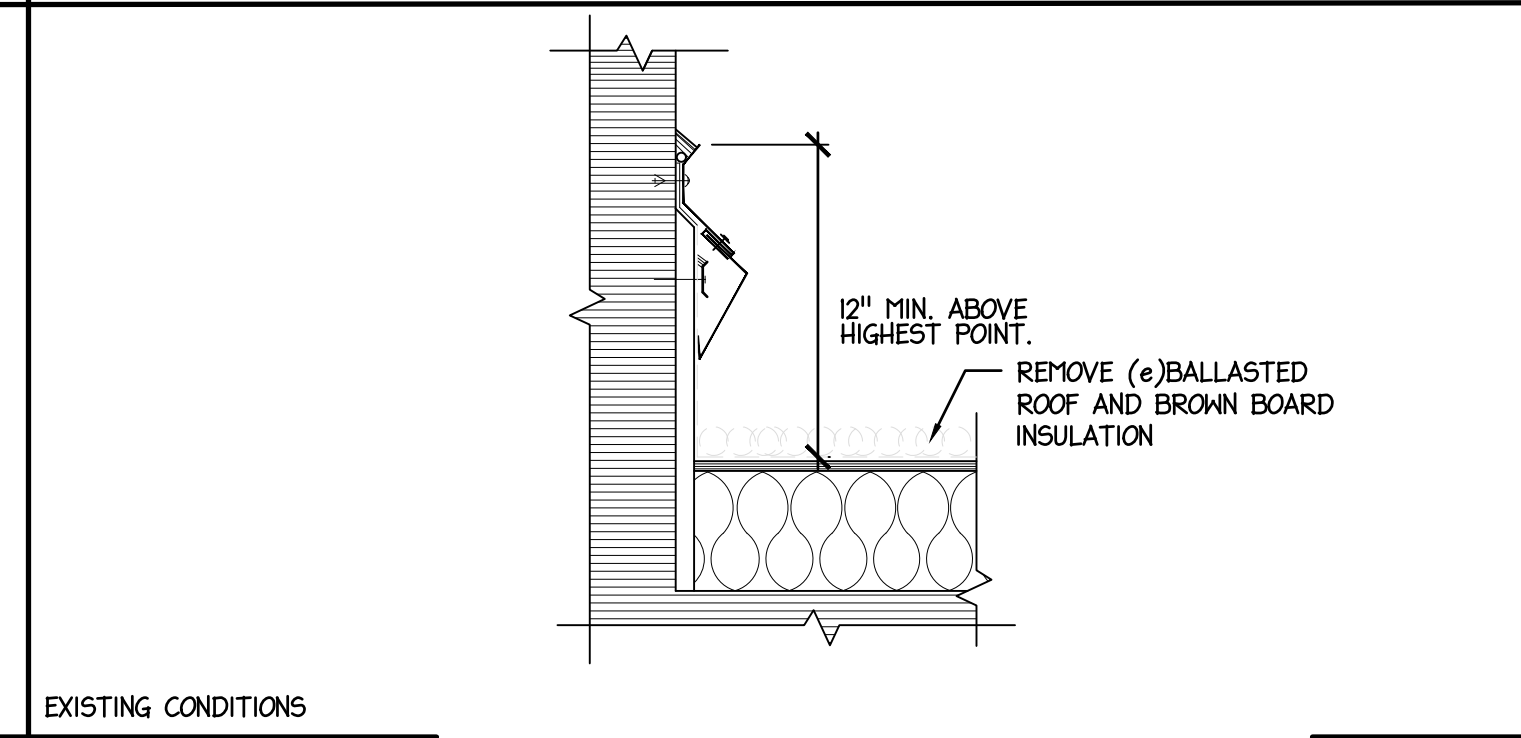
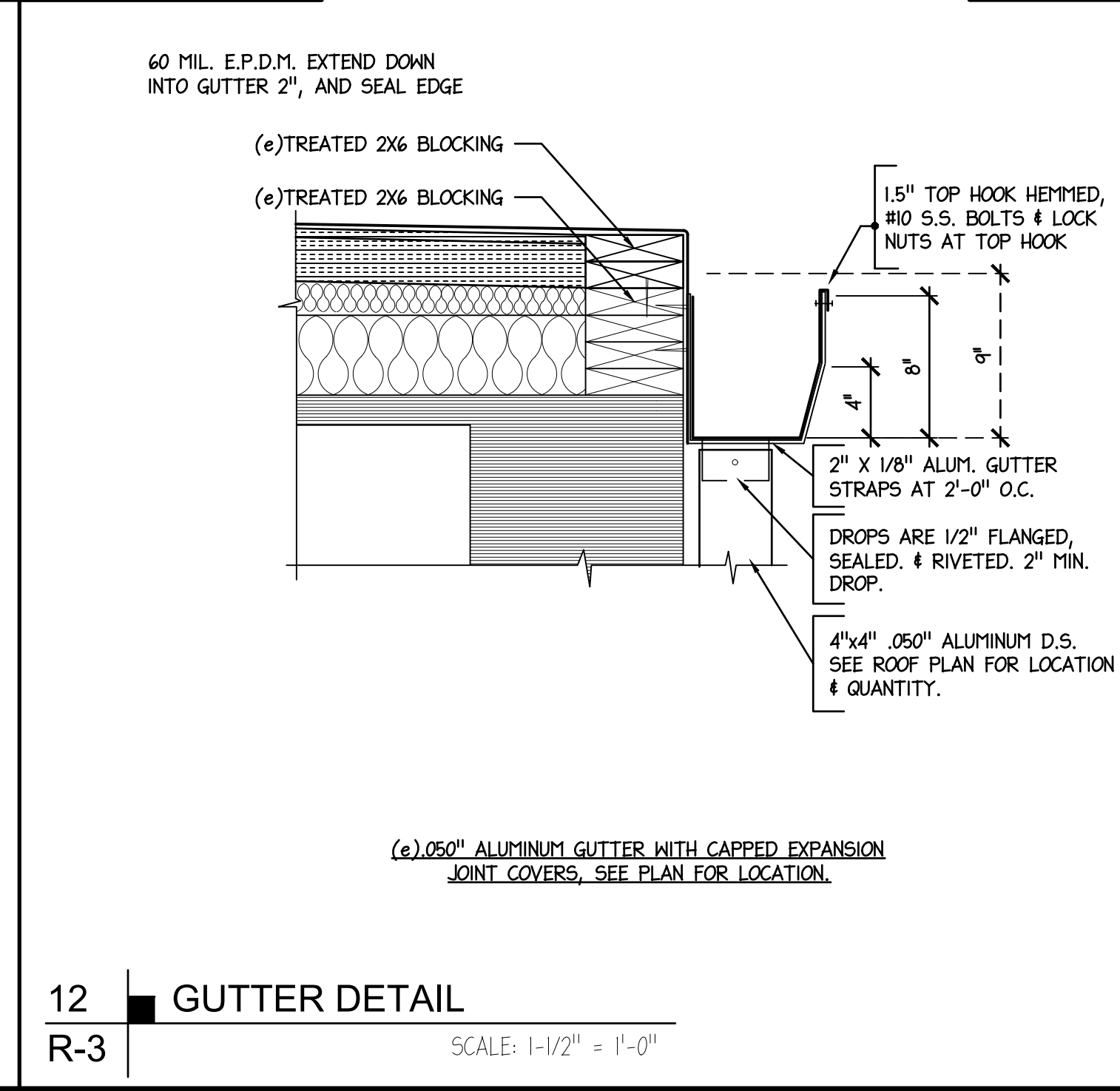
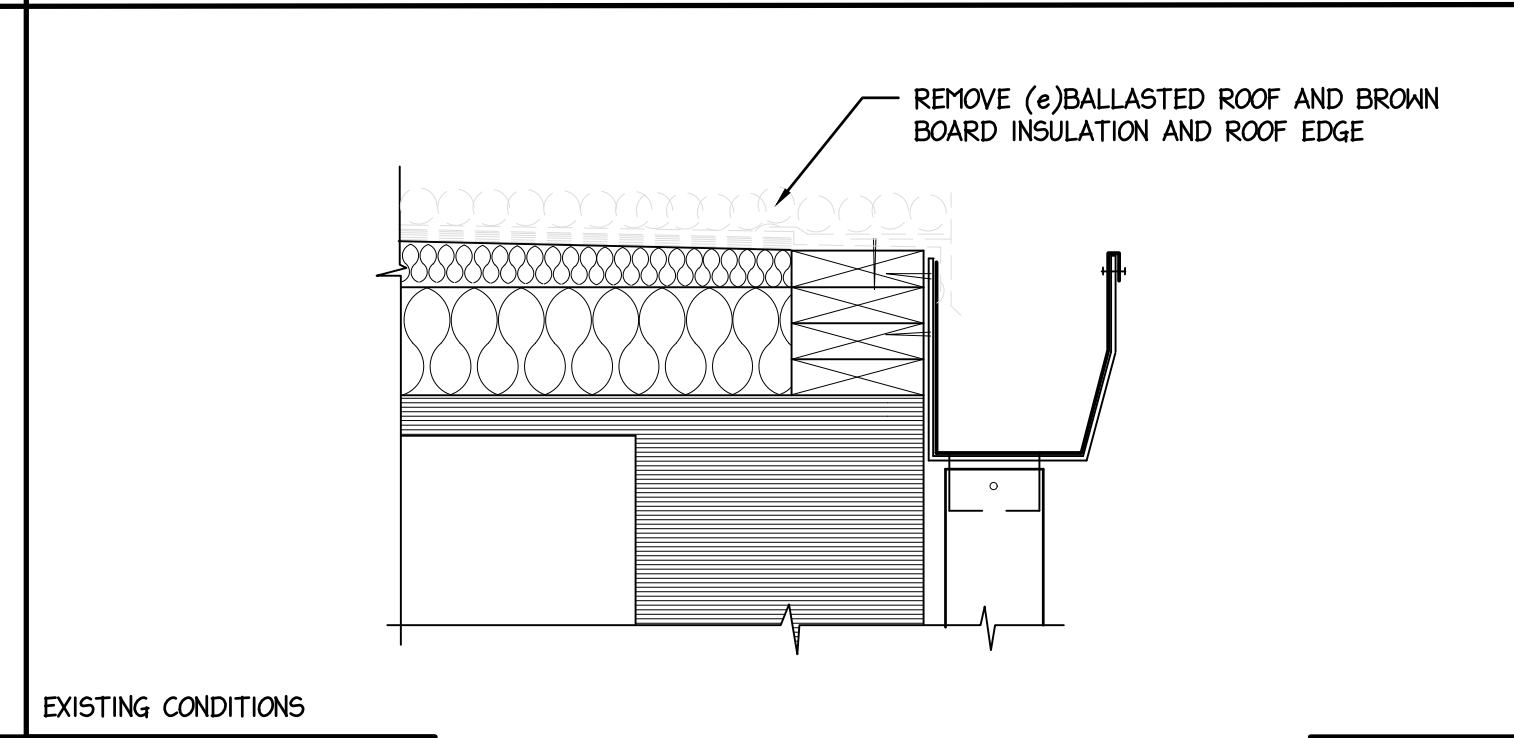
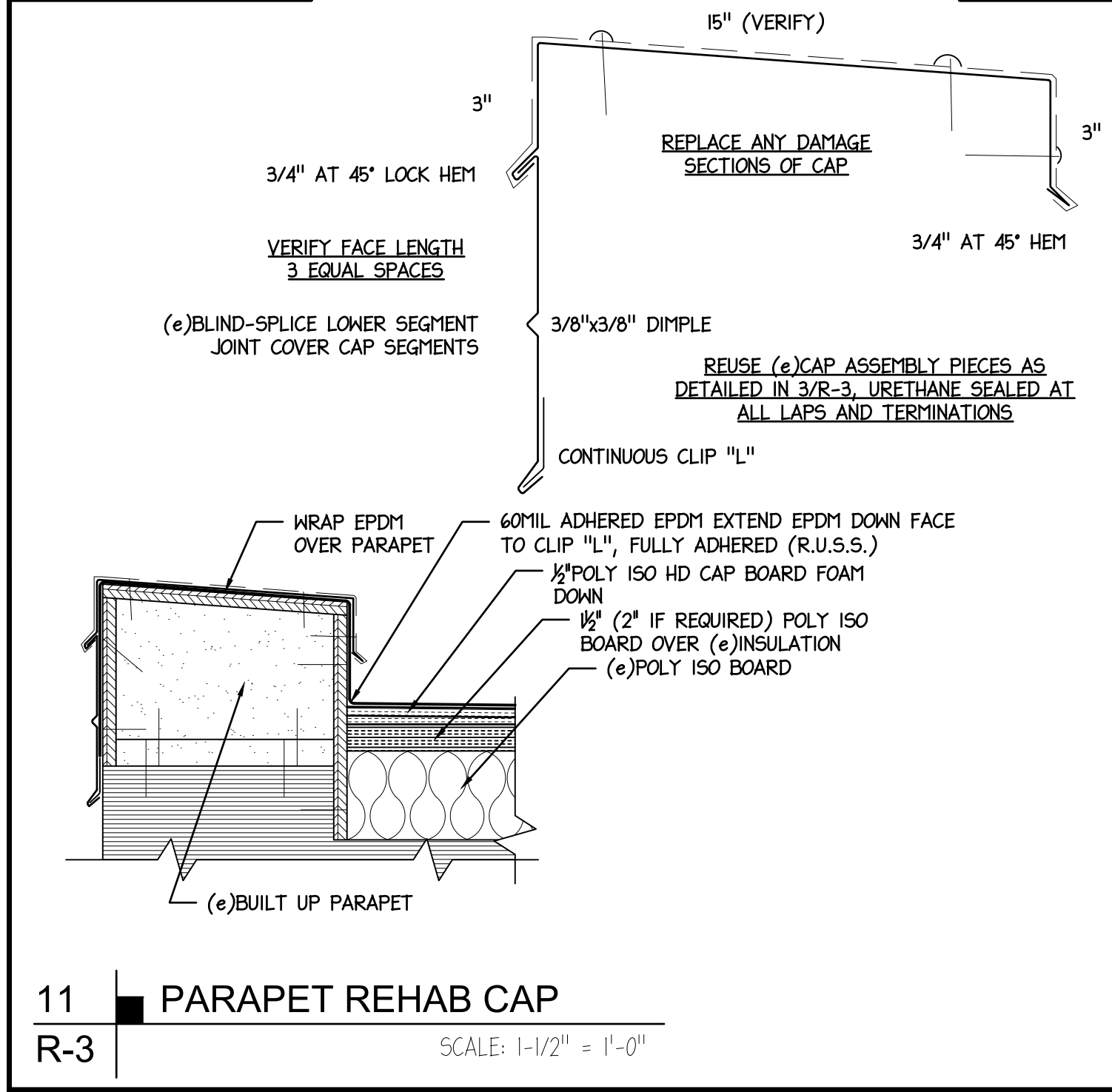
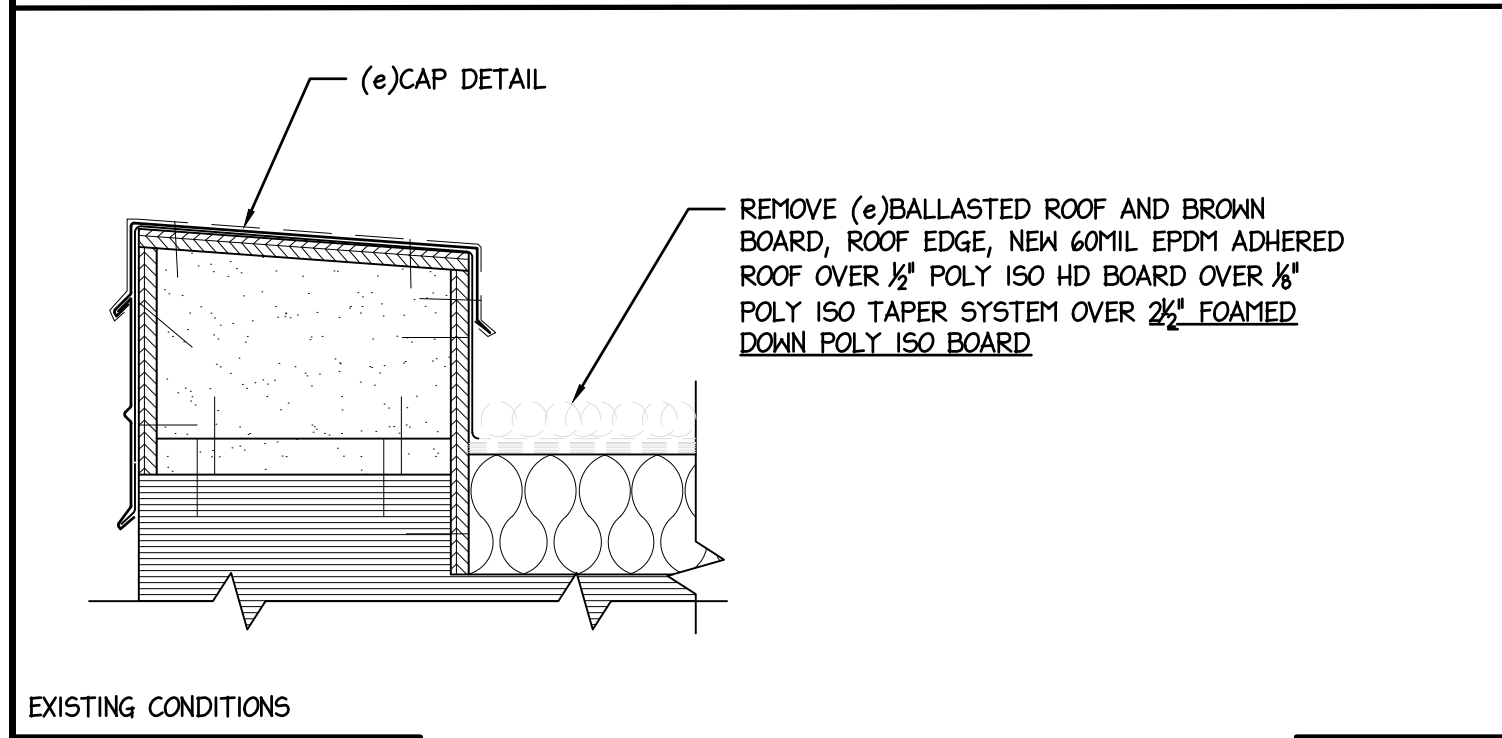
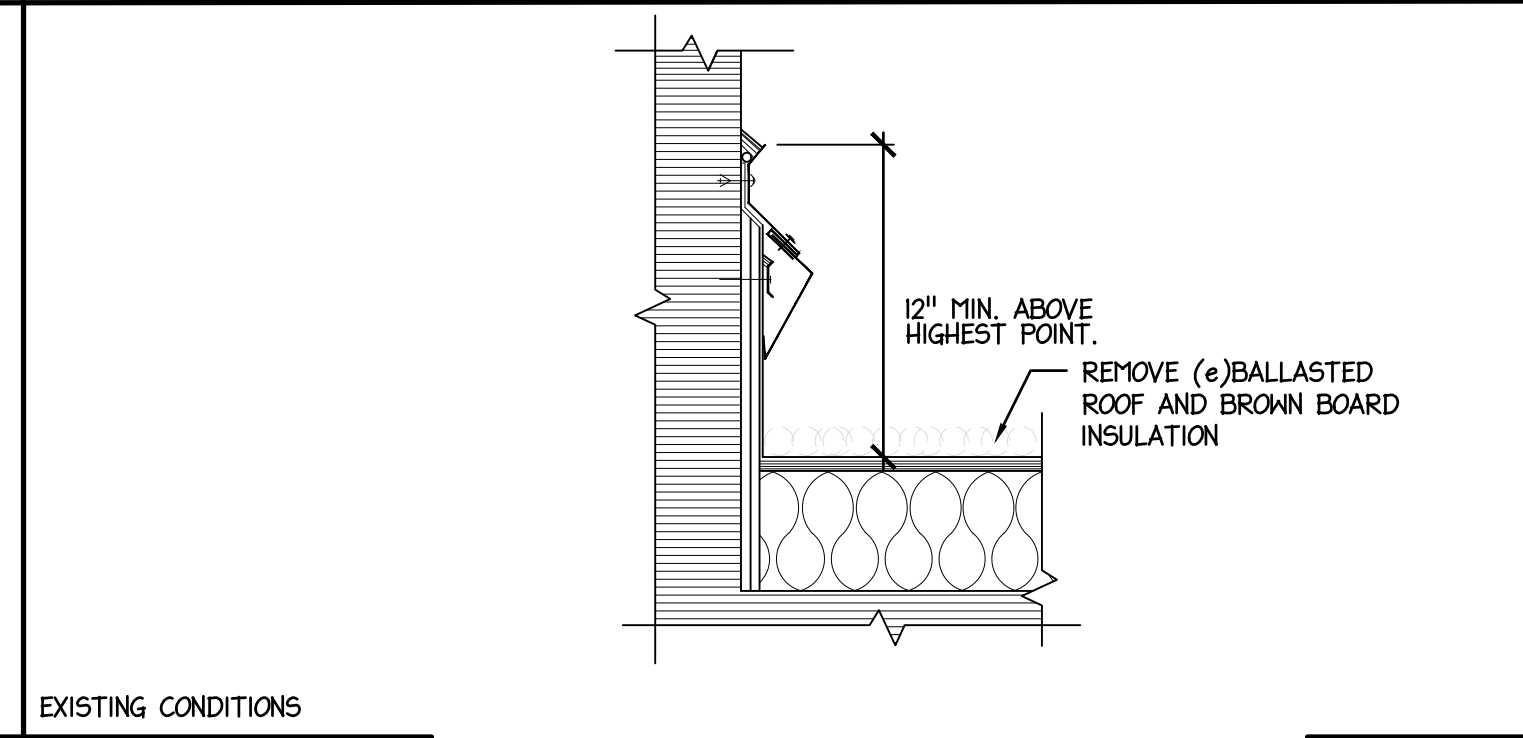
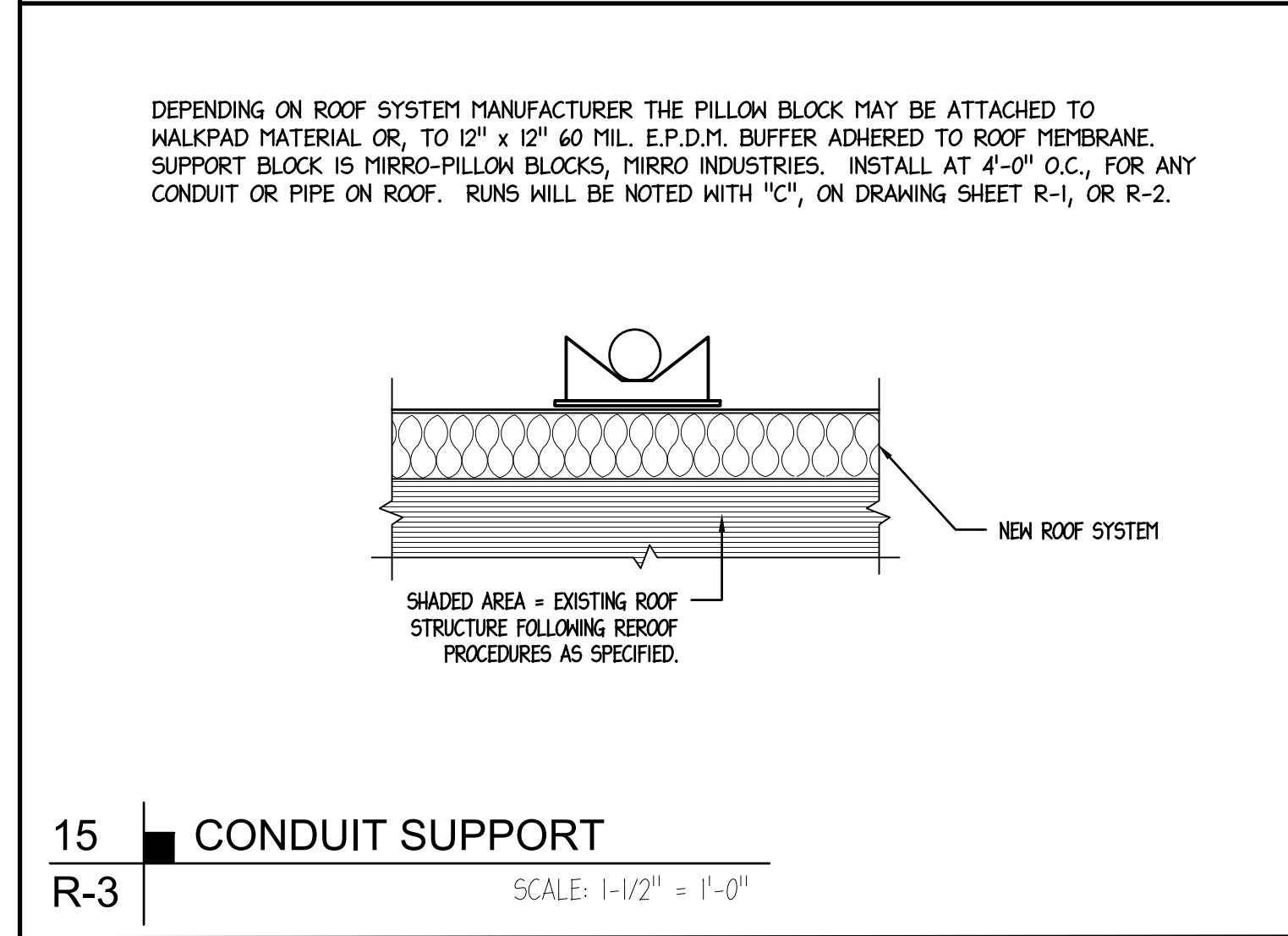
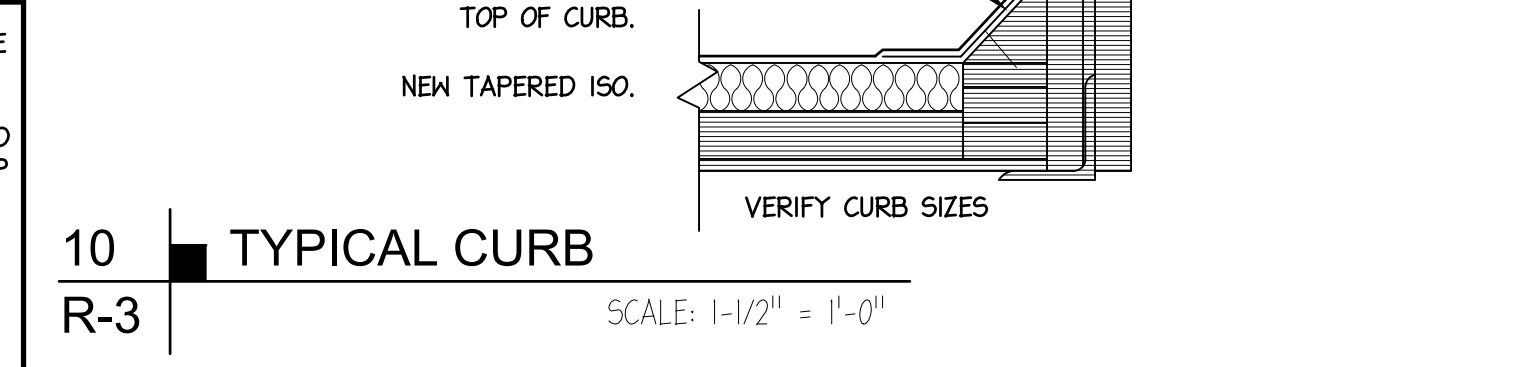
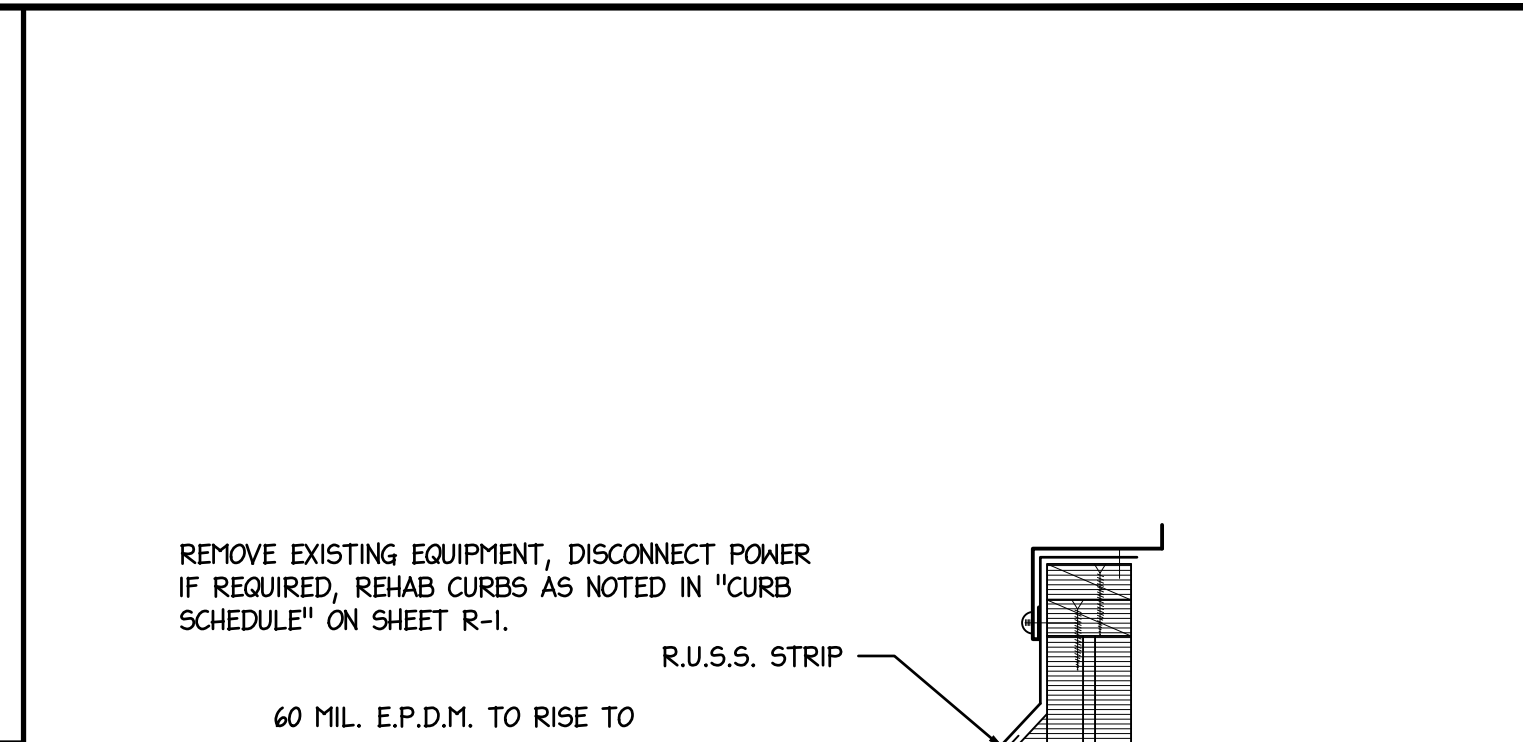
7 WALL FLASHING  
R-3 SCALE: 1-1/2" = 1'-0"



8 WALL FLASHING  
R-3 SCALE: 1-1/2" = 1'-0"



9 GUTTER DETAIL  
R-3 SCALE: 1-1/2" = 1'-0"



1702 W. College Ave.  
Suite E  
Normal, IL 61761-2793  
p: 309.452.1271  
f: 309.454.8049  
middleton@middletonassociates.net  
middletonassociates.net

**MIDDLETON ASSOCIATES, INC ARCHITECTS**

THE CONTRACTOR SHALL VERIFY CONDITIONS & DIMENSIONS ON THE JOB. INFORMATION SHOWN ON ANY PART OF THE DRAWINGS SHALL APPLY TO SIMILAR CONDITIONS AT OTHER LOCATIONS IN THE WORK UNLESS SET FORTH OTHERWISE.

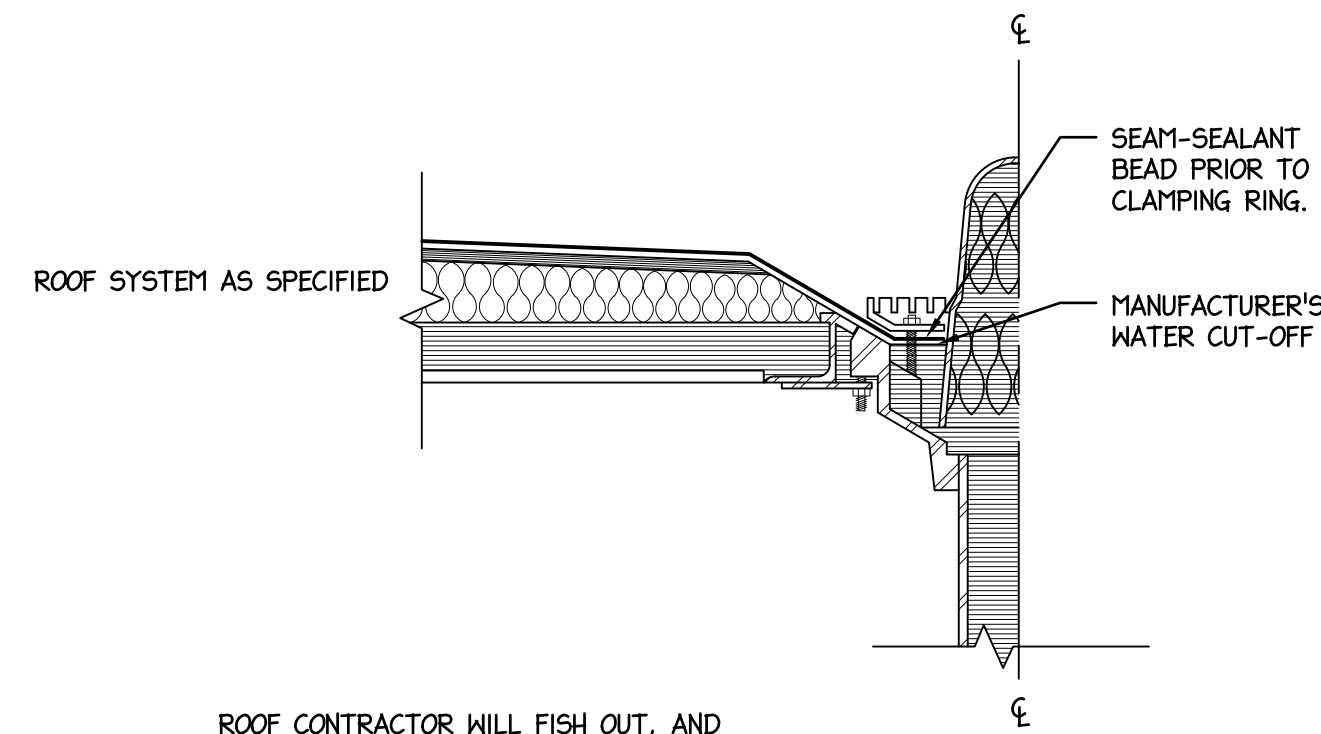
**PRAIRIE CENTRAL PRIMARY WEST PARTIAL REROOF**  
700 S. Division Street - Chenoa, IL 61726  
for Prairie Central CUSD No. 8  
605 N. 7th Street  
Fairbury, IL 61739

**DETAILS**

NO.	DATE	REVISIONS	REMARKS

PROJECT NO. 24990319  
ISSUE DATE MARCH 24, 2020  
SHEET R-3.0 OF 6 SHEETS

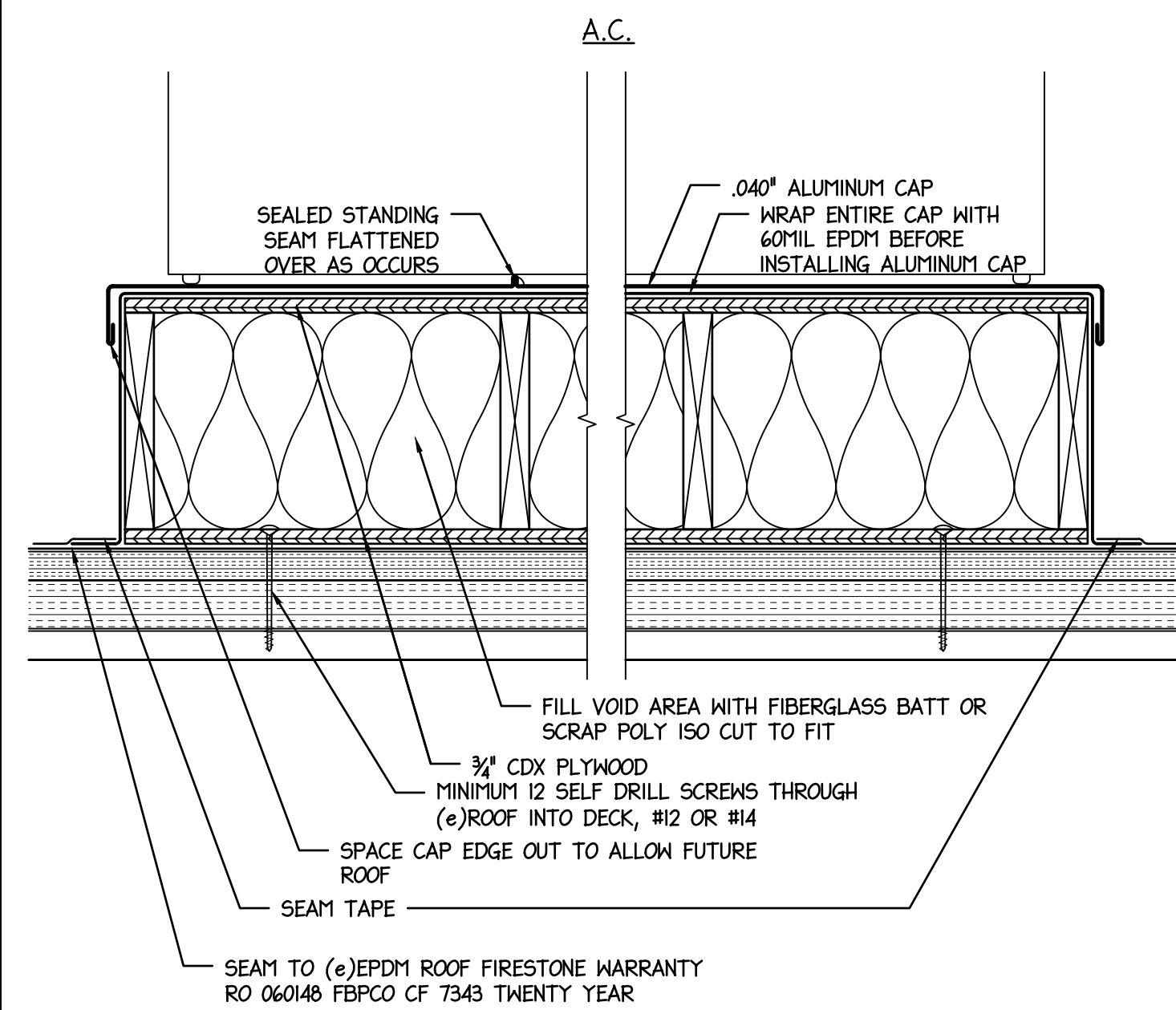
CLEAN EXISTING DRAIN PARTS, REPLACE ANY MISSING AND BROKEN PARTS FOR REUSE. INSTALL ROOF SYSTEM PER MANUFACTURER'S SPECIFICATIONS.



ROOF CONTRACTOR WILL FISH OUT, AND FLUSH WITH WATER ALL DRAINS FOLLOWING CONSTRUCTION.

**16** ■ EXISTING ROOF DRAIN

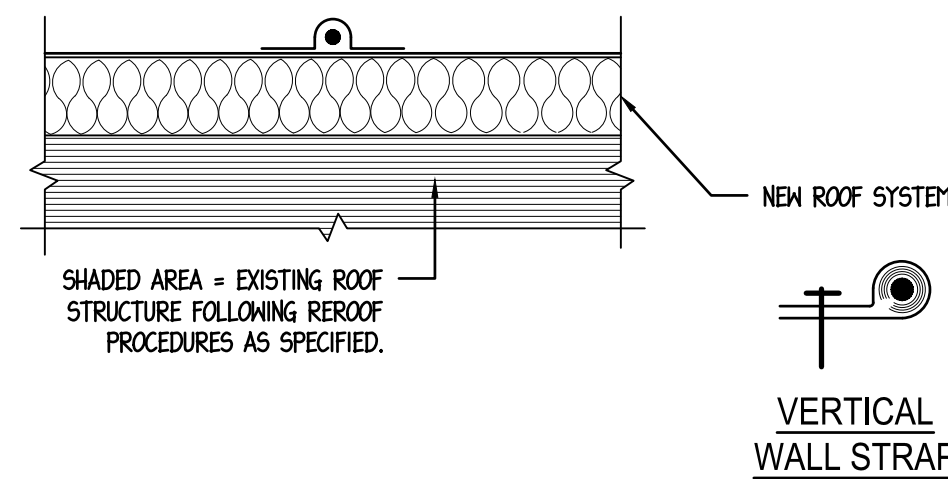
R-4 SCALE: 1-1/2" = 1'-0"



**17** ■ NEW AC BASE

R-4 SCALE: 1-1/2" = 1'-0"

AT ALL COAXIAL CABLES LAYING ON ROOF, CONTRACTOR IS TO VERIFY IN-USE, IF NO LONGER IN SERVICE-REMOVE. IF IN-USE HANDLE WITH CARE THROUGHOUT PROJECT-PROTECT. CONTRACTOR IS TO INSTALL 3" WIDE BY 8" LONG ADHERED E.P.D.M. STRAP AT 4'-0" O.C. IN STRAIGHT LINE FASHION AT CABLE RUNS. PROVIDE NEW BUSHING TYPE WALL STRAPS AT 4'-0" O.C. WHERE CABLES ARE SWINGING.



**18** ■ COAXIAL CABLE STRAP

R-4 SCALE: 1-1/2" = 1'-0"

1702 W. College Ave.  
Suite E  
Normal, IL 61761-2793  
p: 309.452.1271  
middleton@middletonassociates.net  
middletonassociates.net

**MIDDLETON ASSOCIATES, INC ARCHITECTS**

THE CONTRACTOR SHALL VERIFY CONDITIONS & DIMENSIONS ON THE JOB. INFORMATION SHOWN ON ANY PART OF THE DRAWINGS SHALL APPLY TO SIMILAR CONDITIONS AT OTHER LOCATIONS IN THE WORK UNLESS SET FORTH OTHERWISE.

PRAIRIE CENTRAL PRIMARY WEST PARTIAL REROOF

700 S. Division Street - Chenoa, IL 61726  
for Prairie Central CUSD No. 8

605 N. 7th Street  
Fairbury, IL 61739

DETAILS

NO.	DATE	REVISIONS	REMARKS

PROJECT NO.  
24990319  
ISSUE DATE  
MARCH 24, 2020  
SHEET  
**R-4.0**  
OF 6 SHEETS