

# PRAIRIE CENTRAL HIGH SCHOOL 2020 PARTIAL RE-ROOF

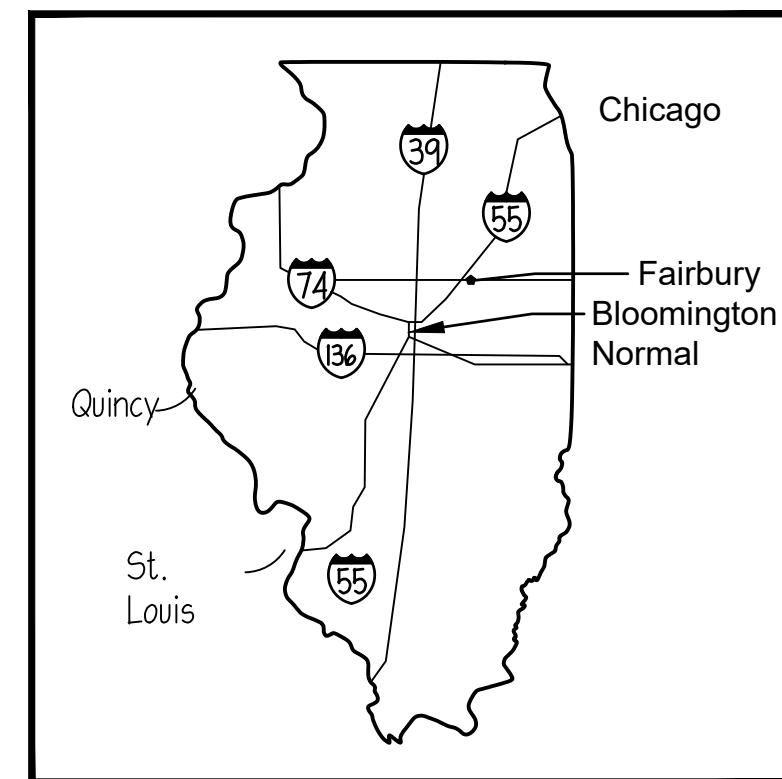
FOR  
Prairie Central C.U.S.D. No. 8

411 N 7th Street - Fairbury, IL 61739

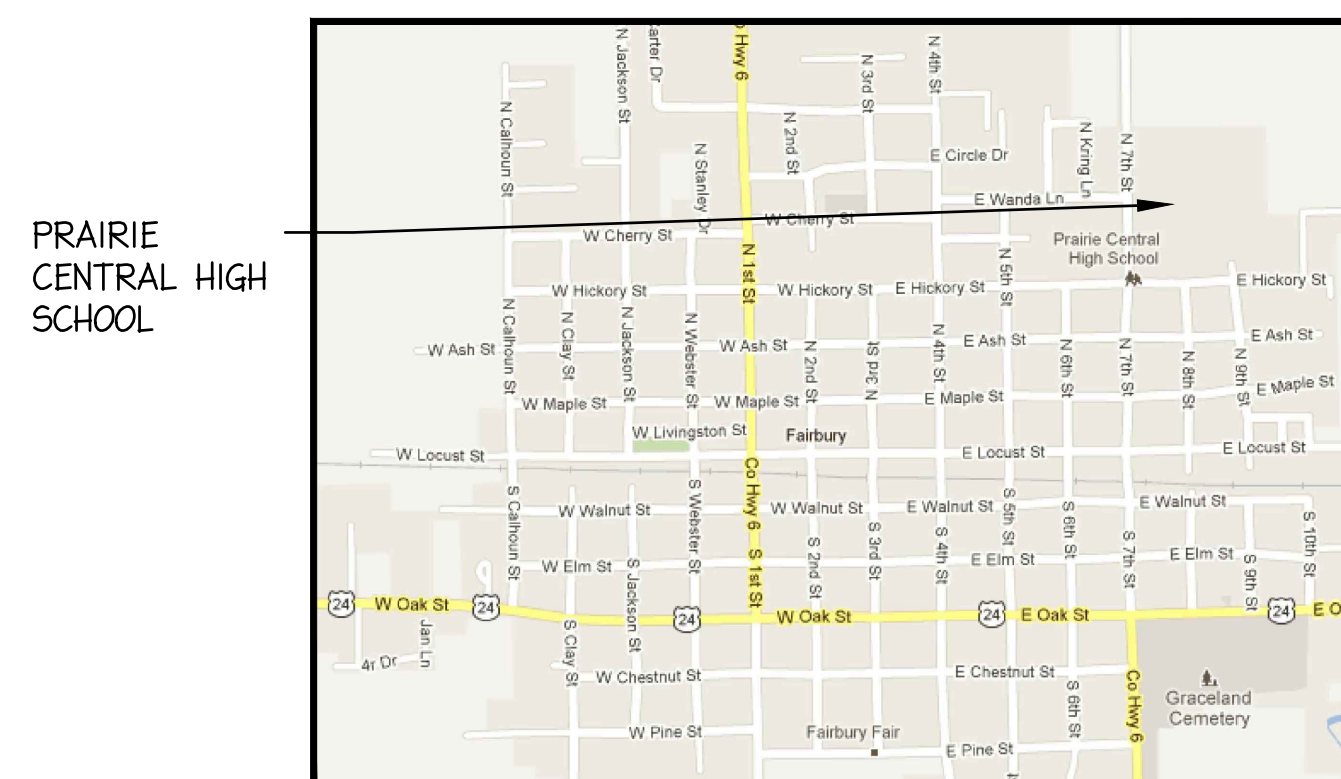
District Office Location : 605 N 7th Street - Fairbury, IL 61739



Illinois Counties Scale: Not to Scale



Illinois Highways Scale: Not to Scale



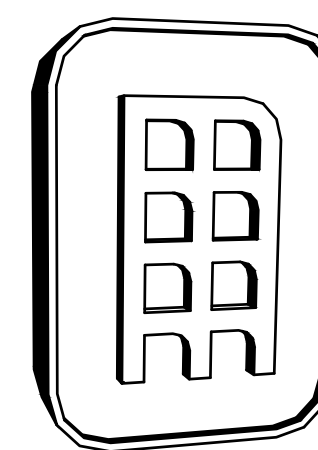
PRAIRIE CENTRAL HIGH SCHOOL



## MIDDLETON ASSOCIATES INCORPORATED ARCHITECTURAL SERVICES

1702 W. COLLEGE AVE.-STE 'E'  
PHONE (309) 452-1271  
http://www.middletonassociates.net

NORMAL, IL 61761-2793  
FAX (309) 454-8049  
middleton@middletonassociates.net



ARCHITECTURAL SYMBOL SCHEDULE	
MARK	IDENTIFICATION
	SPOT ELEVATION, (EL.), (ELEV.)
	ENLARGED DETAIL DETAIL NUMBER   TITLE SHEET LOCATION
	ENLARGED ELEVATION DIRECTION   ELEVATION LETTER A-2.0   SHEET LOCATION
	ENLARGED SECTION DIRECTION   SECTION NUMBER A-2.0   SHEET LOCATION
SCHEDULE OF ABBREVIATIONS	
A.F.F.	ABOVE FINISHED FLOOR
APPROX.	APPROXIMATELY
CL	CENTERLINE DATUM
BLK'G	BLOCKING
CONT.	CONTINUOUS
DEMO	SELECTIVE DEMOLITION & REPAIR
D.S.	DOWNSPOUT LOCATION
(E), EXIST	EXISTING
EQUIP.	EQUIPMENT, AS APPLIES
EXP. JT.	EXPANSION JOINT, AS APPLIES
GA., ga.	GAGE, GAUGE, AS APPLIES
G.C.	GENERAL PRIME CONTRACTOR WORK
J.	ROOF JACK - PIPING OR CONDUIT
MAX.	MAXIMUM ALLOWED SPACING
M.C.	MECHANICAL SUB-CONTRACTOR
MIN.	MINIMUM SPACING ALLOWED
N.T.S.	NOT TO SCALE
O.C.	ON CENTER
SIM.	SIMILAR
SPECS.	REFER TO SPECIFICATION BOOKLET (SPEC.)
ST. ST.	STAINLESS STEEL, (S.S.)
TYP.	TYPICAL
U.N.O.	UNLESS NOTED OTHERWISE
● O-1	LOCATION OF A.C.M. TEST, SEE SPEC. 02083
R.C.	PRIME CONTRACTOR - SINGLE CONTRACT
G.C.	GENERAL SUB-CONTRACTOR
E.C.	ELECTRICAL SUB-CONTRACTOR
M.C.	MECHANICAL SUB-CONTRACTOR
MARK	COMPOSITION
	CONCRETE BLOCK
	BRICK
	CAST-IN-PLACE CONCRETE
	INSULATION (AS APPLIES)
	DIMENSIONAL LUMBER AS NOTED
	PLYWOOD AS NOTED
	NEW STUD / GYPSUM WALL BOARD WALL

SHEET INDEX	
T-1.0	TITLE SHEET - JOB INFORMATION
C-1.0	SITE PLAN
G-1.0	PHOTO GALLERY
R-1.0	ROOF PLAN AREA A AND DETAILS
R-2.0	ROOF PLAN AREA B AND DETAILS
R-3.0	ROOF PLAN AREA A DETAILS
ME-1.0	MECHANICAL - ELECTRICAL PLAN

I HEREBY CERTIFY THAT THE PLANS AND SPECIFICATIONS DATED MARCH 24, 2020 - PRAIRIE CENTRAL HIGH SCHOOL PARTIAL REROOF, FOR PRAIRIE CENTRAL CUSD NO. 8, 605 N 7TH STREET, FAIRBURY, IL 61739 & SUPERINTENDENTS' OFFICE, 605 N 7TH STREET, FAIRBURY, IL 61739 WERE PREPARED WITH MY SUPERVISION USING INTERNATIONAL BUILDING CODE 2015 & ILLINOIS ADMINISTRATIVE CODE 185 AND TO THE BEST OF MY KNOWLEDGE, COMPLY WITH THE HEALTH/LIFE SAFETY CODE AS PREPARED AND PROVIDED BY THE STATE OF ILLINOIS BOARD OF EDUCATION. I HAVE PREPARED, OR CAUSED TO BE PREPARED UNDER MY DIRECT SUPERVISION, THE ATTACHED PLANS AND SPECIFICATIONS AND STATE THAT TO THE BEST OF MY KNOWLEDGE AND BELIEF AND TO THE EXTENT OF MY CONTRACTUAL OBLIGATION, THEY COMPLY WITH THE ENVIRONMENTAL BARRIERS ACT (ILL. REV. STAT. 1985, CH. III-1/2, PARS. 3711 ET. SEQ. AS AMENDED) AND THE ILLINOIS ACCESSIBILITY CODE, 71 ILLINOIS ADMINISTRATIVE CODE 400.

*Russell W. Middleton*  
RUSSELL W. MIDDLETON 001-007820 EXPIRES: 30 NOVEMBER, 2020  
MIDDLETON ASSOCIATES INCORPORATED



PROJECT NOTE: ALL NEW MATERIALS EMPLOYED IN THE WORK SHALL BE ASBESTOS FREE AND PCB FREE. CONTRACTOR SHALL SUBMIT CERTIFICATION OF SUSPECT ITEMS UPON REQUEST, AND FOR THE OVERALL PROJECT AT THE CONCLUSION OF THE WORK.

1702 W. College Ave.  
Suite E  
Normal, IL 61761-2793  
p: 309.452.1271  
f: 309.454.8049  
middletonassociates.net

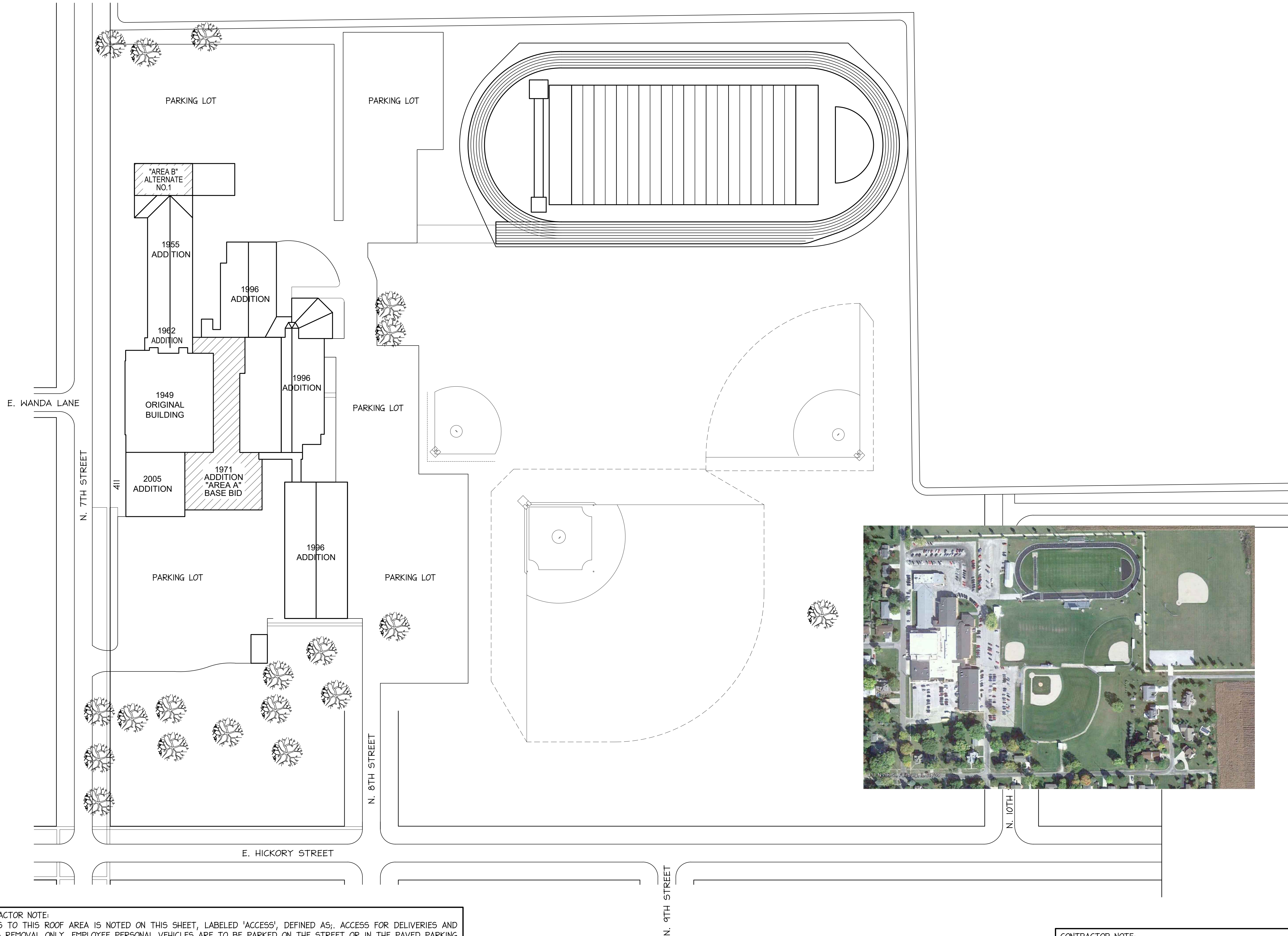


PRAIRIE CENTRAL HIGH SCHOOL PARTIAL REROOF  
411 N. 7th Street - Fairbury, IL 61739  
for Prairie Central CUSD No. 8  
605 N. 7th Street  
Fairbury, IL 61739

TITLE SHEET

NO.	DATE	REVISIONS	REMARKS

PROJECT NO. 24980319  
ISSUE DATE MARCH 24, 2020  
SHEET T-1.0  
OF 7 SHEETS



CONTRACTOR NOTE:  
 ACCESS TO THIS ROOF AREA IS NOTED ON THIS SHEET, LABELED 'ACCESS', DEFINED AS: ACCESS FOR DELIVERIES AND DEBRIS REMOVAL ONLY. EMPLOYEE PERSONAL VEHICLES ARE TO BE PARKED ON THE STREET OR IN THE PAVED PARKING LOT. ALL MANHOLE COVERS ARE TO BE CORDED OFF FOR OWNER'S PROTECTION OF UNDERGROUND UTILITIES (01530). ALL CONCRETE PAVEMENT IN STAGING AREA IS TO BE COVERED WITH 3/4" PLYWOOD, SEE LAWN RESTORATION 01550.  
 STATE STATUTE:  
 NO TOBACCO, DRUGS, WEAPONS, FIREARMS ON PUBLIC OWNED PROPERTY (NO EXCEPTIONS).



**SITE PLAN**  
 SCALE: 1" = 60'  
 105 - Prairie Central HS Partial Reroof.dwg  
 0 30' 90' 180'

CONTRACTOR NOTE:  
 ALL REMOVED ALUMINUM ASSEMBLIES TO BE DISPOSED OF BY THE CONTRACTOR. IT IS THE INTENT THAT UNDAMAGED NON-FERROUS METALS CAN BE REUSED, DAMAGED TO BE REPLACED WITH LIKE MATERIAL OF SIMILAR OR HEAVIER GAUGE.

1702 W. College Ave.  
 Suite E  
 Normal, IL 61761-2793  
 p: 309.452.1271  
 f: 309.454.8049  
 middletonassociates.net



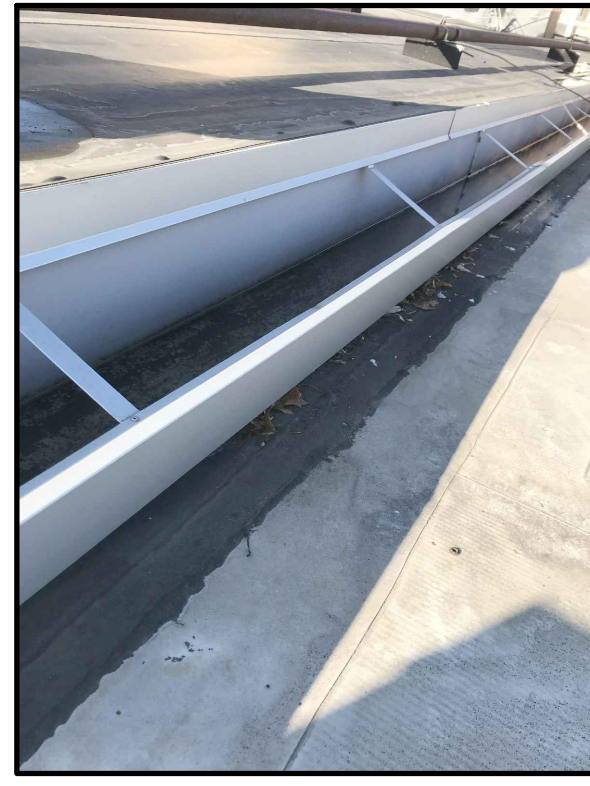
**PRAIRIE CENTRAL HIGH SCHOOL PARTIAL REROOF**  
 411 N. 7th Street - Fairbury, IL 61739  
**for Prairie Central CUSD No. 8**  
 605 N. 7th Street  
 Fairbury, IL 61739

**SITE PLAN**

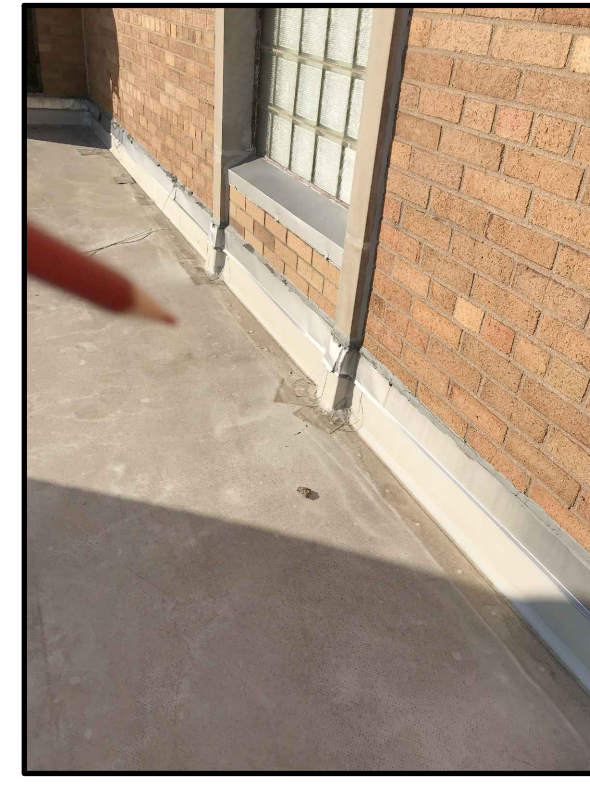
NO.	DATE	REVISIONS	REMARKS

PROJECT NO.  
24980319  
 ISSUE DATE  
MARCH 24, 2020  
 SHEET  
**C-1.0**  
 OF 7 SHEETS

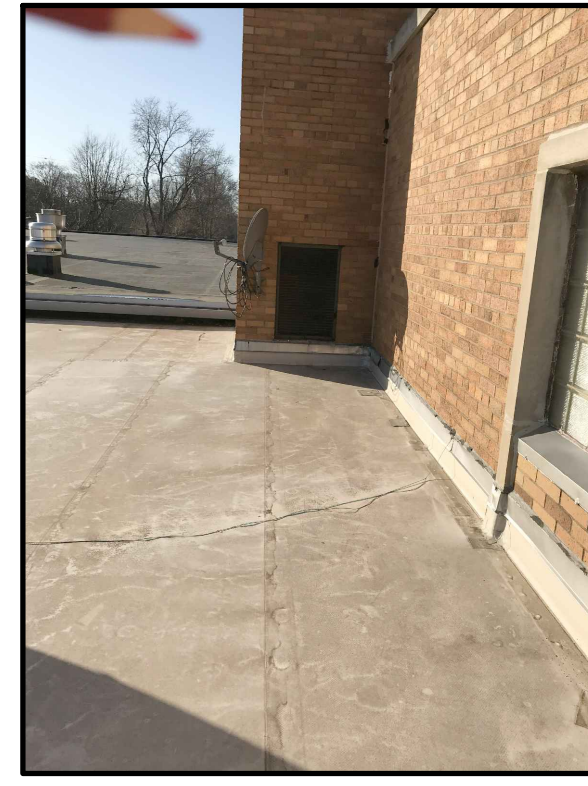
PRAIRIE CENTRAL CUSD NO.8  
PRAIRIE CENTRAL HIGH SCHOOL 1972 ADDITION  
PHOTO GALLERY



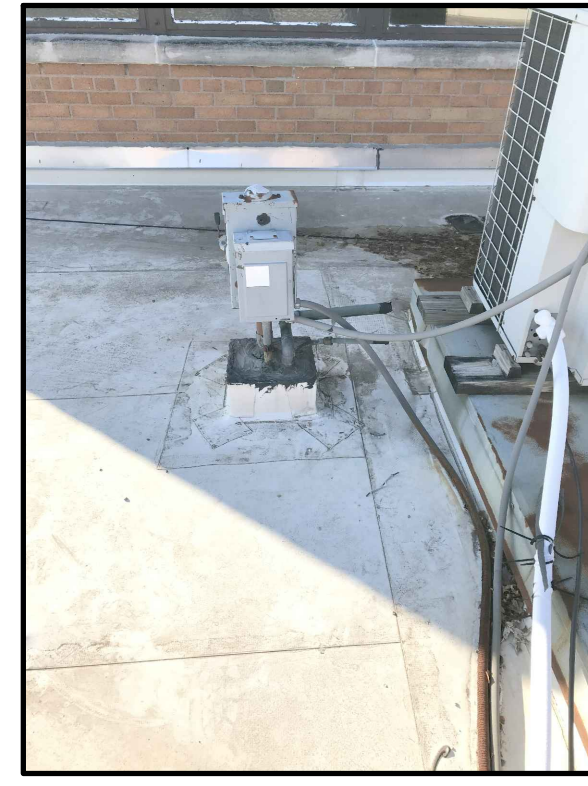
PCHS 1972 ADDITION ROOF PHOTO A



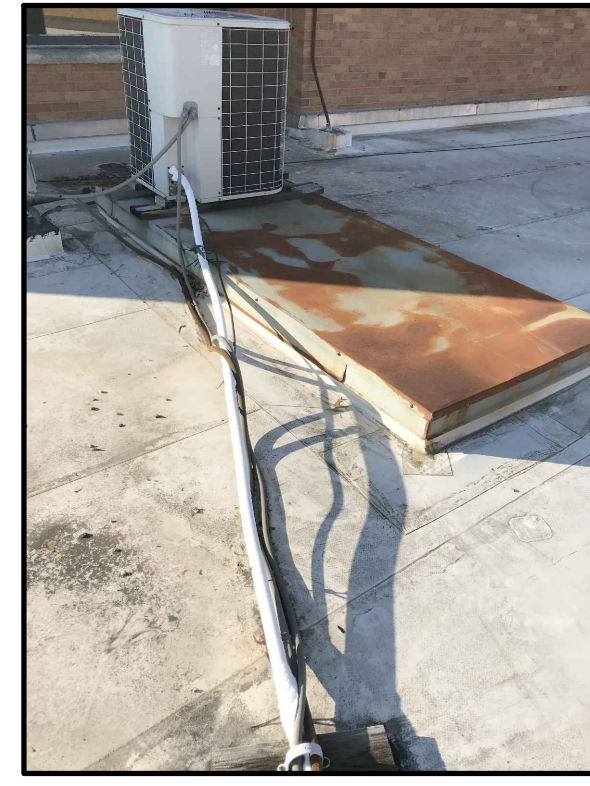
PCHS 1972 ADDITION ROOF PHOTO B



PCHS 1972 ADDITION ROOF PHOTO C



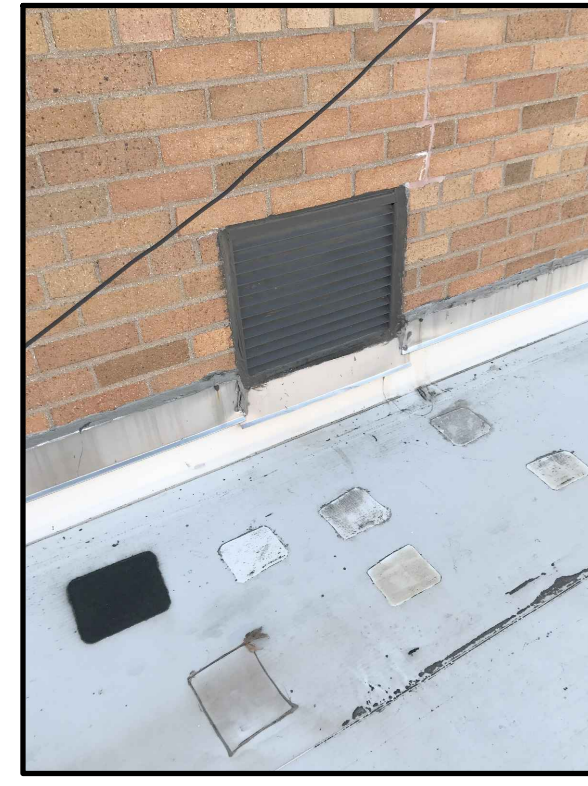
PCHS 1972 ADDITION ROOF PHOTO D



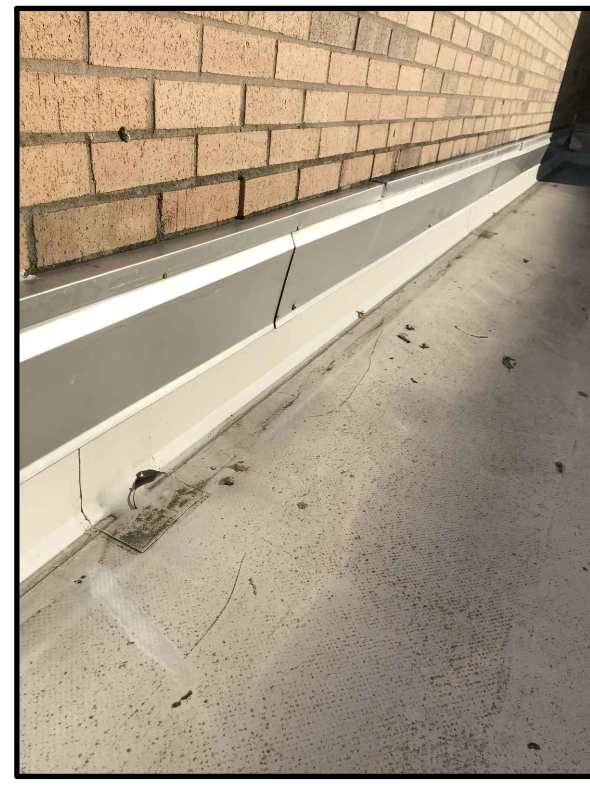
PCHS 1972 ADDITION ROOF PHOTO E



PCHS 1972 ADDITION ROOF PHOTO F



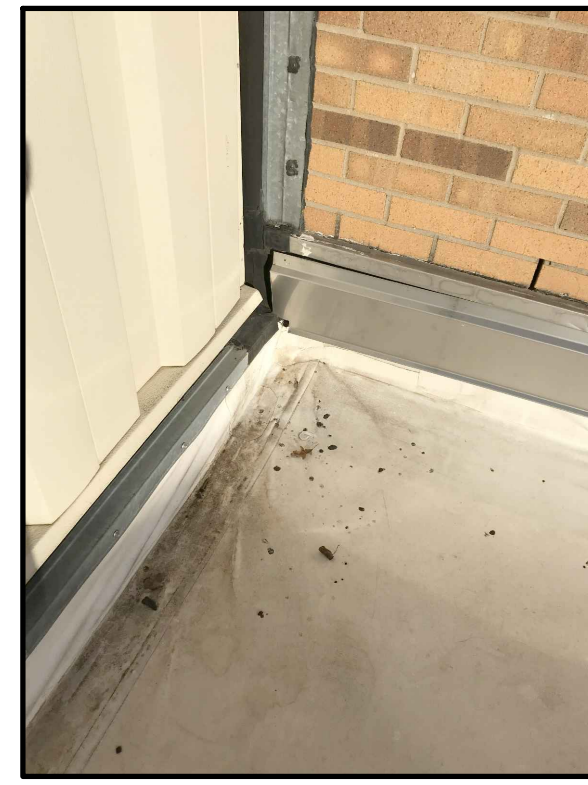
PCHS 1972 ADDITION ROOF PHOTO G



PCHS 1972 ADDITION ROOF PHOTO H



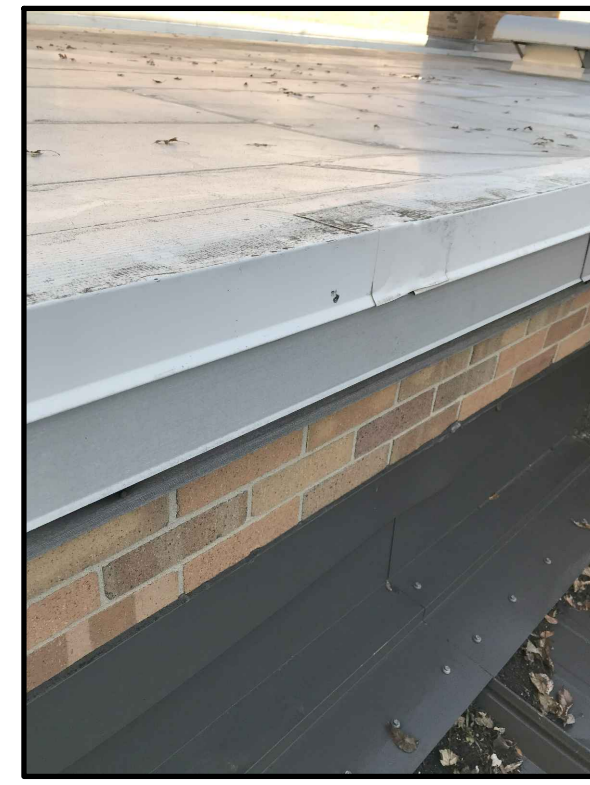
PCHS 1972 ADDITION ROOF PHOTO I



PCHS 1972 ADDITION ROOF PHOTO J



PCHS 1972 ADDITION ROOF PHOTO K



PCHS 1972 ADDITION ROOF PHOTO L



PCHS 1972 ADDITION ROOF PHOTO M

PRAIRIE CENTRAL CUSD NO.8  
PRAIRIE CENTRAL DISTRICT OFFICE NORTH ROOF  
ALTERNATE NO.1HS  
PHOTO GALLERY



PC DISTRICT OFFICE NORTH ROOF PHOTO A



PC DISTRICT OFFICE NORTH ROOF PHOTO B



PC DISTRICT OFFICE NORTH ROOF PHOTO C



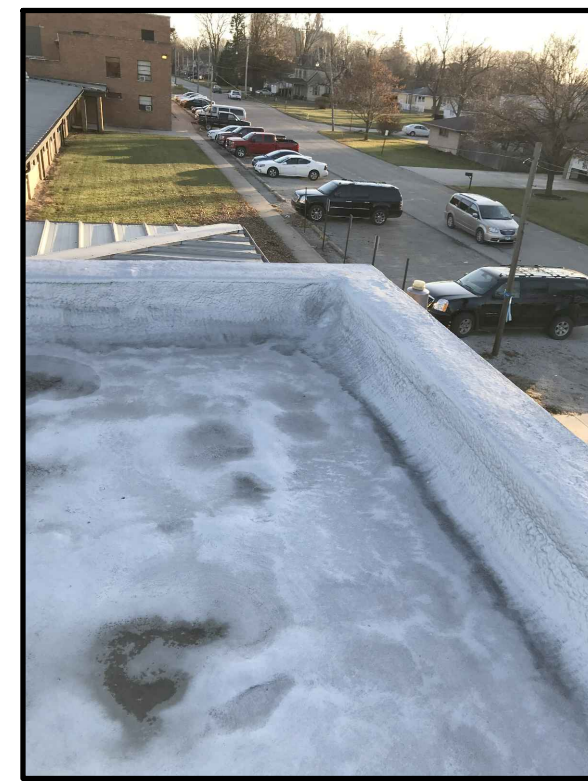
PC DISTRICT OFFICE NORTH ROOF PHOTO D



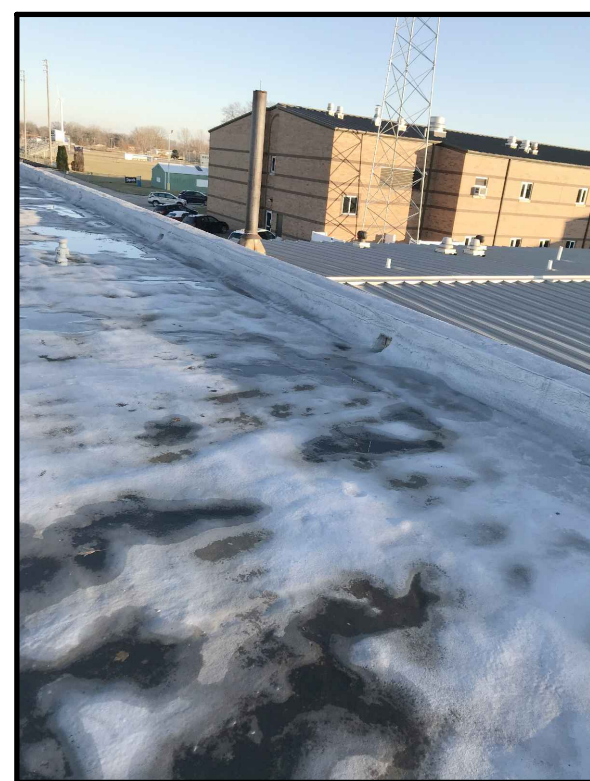
PC DISTRICT OFFICE NORTH ROOF PHOTO E



PC DISTRICT OFFICE NORTH ROOF PHOTO F



PC DISTRICT OFFICE NORTH ROOF PHOTO G



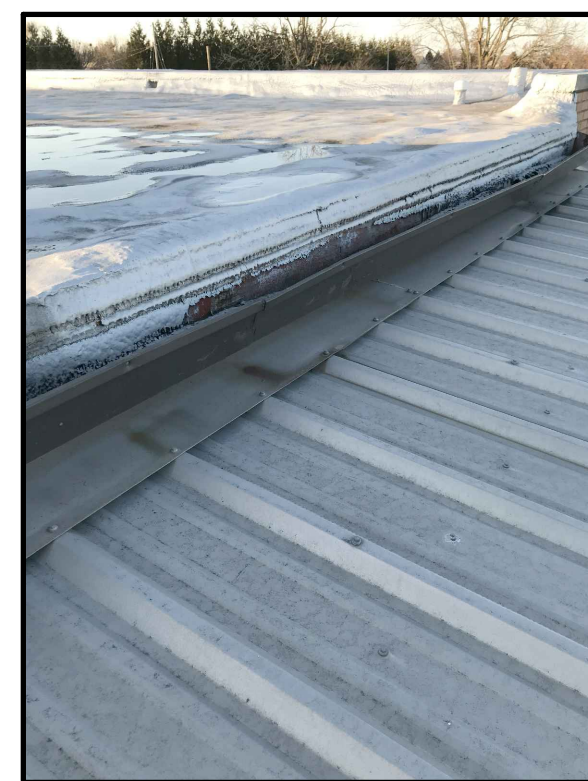
PC DISTRICT OFFICE NORTH ROOF PHOTO H



PC DISTRICT OFFICE NORTH ROOF PHOTO I



PC DISTRICT OFFICE NORTH ROOF PHOTO J



PC DISTRICT OFFICE NORTH ROOF PHOTO K

1702 W. College Ave.  
Suite E  
Normal, IL 61761-2793  
p: 309.452.1271  
f: 309.454.8049  
middletonassociates.net

**MIDDLETON ASSOCIATES, INC ARCHITECTS**

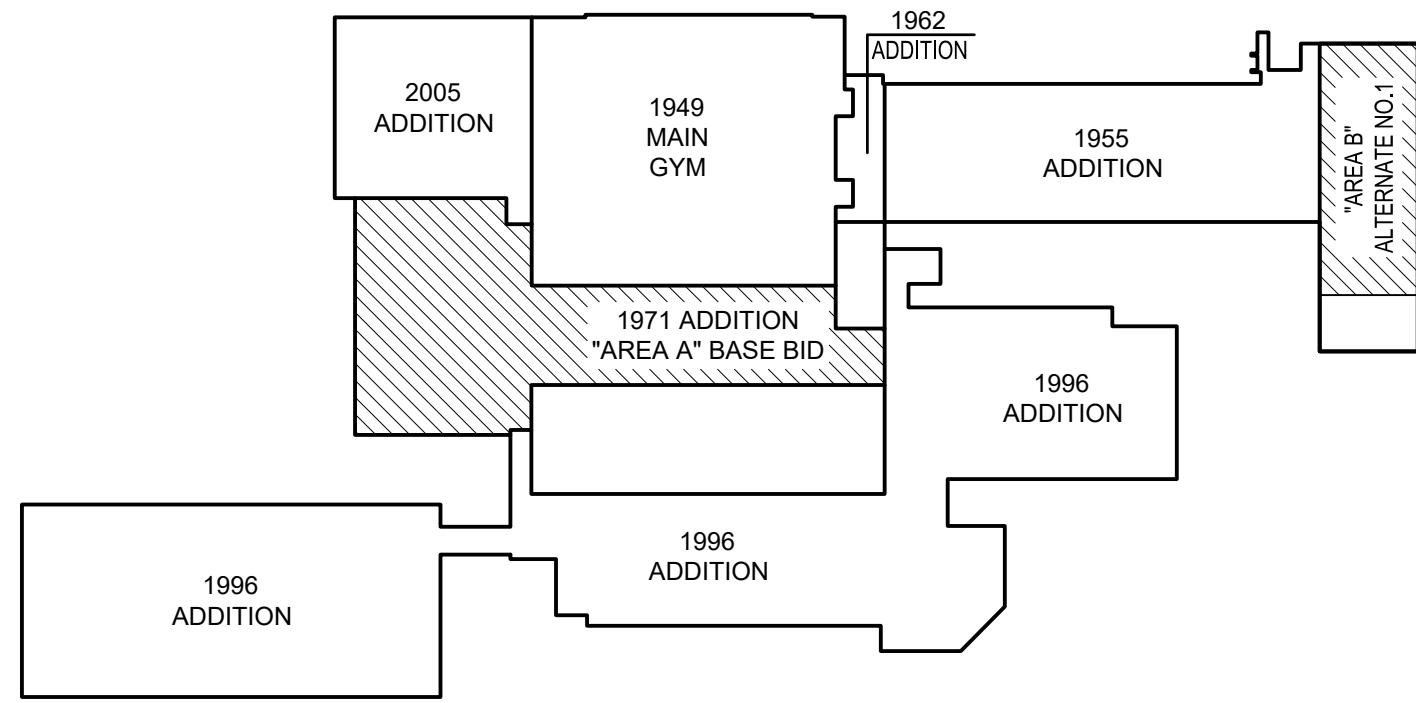
THE CONTRACTOR SHALL VERIFY CONDITIONS & DIMENSIONS ON THE JOB. INFORMATION SHOWN ON ANY PART OF THE DRAWINGS SHALL APPLY TO SIMILAR CONDITIONS AT OTHER LOCATIONS IN THE WORK UNLESS SET FORTH OTHERWISE

PRAIRIE CENTRAL HIGH SCHOOL PARTIAL REROOF  
411 N. 7th Street - Fairbury, IL 61739  
for Prairie Central CUSD No. 8  
605 N. 7th Street  
Fairbury, IL 61739

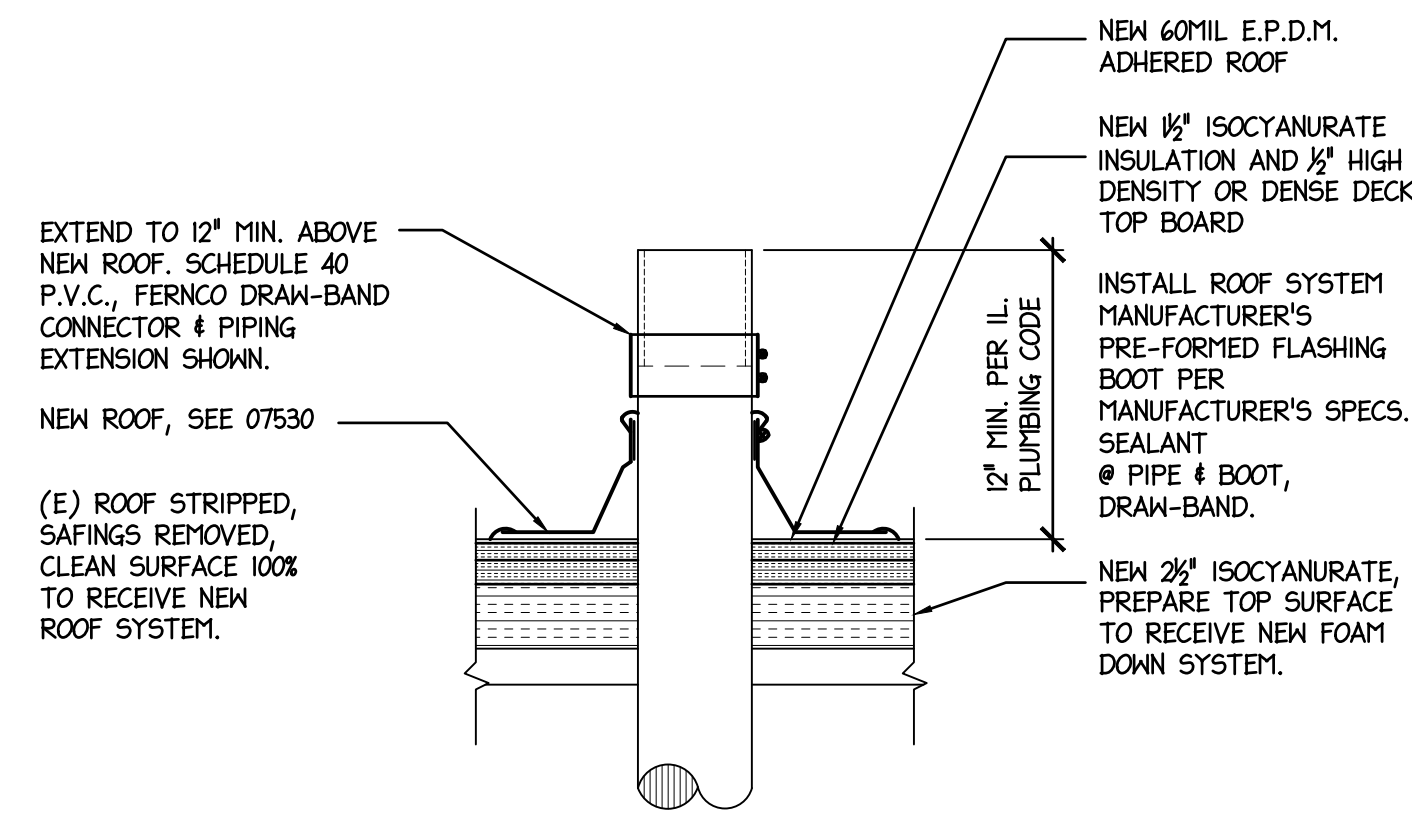
PHOTO GALLERY

NO.	DATE	REMARKS

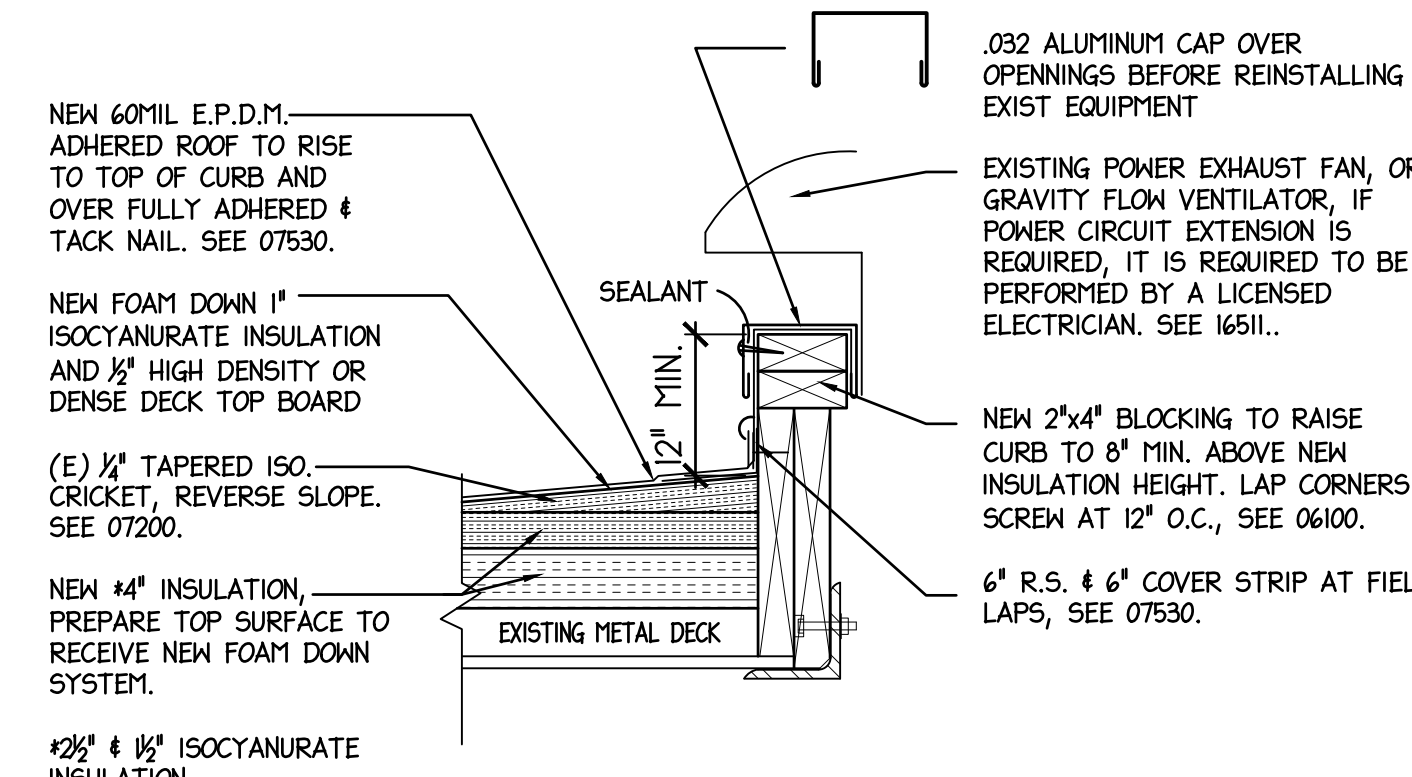
PROJECT NO.  
24980319  
ISSUE DATE  
MARCH 24, 2020  
SHEET  
**G-1.0**  
OF 7 SHEETS



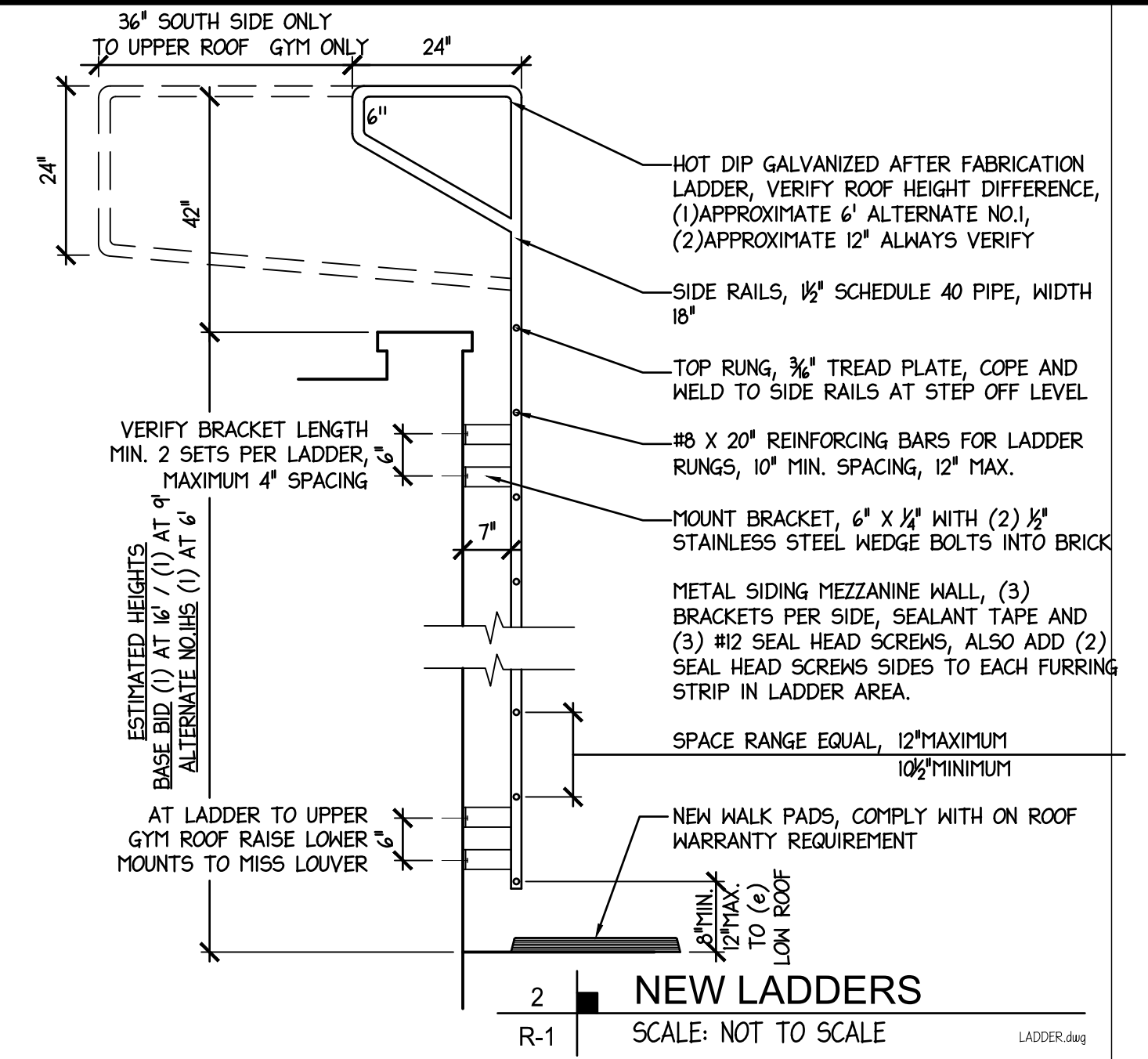
**KEY PLAN**  
SCALE: NOT TO SCALE



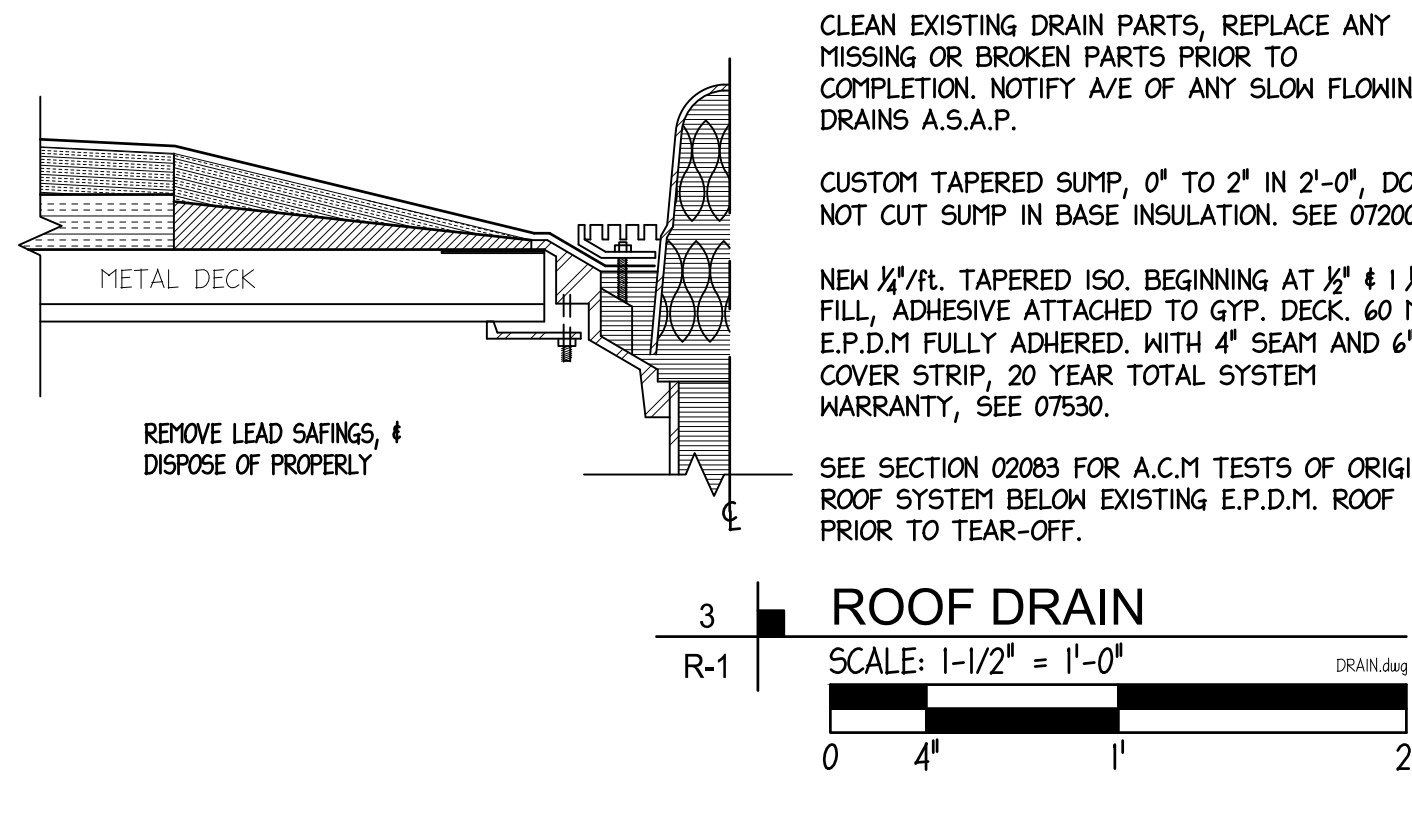
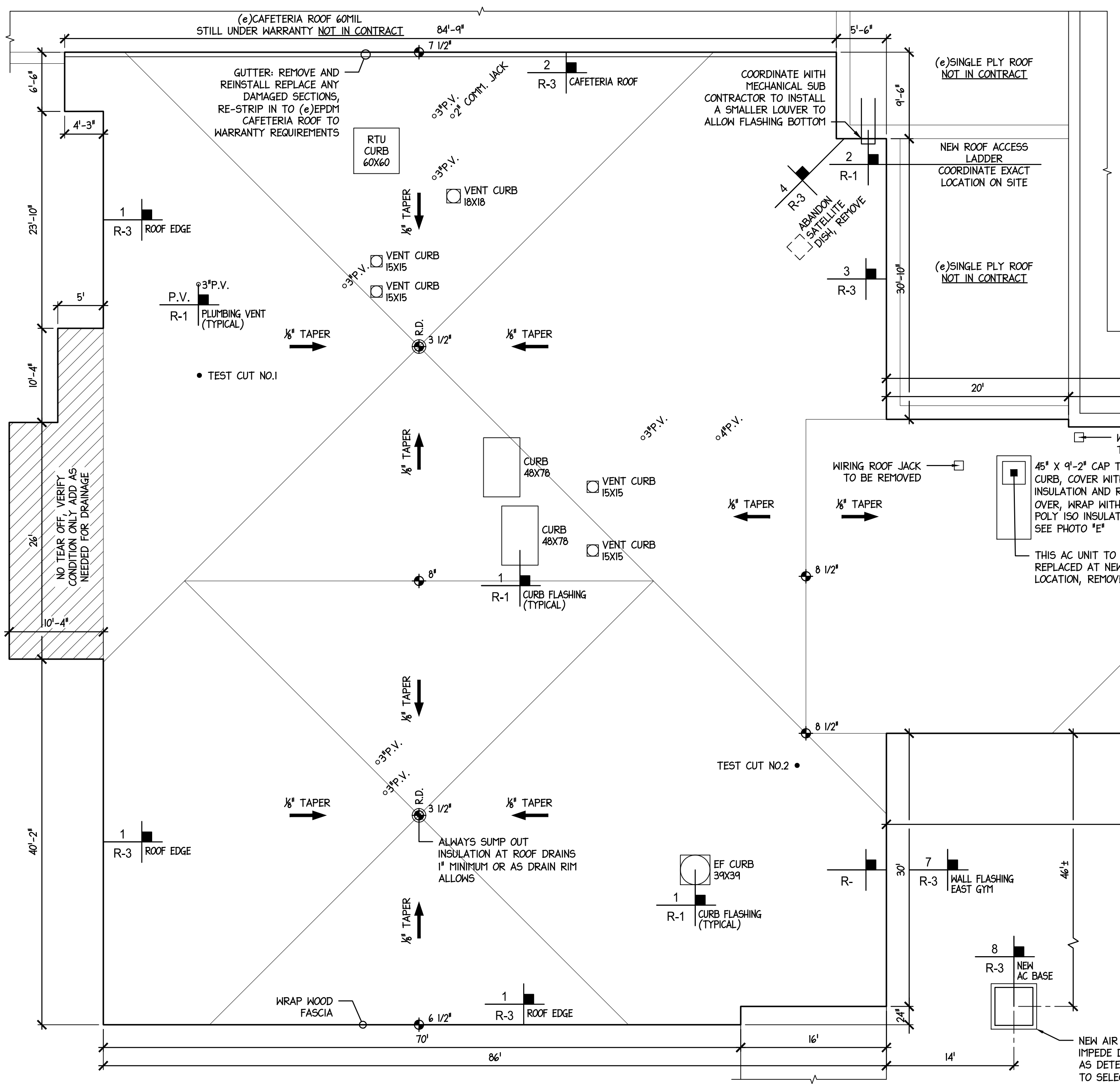
**PLUMBING VENT EXTENSION**  
SCALE: 1/2" = 1'-0"  
R-1



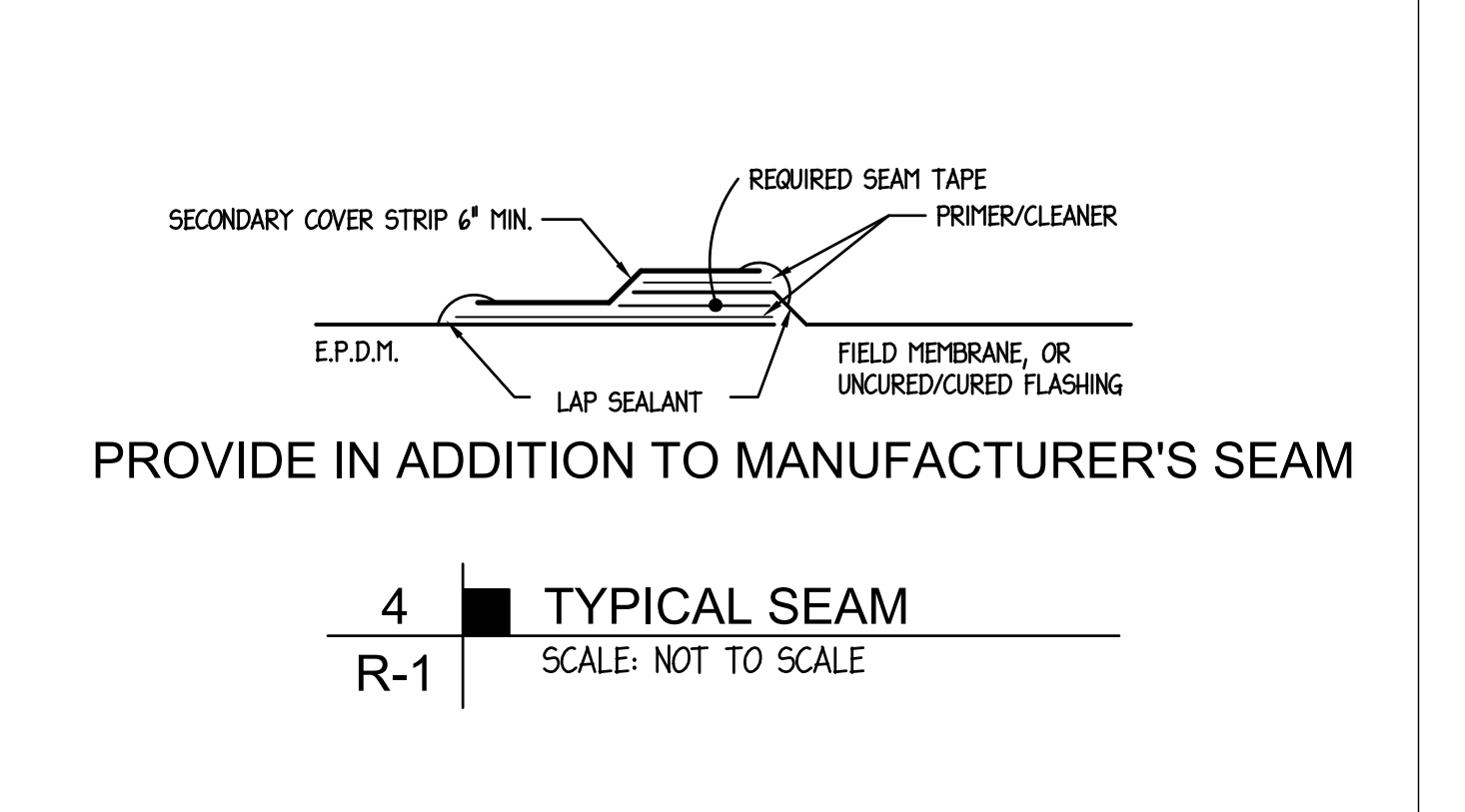
**CURB FLASHING**  
SCALE: 1-1/2" = 1'-0"  
R-1



**NEW LADDERS**  
SCALE: NOT TO SCALE  
R-1

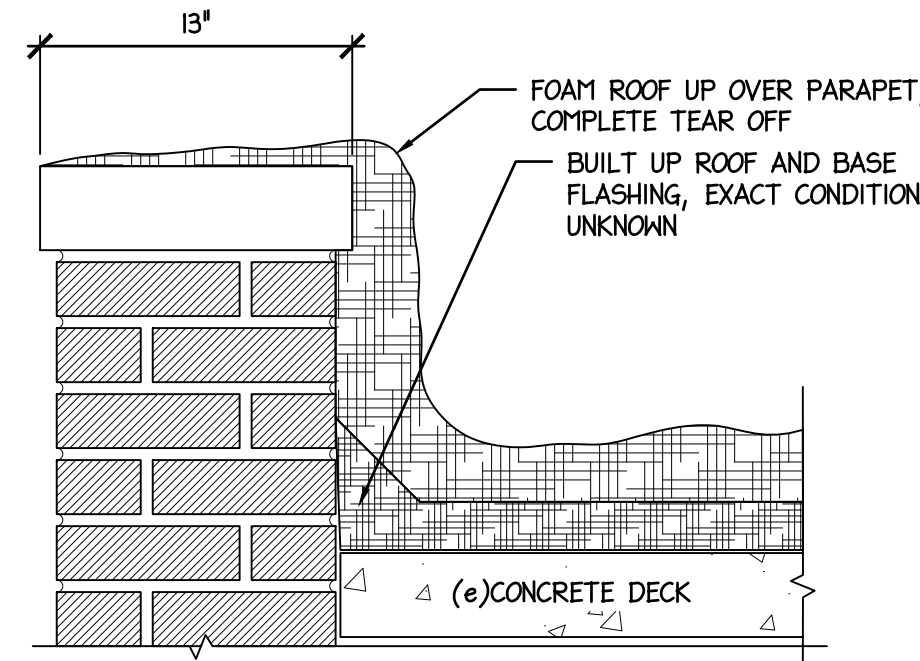


**ROOF DRAIN**  
SCALE: 1-1/2" = 1'-0"  
R-1

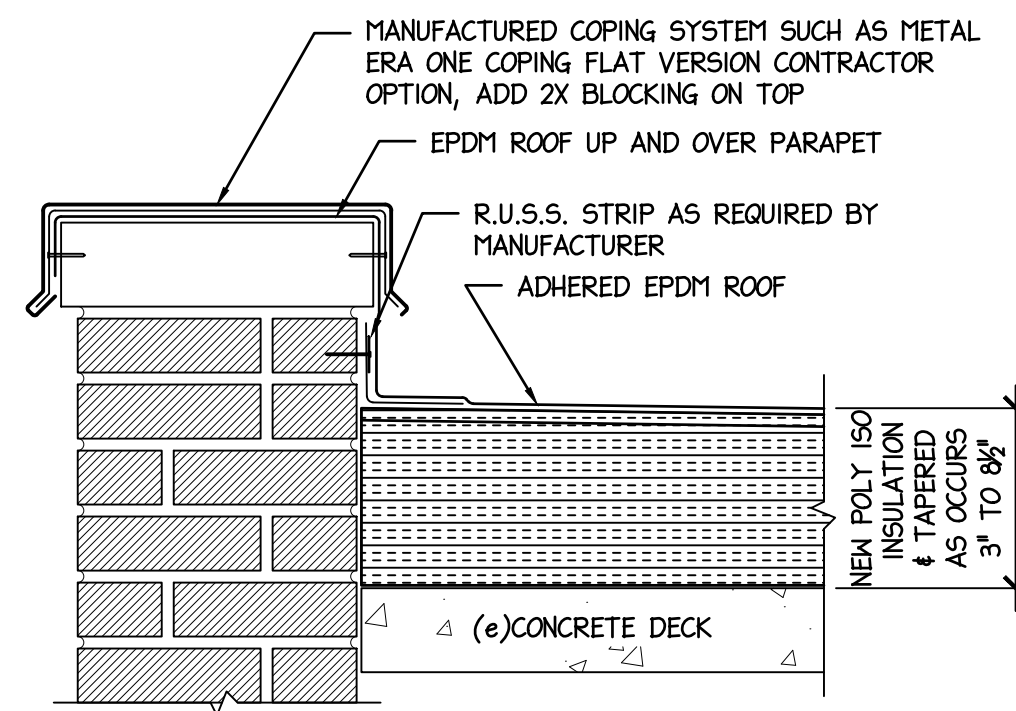


**TYPICAL SEAM**  
SCALE: NOT TO SCALE  
R-1

NO.	DATE	REVISIONS	REMARKS

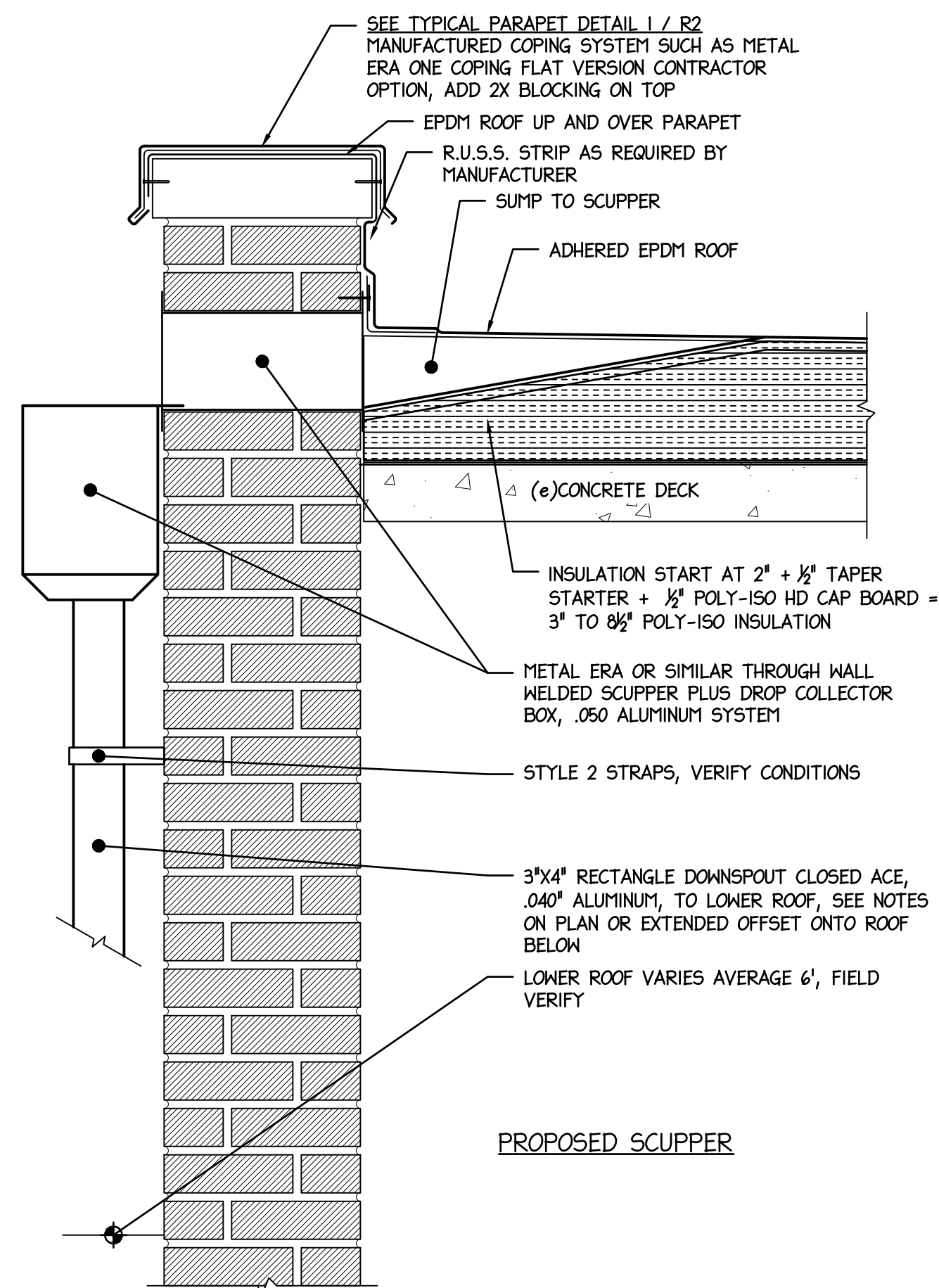


EXISTING CONDITION  
PARAPET  
SEE SHEET G-1.0  
PHOTO "A,G,H & J"



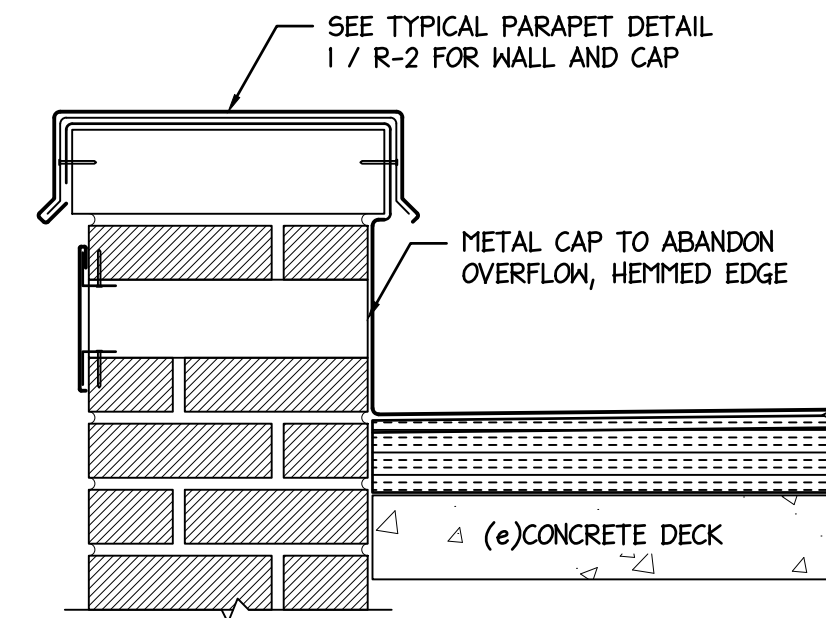
PROPOSED PARAPET

N1  
R-2  
PARAPET (TYPICAL)  
SCALE: 1-1/2" = 1'-0"  
PARAPET.dwg



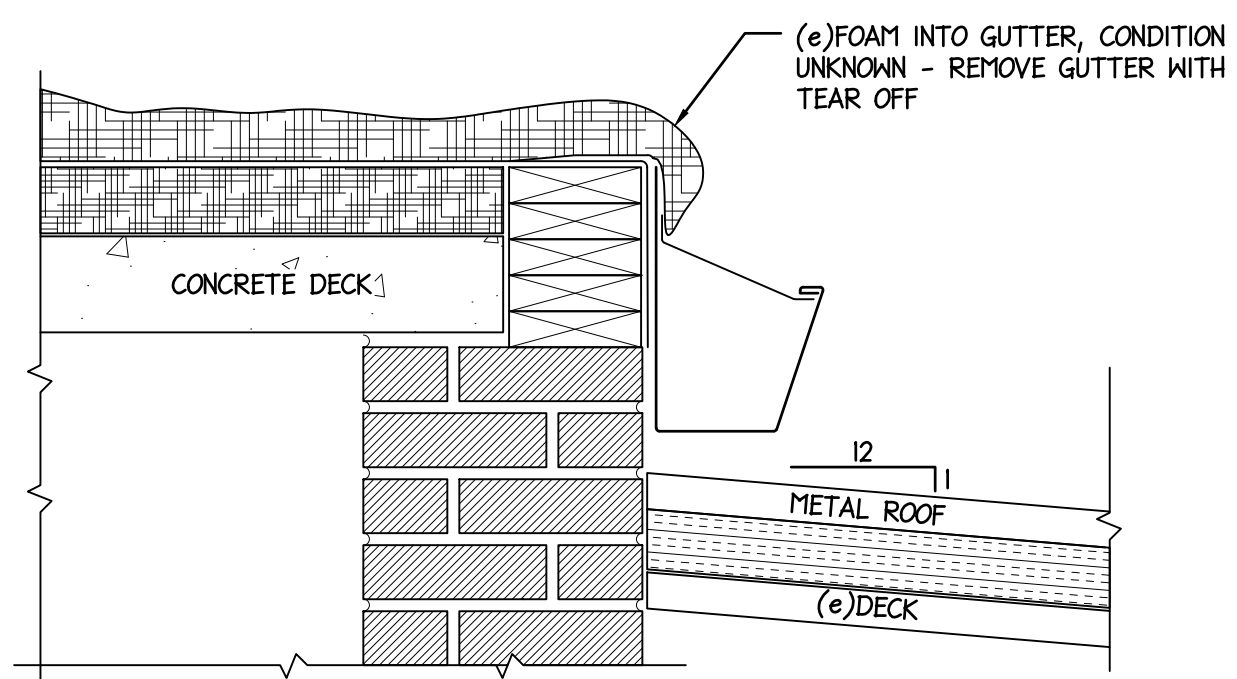
PROPOSED SCUPPER

N2  
R-2  
SCUPPERS  
SCALE: 1-1/2" = 1'-0"  
SCUPPER.dwg

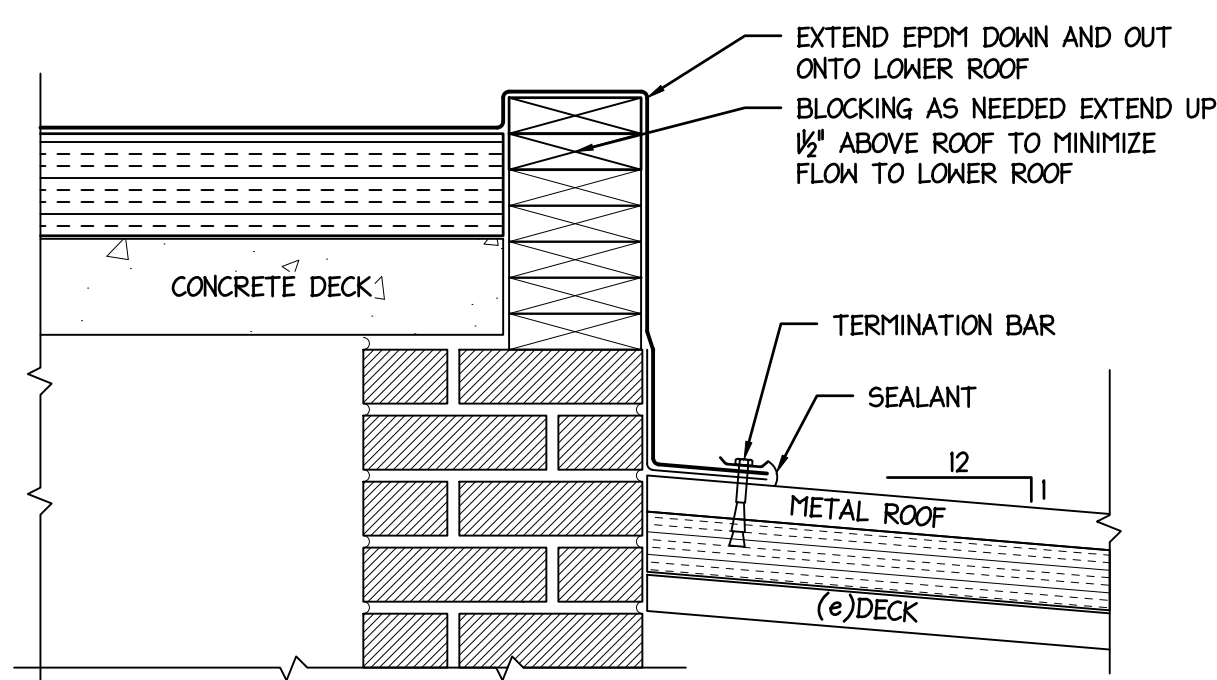


PROPOSED ABANDON  
OVERFLOW

N3  
R-2  
ABANDON OVERFLOW SCUPPERS  
SCALE: 1-1/2" = 1'-0"  
OVERFLOW.dwg

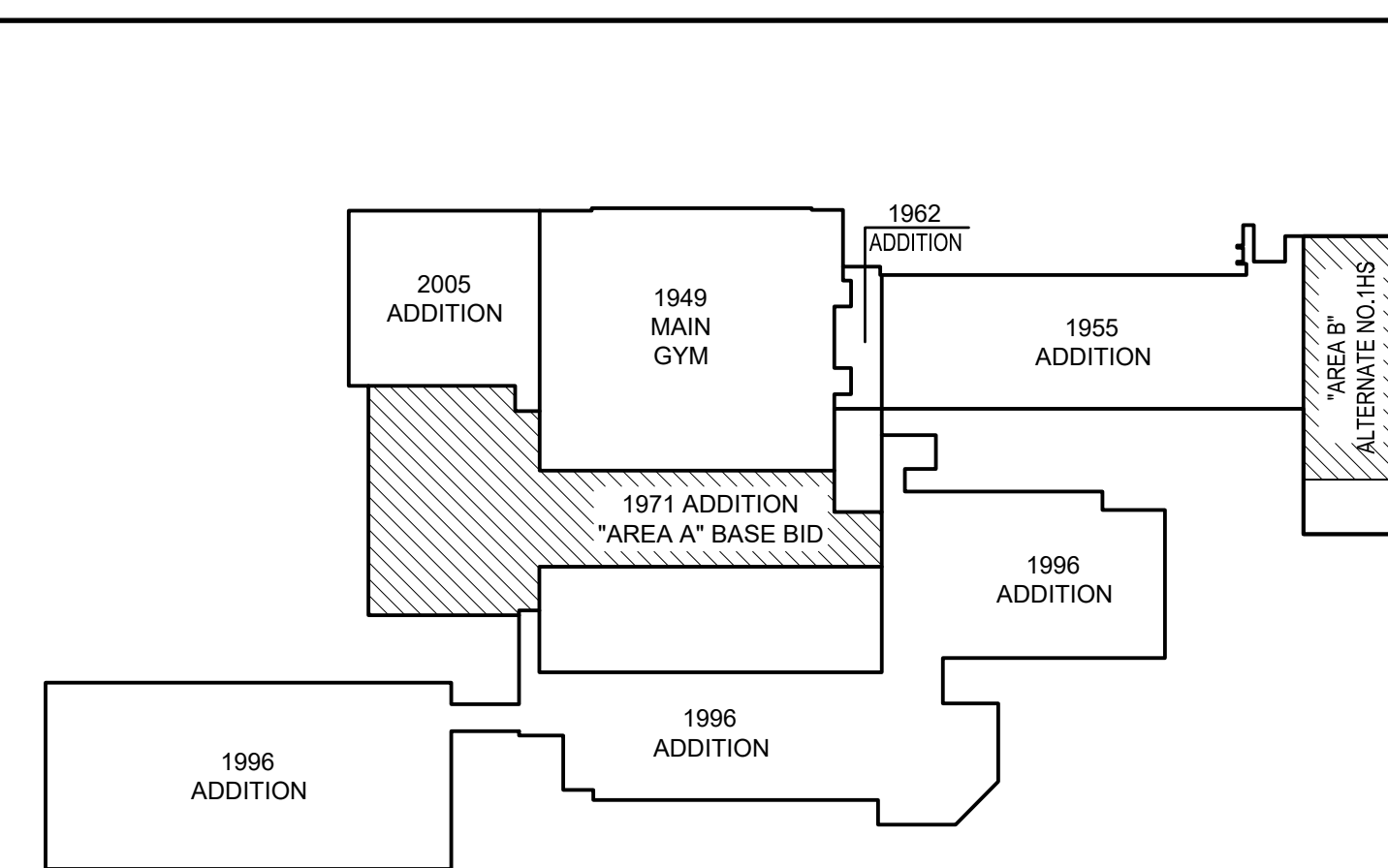


EXISTING CONDITION  
EAST ROOF EDGE  
SEE SHEET G-1.0  
PHOTO "B & K"

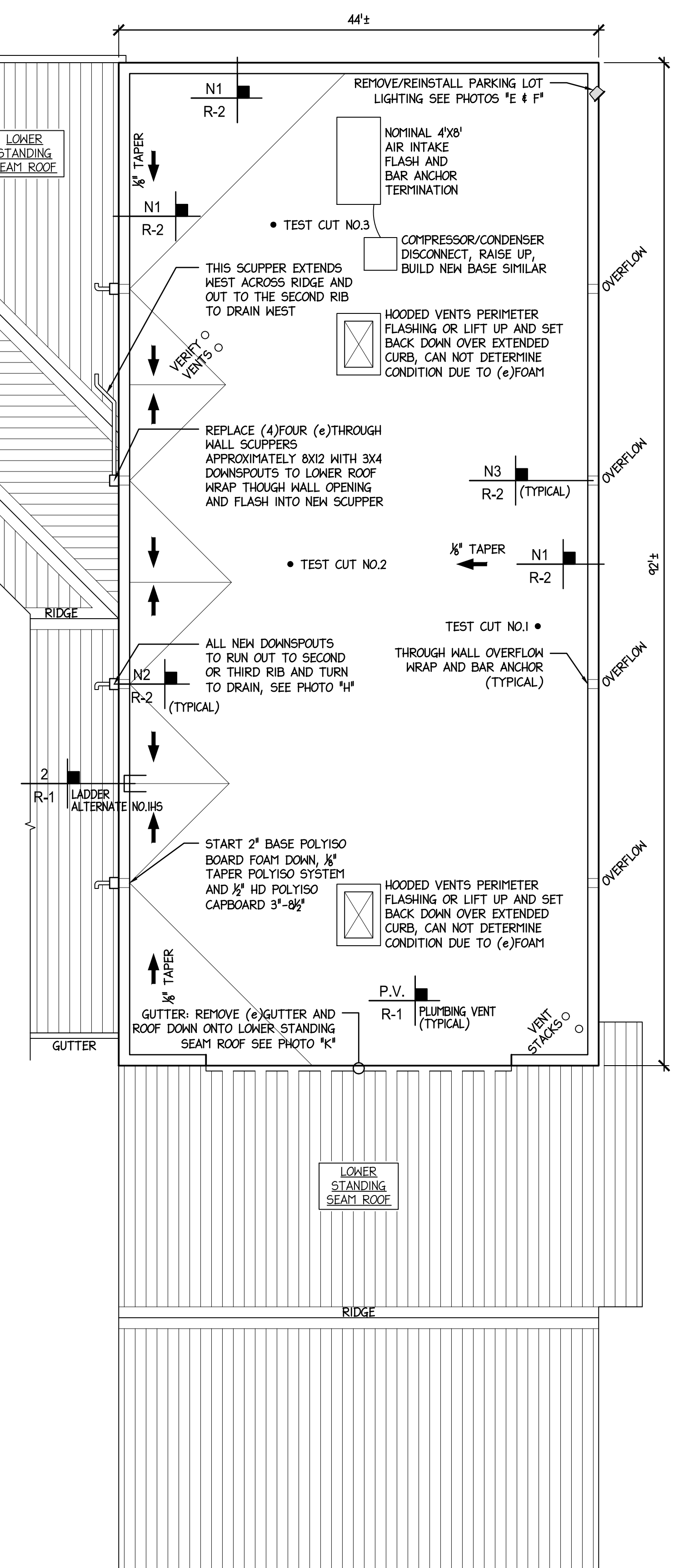


PROPOSED EAST ROOF  
EDGE

N4  
R-2  
EAST ROOF EDGE  
SCALE: 1-1/2" = 1'-0"  
EAST ROOF EDGE.dwg



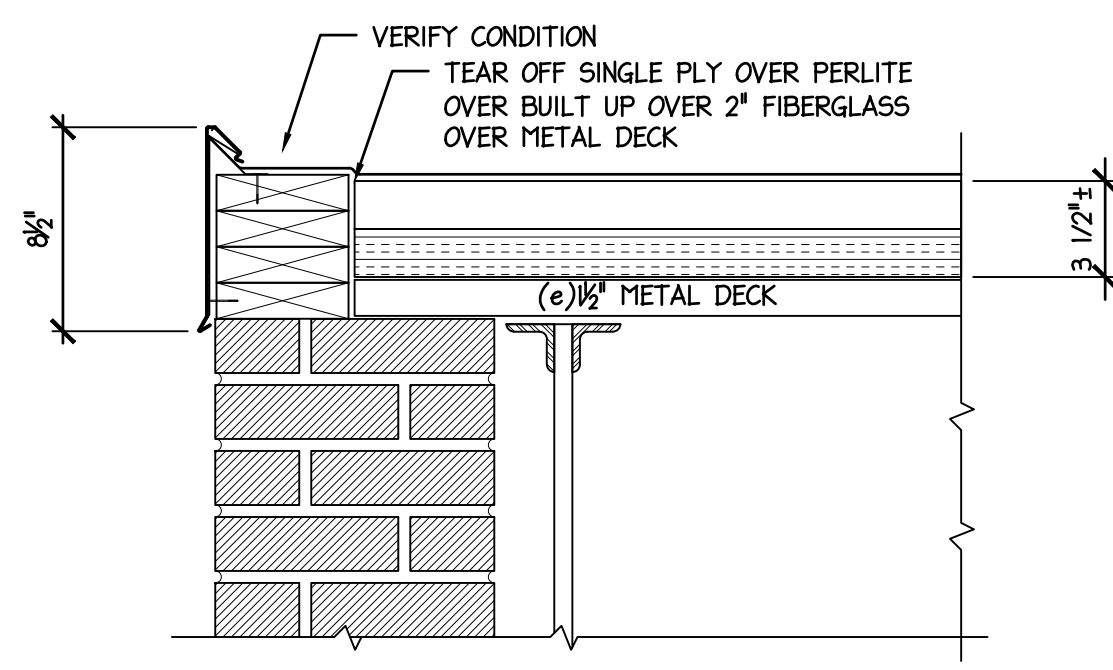
KEY PLAN  
SCALE: NOT TO SCALE



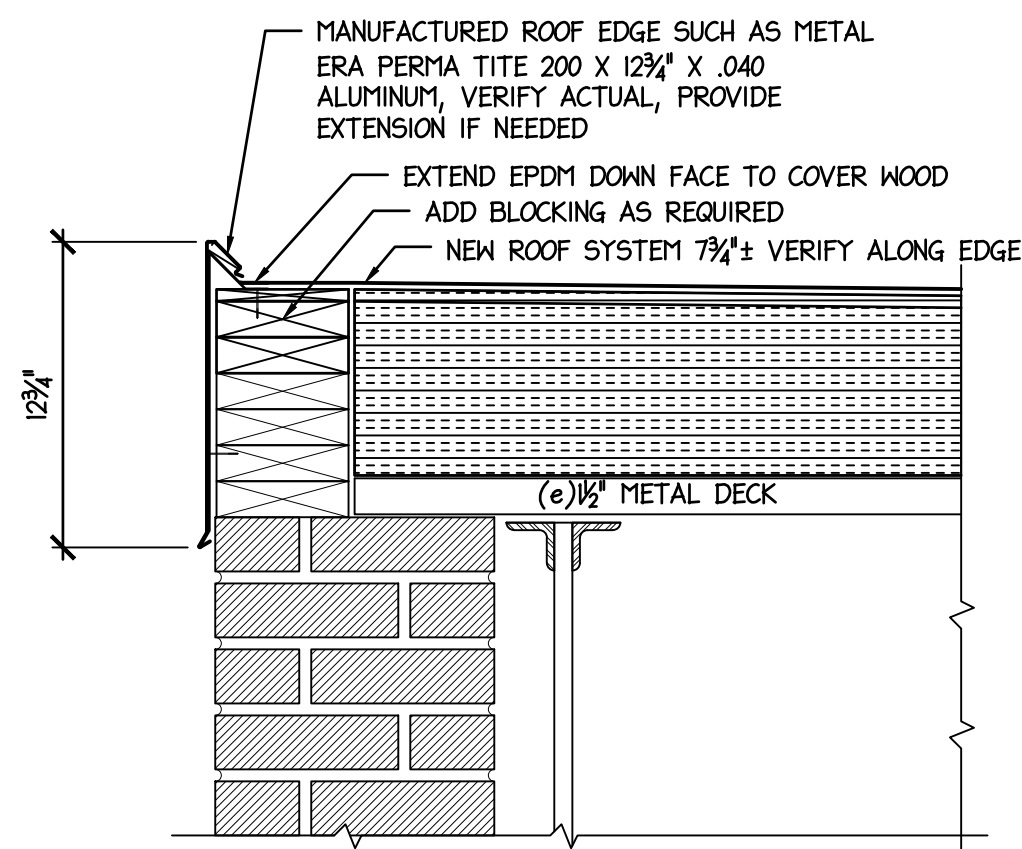
- ACH TEST CUT
- LOCATION NO.1  
COATED URETHANE SPRAY ON FOAM OVER BUILT UP ROOF THEN FOAM ROOF NOMINAL 4" ±2" FIELD VERIFY OVER CONCRETE
  - LOCATION NO.2  
COATED URETHANE SPRAY ON FOAM OVER BUILT UP ROOF THEN FOAM ROOF NOMINAL 4" ±2" FIELD VERIFY OVER CONCRETE
  - LOCATION NO.3  
COATED URETHANE SPRAY ON FOAM OVER BUILT UP ROOF THEN FOAM ROOF NOMINAL 4" ±2" FIELD VERIFY OVER CONCRETE

ALTERNATE NO.1HS  
ROOF PLAN - AREA B  
SCALE: 1/8" = 1'-0"  
25% R-2.dwg

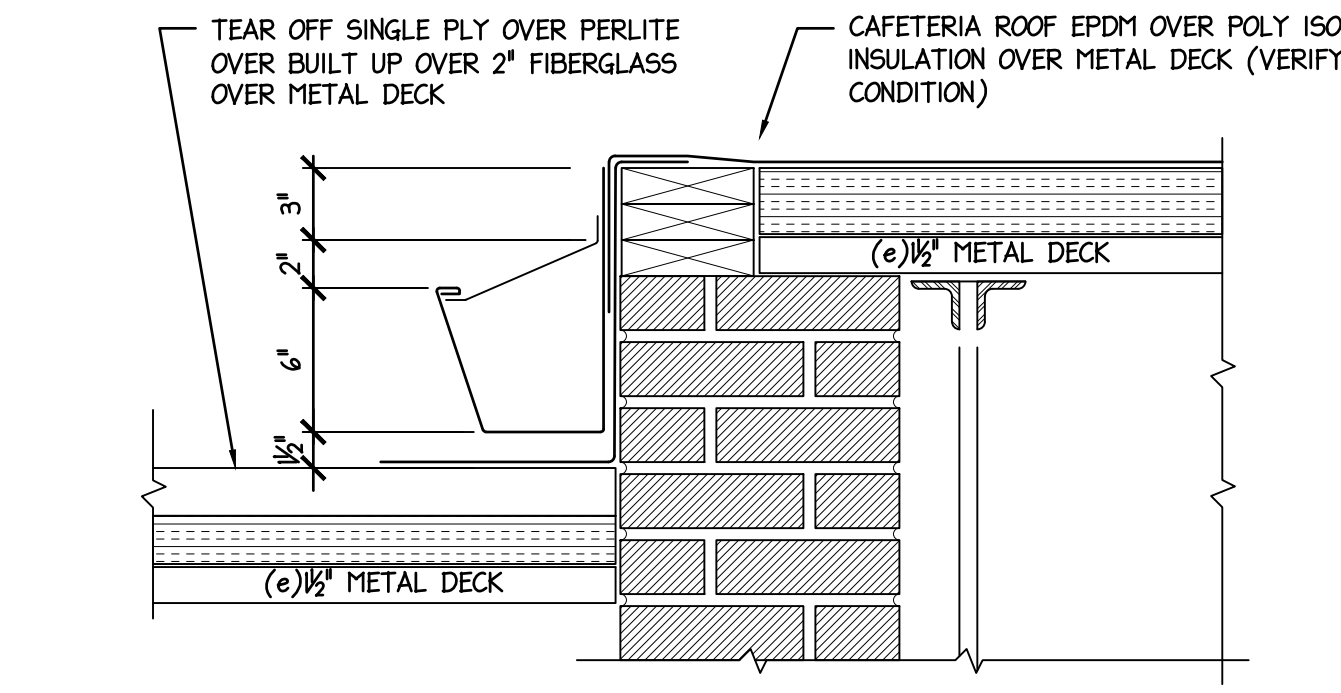
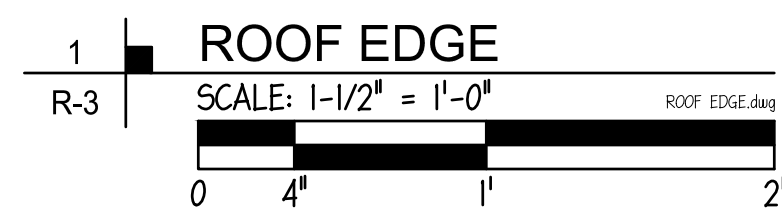
NO.	DATE	REVISIONS	REMARKS



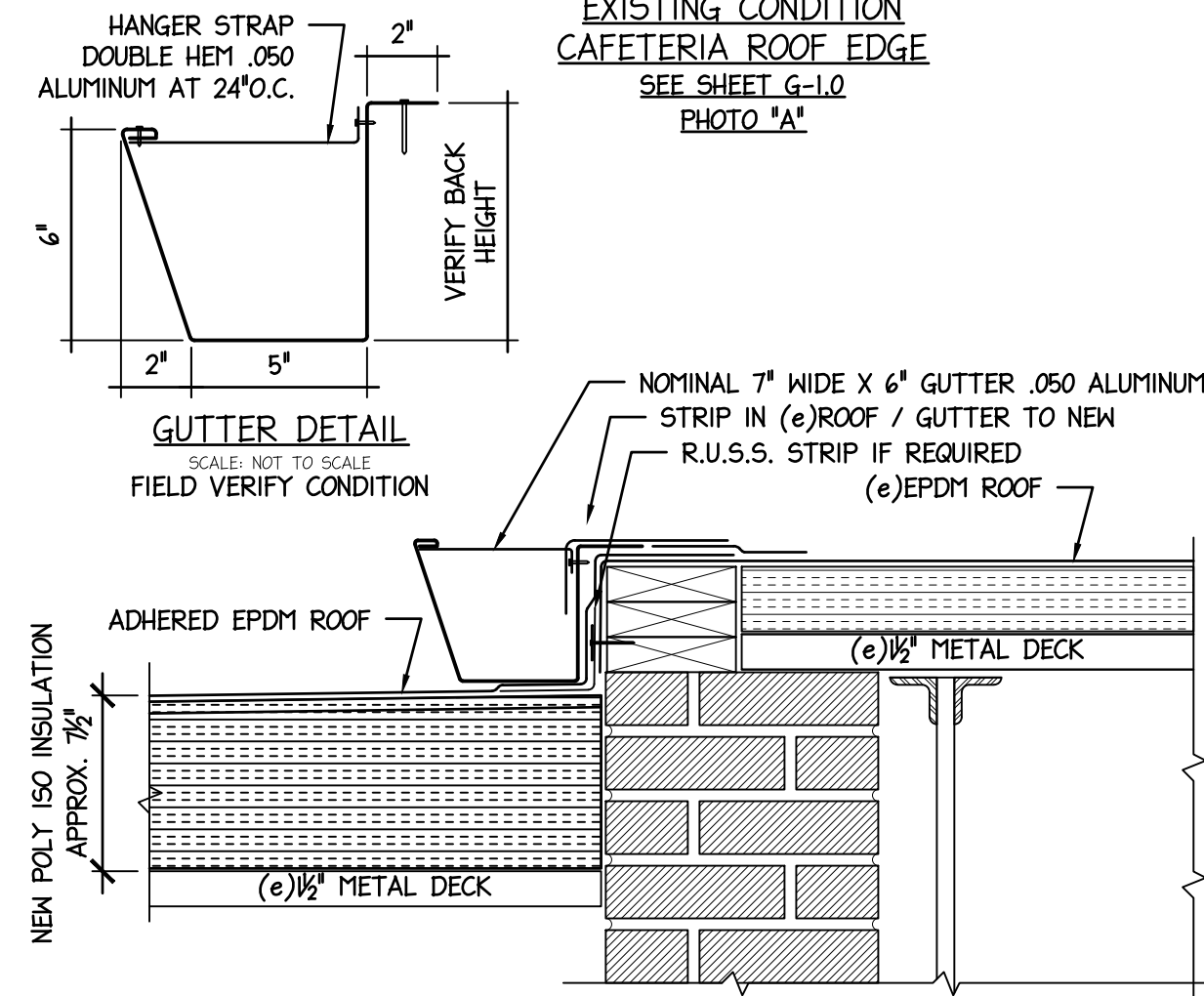
EXISTING CONDITION  
ROOF EDGE



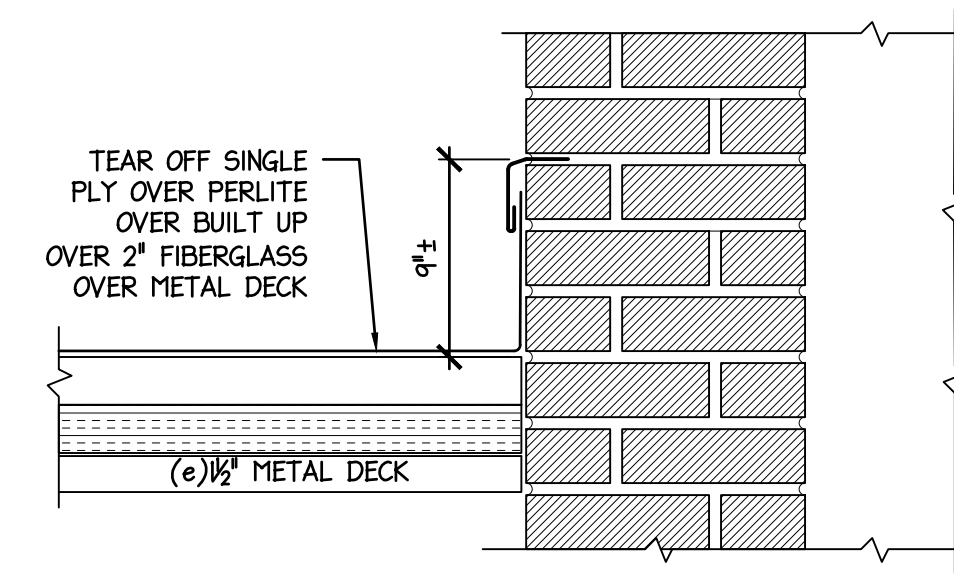
PROPOSED ROOF EDGE



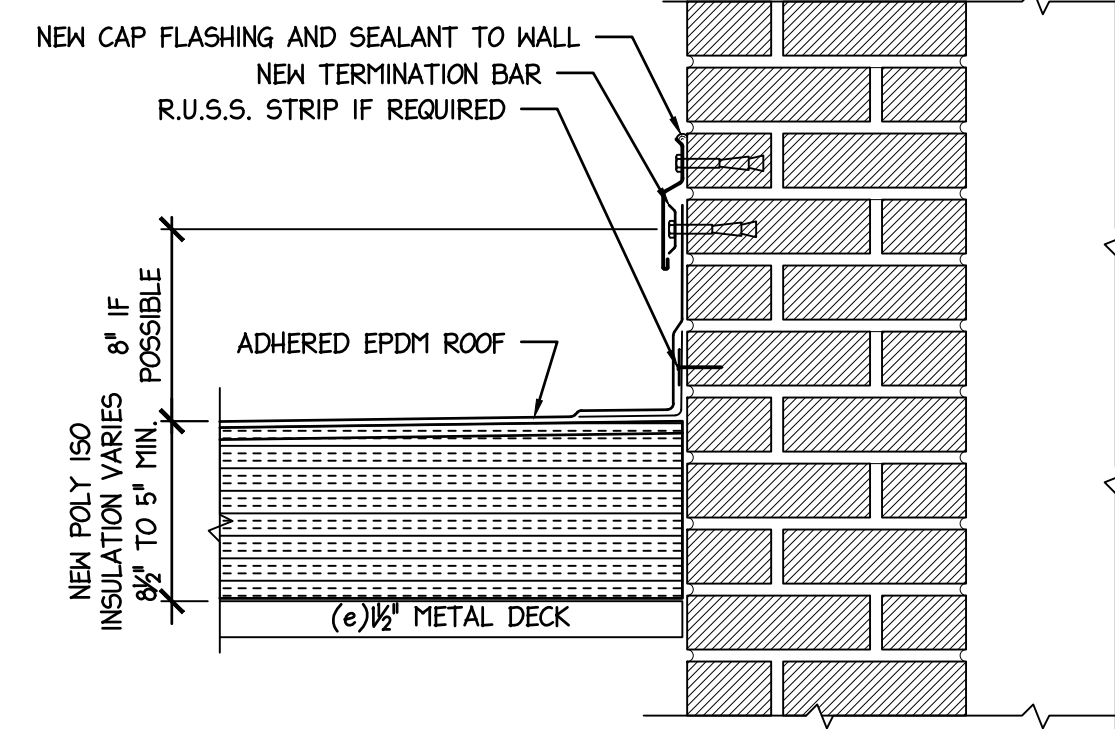
EXISTING CONDITION  
CAFETERIA ROOF EDGE  
SEE SHEET G-1.0  
PHOTO 'A'



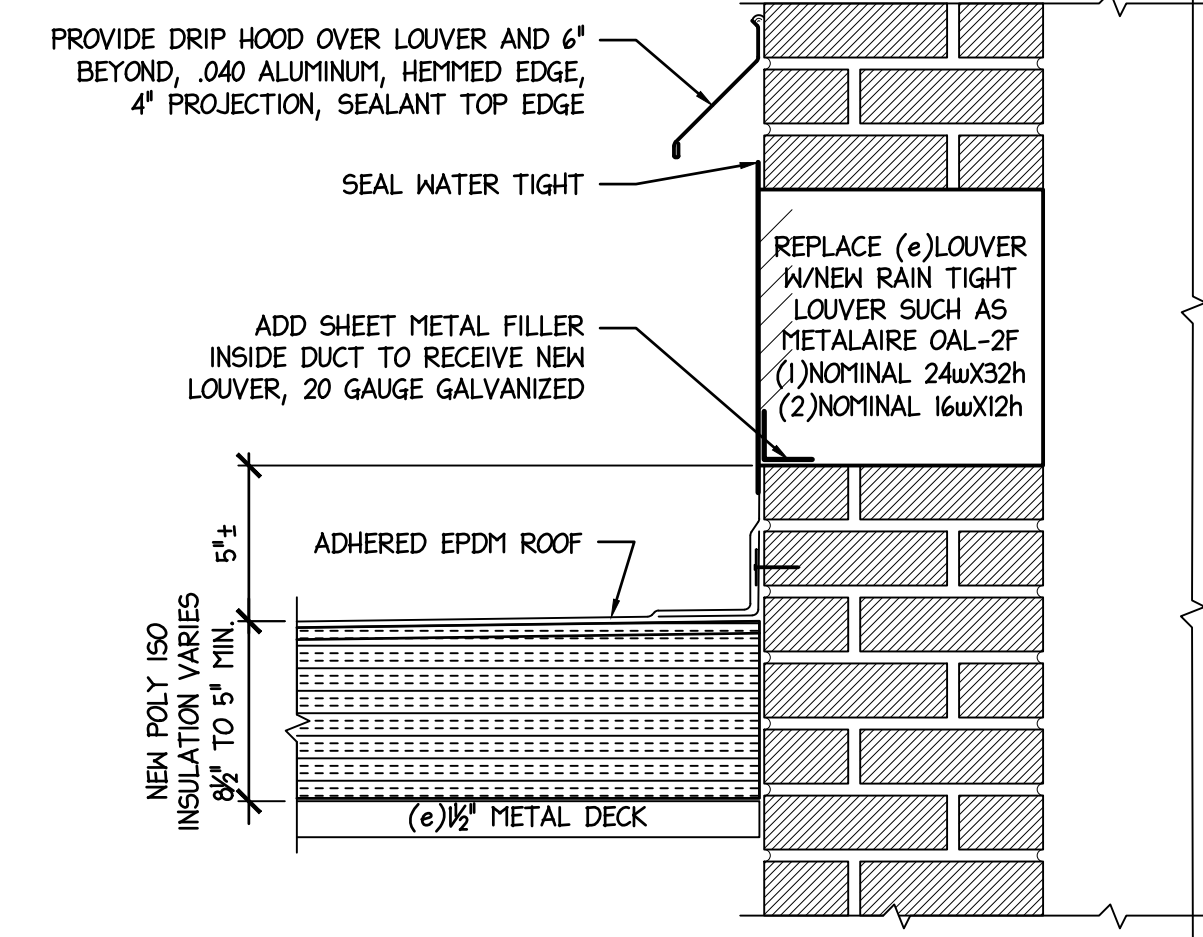
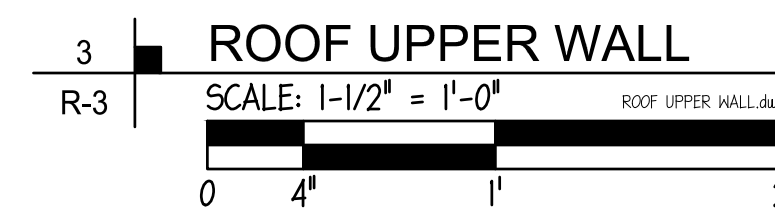
PROPOSED CAFETERIA  
ROOF EDGE



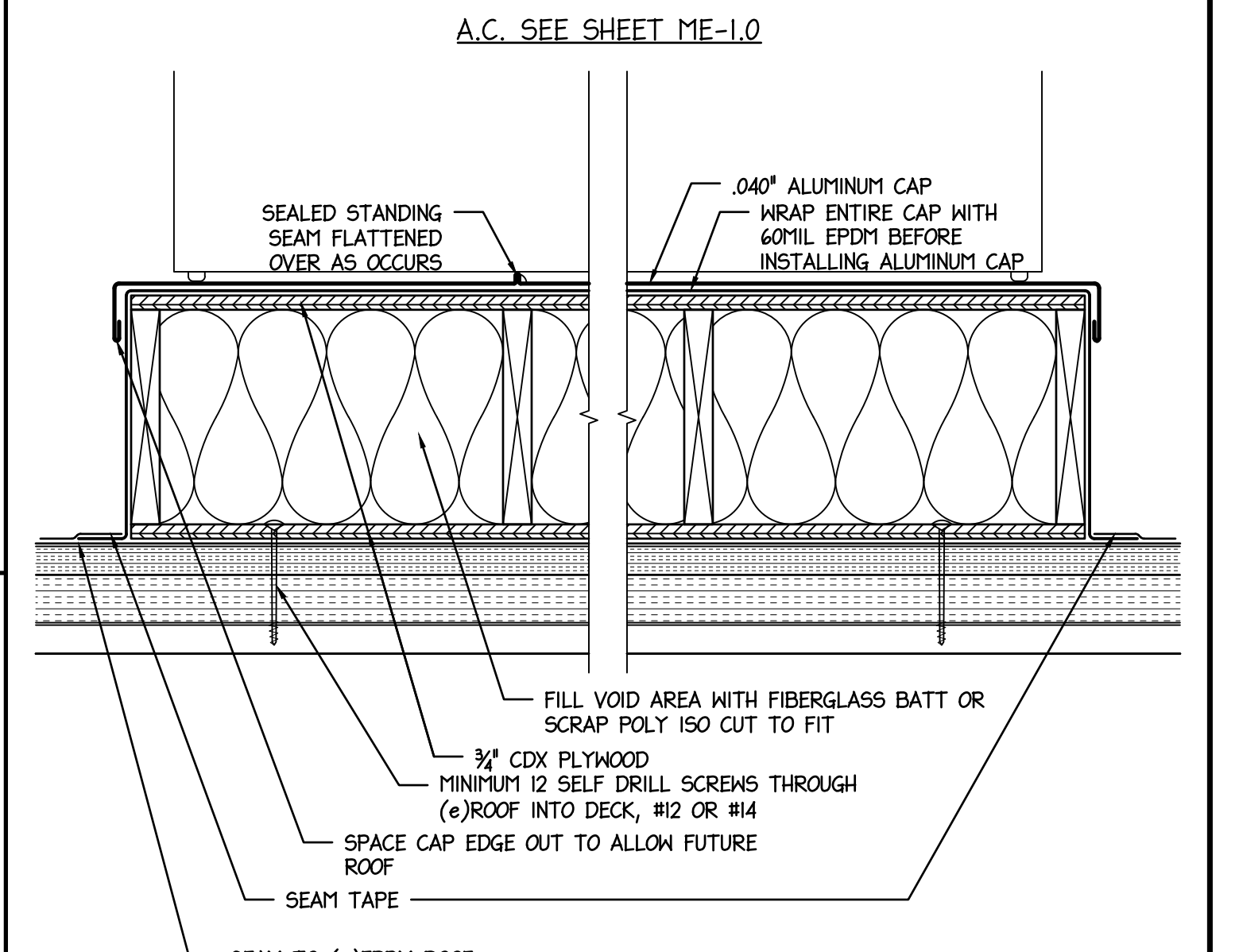
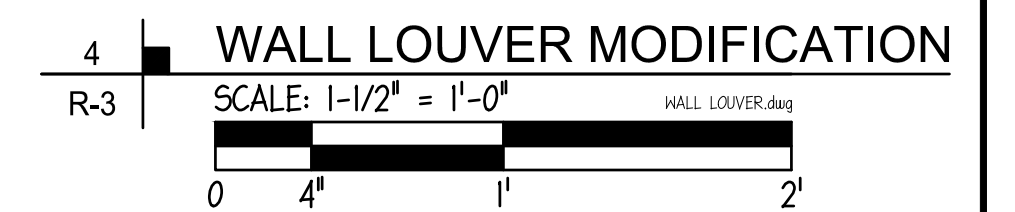
EXISTING CONDITION  
ROOF TO UPPER WALL  
SEE SHEET G-1.0  
PHOTOS 'B,C,D,F & G'



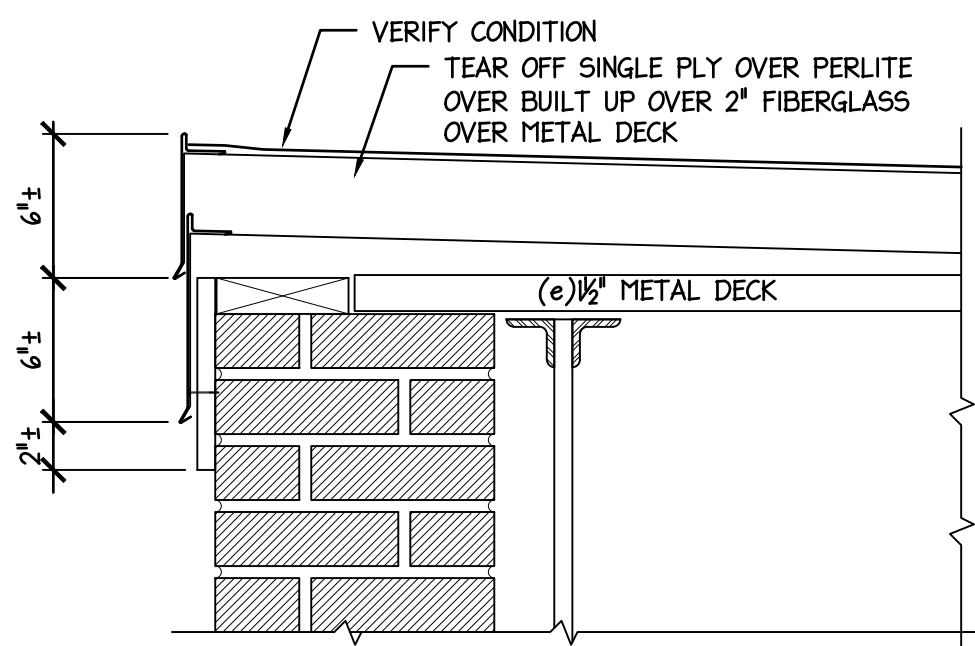
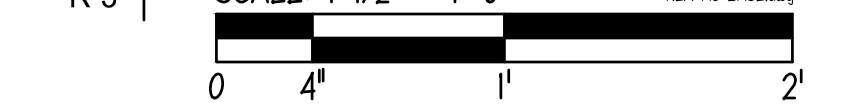
PROPOSED ROOF  
TO UPPER WALL



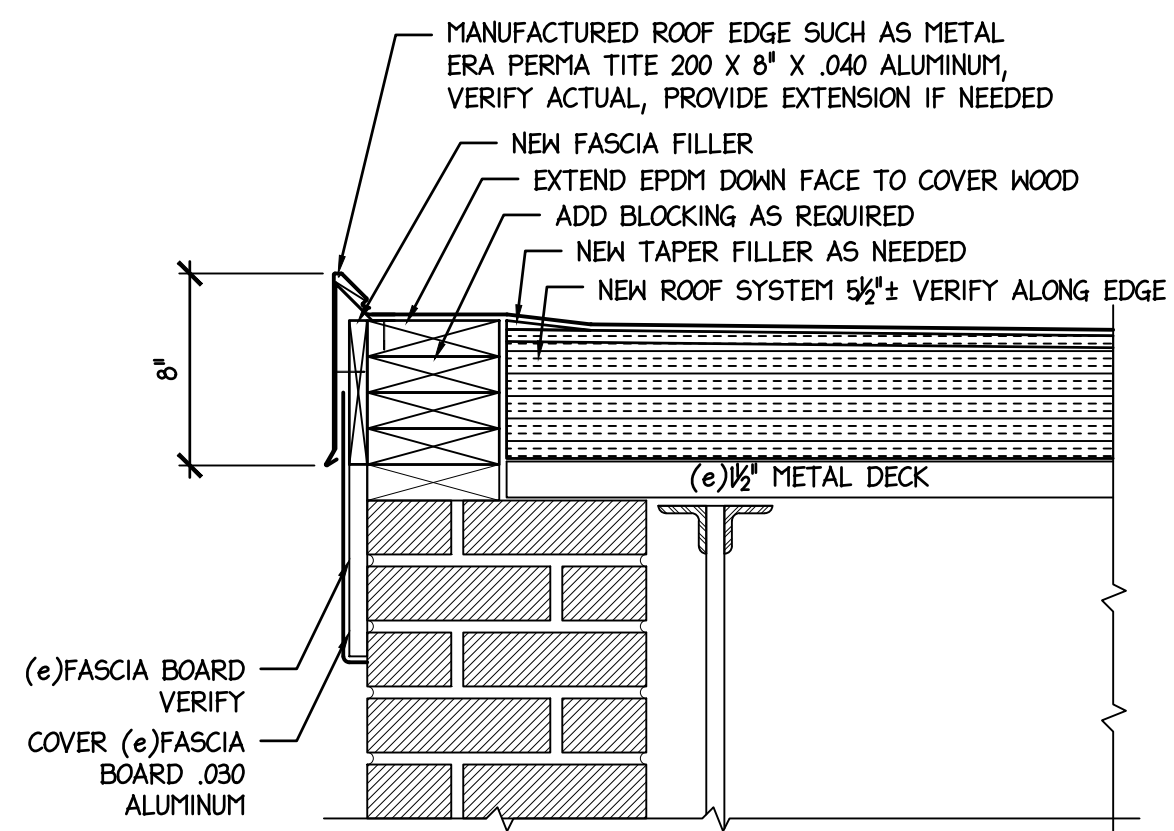
PROPOSED WALL LOUVER MODIFICATION  
SEE SHEET G-1.0 PHOTOS 'C & G'



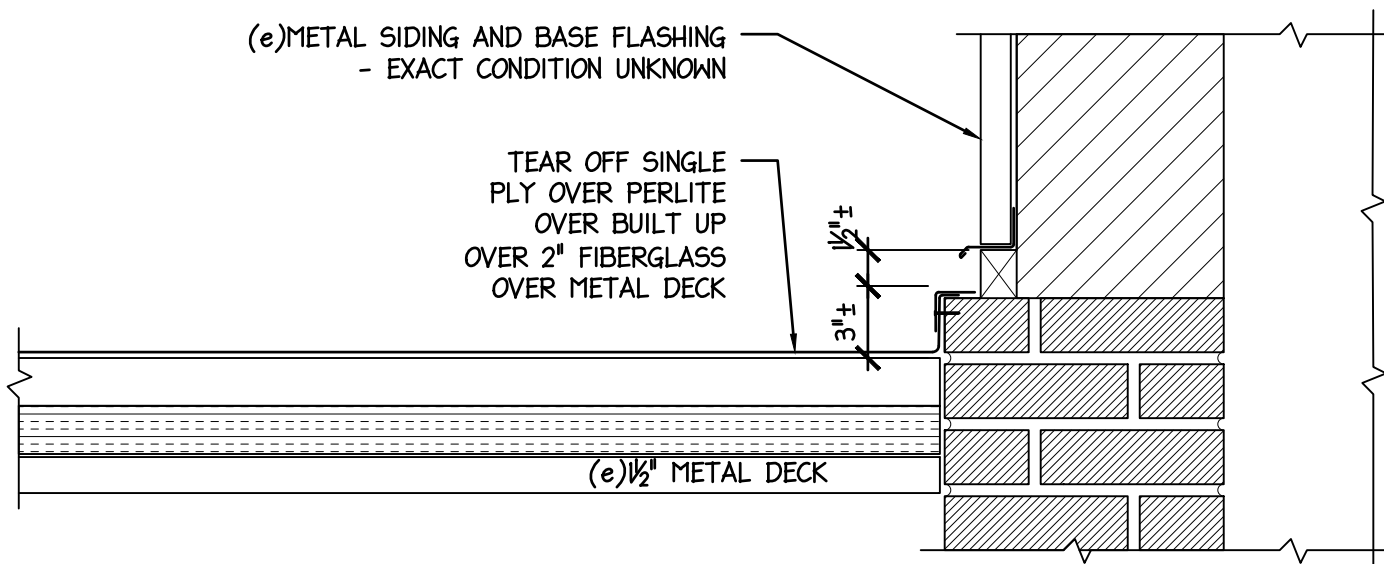
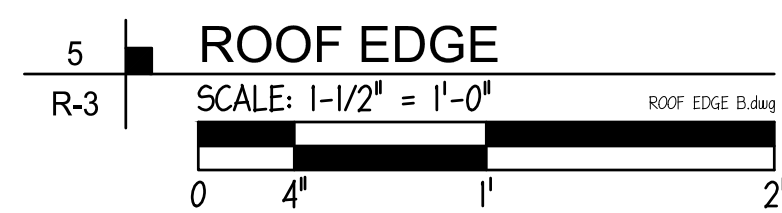
NEW AC BASE  
SCALE: 1-1/2" = 1'-0"



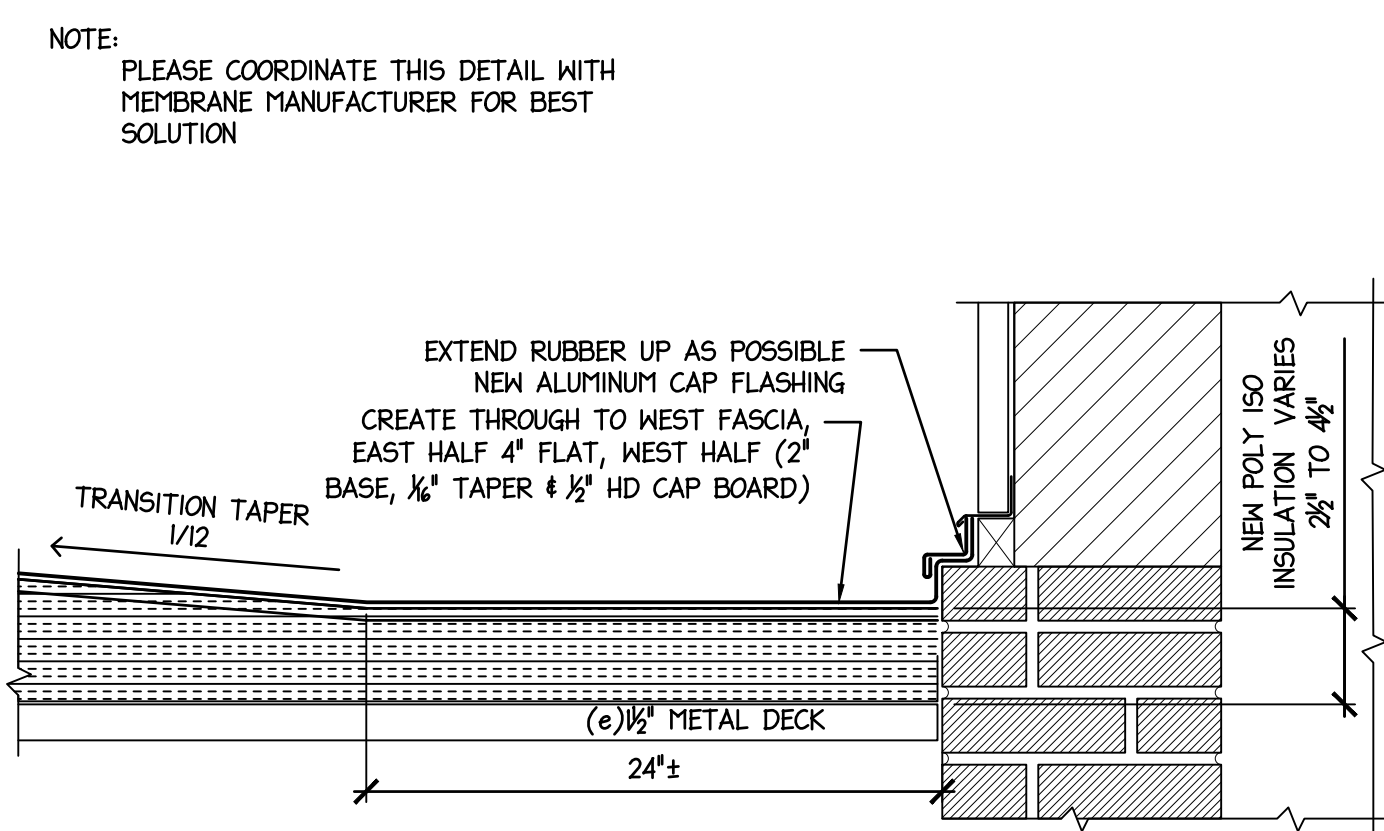
EXISTING CONDITION  
ROOF EDGE  
SEE SHEET G-1.0  
PHOTOS 'L & M'



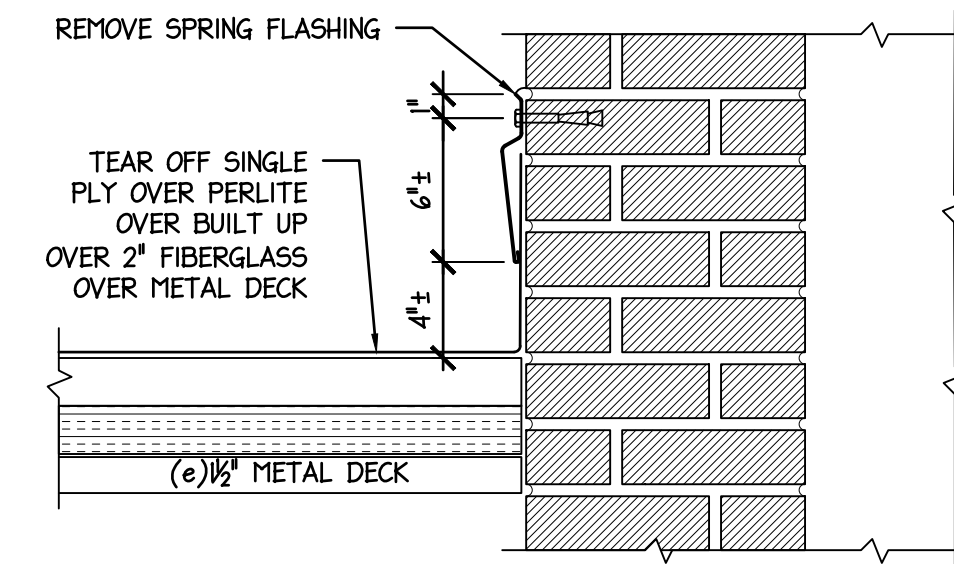
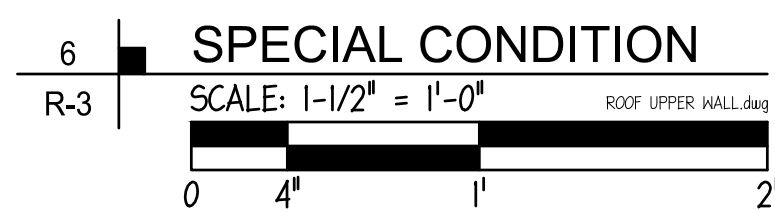
PROPOSED ROOF EDGE



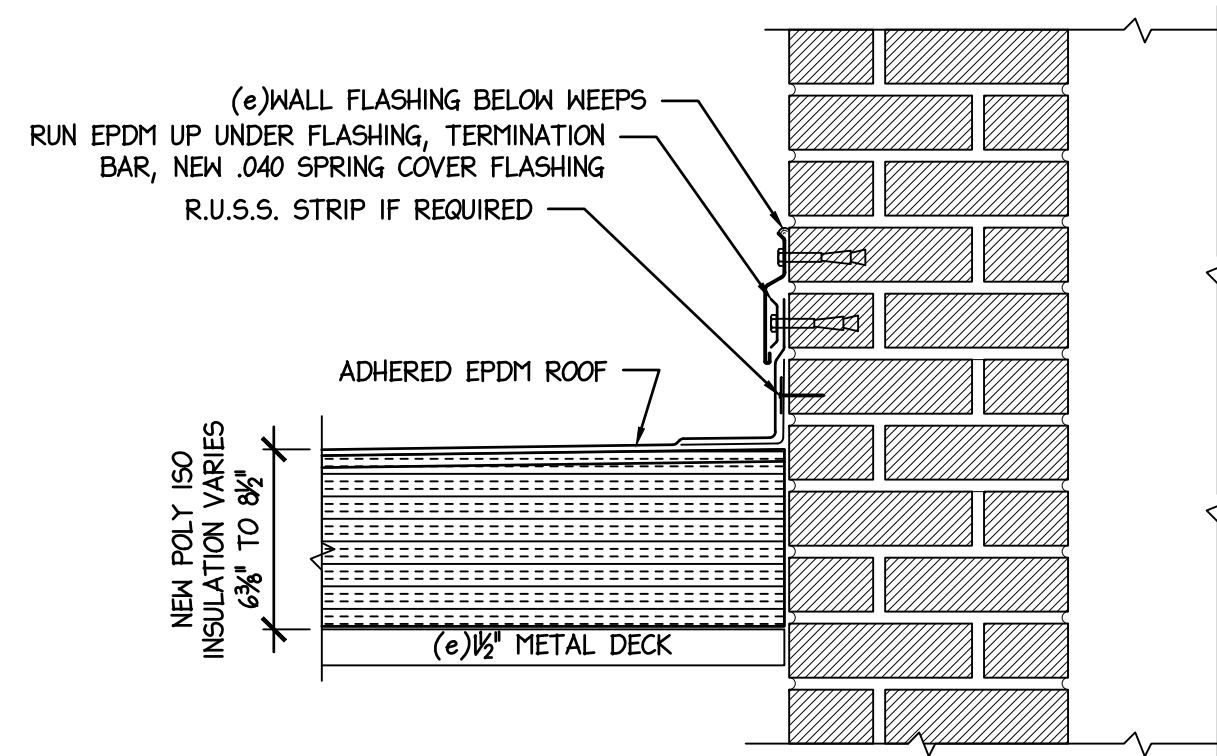
EXISTING CONDITION  
SPECIAL CONDITION TO UPPER WALL  
SEE SHEET G-1.0  
PHOTOS 'J'



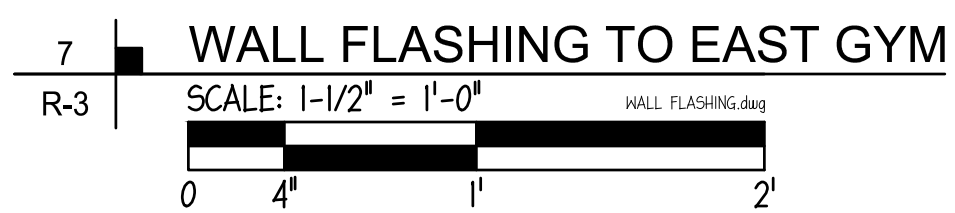
PROPOSED SPECIAL  
CONDITION TO UPPER WALL



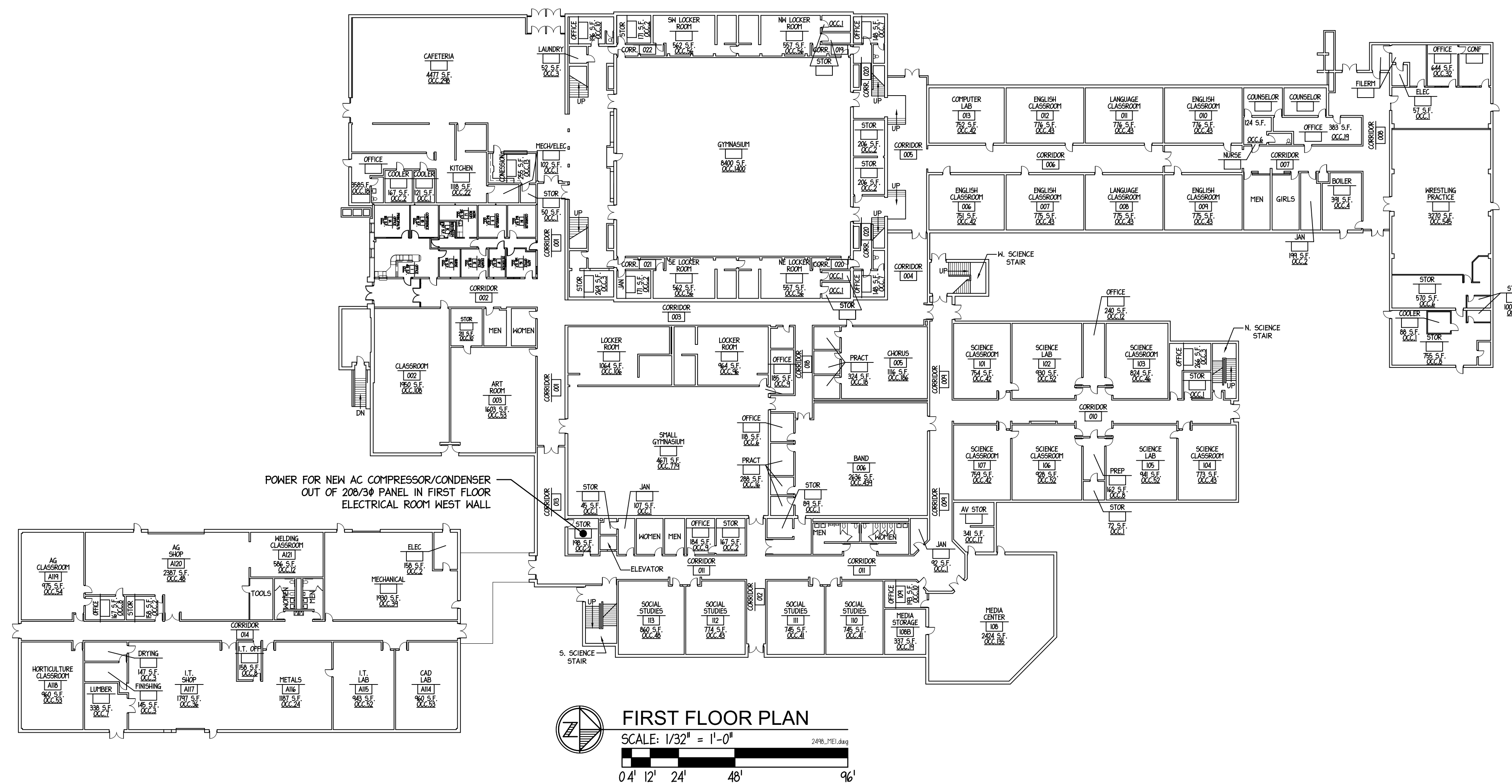
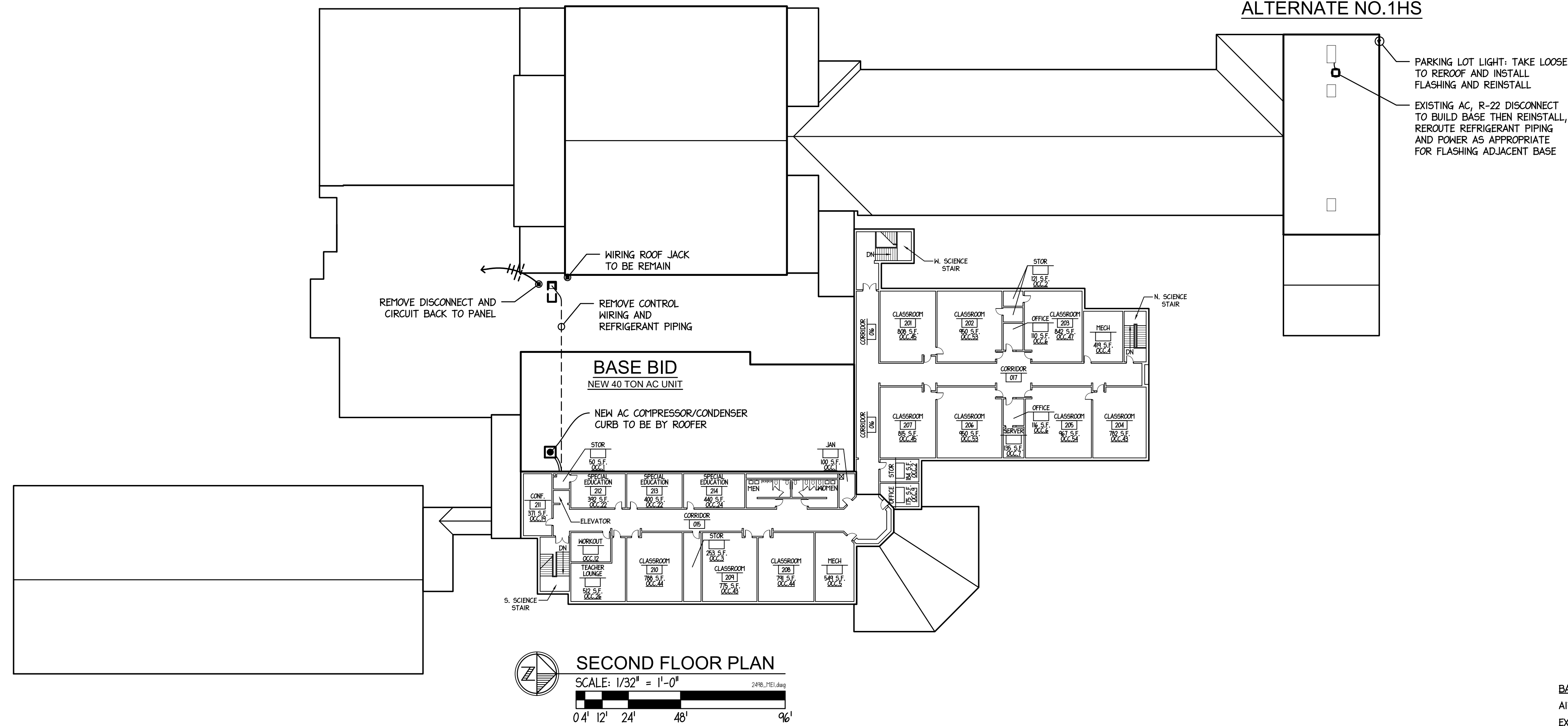
EXISTING CONDITION  
WALL FLASHING  
SEE SHEET G-1.0  
PHOTOS 'H & J'



PROPOSED ROOF  
TO UPPER WALL



NO.	DATE	REVISIONS	REMARKS



**BASE BID MECHANICAL AND ELECTRICAL WORK**

**AIR CONDITIONING COMPRESSOR CONDENSER UNIT REPLACEMENT:**

EXISTING IS R-22, EVACUATE AND REMOVE FROM SERVICE THE ROOF MOUNTED COMPRESSOR CONDENSER AND THE COIL IN THE AIR HANDLER AND THE REFRIGERANT PIPING.

INSTALL A NEW COMPRESSOR CONDENSER ON THE GYM ROOF ADJACENT TO THE AREA BEING SERVED, CONFERENCE ROOM AND TEACHER WORK ROOM. ROOFING CONTRACTOR TO BUILD A ROOF BASE FOR THE NEW UNIT.

INSTALL NEW EXPANSION COIL INTO THE AIR HANDLER, OR REPLACE THE AIR HANDLER, COORDINATE TO SELECT PROPER COIL AND MAKE SURE THE EVAPORATOR CONDENSATE PAN IS PROPERLY FUNCTIONAL WHEN WORK IS COMPLETE. AIR HANDLER IS LOCATED ABOVE THE SECOND-FLOOR LANDING CEILING IN THE SOUTH STAIR HALL.

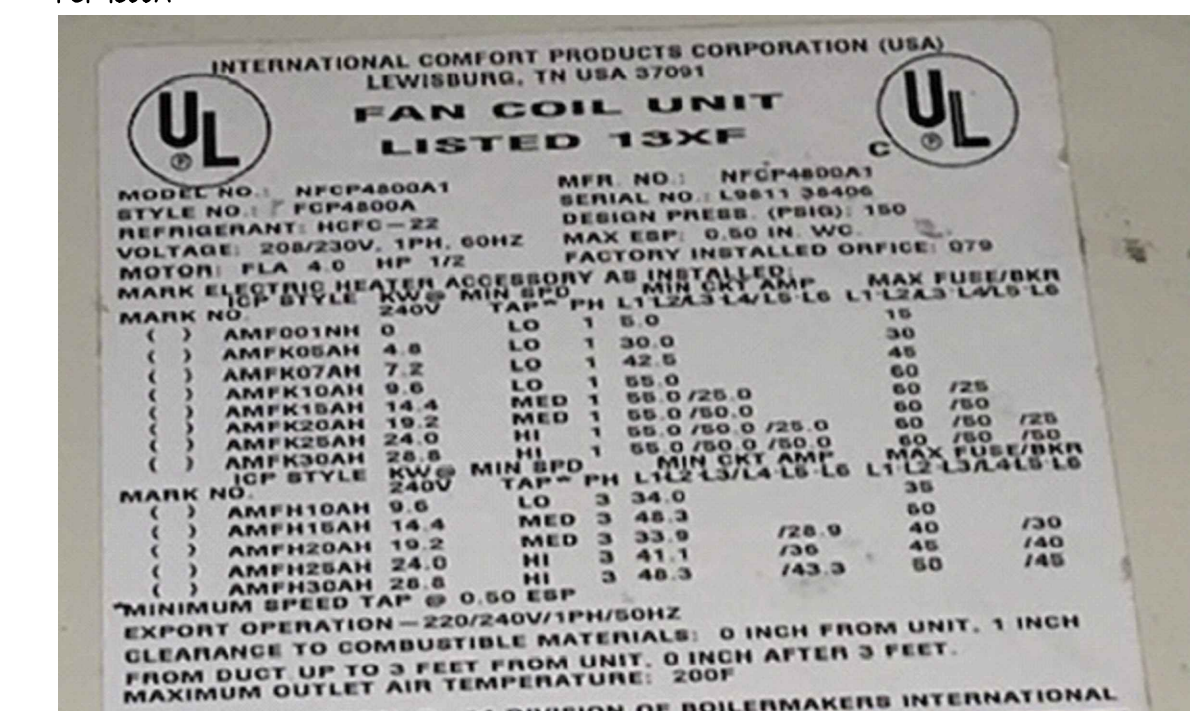
TEST OUT AND PROVIDE EVIDENCE THAT THE SYSTEM IS FULLY OPERATIONAL WHEN COMPLETE.

REFRIGERANT PIPING AND POWER TO ENTER BUILDING ABOVE THE SECOND-FLOOR CEILING AS IT CURRENTLY DOES. THE POWER WIRING IS TO BE ROUTED IN AND DROP TO FIRST FLOOR BEHIND THE ROOF DRAIN LINE NW CORNER OF THE CLOSET THROUGH THE FLOOR AND DOWN TO THE PANEL BELOW.

ELECTRICAL IS ANTICIPATED TO BE 40-AMP 208V 3PHASE CIRCUIT, IN CONDUIT WITH WEATHER TIGHT RACEWAY AND FUSED DISCONNECT OUTSIDE TO ROOF MOUNTED EQUIPMENT. ALWAYS VERIFY POWER REQUIREMENTS AND MATCH SERVICE TO UNIT. WIRE TO BE THIN COPPER, COMPLY WITH NEC AND RUN RACEWAYS IN A MANNER CONSISTENT WITH THE EXISTING WORK.

**AIR CONDITIONING TO BE**

- 4 TON, R410A REFRIGERANT,
- EER IS MINIMUM
- LOW AMBIENT SERVICE KIT INCLUDED
- COMMERCIAL SPLIT SYSTEM, CARRIER, TRANE, YORK, OR INTERNATIONAL COMFORT PRODUCTS.
- RECONNECT TO LOCAL CONTROL SYSTEM
- COORDINATE NEW EVAPORATOR/EXPANSION COIL WITH THE EXISTING AIR HANDLER.
- REFRIGERANT PIPING INSULATED WITH MINIMUM 3/4" ARMAFLEX OR SIMILAR
- SIZE REFRIGERANT PIPING FOR APPROXIMATELY 60' RUN TO INTERIOR EQUIPMENT
- WEATHER TIGHT AT BUILDING ENTRY FOR ALL PIPING AND POWER.
- EXISTING AIR HANDLER IS INTERNATIONAL COMFORT PRODUCTS 13XF/NFCP480GA1/STYLE FCP480GA



- PROVIDE ALL NECESSARY WORK TO INSTALL, COMPLETE AND MAKE PROPERLY OPERABLE THE NEW EQUIPMENT.
- FIVE (5) YEAR EXTENDED REFRIGERANT COMPONENT WARRANTY.

1702 W. College Ave.  
Suite E  
Normal, IL 61761-2793  
p: 309.452.1271  
middletonarc.com  
middletonarc.net



**PRAIRIE CENTRAL HIGH SCHOOL PARTIAL REROOF**  
411 N. 7th. Street - Fairbury, IL 61739  
for Prairie Central CUSD No. 8  
605 N. 7th. Street  
Fairbury, IL 61739

**MECHANICAL  
ELECTRICAL  
ROOF PLAN**

NO.	DATE	REVISIONS	REMARKS

PROJECT NO.  
24980319

ISSUE DATE  
MARCH 24, 2020

SHEET  
**ME-1**

OF 7 SHEETS