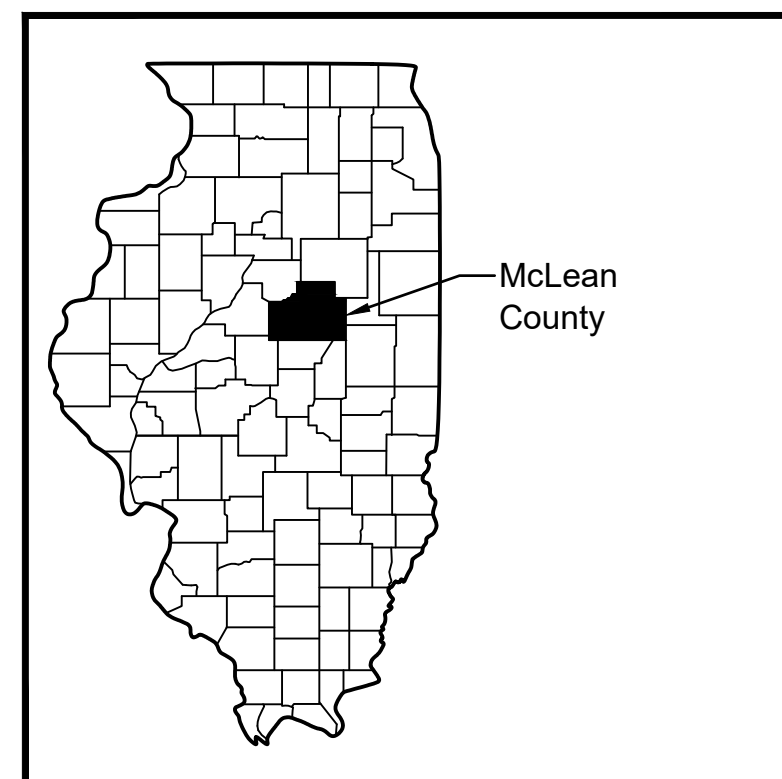


PARKSIDE JUNIOR HIGH SCHOOL F.A.C.S. ROOM 155 REMODEL

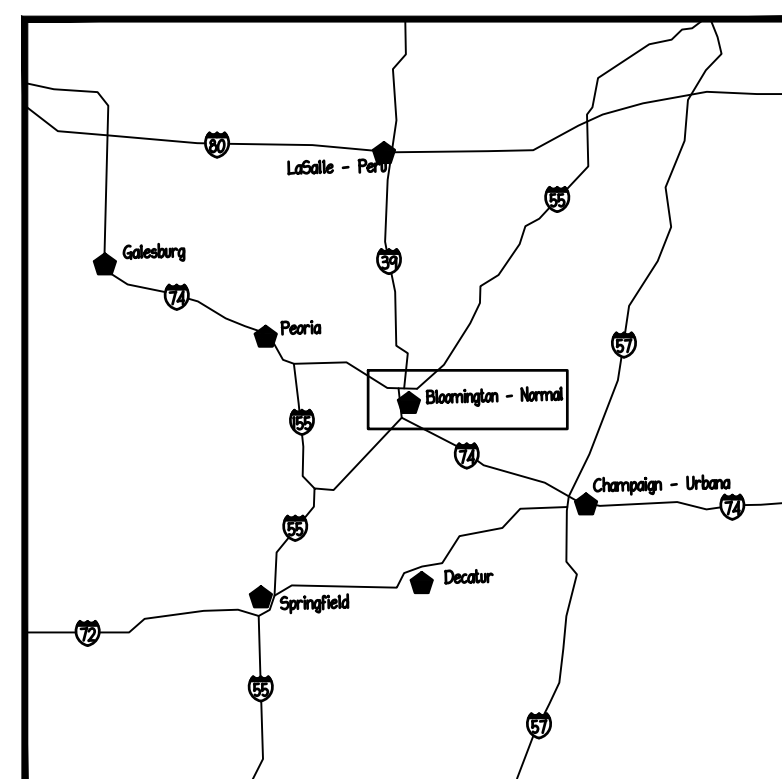
101 Parkside Road - Normal, IL 61761
 FOR McLean County Unit District No. 5
 Unit District Office 1809 W. Hovey Ave.
 Normal, Illinois 61761-4339



Illinois Counties Scale: Not to Scale



STATE LOCATION MAPS



Regional Map



CITY LOCATION MAPS



PARKSIDE JUNIOR HIGH SCHOOL
 FAMILY AND CONSUMER SCIENCE'S CASEWORK
 101 N. PARKSIDE ROAD, NORMAL, IL 61761 - (24202318)



PARKSIDE JUNIOR HIGH SCHOOL

ARCHITECTURAL SYMBOL SCHEDULE	
MARK	IDENTIFICATION
	SPOT ELEVATION (EL), (ELEV.)
	ENLARGED DETAIL DETAIL NUMBER _____ SHEET LOCATION _____
	ENLARGED ELEVATION DIRECTION _____ ELEVATION LETTER _____ A-2.0 _____ SHEET LOCATION _____
	ENLARGED SECTION DIRECTION _____ SECTION NUMBER _____ A-2.5 _____ SHEET LOCATION _____
SCHEDULE OF ABBREVIATIONS	

A.F.F.	ABOVE FINISHED FLOOR
APPROX.	APPROXIMATELY
€	CENTERLINE DATUM
BLK'G	BLOCKING
CONT.	CONTINUOUS
DEMO	SELECTIVE DEMOLITION & REPAIR
D.S.	DOWNSPOUT LOCATION
(E), EXIST.	EXISTING
EQUIP.	EQUIPMENT, AS APPLIES
EXP. JT.	EXPANSION JOINT, AS APPLIES
GA., ga.	GAGE, GAUGE, AS APPLIES
G.C.	GENERAL PRIME CONTRACTOR WORK
J.	ROOF JACK - PIPING OR CONDUIT
MAX.	MAXIMUM ALLOWED SPACING
M.C.	MECHANICAL SUB-CONTRACTOR
MIN.	MINIMUM SPACING ALLOWED
N.T.S.	NOT TO SCALE
O.C.	ON CENTER
SIM.	SIMILAR
SPECS.	REFER TO SPECIFICATION BOOKLET (SPEC.)
ST. ST.	STAINLESS STEEL, (S.S.)
TYP.	TYPICAL
U.N.O.	UNLESS NOTED OTHERWISE
● O-1	LOCATION OF A.C.M. TEST, SEE SPEC. 02083
R.C.	PRIME CONTRACTOR - SINGLE CONTRACT
G.C.	GENERAL SUB-CONTRACTOR
E.C.	ELECTRICAL SUB-CONTRACTOR
M.C.	MECHANICAL SUB-CONTRACTOR

MARK	COMPOSITION
	CONCRETE BLOCK
	BRICK
	CAST-IN-PLACE CONCRETE
	INSULATION (AS APPLIES)
	DIMENSIONAL LUMBER AS NOTED
	PLYWOOD AS NOTED
	NEW STUD / GYPSUM WALL BOARD WALL

SHEET INDEX	
T-1	TITLE SHEET - JOB INFORMATION
C-1	PJHS - SITE PLAN
A-1	PJHS - FLOOR PLANS
A-2	PJHS - ELEVATIONS
A-2.1	PJHS - DETAILS

I HEREBY CERTIFY THAT THE PLANS AND SPECIFICATIONS DATED MAY 8, 2020 - AT PARKSIDE JUNIOR HIGH SCHOOL, 101 PARKSIDE ROAD, NORMAL, IL 61761 2020 F.A.C.S. ROOM 155 REMODEL FOR MCLEAN COUNTY UNIT SCHOOL DISTRICT NO. 5, UNIT DISTRICT OFFICE 1809 W. HOVEY AVE., NORMAL, ILLINOIS 61761-4339 WERE PREPARED WITH MY SUPERVISION USING BOCA BUILDING CODE # ILLINOIS ADMINISTRATIVE CODE 105 AND TO THE BEST OF MY KNOWLEDGE, COMPLY WITH THE HEALTH/LIFE SAFETY CODE AS PREPARED AND PROVIDED BY THE STATE OF ILLINOIS BOARD OF EDUCATION. I HAVE PREPARED, OR CAUSED TO BE PREPARED UNDER MY DIRECT SUPERVISION, THE ATTACHED PLANS AND SPECIFICATIONS AND STATE THAT TO THE BEST OF MY KNOWLEDGE AND BELIEF AND TO THE EXTENT OF MY CONTRACTUAL OBLIGATION, THEY COMPLY WITH THE ENVIRONMENTAL BARRIERS ACT (ILL. REV. STAT. 1985, CH. III-1/2, PARS. 3711 ET. SEQ. AS AMENDED) AND THE ILLINOIS ACCESSIBILITY CODE, 71 ILLINOIS ADMINISTRATIVE CODE 400.

RANDALL MIDDLETON 001-007938 EXPIRES: 30 NOVEMBER, 2020
 MIDDLETON ASSOCIATES INCORPORATED

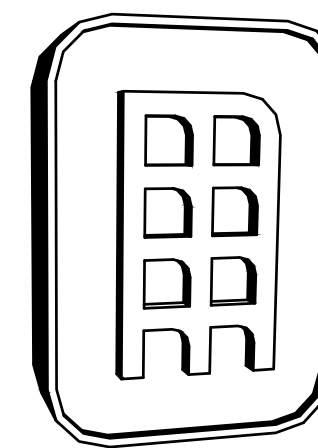
PROJECT NOTE: ALL NEW MATERIALS EMPLOYED IN THE WORK SHALL BE ASBESTOS FREE AND PCB FREE. CONTRACTOR SHALL SUBMIT CERTIFICATION OF SUSPECT ITEMS UPON REQUEST, AND FOR THE OVERALL PROJECT AT THE CONCLUSION OF THE WORK.



MIDDLETON ASSOCIATES INCORPORATED ARCHITECTURAL SERVICES

1702 W. COLLEGE AVE.-STE 'E'
 PHONE (309) 452-1271
<http://www.middletonassociates.net>

NORMAL, IL 61761-2793
 FAX (309) 454-8049
middleton@middletonassociates.net



1702 W. College Ave.
 Suite E
 Normal, IL 61761-2793
 p: 309.452.1271
 f: 309.454.8049
middletonassociates.net

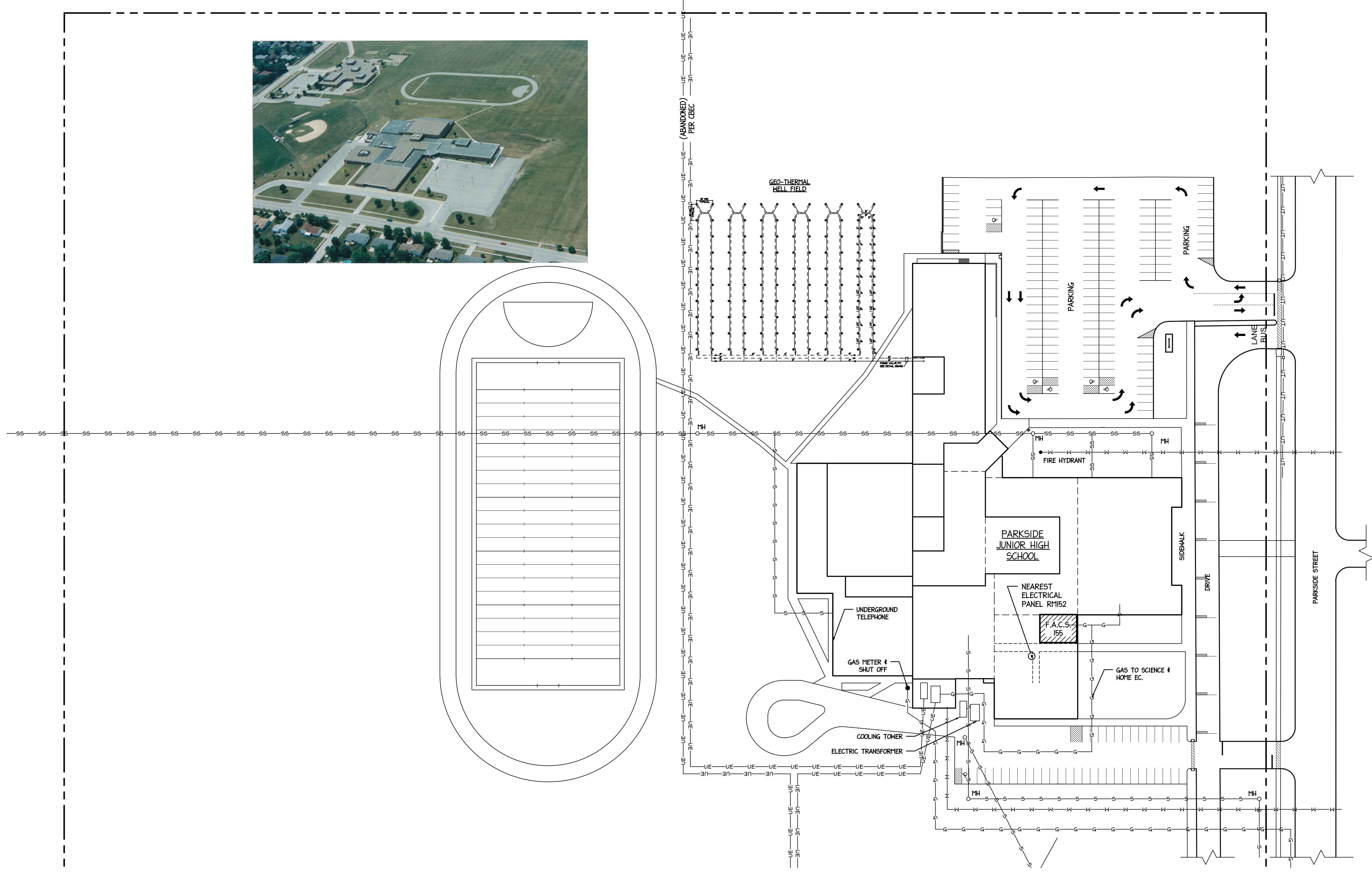


PARKSIDE JUNIOR HIGH SCHOOL FACS RM155 REMODEL
 101 Parkside Road - Normal, IL 61761
 for McLEAN COUNTY UNIT DISTRICT NO.5
 Unit District Office - 1809 West Hovey Avenue
 Normal, Illinois 61761-4339

TITLE SHEET

NO.	DATE	REVISIONS	REMARKS

PROJECT NO. 24202318
 ISSUE DATE MAY 8, 2020
 SHEET T-1
 OF 5 SHEETS



REVISIONS	
NO.	DATE

PROJECT NO.
24202318

ISSUE DATE
MAY 8, 2020

SHEET
C-1

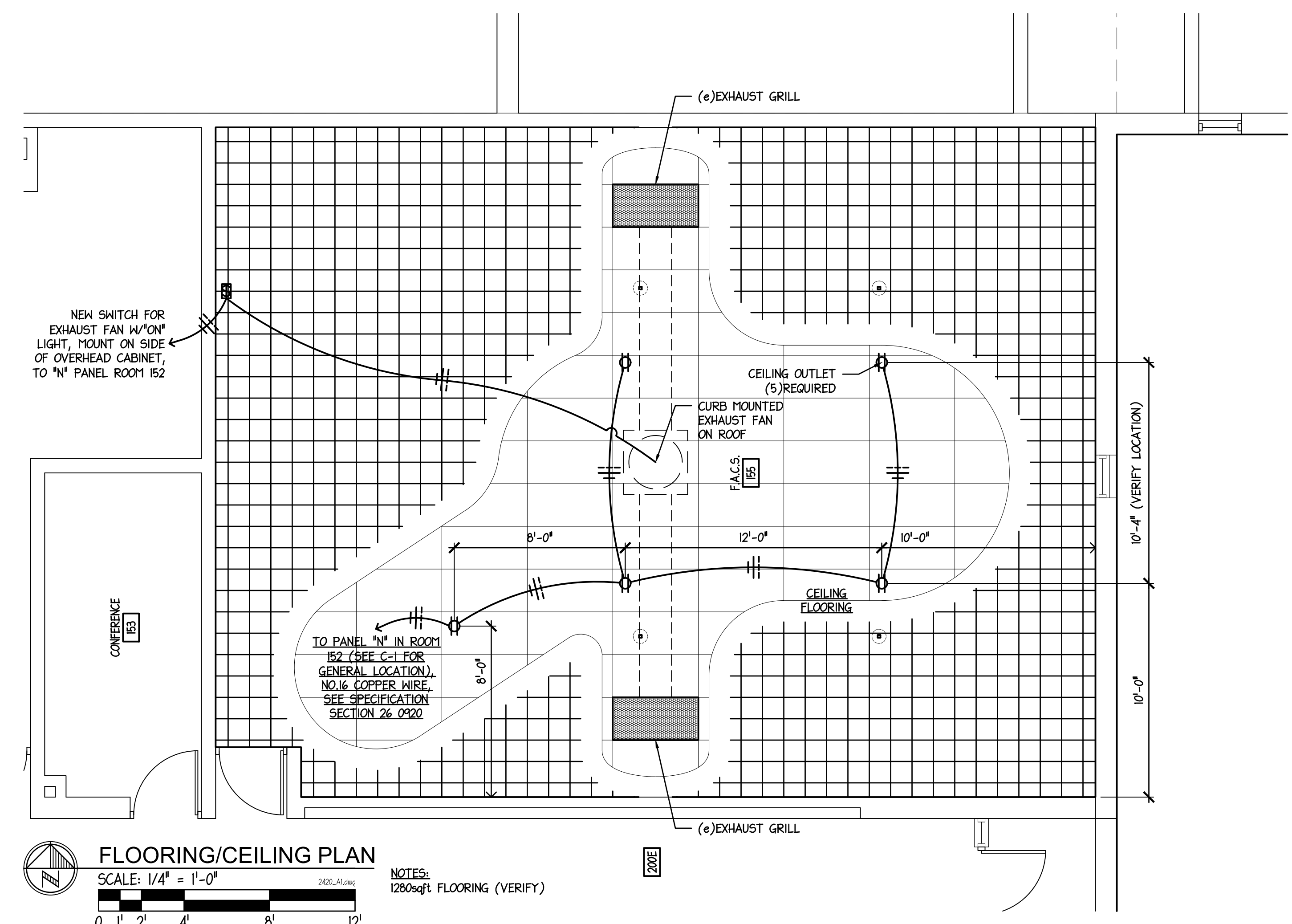
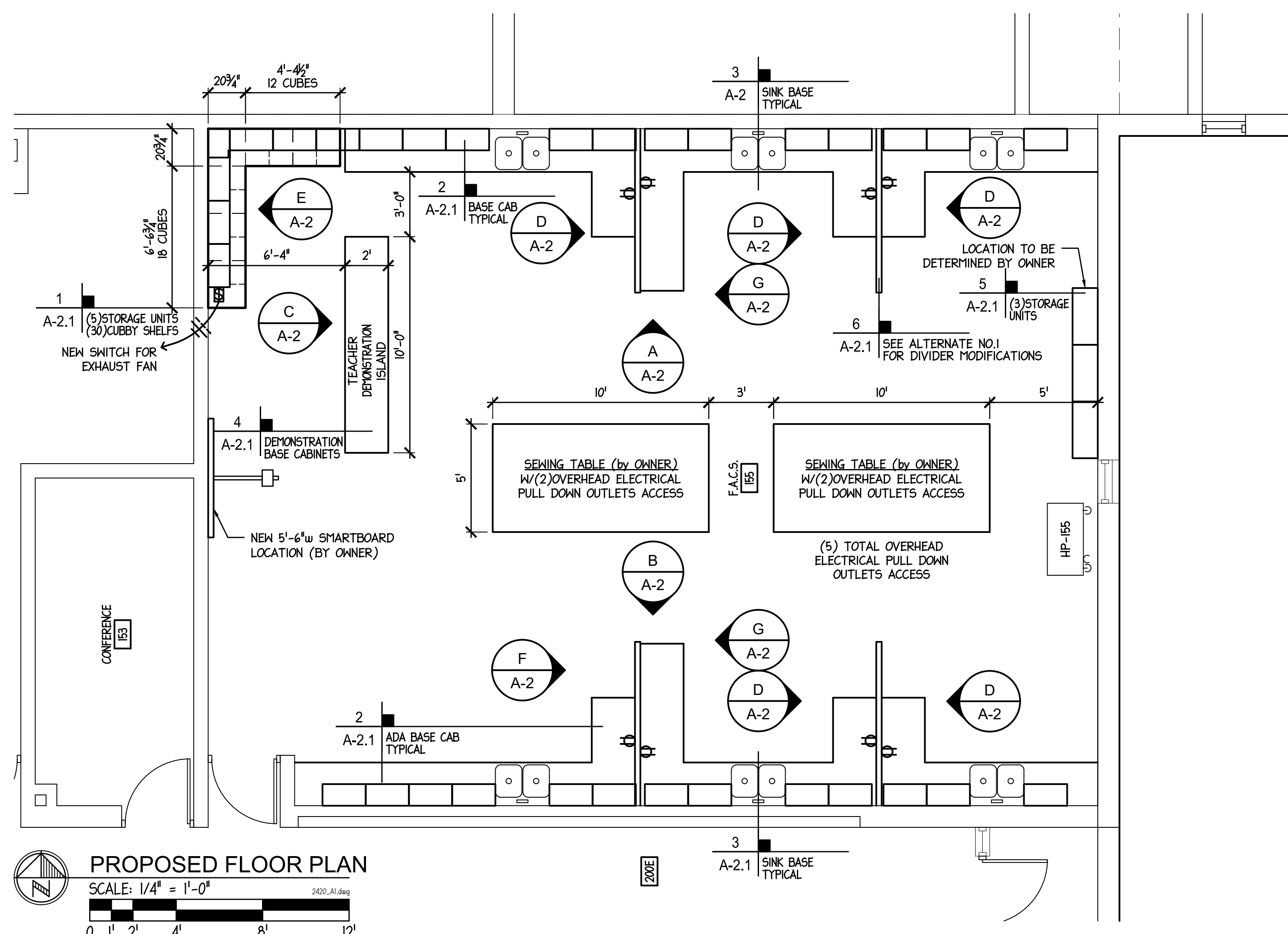
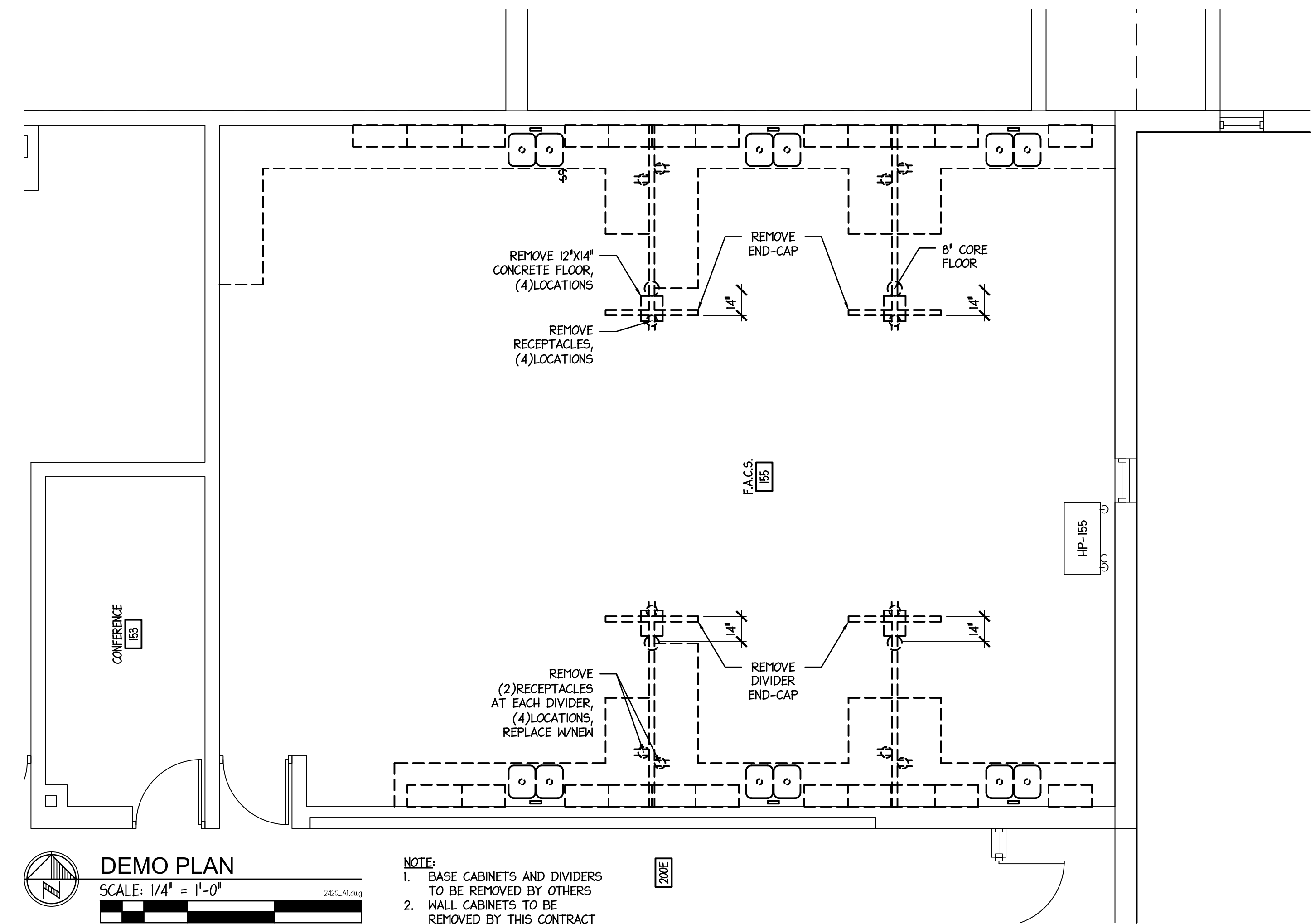
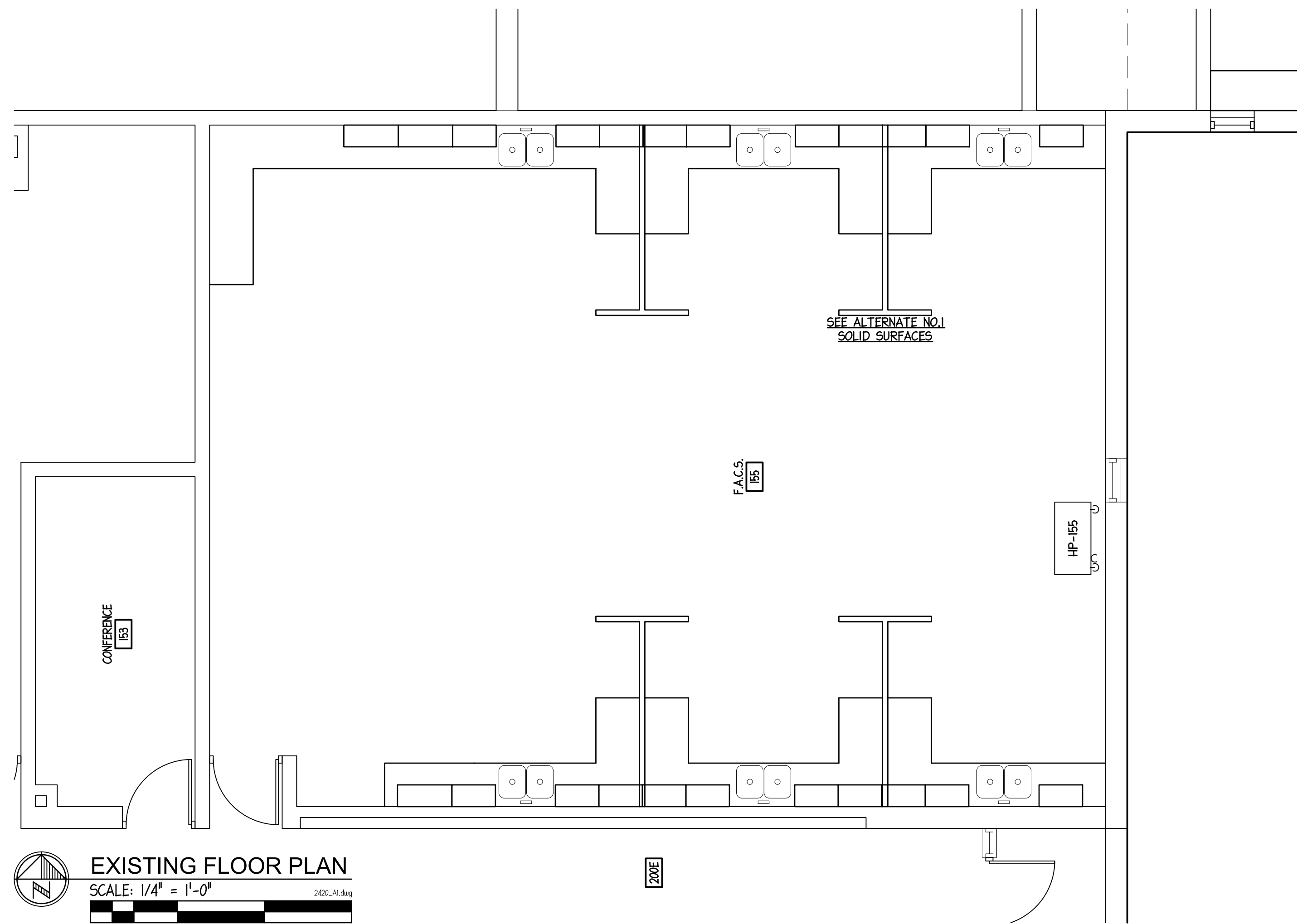
OF 5 SHEETS

PARKSIDE JUNIOR HIGH SCHOOL FACS RM155 REMODEL
 101 Parkside Road - Normal, IL 61761
for McLEAN COUNTY UNIT DISTRICT NO.5

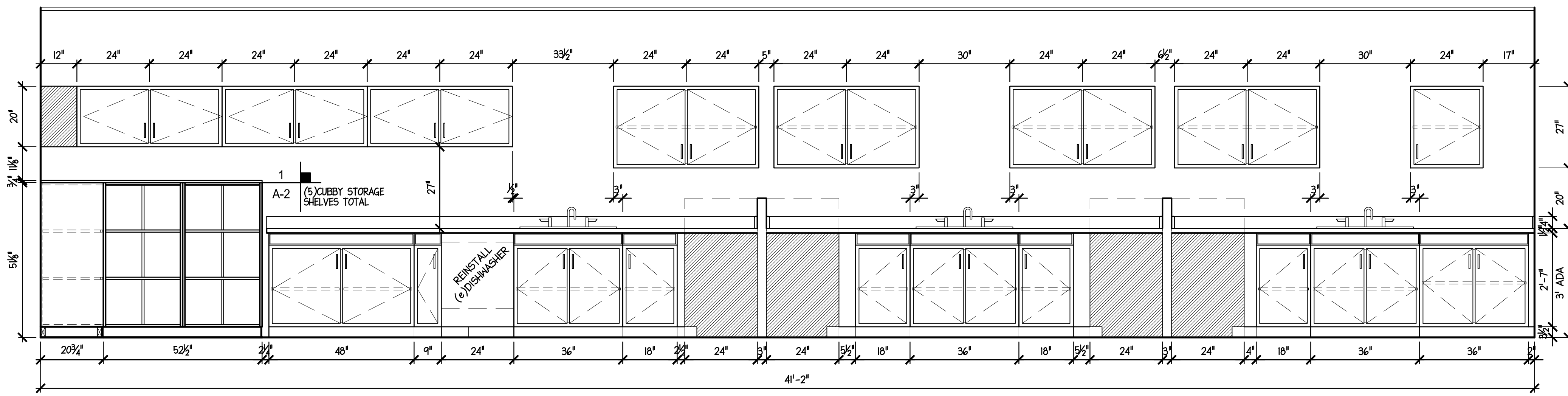
MIDDLETON ASSOCIATES, INC ARCHITECTS

THE CONTRACTOR SHALL VERIFY CONDITIONS & DIMENSIONS ON THE JOB. INFORMATION SHOWN ON ANY PART OF THE DRAWINGS SHALL APPLY TO SIMILAR CONDITIONS AT OTHER LOCATIONS IN THE WORK UNLESS SET FORTH OTHERWISE

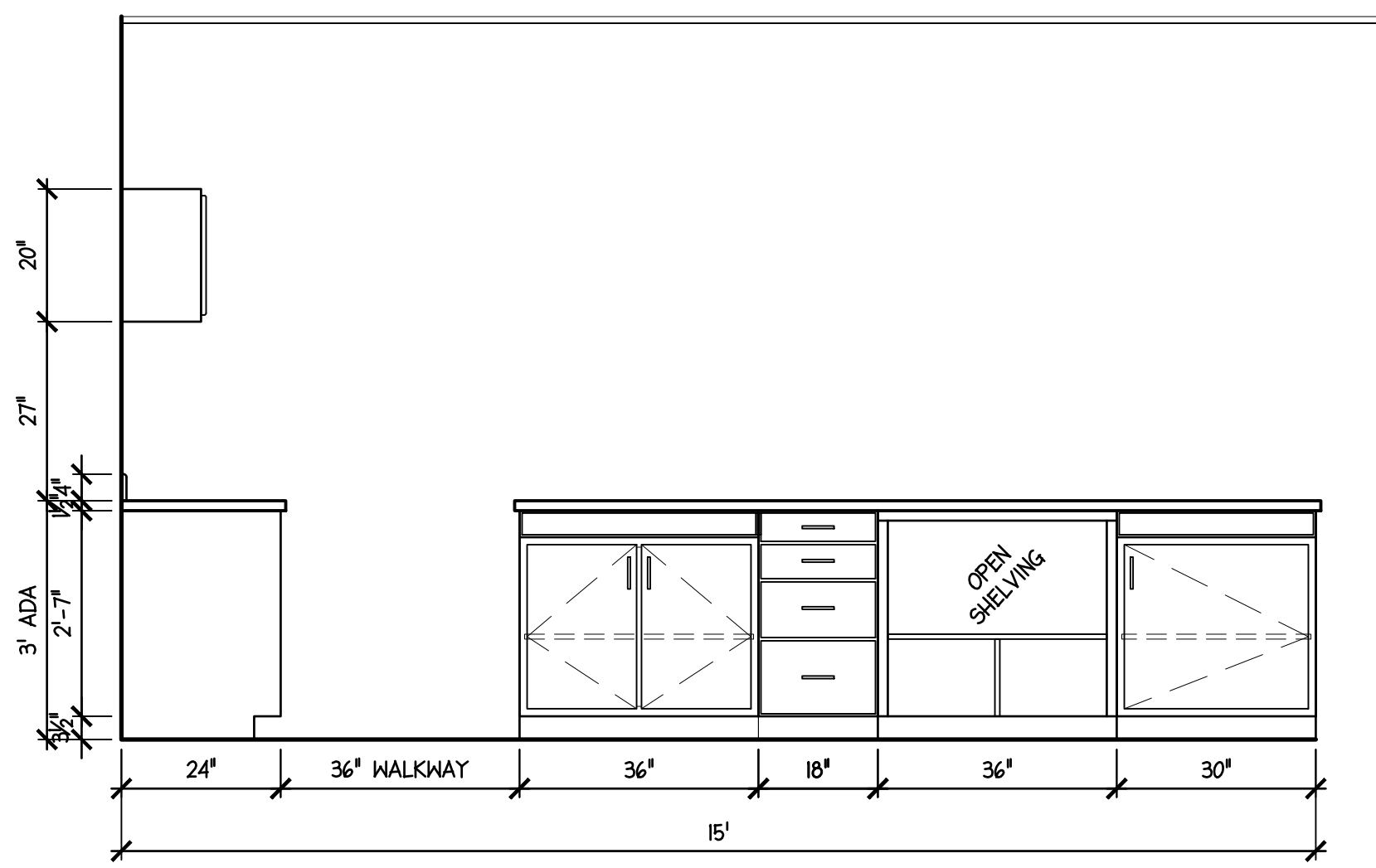
1702 W. College Ave.
Suite E
Normal, IL 61761-2793
p: 309.452.1271
m: 309.454.8049
middletonassociates.net



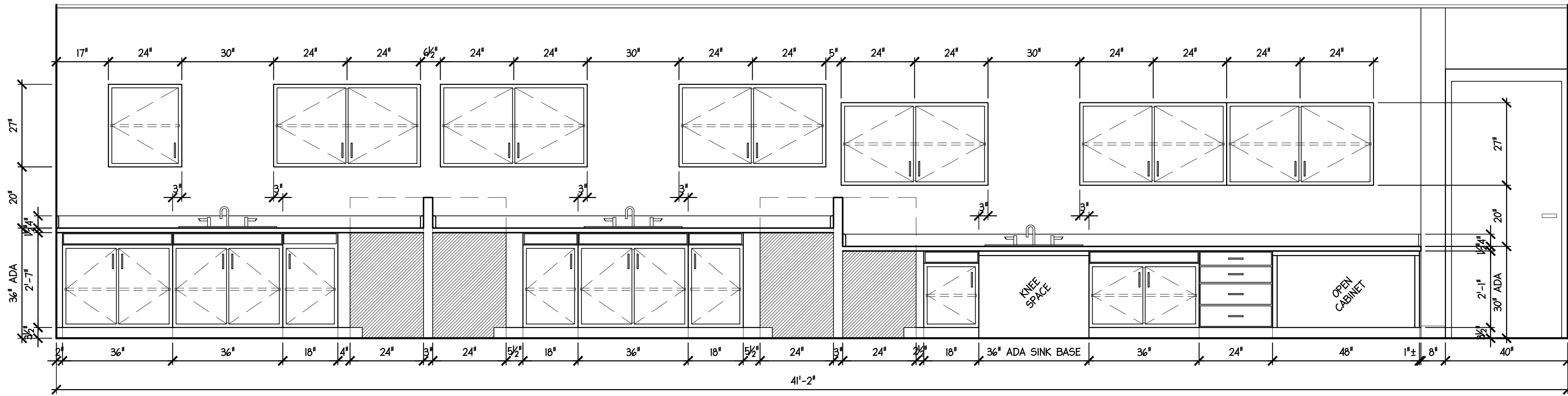
NO.	DATE	REVISIONS	REMARKS



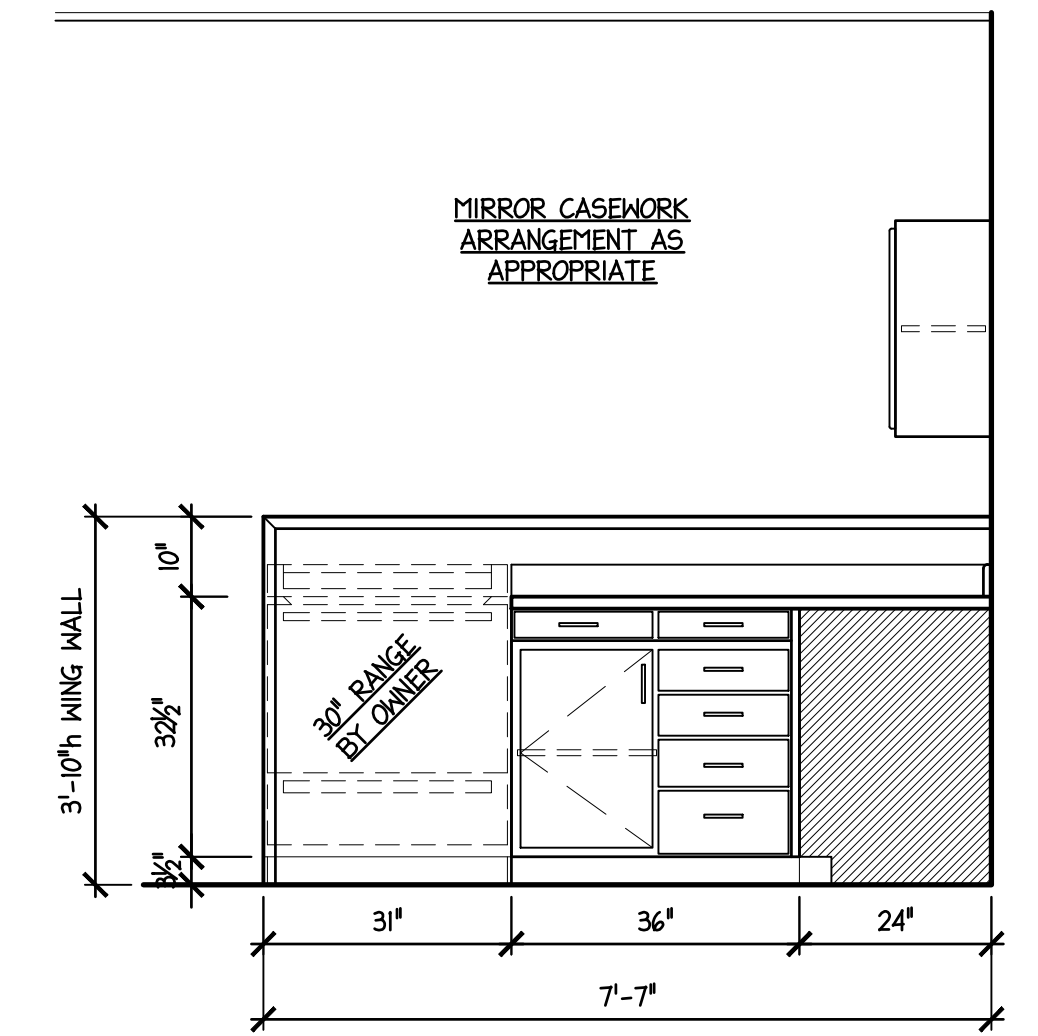
A NORTH CASEWORK ELEVATION
A-2



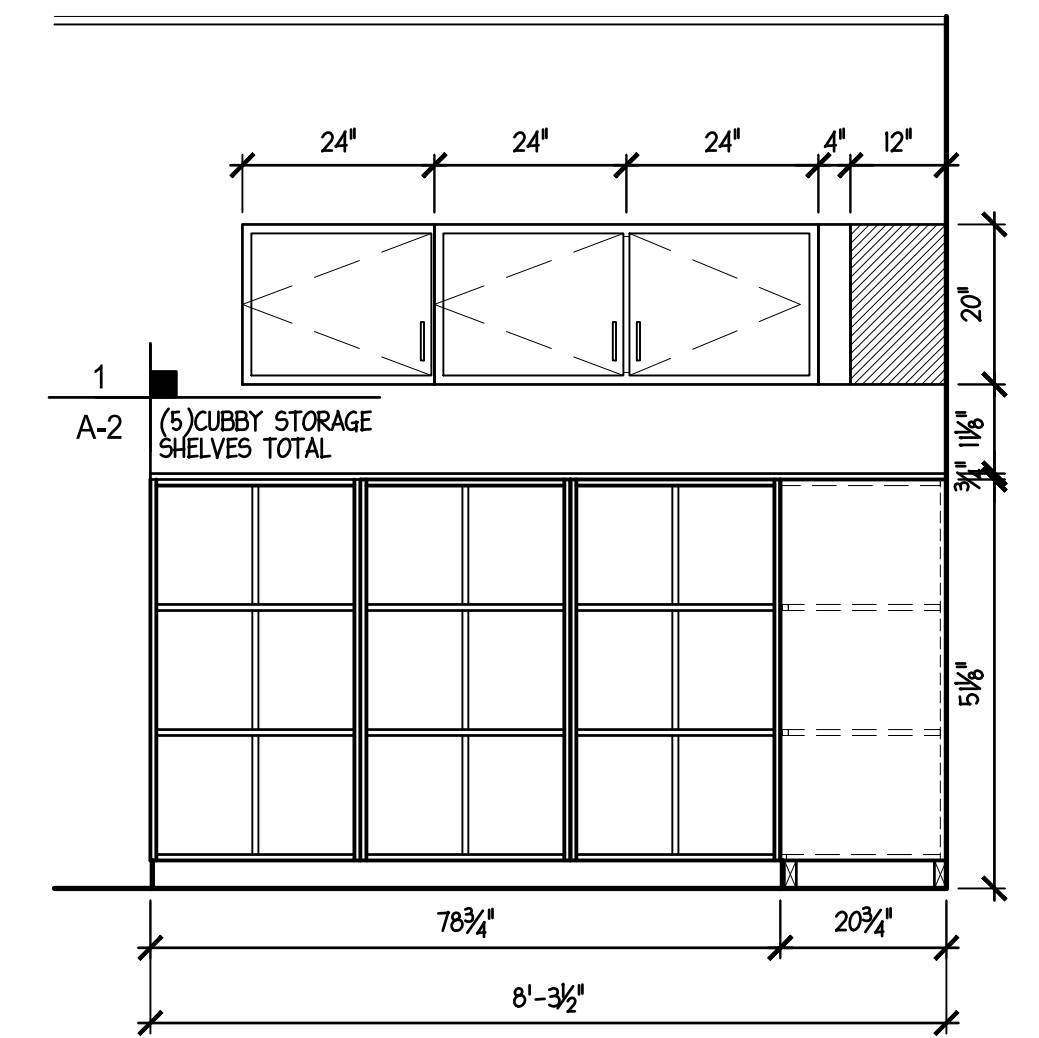
C TEACHER DEMONSTRATION ISLAND CASEWORK ELEVATION
A-2



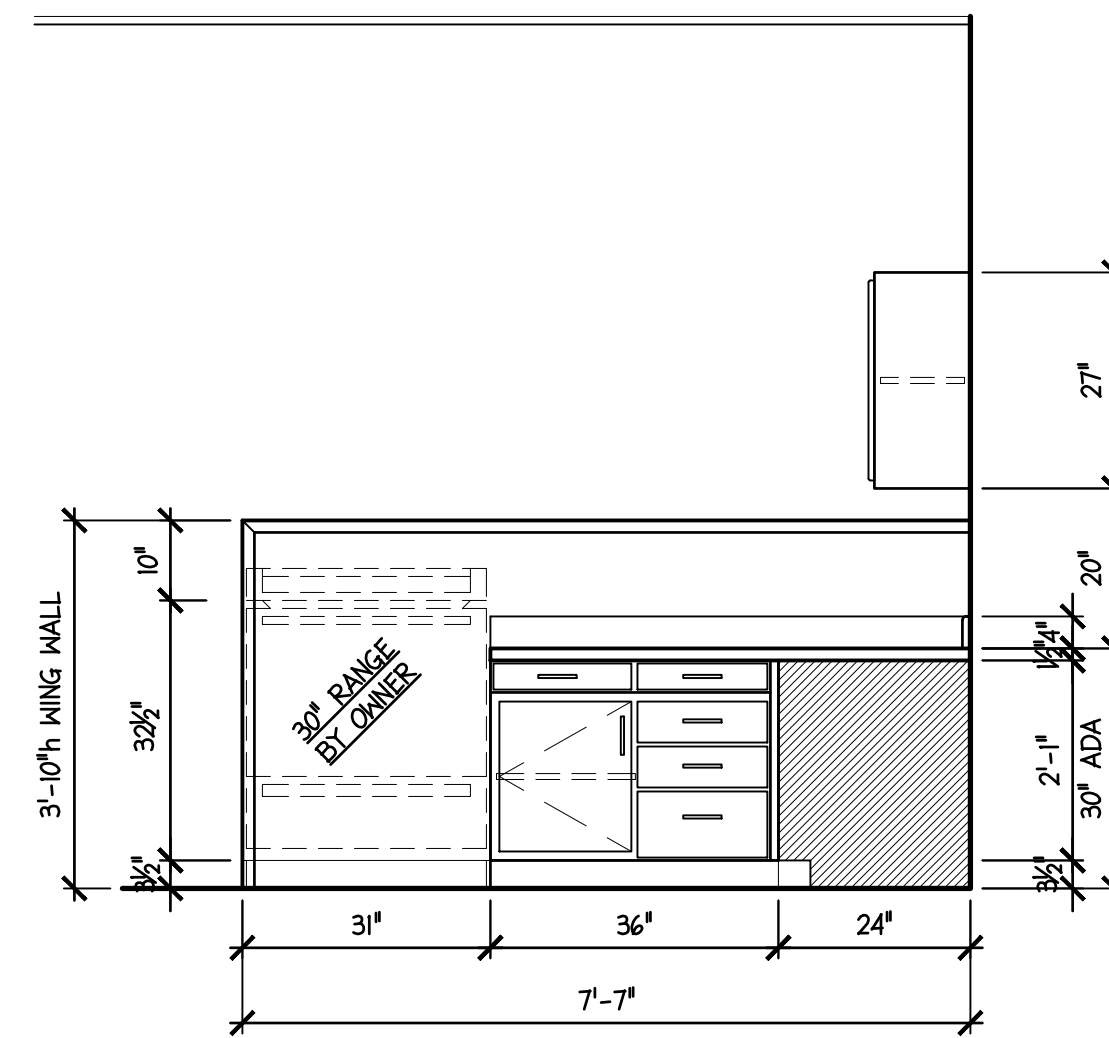
B SOUTH CASEWORK ELEVATION
A-2



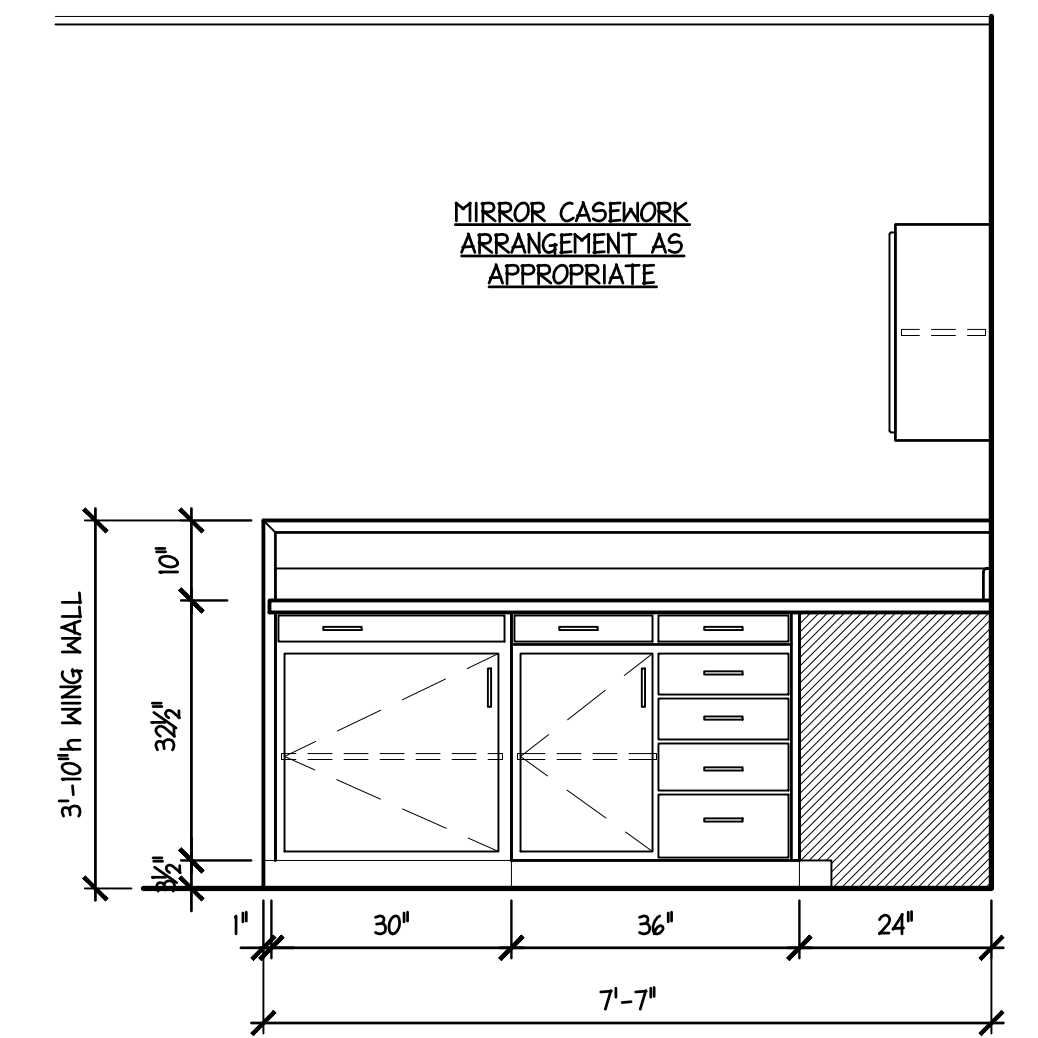
D WING WALL RANGE CASEWORK ELEVATION
A-2



E WEST CASEWORK ELEVATION
A-2



F WING WALL ADA CASEWORK ELEVATION
A-2



G WING WALL NON-RANGE CASEWORK ELEVATION
A-2

A-G
A-2
ELEVATION CASEWORK ELEVATIONS
SCALE: 1/2" = 1'-0"
2400_A2.dwg

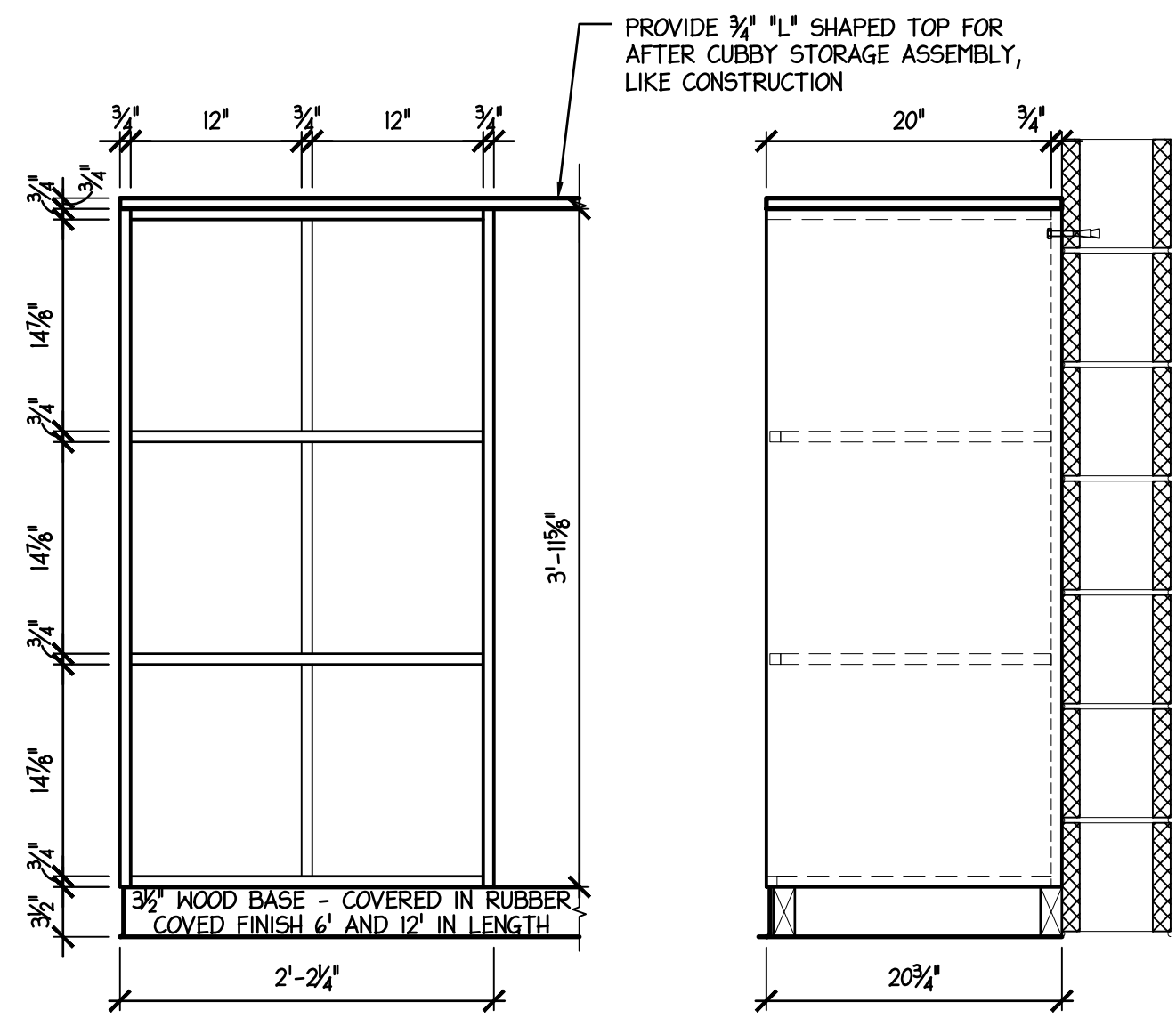
MIDDLETON ASSOCIATES, INC ARCHITECTS
1702 W. College Ave. Suite E Normal, IL 61761-2793
p: 309.452.1271 f: 309.454.8049
middletonassociates.net

PARKSIDE JUNIOR HIGH SCHOOL FACS RM155 REMODEL
101 Parkside Road - Normal, IL 61761
for McLEAN COUNTY UNIT DISTRICT NO.5
Unit District Office - 1809 West Hovey Avenue Normal, Illinois 61761-4339

ELEVATIONS

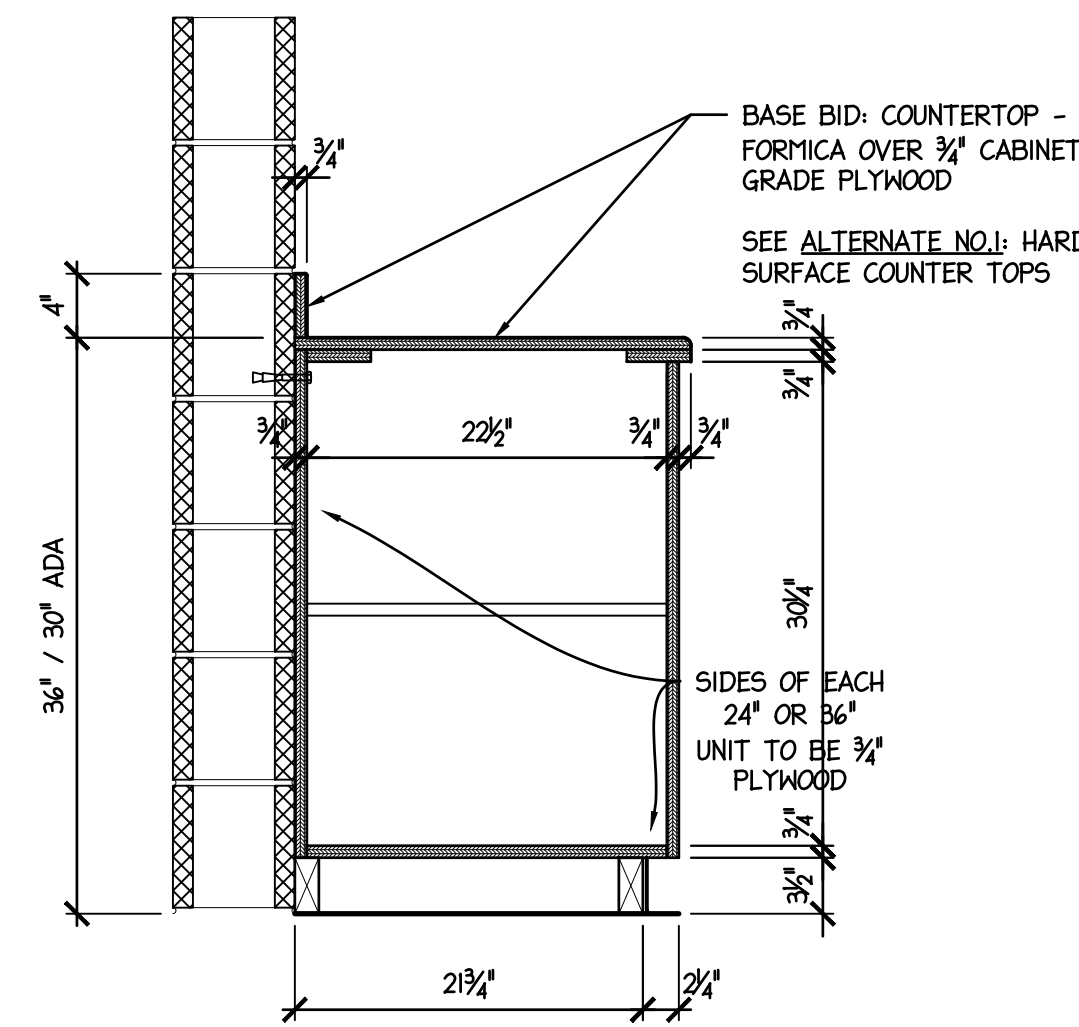
NO.	DATE	REVISIONS	REMARKS

PROJECT NO. 24202318
ISSUE DATE MAY 8, 2020
SHEET A-2
OF 5 SHEETS

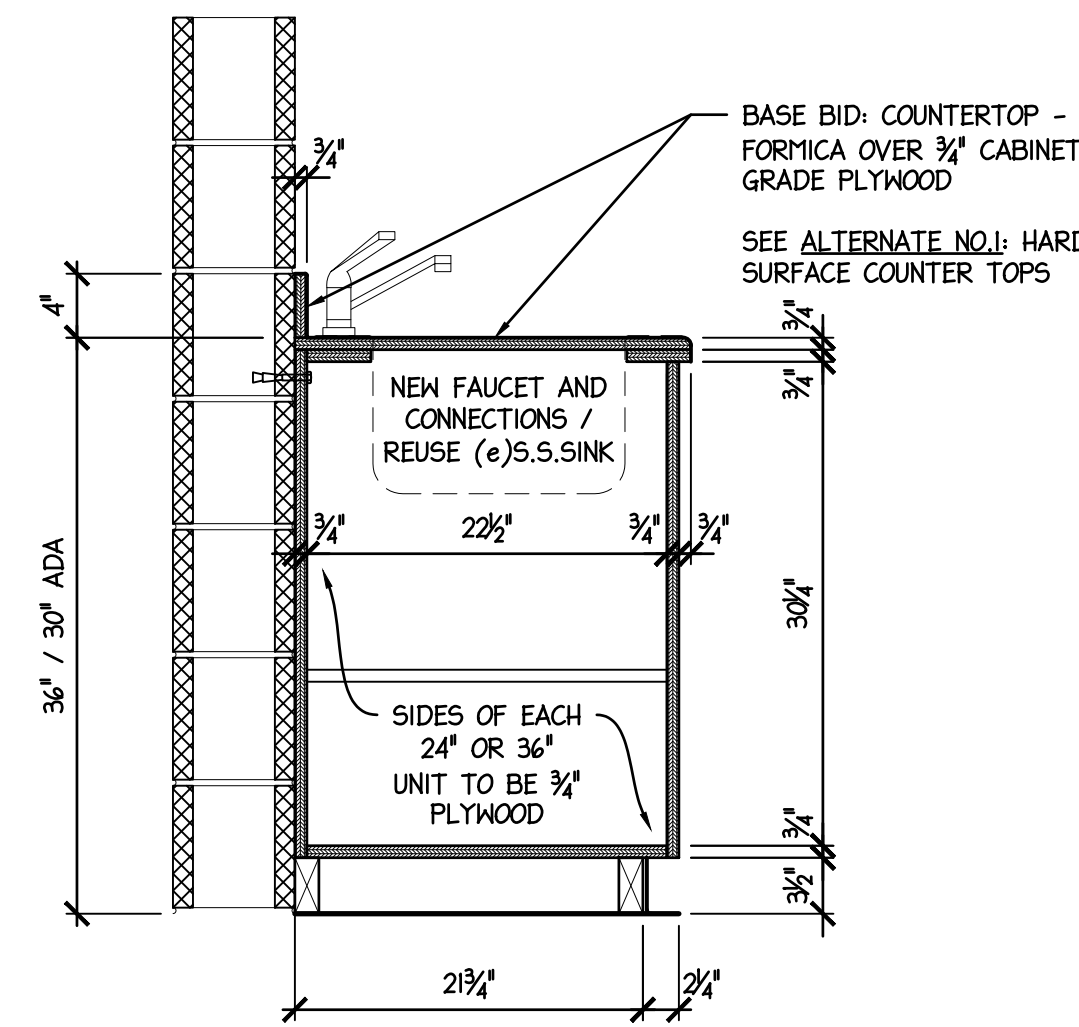


NOTE:
(5) CUBBY STORAGE UNITS REQUIRED
LOCATIONS AS SHOWN ON PLAN SHEET A-1

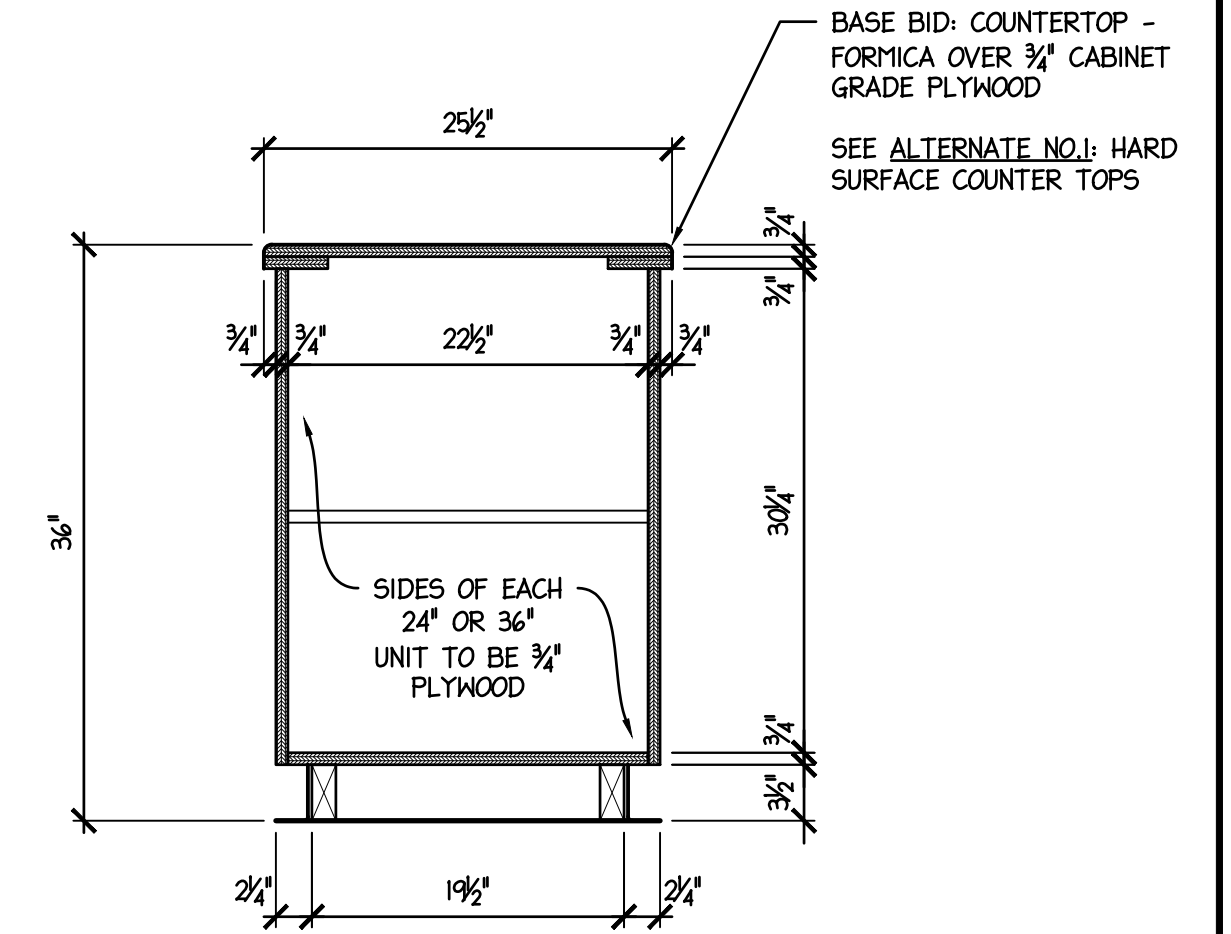
1 CUBBY STORAGE DETAIL
A-2.1 SCALE: 1" = 1'-0" 2402_A2.1.dwg



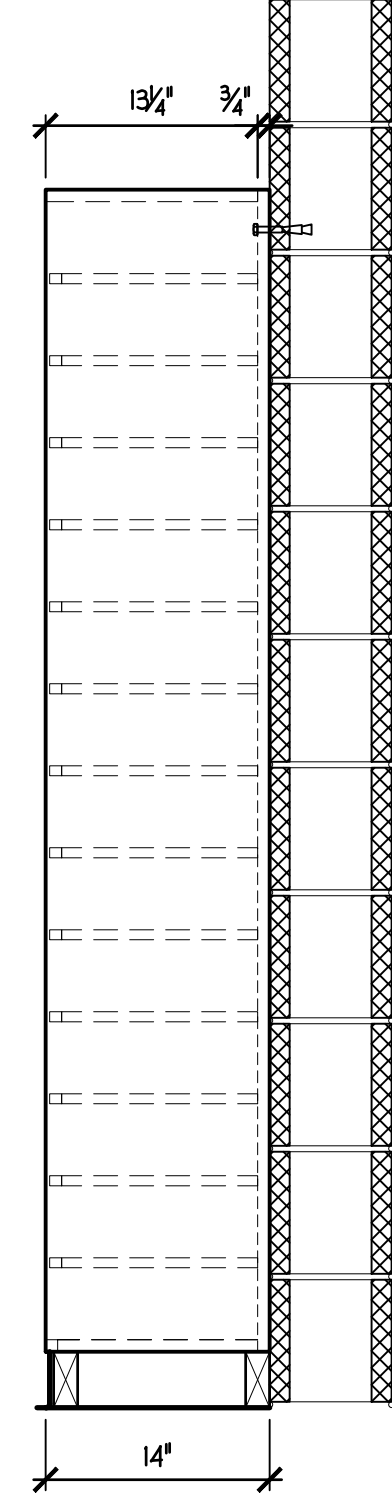
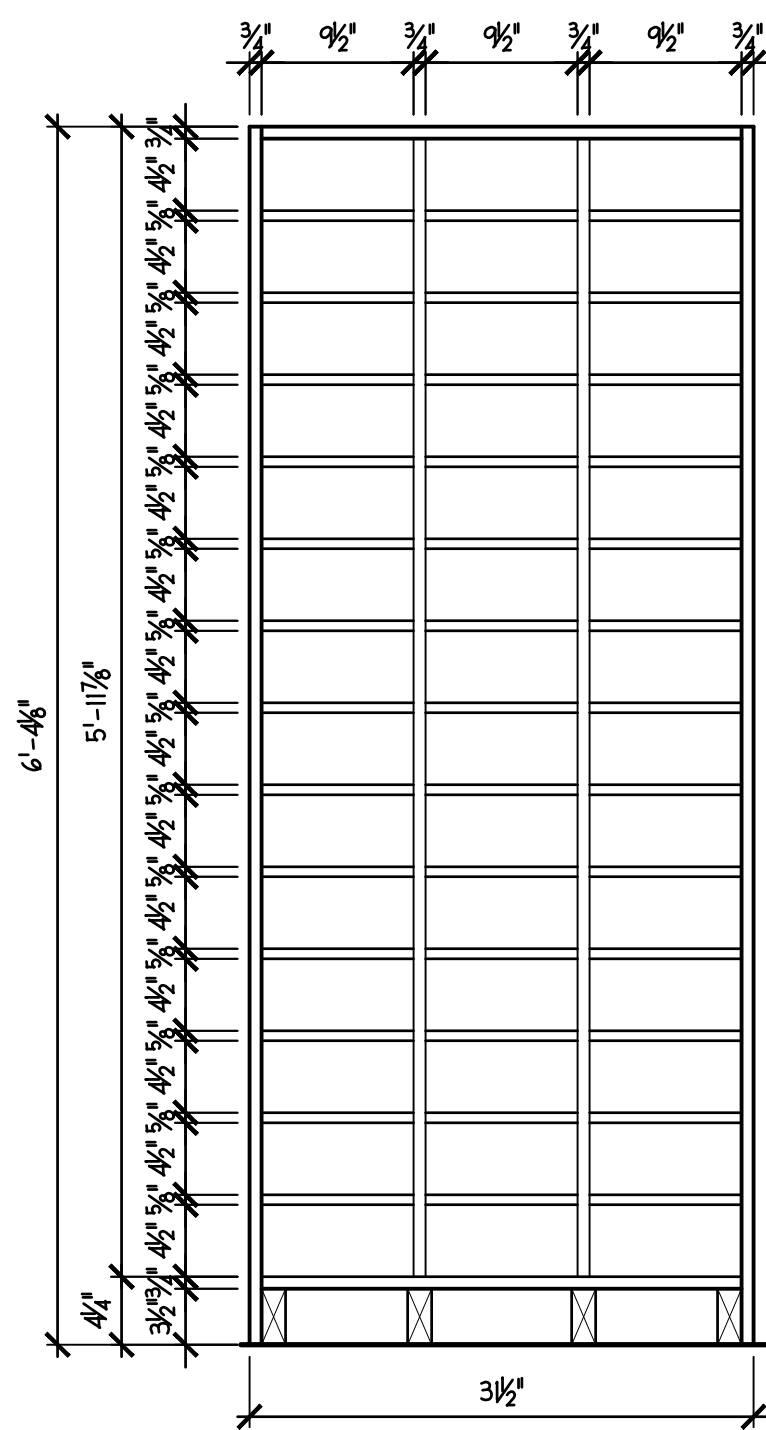
2 BASE CABINET SECTION
A-2.1 SCALE: 1" = 1'-0" 2402_A2.1.dwg



3 SINK BASE SECTION
A-2.1 SCALE: 1" = 1'-0" 2402_A2.1.dwg

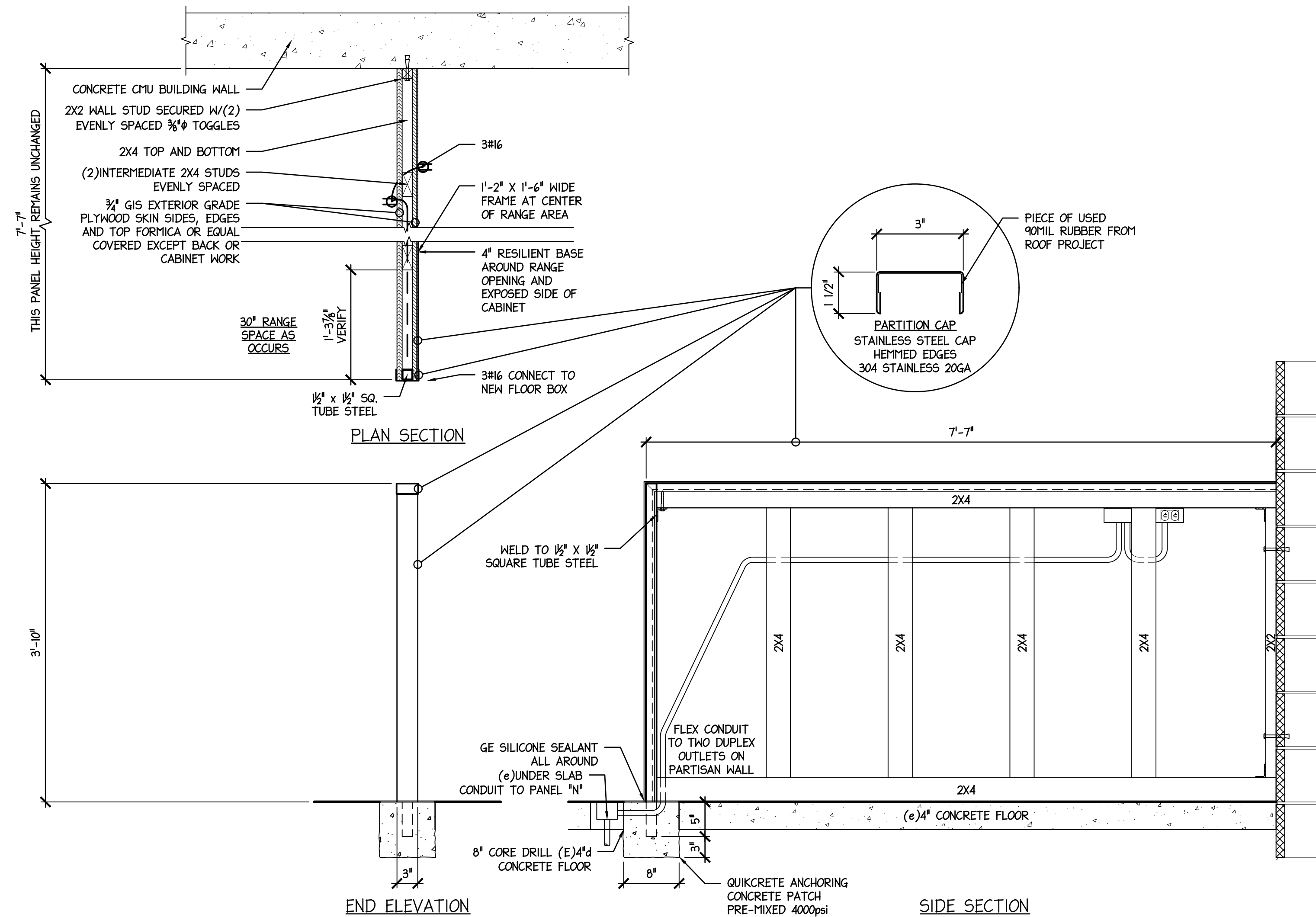


4 TEACHER DEMONSTRATION ISLAND BASE SECTION
A-2.1 SCALE: 1" = 1'-0" 2402_A2.1.dwg



NOTE:
(3) STORAGE UNITS REQUIRED AT (14) ROWS / (3) COLUMNS = (126) INDIVIDUAL SPACES,
LOCATIONS AS SHOWN ON PLAN SHEET A-1

5 STORAGE CABINET DETAIL
A-2.1 SCALE: 1" = 1'-0" 2402_A2.1.dwg



6 PARTITION DETAIL
A-2.1 SCALE: 1" = 1'-0" 2402_A2.1.dwg

1702 W. College Ave.
Suite E
Normal, IL 61761-2793
P: 309.452.1271
F: 309.454.8049
middletonassociates.net

MIDDLETON ASSOCIATES ARCHITECTS

THE CONTRACTOR SHALL VERIFY CONDITIONS & DIMENSIONS ON THE JOB. INFORMATION SHOWN ON ANY PART OF THE DRAWINGS SHALL APPLY TO SIMILAR CONDITIONS AT OTHER LOCATIONS IN THE WORK UNLESS SET FORTH OTHERWISE

PARKSIDE JUNIOR HIGH SCHOOL FACS RM155 REMODEL
101 Parkside Road - Normal, IL 61761
for McLEAN COUNTY UNIT DISTRICT NO.5
Unit District Office - 1809 West Hovey Avenue
Normal, Illinois 61761-4339

DETAILS

NO.	DATE	REVISIONS	REMARKS

PROJECT NO. 24202318
ISSUE DATE MAY 8, 2020
SHEET A-2.1
OF 5 SHEETS