

May 14, 2020

*MIDDLETON ASSOCIATES INCORPORATED
1702 W. COLLEGE AVE., SUITE E
NORMAL, IL 61761-2793
309/452-1271 FAX 309/454-8049*

**ADDENDUM NUMBER 2
TO THE DRAWINGS AND SPECIFICATIONS**

PROJECT: McLean County Unit District No. 5 Parkside Junior High School – F.A.C.S. Room
155 Remodel

FOR: McLean Co. Unit District No. 5
1809 W. Hovey Ave.
Normal, IL 61761

A/E PROJECT NO: 24202318

ISSUE DATE: May 8, 2020

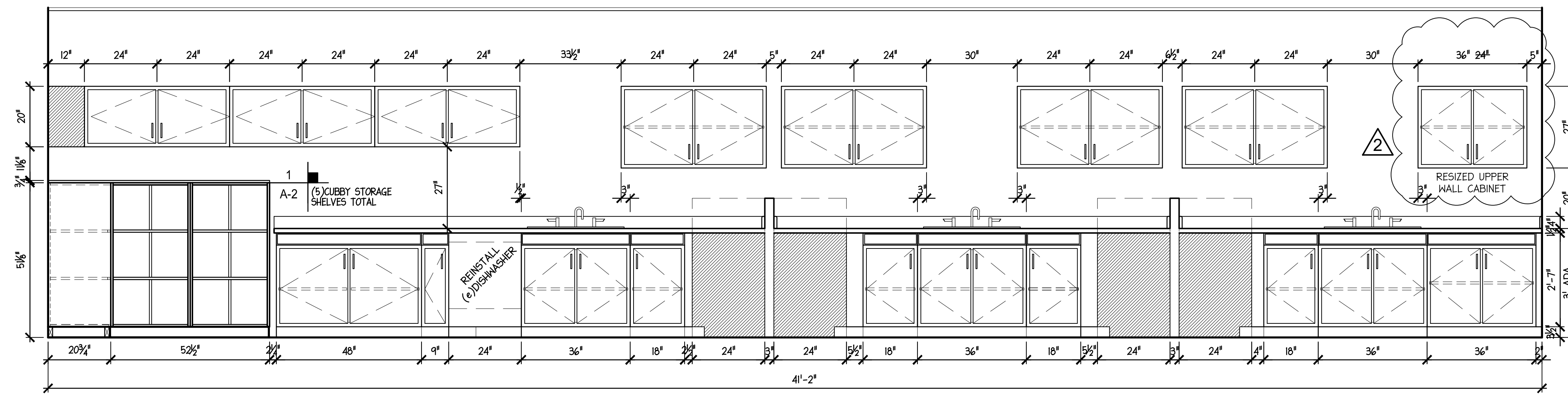
BID OPENING: Thursday, May 21, 2020, 1:30 p.m. prevailing time
Maintenance Office, 1999 Eagle Road, Normal, IL 61761

THIS ADDENDUM DOES NOT CHANGE THE BID DATE

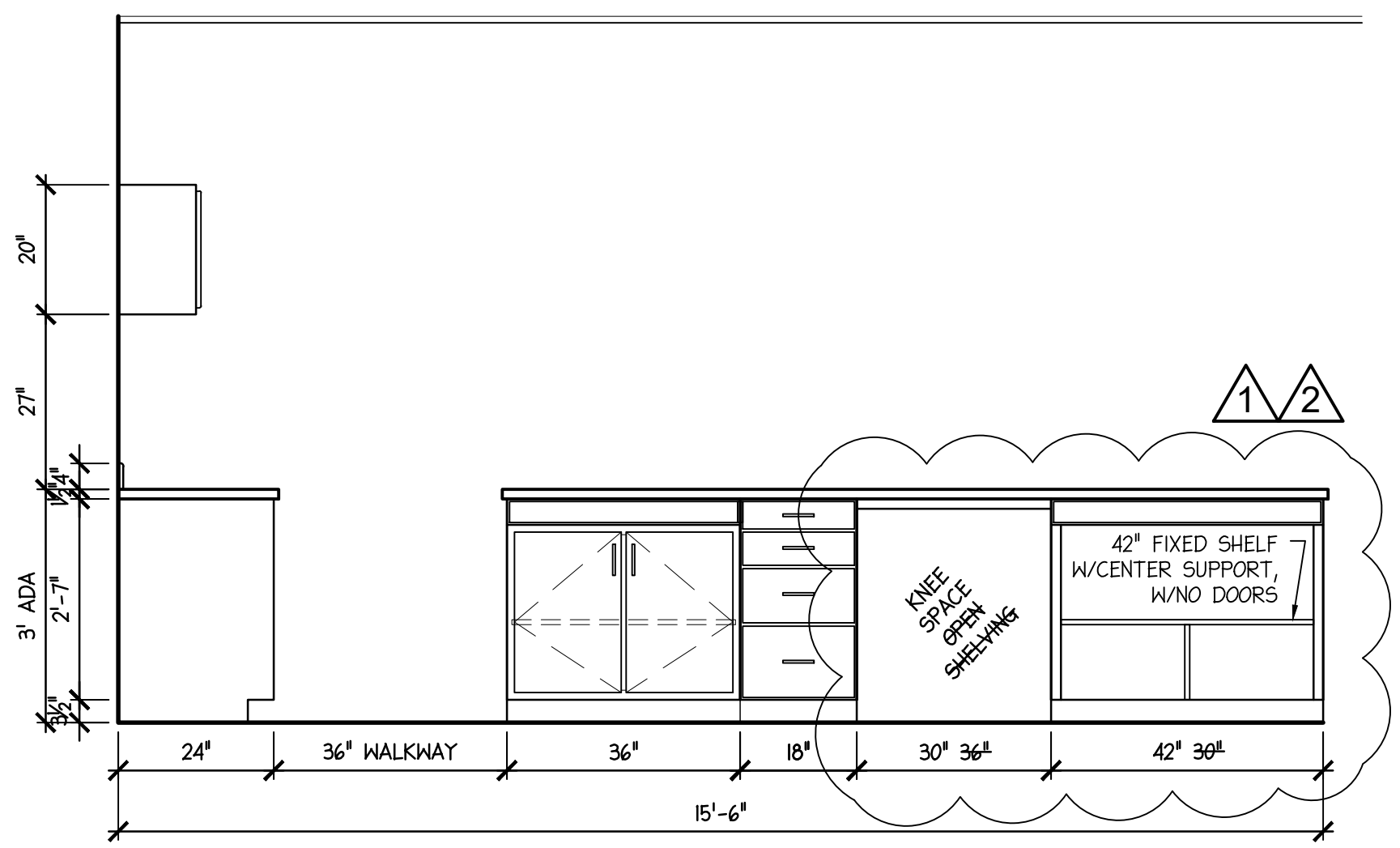
Upon receipt of this ADDENDUM, insert same into the documents, which were issued to you. Hereafter, said ADDENDUM shall be as much a part of the said documents as though originally set forth therein. **THIS ADDENDUM DOES NOT CHANGE THE BID DATE.**

5. **TO THE DRAWINGS:** Sheet A-1; Demo Plan: The four (4) divider units form a “T” in plan. The entire “T” shall be removed. Also, the demolition of all base floor mounted cabinets and the dividers “T” structure shall be removed by the ACM floor removal contractor and will be paid separately by Unit 5. Wall mounted cabinets will be removed under this contract and included in the Base Bid.
6. **TO THE DRAWINGS:** Sheet A-2; Elevation C/A-2, Teacher Demonstration Island Casework Elevation: The open shelving unit shall become a 30” opening with the counter top extending continuously, but no raised floor (floor will be covered by LVT). The present 30” cabinet will become a 42” cabinet with the cabinet featuring a 4” elevated floor of laminate and no doors. The upper cabinets on far east end of room shown in details North and South Casework Elevations A-B/A-2 shall change from 24” cabinets to 36” cabinets. The (2)24” or 48” upper cabinet on west end of detail B/A-2 is not required in this contract.
7. **TO THE SPECIFICATIONS:** Section 09670 Resilient LVT Flooring Paragraph 2.1.A.4: The owner has chosen Earthcuts Braco NA332 Putty 12”X24”.

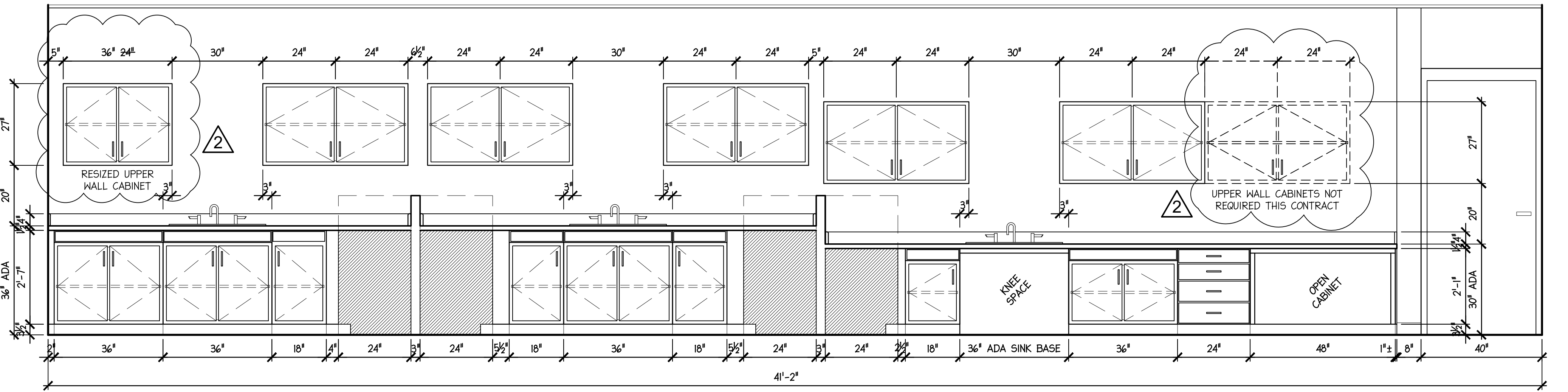
END ADDENDUM NO. 2



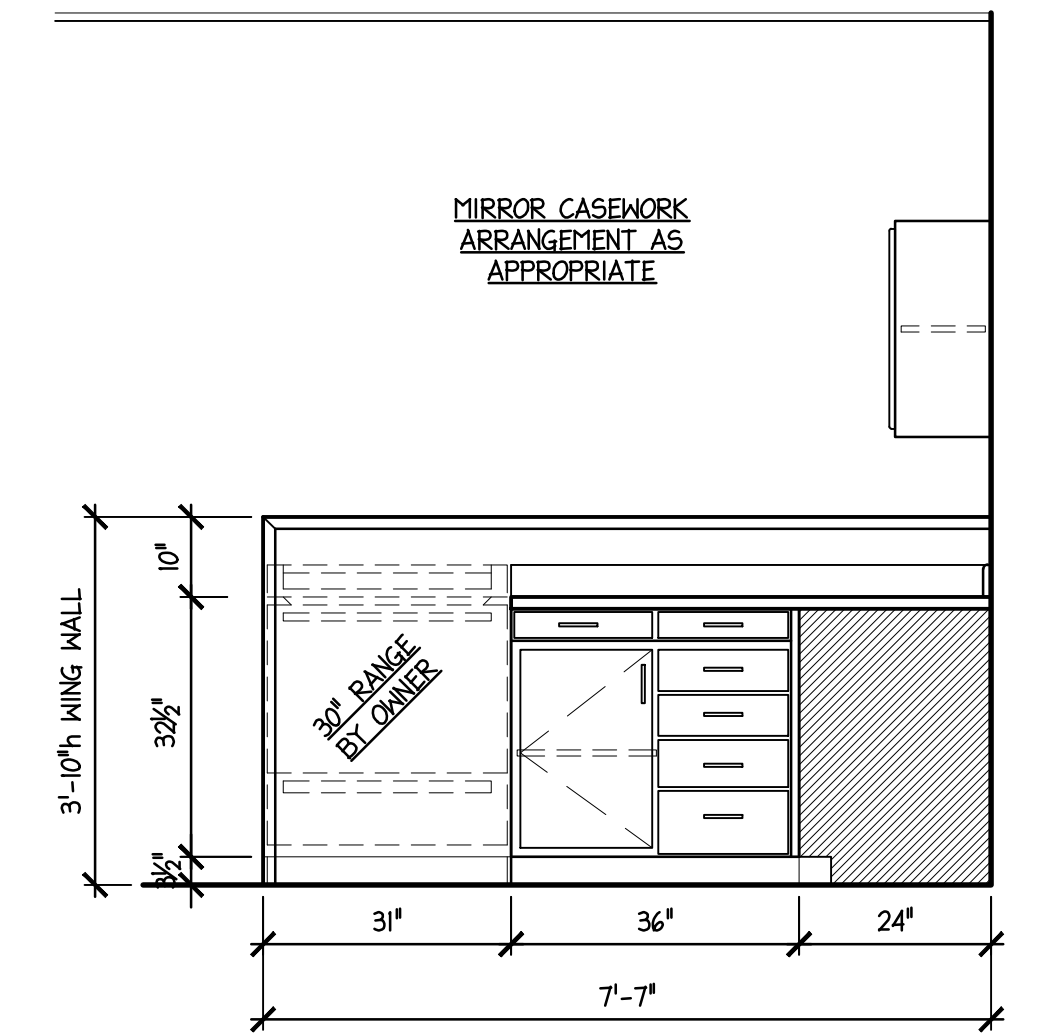
A NORTH CASEWORK ELEVATION
A-2



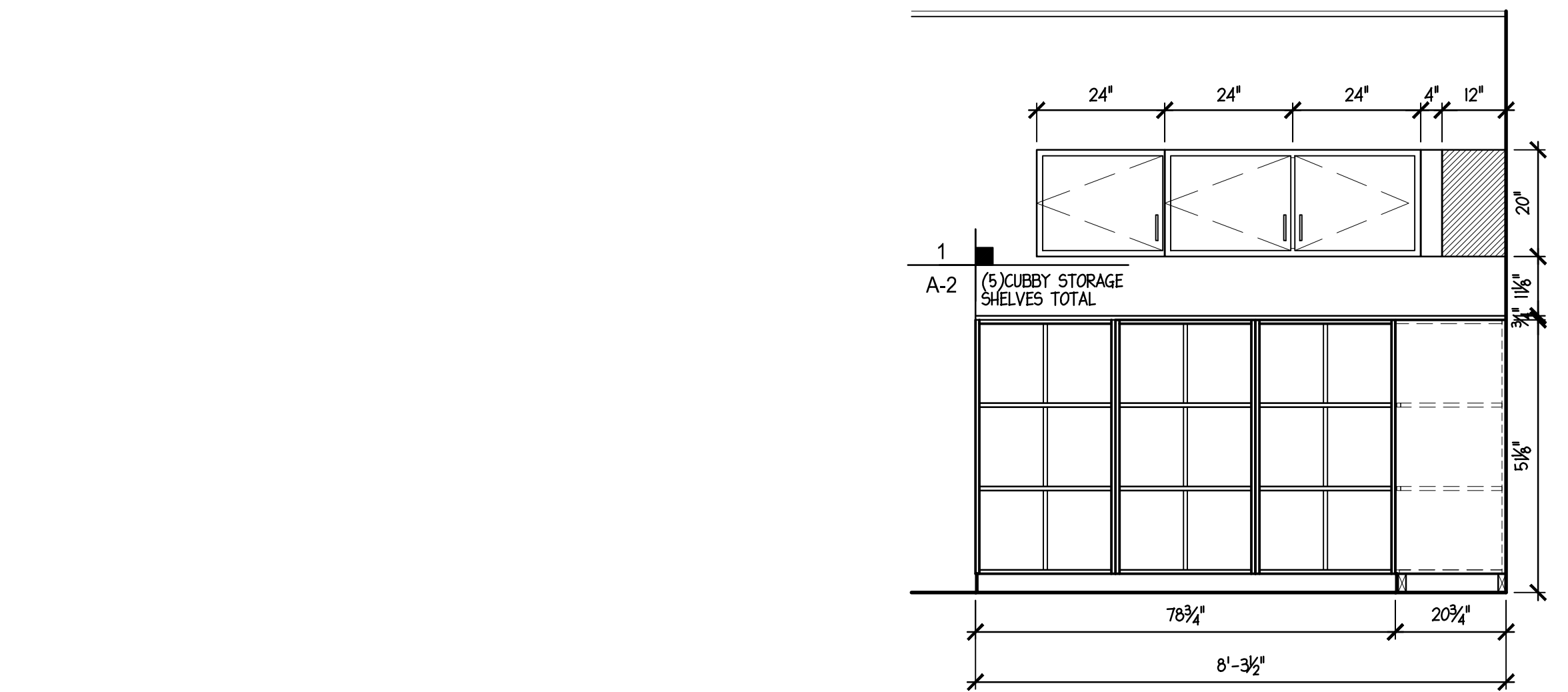
C TEACHER DEMONSTRATION ISLAND CASEWORK ELEVATION
A-2



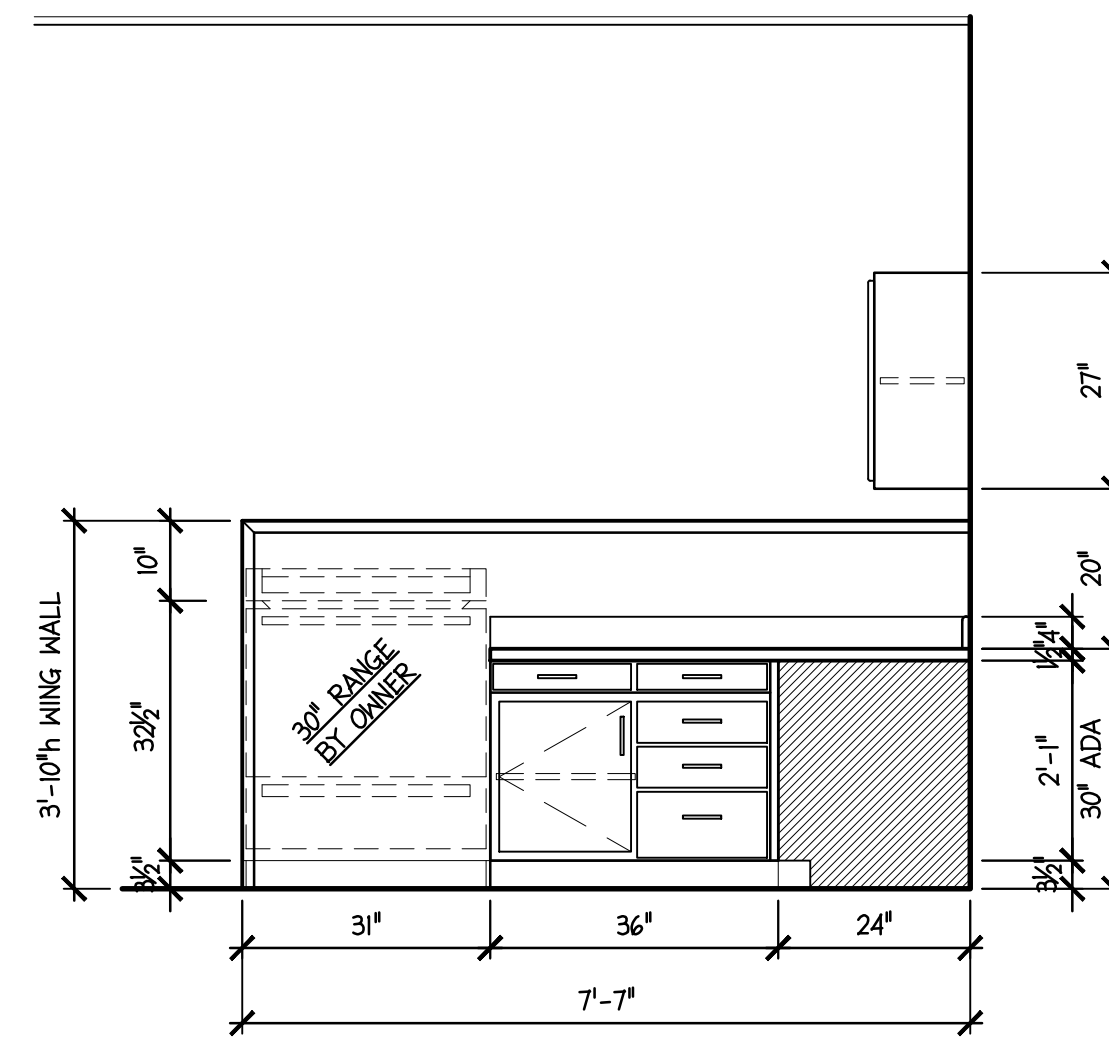
B SOUTH CASEWORK ELEVATION
A-2



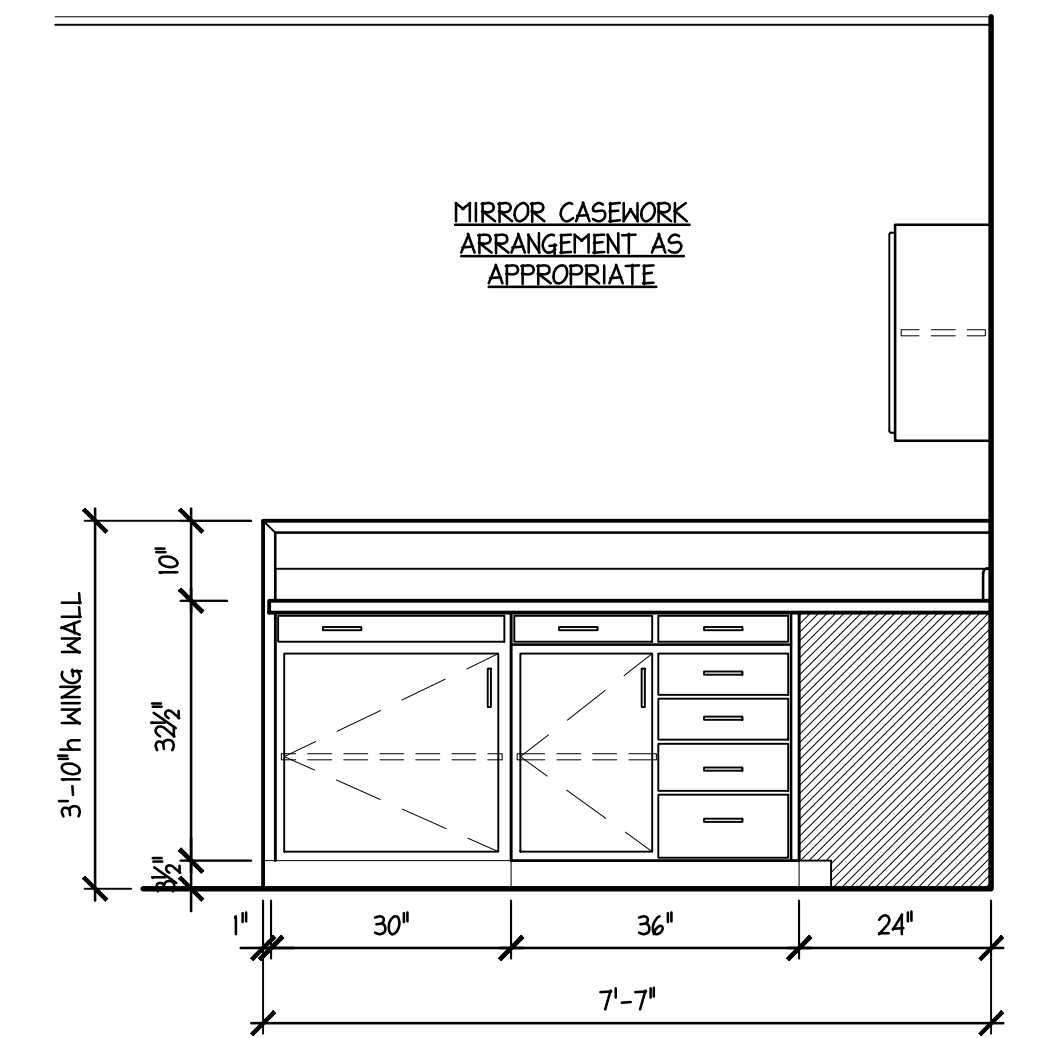
D WING WALL RANGE CASEWORK ELEVATION
A-2



E WEST CASEWORK ELEVATION
A-2



F WING WALL ADA CASEWORK ELEVATION
A-2



G WING WALL NON-RANGE CASEWORK ELEVATION
A-2

A-G ELEVATION CASEWORK ELEVATIONS
SCALE: 1/2" = 1'-0"
240_A2.dwg

MIDDLETON ASSOCIATES, INC ARCHITECTS
1702 W. College Ave.
Suite E
Normal, IL 61761-2793
p: 309.452.1271
f: 309.454.8049
middletonassociates.net

PARKSIDE JUNIOR HIGH SCHOOL FACS RM155 REMODEL
101 Parkside Road - Normal, IL 61761
for **McLEAN COUNTY UNIT DISTRICT NO.5**
Unit District Office - 1809 West Hovey Avenue
Normal, Illinois 61761-4339

ELEVATIONS

NO.	DATE	REVISIONS	REMARKS
1	05/11/2020	ADDENDUM NO.1	
2	05/12/2020	ADDENDUM NO.2	

PROJECT NO. 24202318
ISSUE DATE MAY 8, 2020
SHEET **A-2**
OF 5 SHEETS