

May 11, 2020

MIDDLETON ASSOCIATES INCORPORATED  
1702 W. COLLEGE AVE., SUITE E  
NORMAL, IL 61761-2793  
309/452-1271 FAX 309/454-8049

ADDENDUM NUMBER 1  
TO THE DRAWINGS AND SPECIFICATIONS

PROJECT: McLean County Unit District No. 5 Parkside Junior High School – F.A.C.S. Room  
155 Remodel

FOR: McLean Co. Unit District No. 5  
1809 W. Hovey Ave.  
Normal, IL 61761

A/E PROJECT NO: 24202318

ISSUE DATE: May 8, 2020

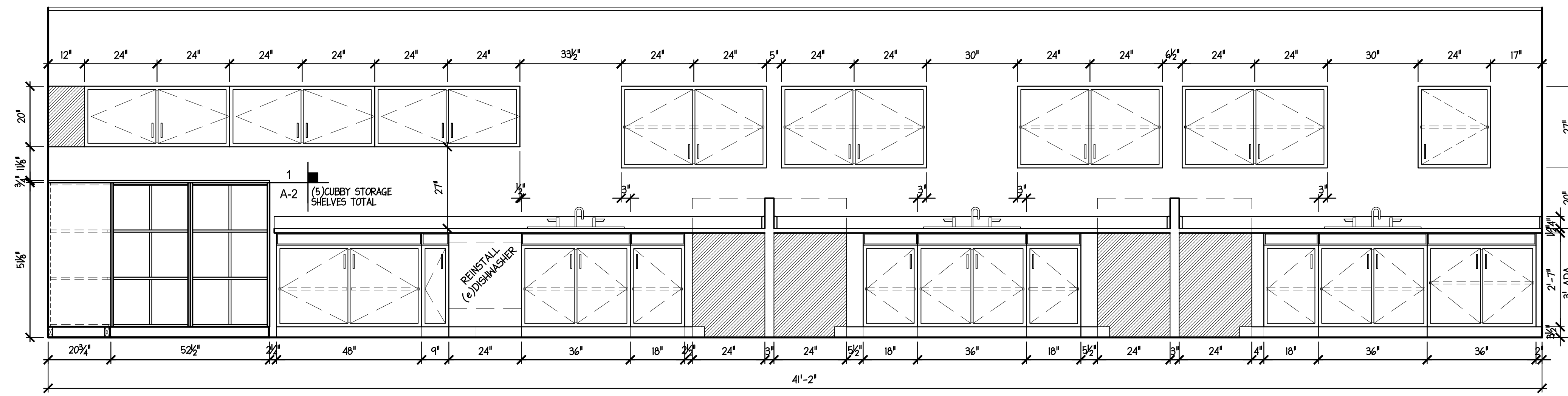
BID OPENING: Thursday, May 21, 2020, 1:30 p.m. prevailing time  
Maintenance Office, 1999 Eagle Road, Normal, IL 61761

**THIS ADDENDUM CHANGES THE BID DATE ON PUBLISHED BID CALL ONLY**

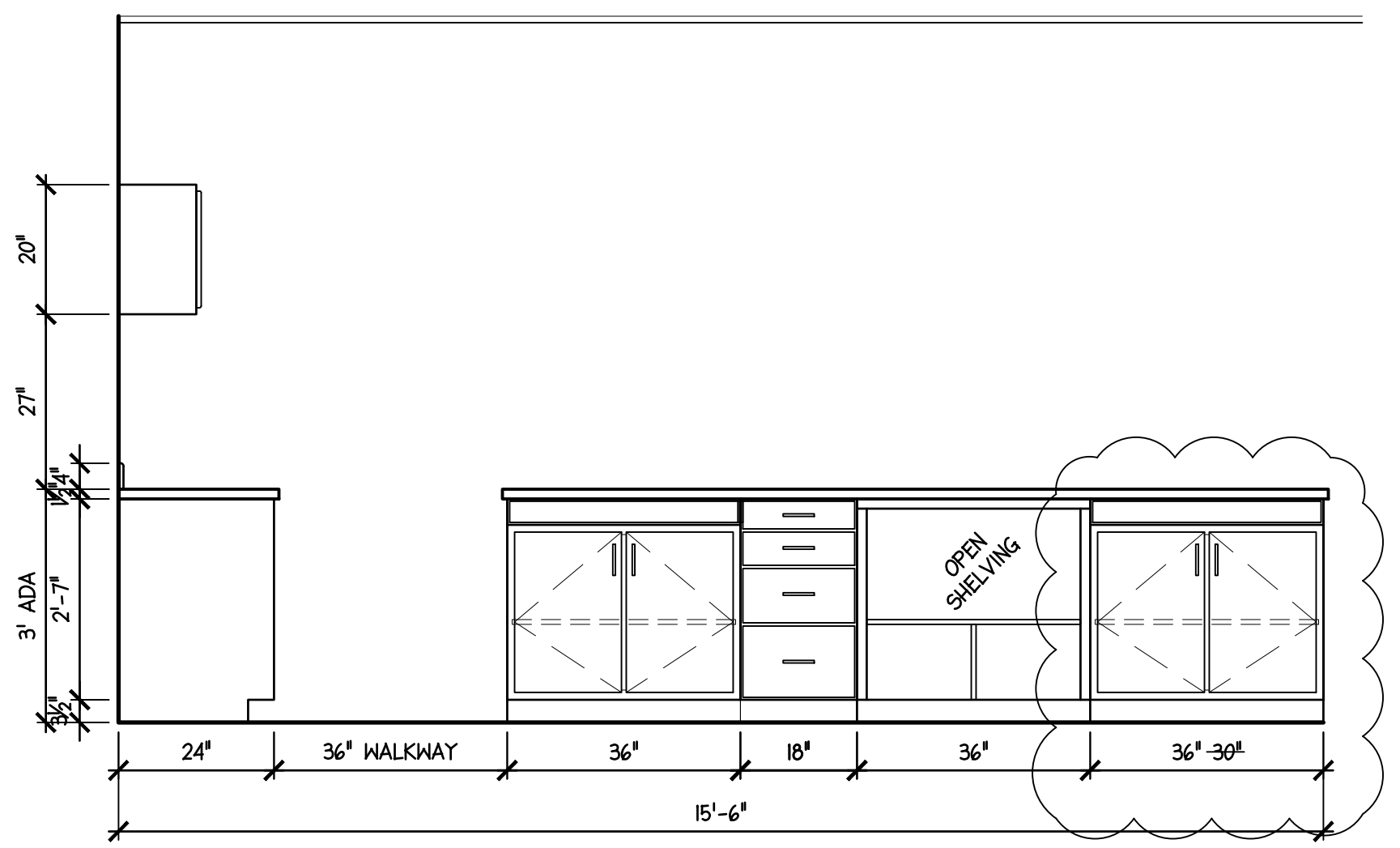
Upon receipt of this ADDENDUM, insert same into the documents, which were issued to you. Hereafter, said ADDENDUM shall be as much a part of the said documents as though originally set forth therein. **THIS ADDENDUM CHANGES THE BID DATE ON PUBLISHED BID CALL ONLY.**

1. TO THE PUBLISHED BID CALL: The bid date and time is May 21, 2020 at 1:30 p.m., prevailing time, as indicated in Specification Section 00030 and 00300.
2. TO THE SPECIFICATIONS: SECTION 00040; Instructions for Bidders: Add Section 1.41: Electronic Bidding; and to Section 1.6, add Paragraph C as follows: Submission of Bid, Section 00300 Proposal Form Submit with Live Signature Page 2 and Page 3: This will establish that the bids may be sent electronically prior to Thursday, May 21, 2020, 1:30 pm prevailing time to Joe Adelman, Director of Operations, [adelmanj@myunit5.org](mailto:adelmanj@myunit5.org) using a scanned Proposal Form Submitted with Live Signature Pages 2 and 3. Include a copy of the Bid Form showing the 5% Bid Bond and Signature. Include Specification Section 00307-1 Product Substitution Form if you bid a Substitution or include a comment to that "No Voluntary Substitution is Proposed". Electronically received Bids will be printed and read after Thursday, May 21, 2020, 1:30 pm prevailing time. Contractors are reminded they may come to the Warehouse and leave a bid in person and they may attend the bid opening. This is in compliance with Executive Order No.13 Section 9 from the Governor of Illinois: Include electronic bid to CC: Marty Hickman, Business Manager, [hickmanms@myunit5.org](mailto:hickmanms@myunit5.org).
3. TO THE DRAWINGS: Sheet A-2.1; Storage Cabinet Detail: Incorporate changes shown on attached drawing (note that there are colors required on cabinets).
4. TO THE DRAWINGS: Sheet A-2; Elevation C/A-2.

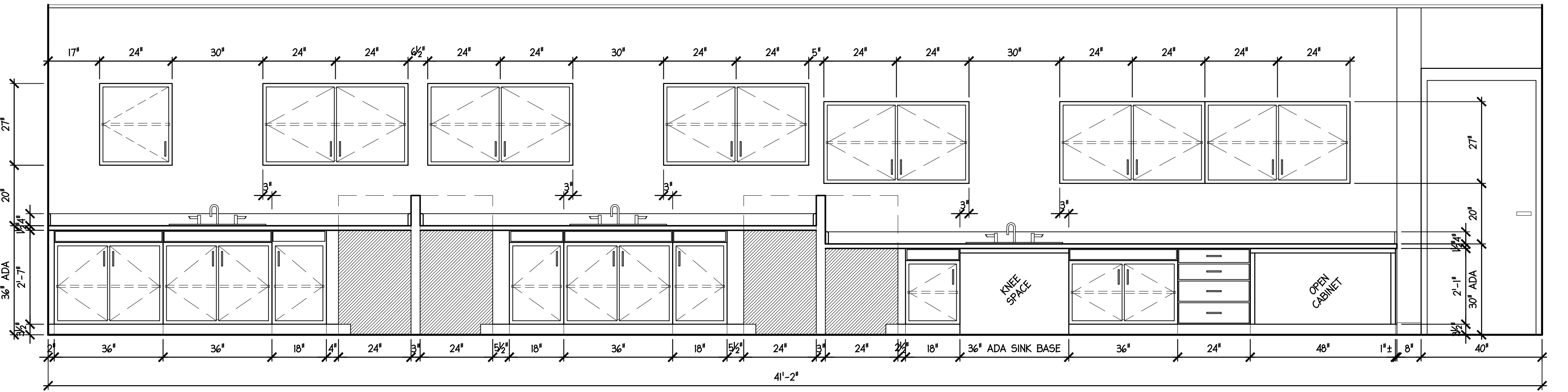
END ADDENDUM NO. 1



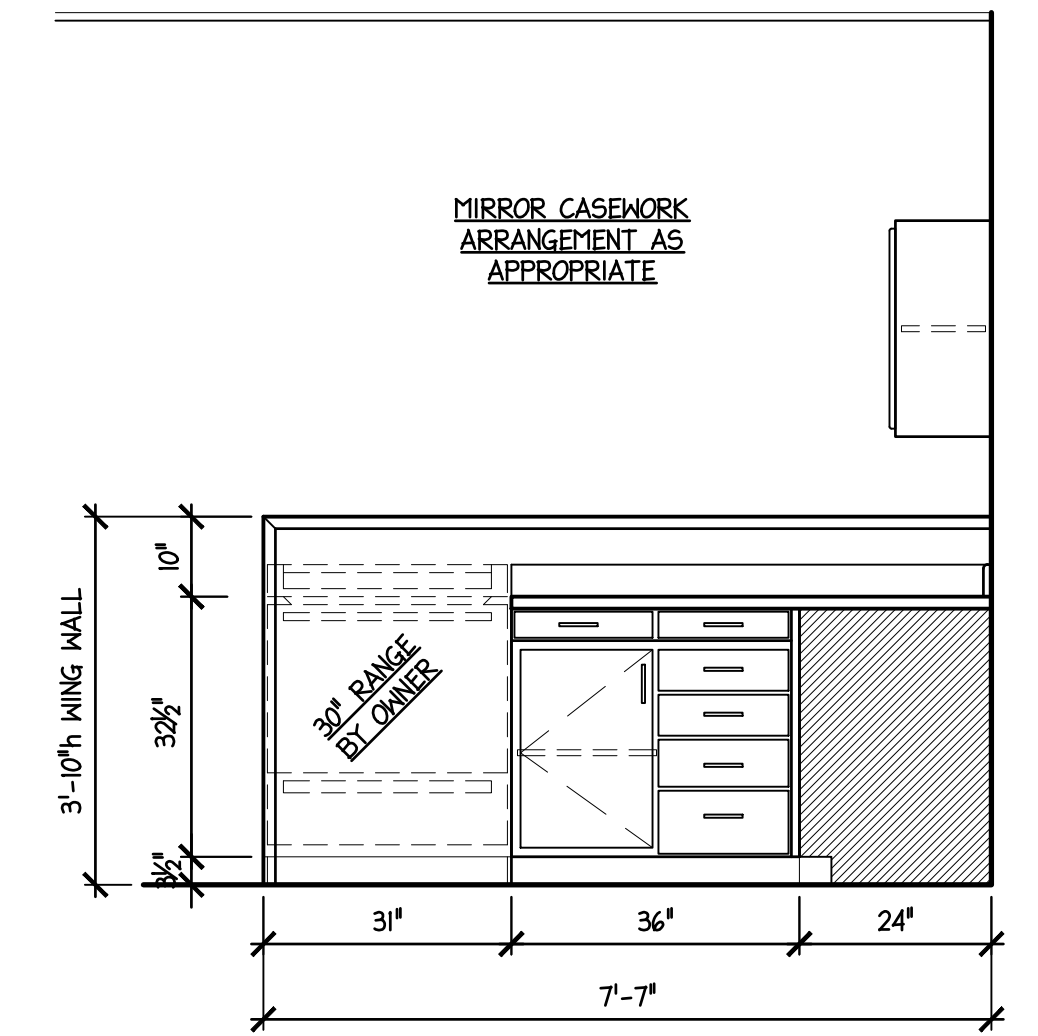
A NORTH CASEWORK ELEVATION  
A-2



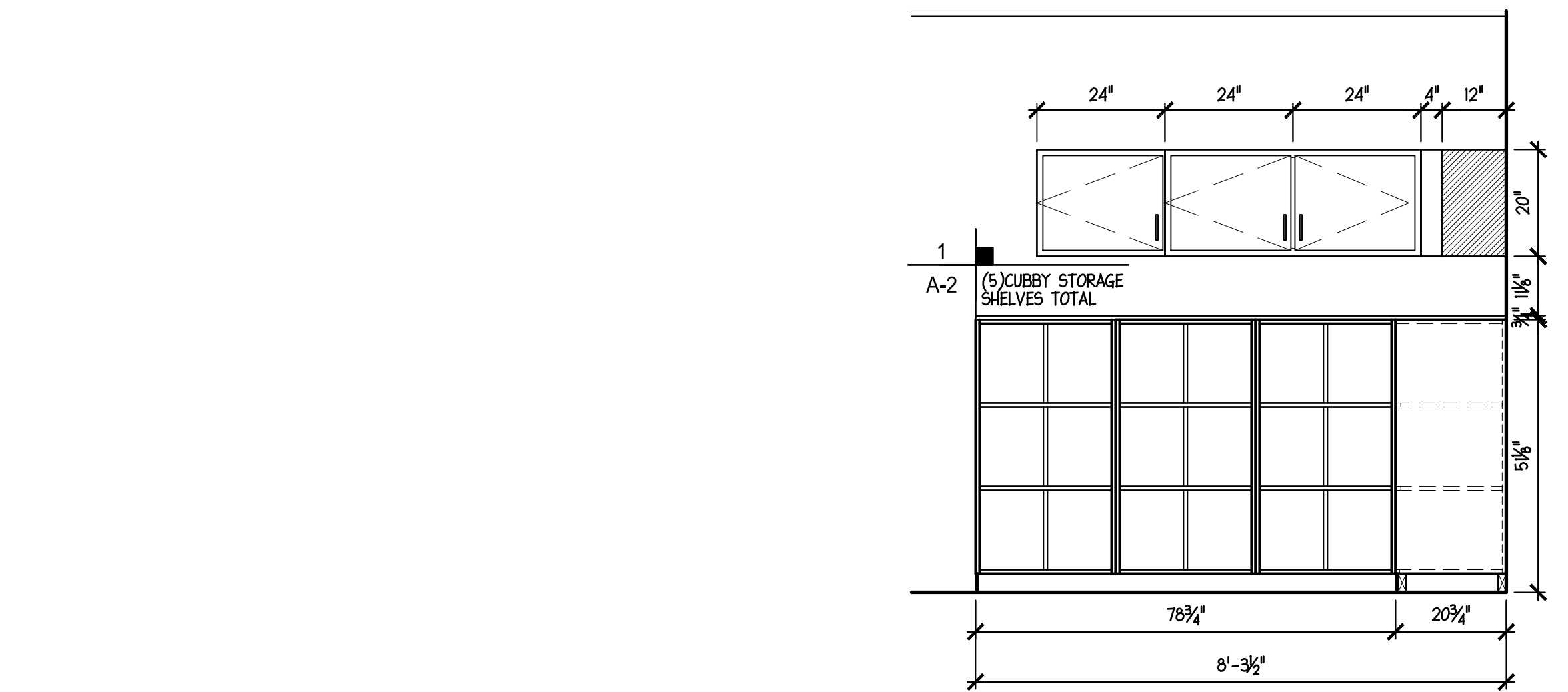
C TEACHER DEMONSTRATION ISLAND CASEWORK ELEVATION  
A-2



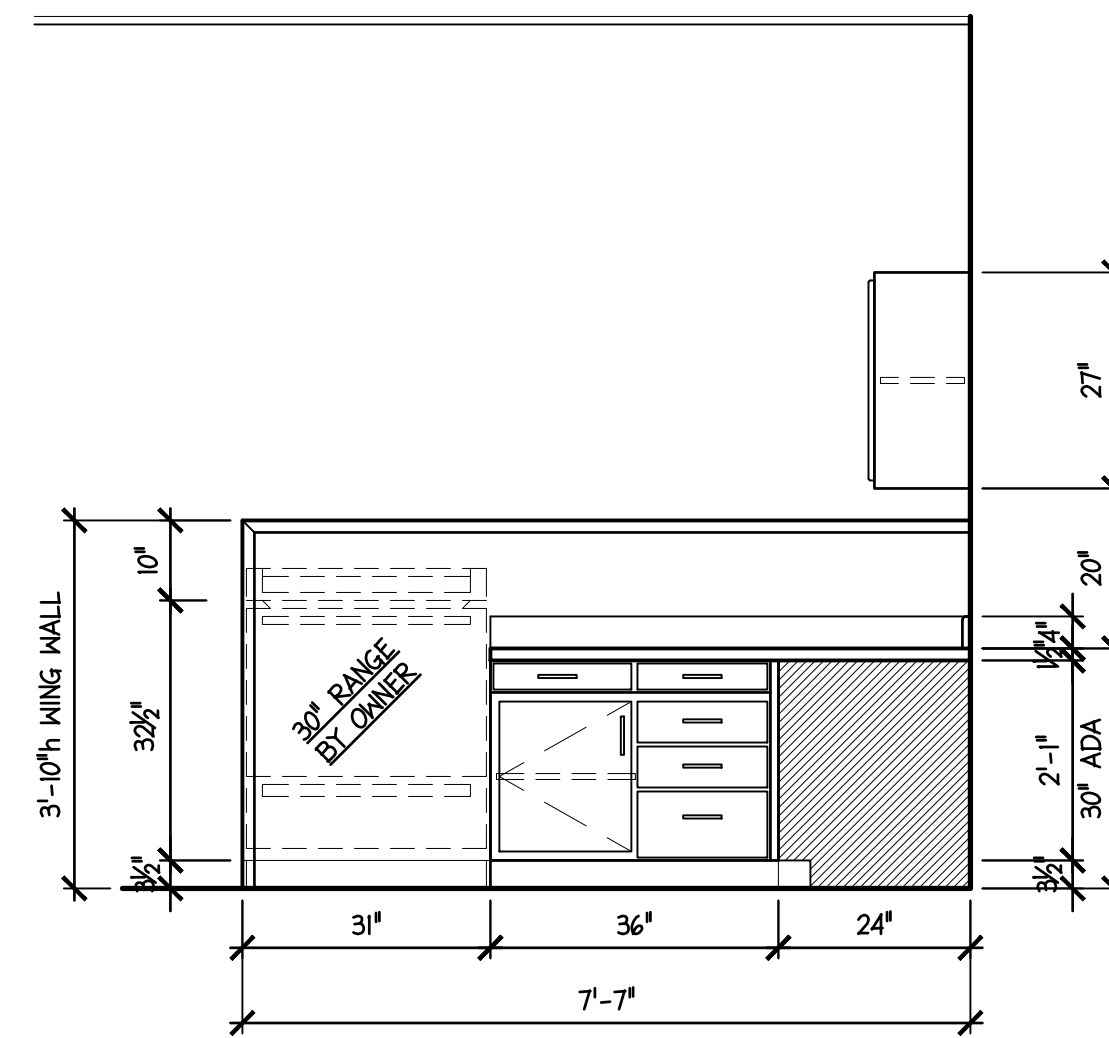
B SOUTH CASEWORK ELEVATION  
A-2



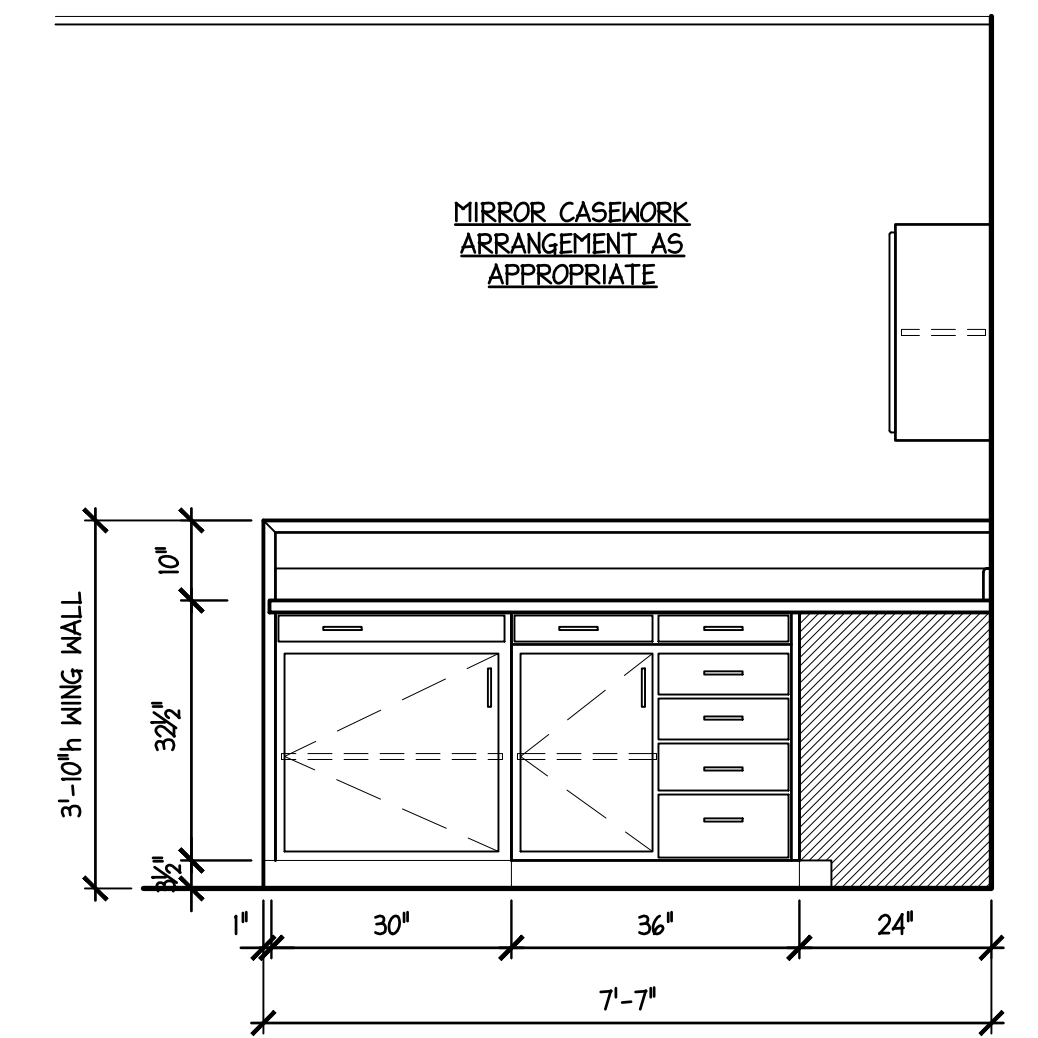
D WING WALL RANGE CASEWORK ELEVATION  
A-2



E WEST CASEWORK ELEVATION  
A-2



F WING WALL ADA CASEWORK ELEVATION  
A-2



G WING WALL NON-RANGE CASEWORK ELEVATION  
A-2

A-G  
A-2  
ELEVATION CASEWORK ELEVATIONS  
SCALE: 1/2" = 1'-0"  
2400\_A2.dwg

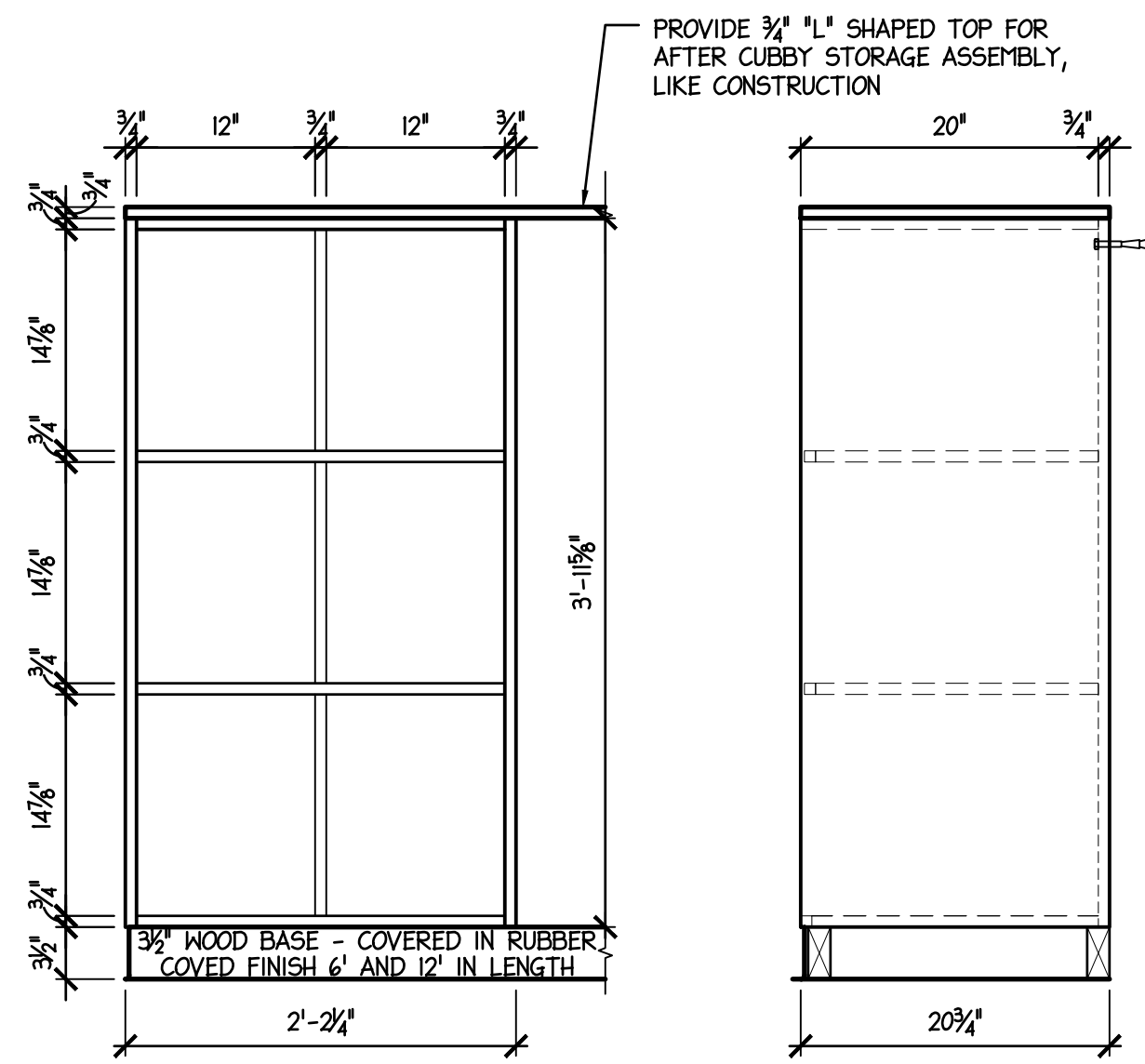
**MIDDLETON ASSOCIATES, INC ARCHITECTS**  
1702 W. College Ave.  
Suite E  
Normal, IL 61761-2793  
p: 309.452.1271  
f: 309.454.8049  
middletonassociates.net

**PARKSIDE JUNIOR HIGH SCHOOL FACS RM155 REMODEL**  
101 Parkside Road - Normal, IL 61761  
for **McLEAN COUNTY UNIT DISTRICT NO.5**  
Unit District Office - 1809 West Hovey Avenue  
Normal, Illinois 61761-4339

**ELEVATIONS**

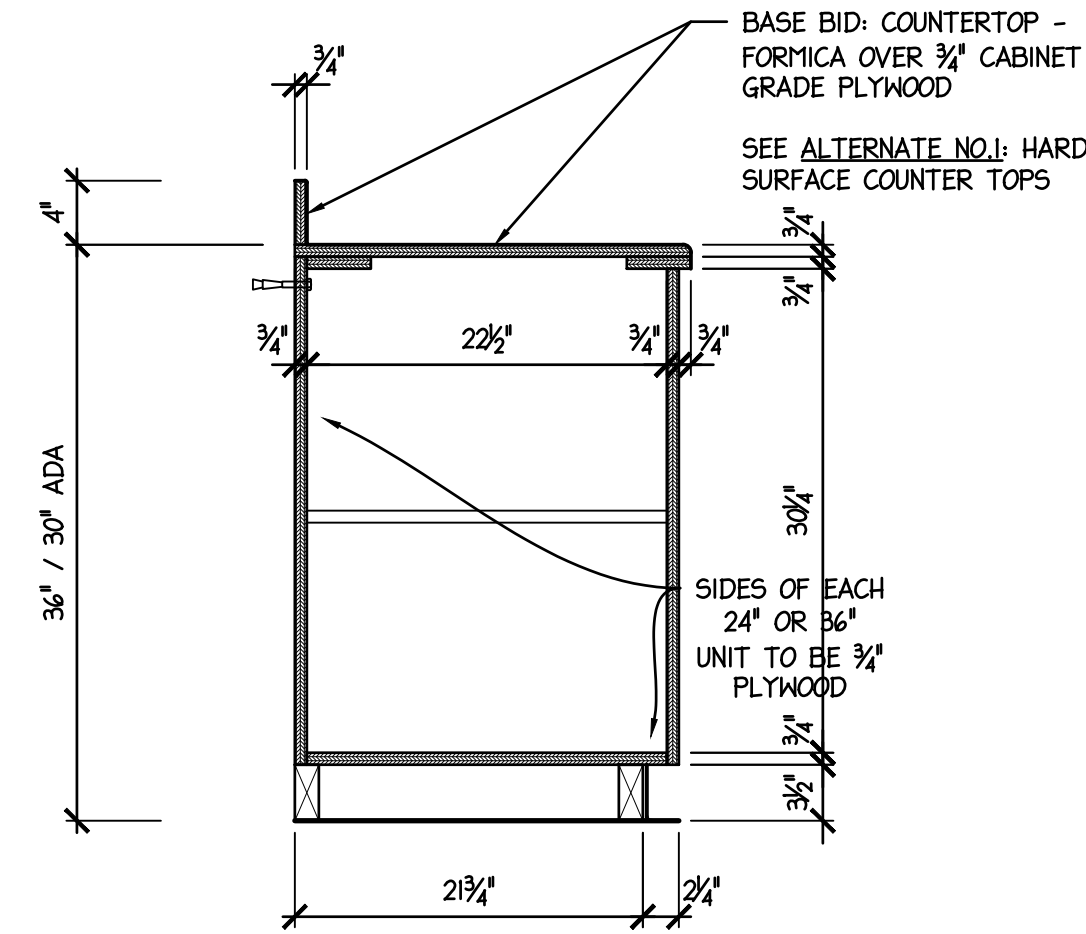
| NO. | DATE     | REVISIONS | REMARKS       |
|-----|----------|-----------|---------------|
| 1   | 5/7/2020 |           | ADDENDUM NO.1 |

PROJECT NO. 24202318  
ISSUE DATE MAY 8, 2020  
SHEET **A-2**  
OF 5 SHEETS

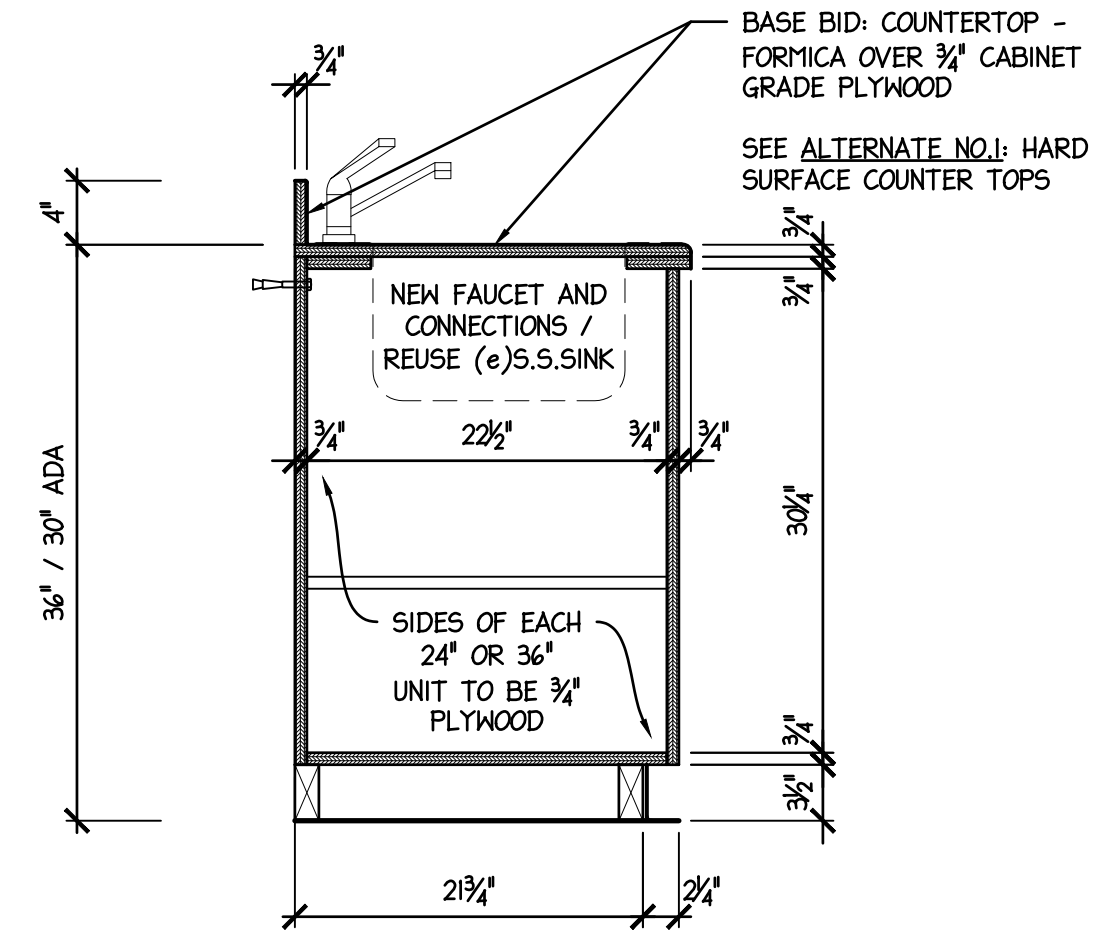


NOTE:  
(5) CUBBY STORAGE UNITS REQUIRED  
LOCATIONS AS SHOWN ON PLAN SHEET A-1

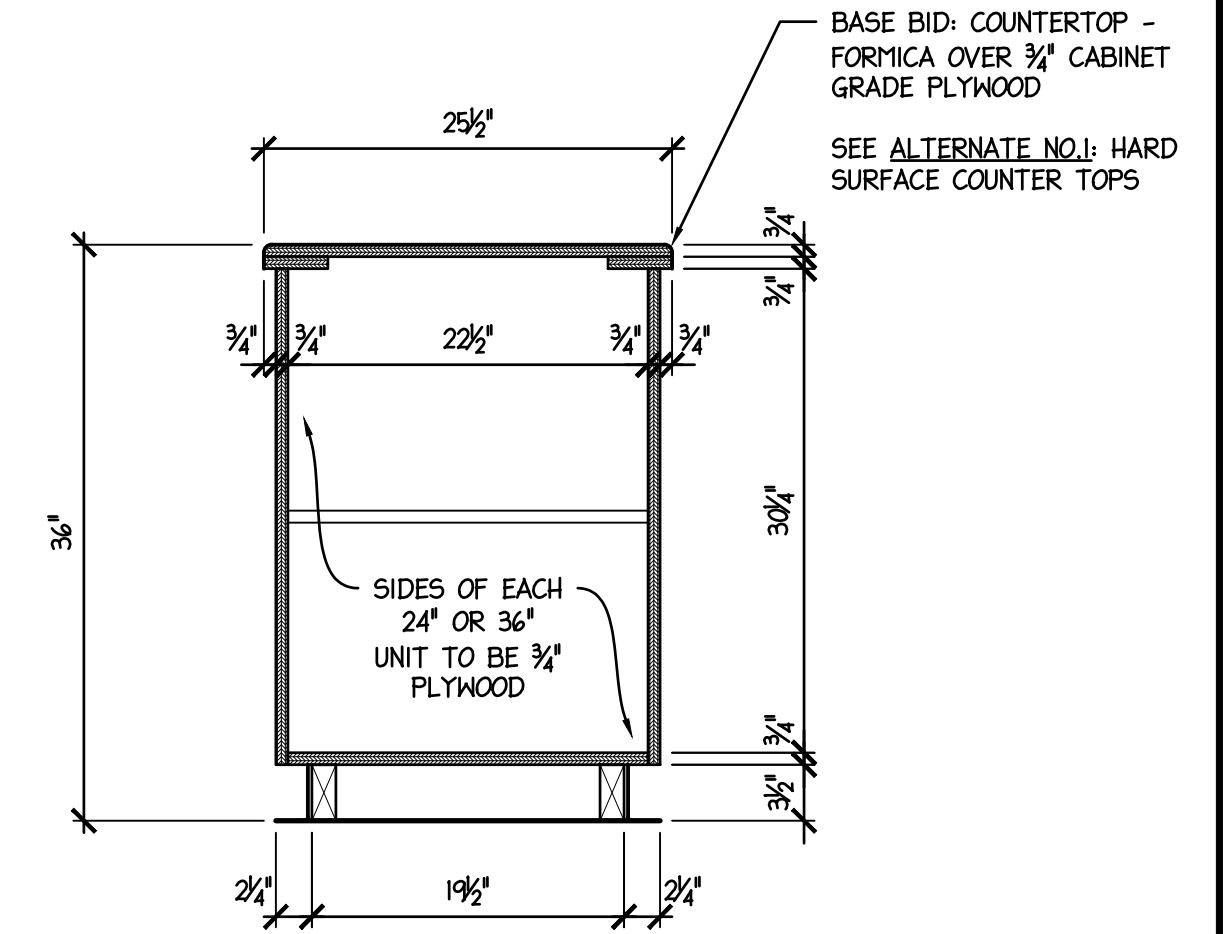
1 CUBBY STORAGE DETAIL  
A-2.1 SCALE: 1" = 1'-0" 2400\_A2.1.dwg



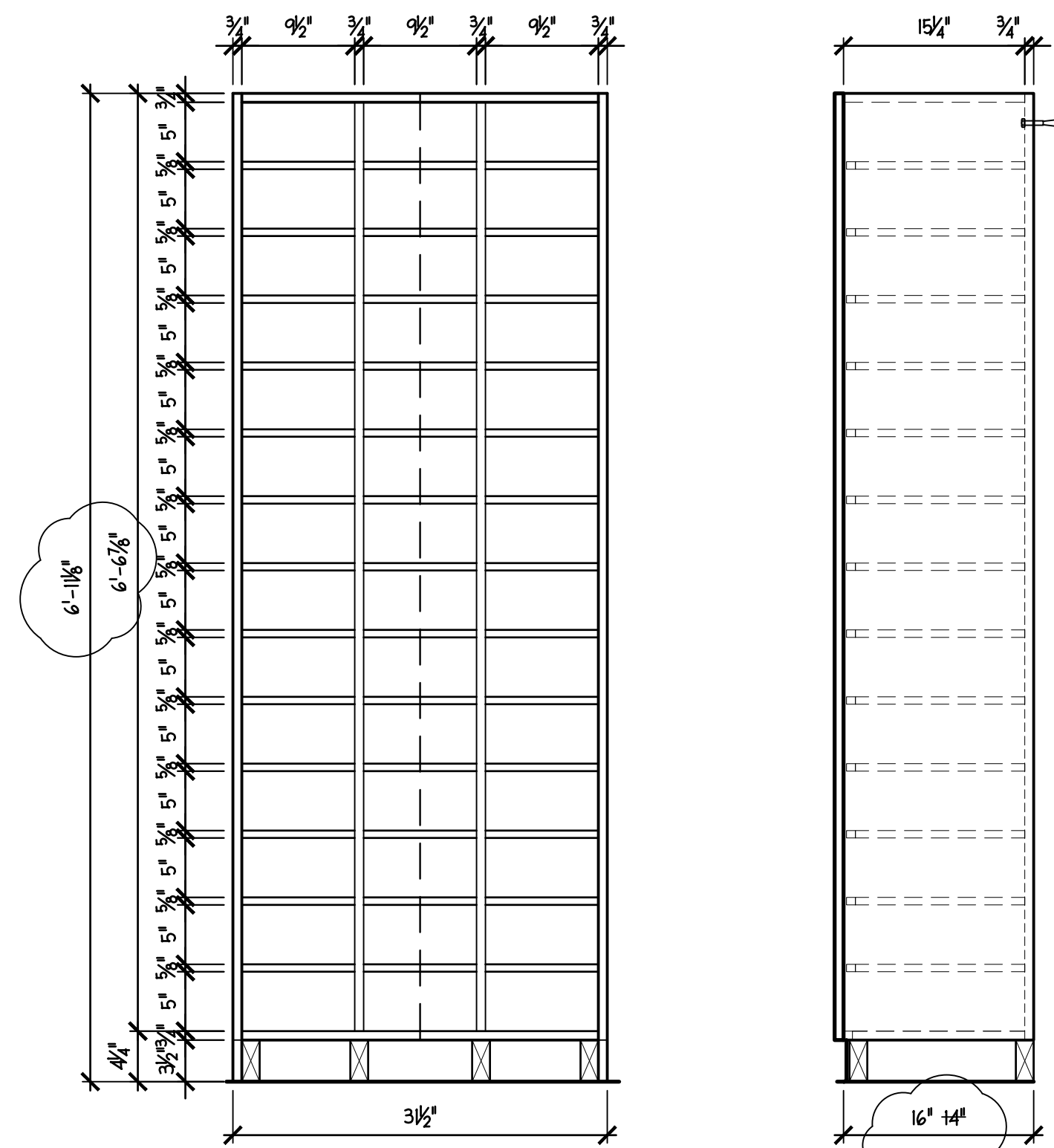
2 BASE CABINET SECTION  
A-2.1 SCALE: 1" = 1'-0" 2400\_A2.1.dwg



3 SINK BASE SECTION  
A-2.1 SCALE: 1" = 1'-0" 2400\_A2.1.dwg



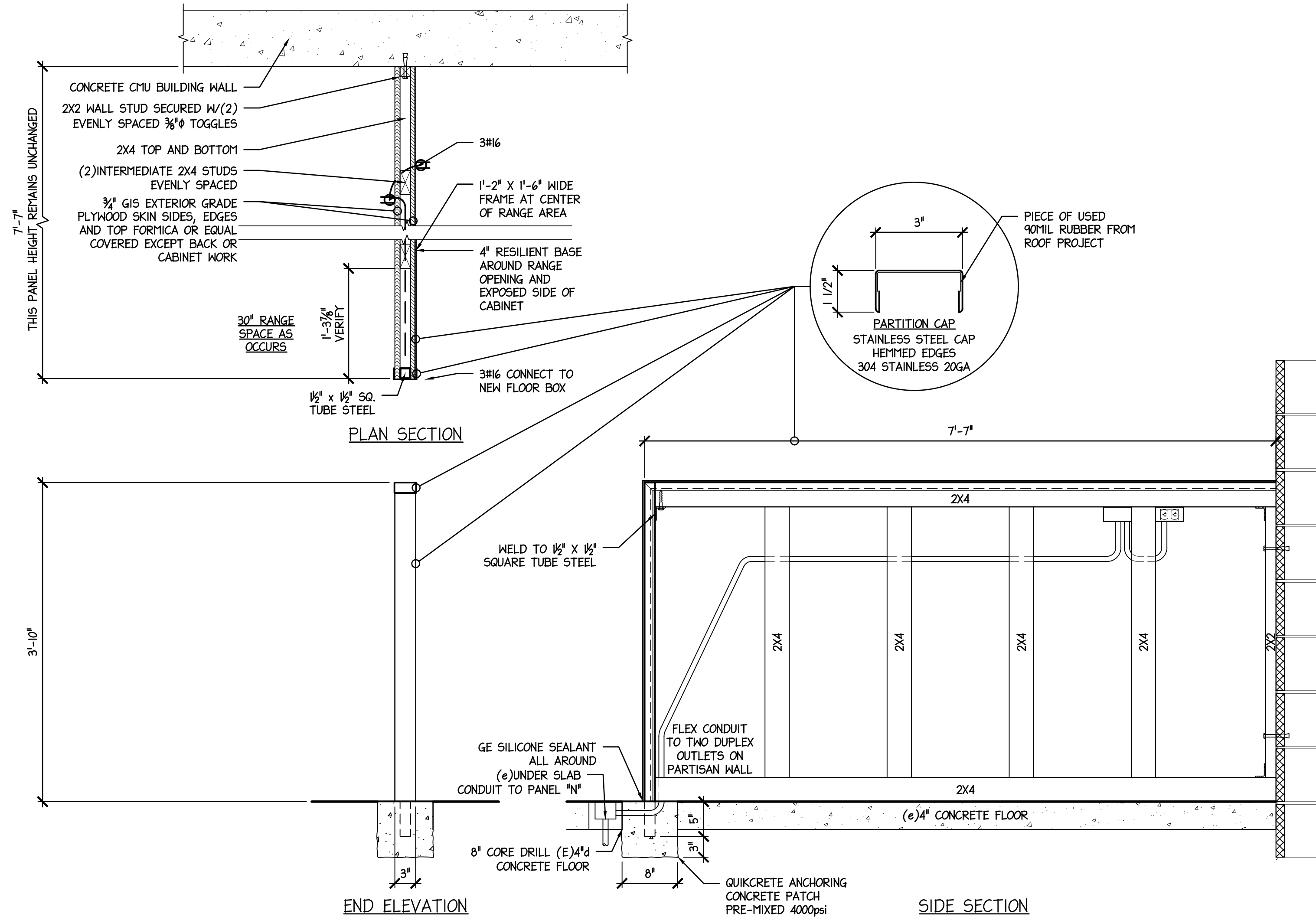
4 TEACHER DEMONSTRATION ISLAND BASE SECTION  
A-2.1 SCALE: 1" = 1'-0" 2400\_A2.1.dwg



NOTE:  
(3) STORAGE UNITS REQUIRED AT (14) ROWS / (3) COLUMNS = (126) INDIVIDUAL SPACES, LOCATIONS AS SHOWN ON PLAN SHEET A-1

ADDENDUM NO. 1  
1. ADJUST SHELVES TO PROVIDE 5" SPACING, 16" DEEP, DOUBLE DOORS, HANDLES AND SOFT CLOSING HINGES

5 STORAGE CABINET DETAIL  
A-2.1 SCALE: 1" = 1'-0" 2400\_A2.1.dwg



6 PARTITION DETAIL  
A-2.1 SCALE: 1" = 1'-0" 2400\_A2.1.dwg

| NO. | DATE     | REVISIONS     | REMARKS |
|-----|----------|---------------|---------|
| 1   | 5/7/2020 | ADDENDUM NO.1 |         |