

January 28, 2021

MIDDLETON ASSOCIATES INCORPORATED
1702 W. COLLEGE AVE., SUITE E
NORMAL, IL 61761-2793
309/452-1271 FAX 309/454-8049

ADDENDUM NUMBER 3
TO THE DRAWINGS AND SPECIFICATIONS

PROJECT: McLean County Unit District No. 5 Chiddix Junior High School HVAC Renovation

FOR: McLean Co. Unit District No. 5
1809 W. Hovey Ave.
Normal, IL 61761

A/E PROJECT NO: 23472320

ISSUE DATE: January 11, 2021

BID OPENING: Thursday, February 5, 2020, 10:00 a.m. prevailing time
Maintenance Office, 1999 Eagle Road, Normal, IL 61761

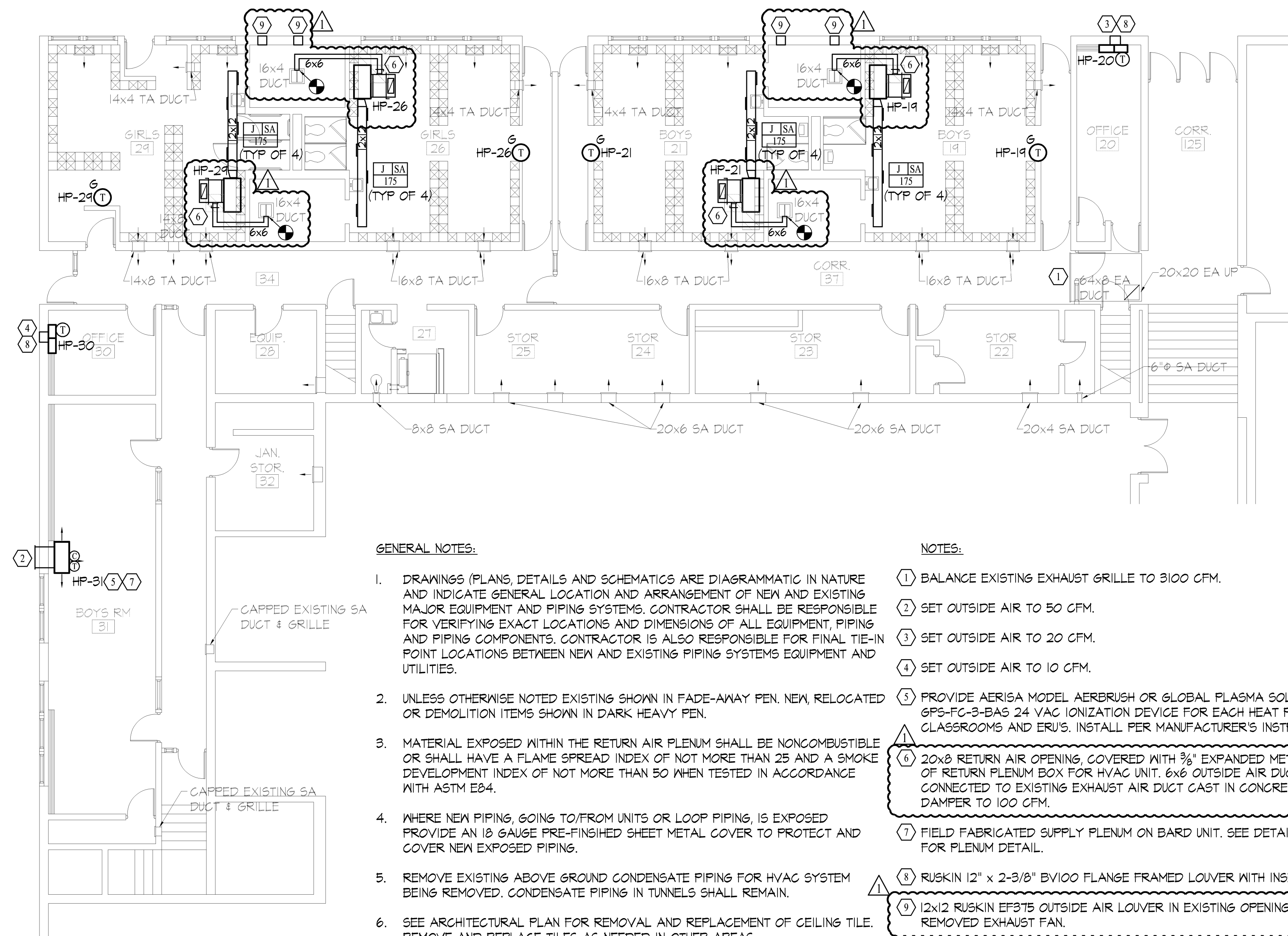
THIS ADDENDUM DOES NOT CHANGE THE BID DATE OR BID TIME.

Upon receipt of this ADDENDUM, insert same into the documents, which were issued to you. Hereafter, said ADDENDUM shall be as much a part of the said documents as though originally set forth therein. THIS ADDENDUM DOES NOT CHANGE THE BID DATE.

11. TO THE DRAWINGS: Drawing M1.7: The 52"x48" duct indicated on drawing 02 to be removed from the roof shall be removed by the general contractor.
12. TO THE DRAWINGS: Drawing M1.9: Revise the outside air ductwork to the locker room heat pumps per the attached revised drawing M1.9.
13. TO THE DRAWINGS: Drawing M3.1: The antifreeze solution shall be 20% Propylene Glycol. The calculations for the required volume of glycol in the borefield as indicated on drawing M0.2 are correct for 20% glycol solution.
14. TO THE SPECIFICATIONS: Specification Section 23 8127: Carrier is approved as a heat pump equipment supplier. Carrier model 50PEC may be bid in place of Waterfurnace NCS models, Carrier 50HQP may be bid in place of Waterfurnace NLV models, and Carrier PTH/PTV may be bid in place of Waterfurnace NBH/NBV models.

Attachment: Sheet M1.9

END ADDENDUM NO. 3

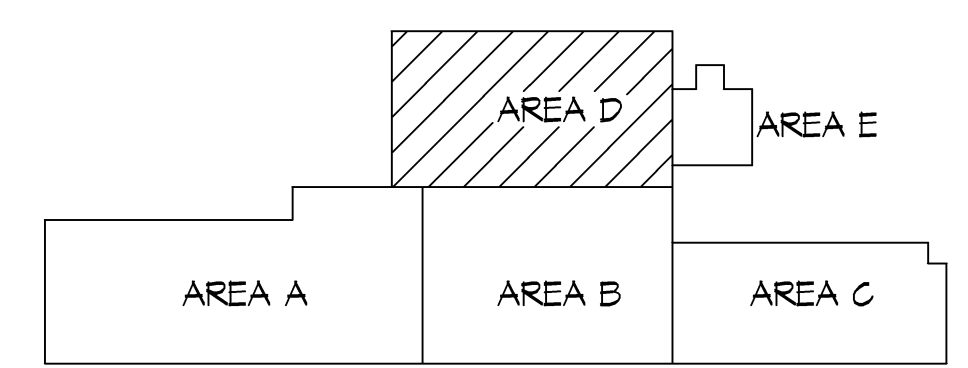


GENERAL NOTES:

1. DRAWINGS (PLANS, DETAILS AND SCHEMATICS ARE DIAGRAMMATIC IN NATURE AND INDICATE GENERAL LOCATION AND ARRANGEMENT OF NEW AND EXISTING MAJOR EQUIPMENT AND PIPING SYSTEMS. CONTRACTOR SHALL BE RESPONSIBLE FOR VERIFYING EXACT LOCATIONS AND DIMENSIONS OF ALL EQUIPMENT, PIPING AND PIPING COMPONENTS. CONTRACTOR IS ALSO RESPONSIBLE FOR FINAL TIE-IN POINT LOCATIONS BETWEEN NEW AND EXISTING PIPING SYSTEMS EQUIPMENT AND UTILITIES.
2. UNLESS OTHERWISE NOTED EXISTING SHOWN IN FADE-AWAY PEN. NEW, RELOCATED OR DEMOLITION ITEMS SHOWN IN DARK HEAVY PEN.
3. MATERIAL EXPOSED WITHIN THE RETURN AIR PLENUM SHALL BE NONCOMBUSTIBLE OR SHALL HAVE A FLAME SPREAD INDEX OF NOT MORE THAN 25 AND A SMOKE DEVELOPMENT INDEX OF NOT MORE THAN 50 WHEN TESTED IN ACCORDANCE WITH ASTM E84.
4. WHERE NEW PIPING, GOING TO/FROM UNITS OR LOOP PIPING, IS EXPOSED PROVIDE AN 18 GAUGE PRE-FINISHED SHEET METAL COVER TO PROTECT AND COVER NEW EXPOSED PIPING.
5. REMOVE EXISTING ABOVE GROUND CONDENSATE PIPING FOR HVAC SYSTEM BEING REMOVED. CONDENSATE PIPING IN TUNNELS SHALL REMAIN.
6. SEE ARCHITECTURAL PLAN FOR REMOVAL AND REPLACEMENT OF CEILING TILE. REMOVE AND REPLACE TILES AS NEEDED IN OTHER AREAS.

NOTES:

- ① BALANCE EXISTING EXHAUST GRILLE TO 3100 CFM.
- ② SET OUTSIDE AIR TO 50 CFM.
- ③ SET OUTSIDE AIR TO 20 CFM.
- ④ SET OUTSIDE AIR TO 10 CFM.
- ⑤ PROVIDE AERISA MODEL AERBRUSH OR GLOBAL PLASMA SOLUTION MODEL 6P5-FG-3-BAS 24 VAC IONIZATION DEVICE FOR EACH HEAT PUMP IN CLASSROOMS AND ERU'S. INSTALL PER MANUFACTURER'S INSTRUCTION.
- ⑥ 20x8 RETURN AIR OPENING, COVERED WITH 3/8" EXPANDED METAL, ON TOP OF RETURN PLENUM BOX FOR HVAC UNIT. 6x6 OUTSIDE AIR DUCT CONNECTED TO EXISTING EXHAUST AIR DUCT CAST IN CONCRETE. SET OA DAMPER TO 100 CFM.
- ⑦ FIELD FABRICATED SUPPLY PLENUM ON BARD UNIT. SEE DETAIL 05/M3.3 FOR PLENUM DETAIL.
- ⑧ RUSKIN 12" x 2-3/8" BV100 FLANGE FRAMED LOUVER WITH INSECT SCREEN.
- ⑨ 12x12 RUSKIN EF375 OUTSIDE AIR LOUVER IN EXISTING OPENING FROM REMOVED EXHAUST FAN.



01 HVAC RENOVATION
AREA D - GROUND FLOOR PLAN
SCALE: 1/8"=1'-0"

NO.	DATE	REVISIONS	REMARKS
1	01-23-2021	ADDENDUM #1	

THE CONTRACTOR SHALL VERIFY CONDITIONS & DIMENSIONS OF ALL EXISTING WORK SHOWN ON ANY PART OF THE DRAWINGS SHALL APPLY TO SIMILAR CONDITIONS AT OTHER LOCATIONS IN THE WORK UNLESS SET FORTH OTHERWISE.