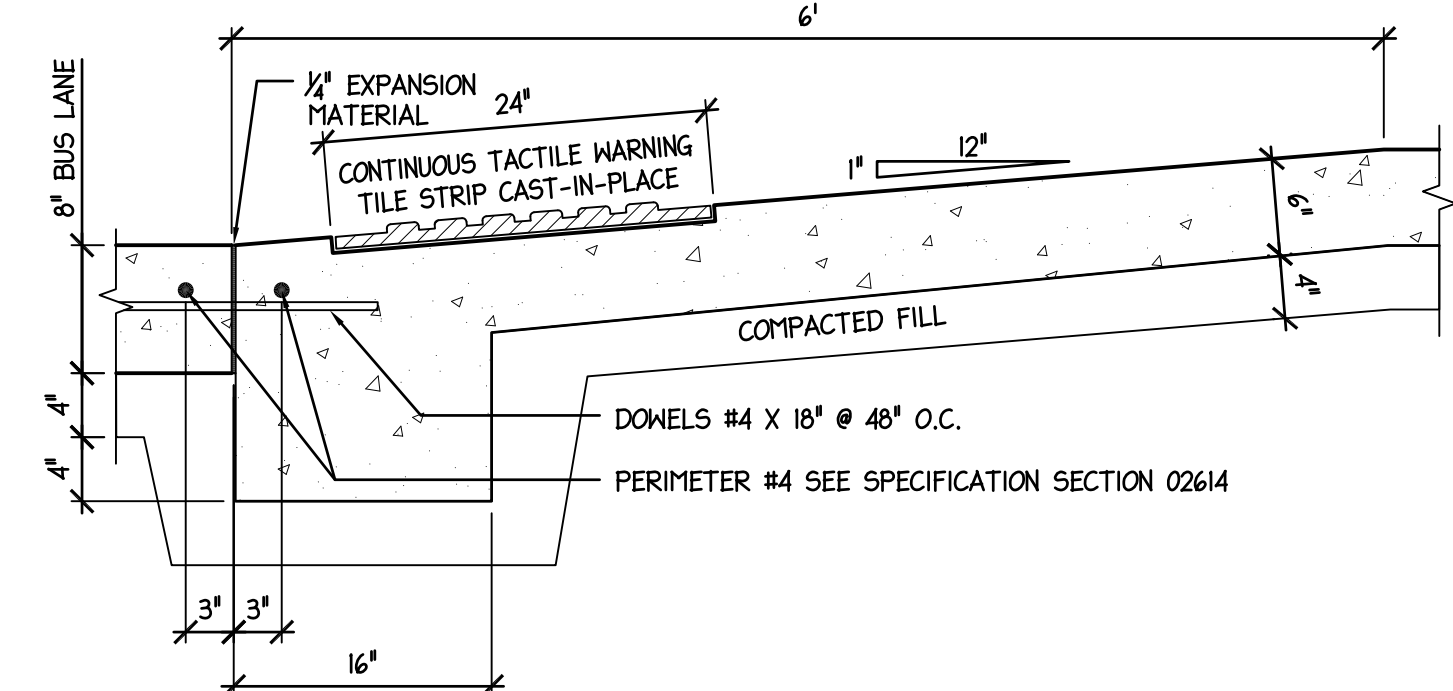
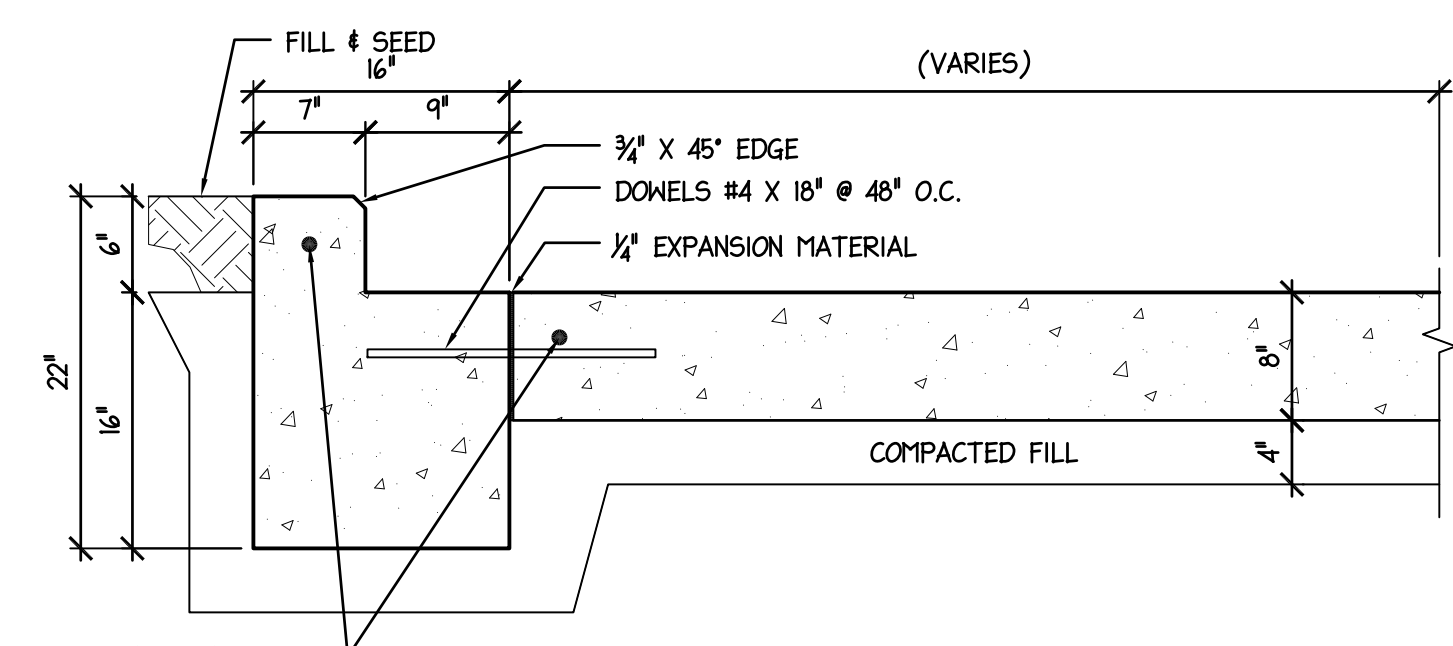


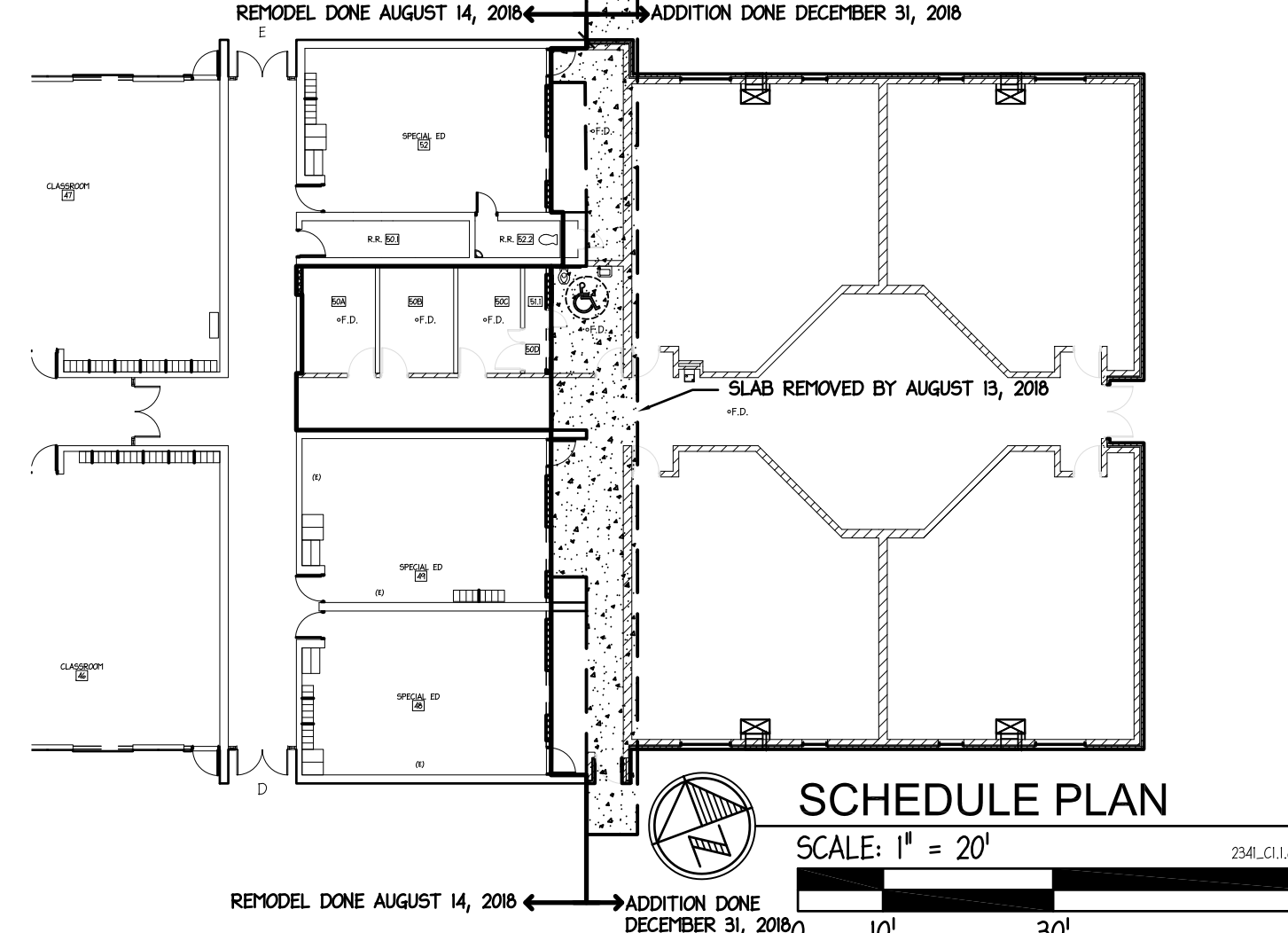
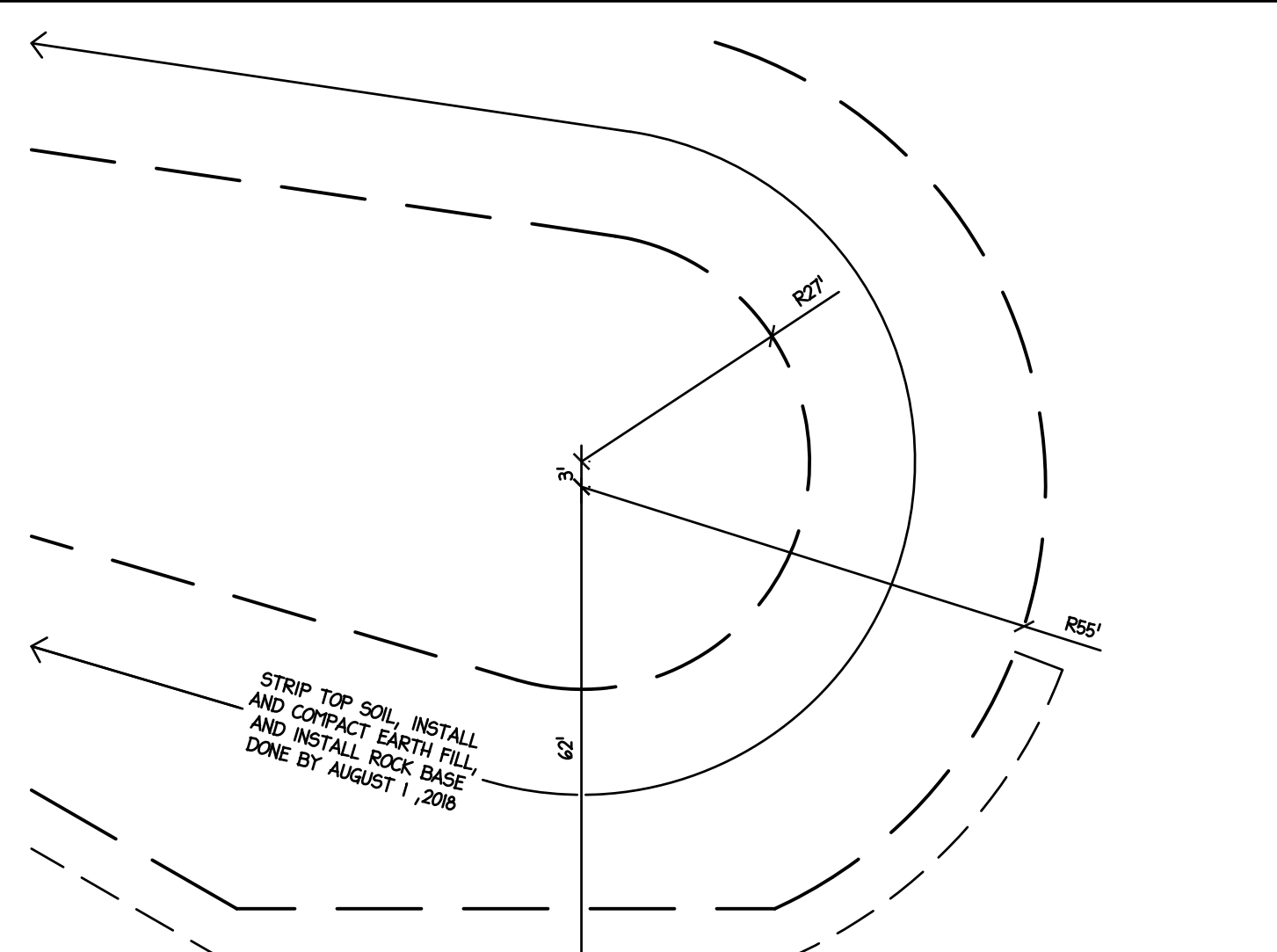
**BUS LANE TOPO PLAN**  
SCALE: 1" = 20'  
234.C1.1.dwg



**1 LAY DOWN CURB DETAIL**  
SCALE: 1" = 1'-0"  
1983 Parkside BRIS Bus Lane Rev.dwg



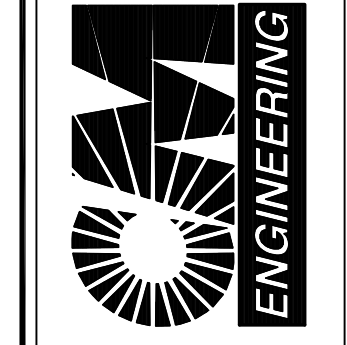
**2 CURB DETAIL**  
SCALE: 1" = 1'-0"  
1983 Parkside BRIS Bus Lane Rev.dwg



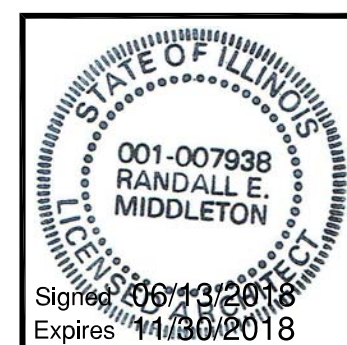
**MIDDLETON ASSOCIATES - INC ARCHITECTS**  
1702 W. College Ave. Suite E Normal, IL 61761-2793  
p: 309.452.1271 f: 309.454.8049  
middletonassociates.net

State of Illinois Professional Design Firm Number 184.000267

2801 Woodard Drive Suite 105 Columbia, Missouri 65202  
Ph: 573.874-9455 Fax: 573.874-9474  
www.cmrng.com



**COLLENE HOOSE ELEMENTARY BEST PROGRAM ADDITION**  
at 800 Grandview Drive - Normal, Illinois 61761  
for **McLEAN COUNTY UNIT DISTRICT NO.5**  
Unit District Office - 1809 West Hovey Avenue Normal, Illinois 61761-4399



RANDALL E. MIDDLETON  
001-007998

**BUS LANE SITE PLAN AND DETAILS**

NO.	DATE	REMARKS

PROJECT NO. 2341217  
ISSUE DATE JUNE 13, 2008  
SHEET **C-1.1**  
OF 24 SHEETS