

MIDDLETON ASSOCIATES INCORPORATED
1702 W. COLLEGE AVE., SUITE E
NORMAL, IL 61761-2793
309/452-1271 FAX 309/454-8049

April 1, 2019

ADDENDUM NUMBER 1
TO THE DRAWINGS AND SPECIFICATIONS

PROJECT: Edison Elementary School 2019 Addition

FOR: Macomb CUSD #185
323 W. Washington Street
Macomb, IL 61455

A/E PROJECT NO: 2275 0217

ISSUE DATE: March 4, 2019

BID OPENING: Wednesday, April 10, 2019 – 2:00 p.m. THIS ADDENDUM DOES NOT CHANGE THE BID DATE.

Upon receipt of this ADDENDUM, insert same into the documents, which were issued to you. Hereafter, said ADDENDUM shall be as much a part of the said documents as though originally set forth therein.

1. TO THE SPECIFICATIONS, Concrete, Section 03 3000 2.1.H., approved equal strong bond by Spec Chem.
2. TO THE SPECIFICATIONS, Concrete, Section 03 3000 2.1.M approved equal Stego Wrap 10 mil Class & Vapor Barrier.
3. TO THE SPECIFICATIONS, Foundation Water Proofing 07 1113 2.1. approved equal Carlisle Miraseal.
4. TO THE SPECIFICATIONS, Insulation, Section 07 2113 1.2.A. approved equal Diversifoam Certifoam 25.
5. TO THE SPECIFICATIONS, Sealants and Caulks, Section 07 9200 2.1.D.1., approved equal Sikaflex 1CSL.
6. TO THE SPECIFICATIONS, Food Service Equipment

Approved equal items always include the selected equivalent selected options as stated for the original base bid

Item 1A: Disposer approved equal Insinkerator SS-200 and control center
Insinkerator AS-101

Item 11: Refrigerator approved equal Arctic Air AR 49

Item 12 Freezer approved equal Arctic Air AF 49

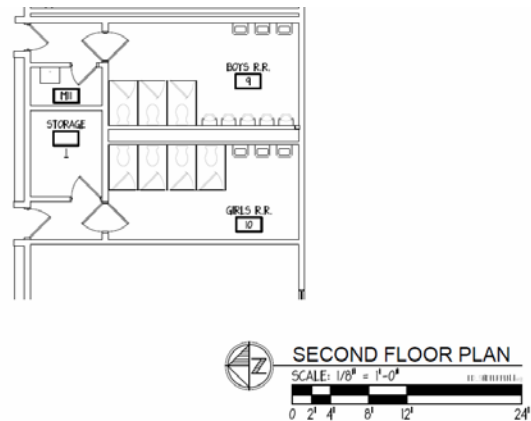
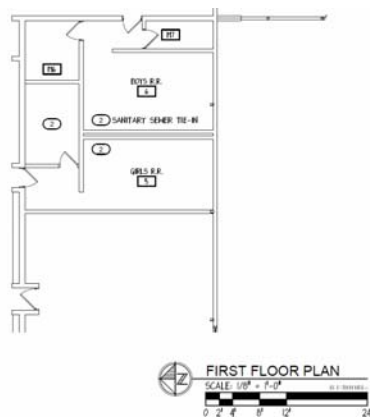
ADDENDUM NUMBER 1
TO THE DRAWINGS AND SPECIFICATIONS
PROJECT: Edison Elementary School 2019 Addition

7. TO THE SPECIFICATIONS, Section 23 31 11, page 23 31 11- 4, Paragraph 2.1, A. Manufacturers, delete all named manufacturers except Simplex Tyco-Grinnell, Peoria office. The existing fire alarm system is an existing Simplex 4010 which is required to be removed and a new FACP with voice command capacity as specified.
8. TO THE SPECIFICATIONS, Section 28 2300, Video Surveillance, as allowed under the school code for technology driven services and hardware, this work shall be single sourced to the vendor providing district wide integrated video system;

Dynamic Controls Inc., 727 Sabrina Drive, East Peoria, Phone 309 692 8810, Fax 309 692 7899, contact information, dave.homerin@dciusa.com

The division of the work to install, pull wiring, provide penetrations and or raceways, rough in and device installation is negotiable between the selected vendor and the electrician. Cameras, head end equipment, set up adjustments and aiming, programming, all work and equipment associated with completing the system and integrating it to the District wide system is to be by Dynamic Controls. The responsibility to confirm the division of various task responsibilities remains with contractor.

9. TO THE DRAWINGS, Sheet A.1.1, Existing Restrooms First Floor 4 and 5, Second Floor 9 and 10. This will require the partitions to be loosened and raised or removed from floor, coordinate with the Owner to remove ACM from under pedestals, removal of toilets, installation of Quarry tile throughout the rest rooms and vestibules leading in. At floor transitions provide bullnose starter. Quarry tile base to be employed throughout. Reinstall toilets and partitions providing adjustment for floor thickness. Remove doors and provide necessary undercut adjustment and reinstall. Touch up surrounding finishes as required if disturbed by work under this contract. Note: both floors have comparable toilet partition layouts even though they are only shown on the second floor plan in our drawings.



10. TO THE DRAWINGS, Sheet P-1.3: Add to elevator pit a new sump pump pit and single sump pump with attached float control. See attached sump pump schedule. Pipe sump discharge 2" pipe up and out to sewage ejector pit. Run 2" pipe out thru foundation wall to sewage ejector pit.

ADDENDUM NUMBER 1
TO THE DRAWINGS AND SPECIFICATIONS
PROJECT: Edison Elementary School 2019 Addition

11. TO THE DRAWINGS, Sheet P-5.1: Add attached Sump Pump Equipment Schedule to this sheet.

12. TO THE DRAWINGS, Sheet E-2.2:

- a. Add 120 volt 20 amp branch circuit from panel LP1 circuit #39 and run (2) #12, (1) #12 G. in 3/4" C. to new elevator cab lights.
- b. Provide a second 20 amp 120 volt branch circuit to new light fixture and light switch and GFI receptacle to be installed in the elevator pit. The receptacle is for the new sump pump and general maintenance.
- c. Provide a 3 phase feeder from panel LP1 to new elevator drive unit. Run (3) #8, (1) #10G. In 1" C. provide a 3 pole 35 amp breaker in panel LP1.
- d. Provide a light fixture at the top of the elevator shaft with a light switch to control this new light fixture. Connect the light fixture at the top of the elevator shaft to the branch circuit called out for the pit light fixture.
- e. The two new light fixtures for the elevator shaft shall be equal to a Kenall #H1212FLPPLG20L35K.
- f. Provide a CAT6 to the local server room for voice over IP phone system in this facility.

13. TO THE DRAWINGS, Sheet E-4.2: Delete the Time clock schedule from this sheet.

14. TO THE DRAWINGS, Sheet E-5.1: One Line Power Distribution Detail, keyed note #1, delete reference to providing a new 3 pole 400 amp breaker, and add "There is an existing spare 400 amp 3 pole breaker that will be used to connect the new kitchen panel LP3 too".

END ADDENDUM 1